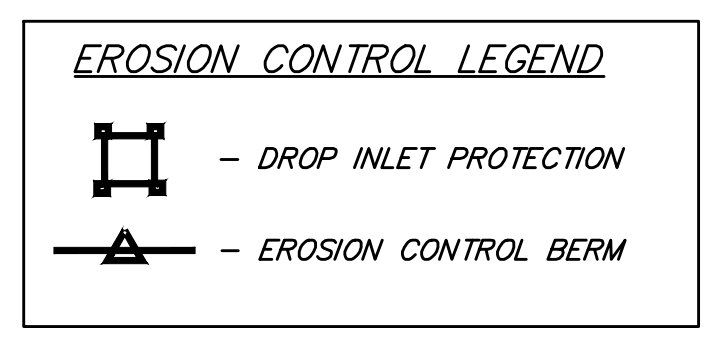
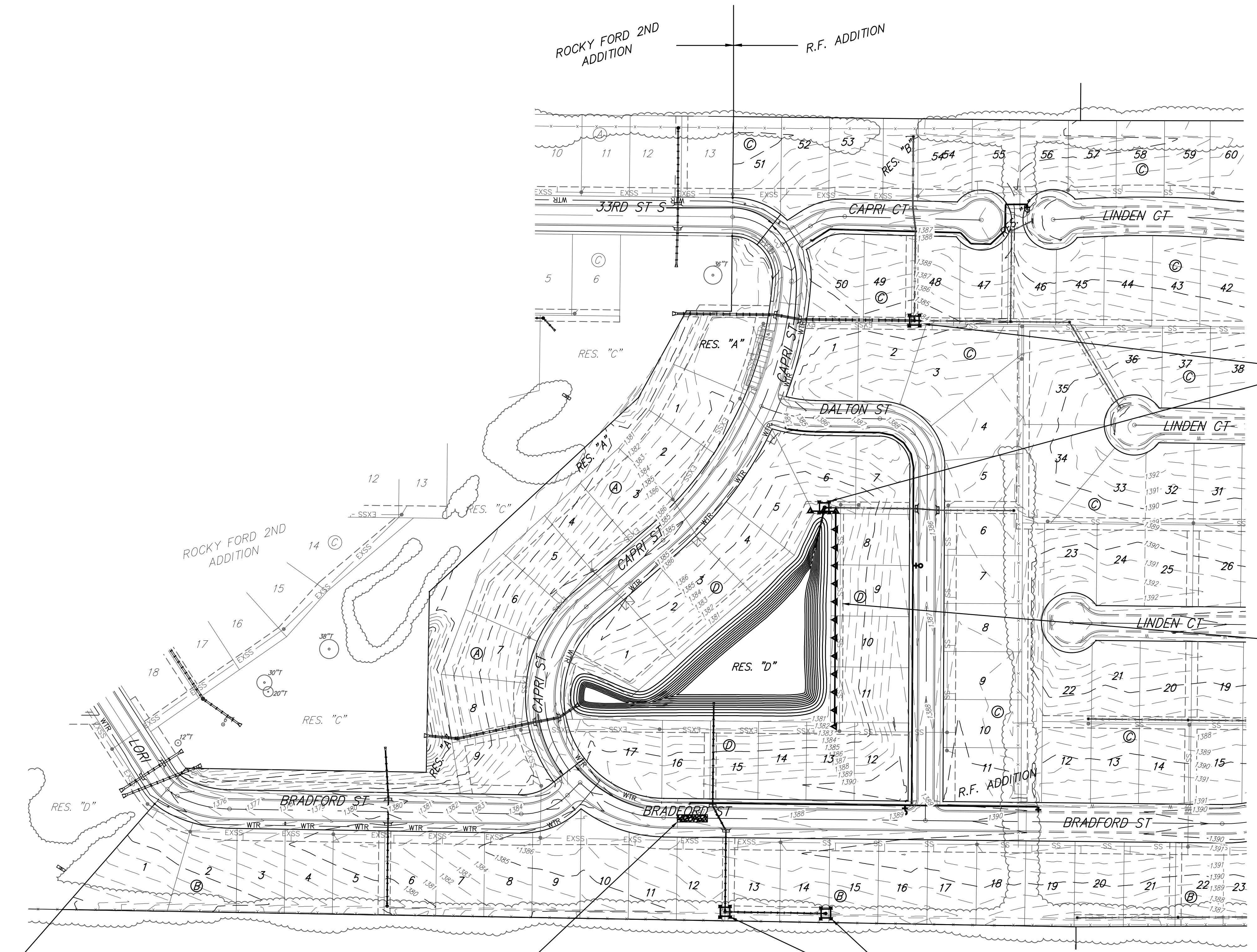
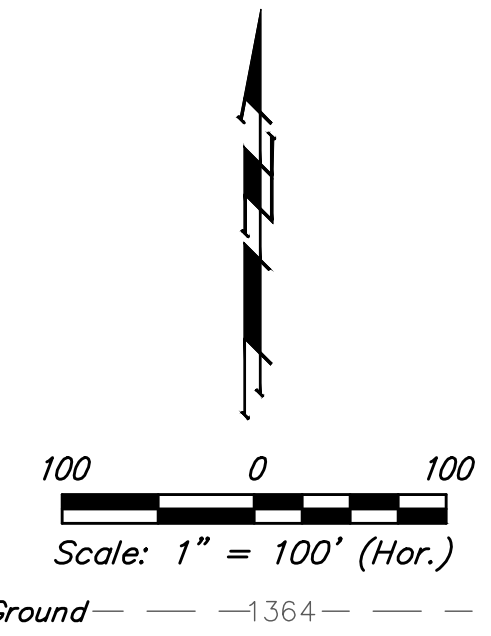


**BENCHMARKS:**

#1: "□" CUT CHISELED ON CURB,  
15.2' S. OF SW COR., LOT 6,  
BLOCK A, ROCKY FORD 2ND  
ADDITION.  
ELEV. = 1385.10 NAVD88

#2: "□" CUT CHISELED ON CURB,  
8.6' N. & 11.7' W. OF SW COR.,  
LOT 14, BLOCK C, ROCKY FORD  
2ND ADDITION.  
ELEV. = 1380.11 NAVD88



Maintain Drop Inlet Protection

Maintain 400.0 L.F. Erosion Control Berm

Maintain 50'x12' Gravel Construction Entrance

Maintain Drop Inlet Protection

EROSION CONTROL MEASURE	INSTALL	MAINTAIN
CONSTRUCTION ENTRANCE (EA)	0	1
SILT FENCE (LF)	0	0
DITCH CHECKS (EA)	0	0
CURB INLET PROTECTION (EA)	0	0
DROP INLET PROTECTION (EA)	0	4
EROSION CONTROL MAT (SY)	0	0
MULCH WATTLE SED. BARRIER (LF)	0	0
EROSION CONTROL BERM (LF)	0	400

\* ALL EXISTING BMPs INCLUDING CONSTRUCTION ENTRANCE, SEDIMENT BARRIERS, SILT FENCE, CUT-OFF TRENCH, AND EROSION CONTROL MAT SHALL BE MAINTAINED AND REPAIRED IF NECESSARY.

Contractor shall make sure all erosion control is in place before project is accepted. This plan represents the minimum standard. Any additional erosion control measures shall be installed by the Contractor as needed.

ROCKY FORD 2ND ADDITION  
R.F. ADDITION

**Baughman**

R.F. Addition - Phase II  
**EROSION CONTROL**  
Water Distribution System

---

Baughman Company, P.A. 315 Ellis St. Wichita, KS 67211 P 316-262-7271 F 316-262-0149  
ENGINEERING | SURVEYING | PLANNING | LANDSCAPE ARCHITECTURE

PROJECT NUMBER <b>448-2019-005514</b>	DESIGN AEG	DRAWN HJW
REVISIONS:	APPROVED	DATE 08/03/20
	SCALE Noted	SHEET

8 OF 16

