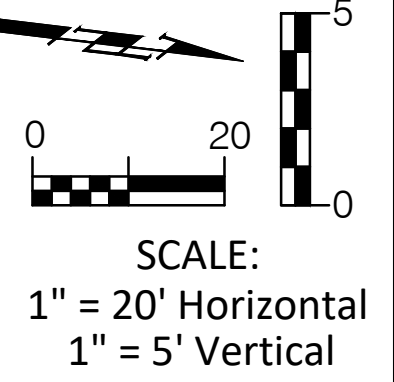
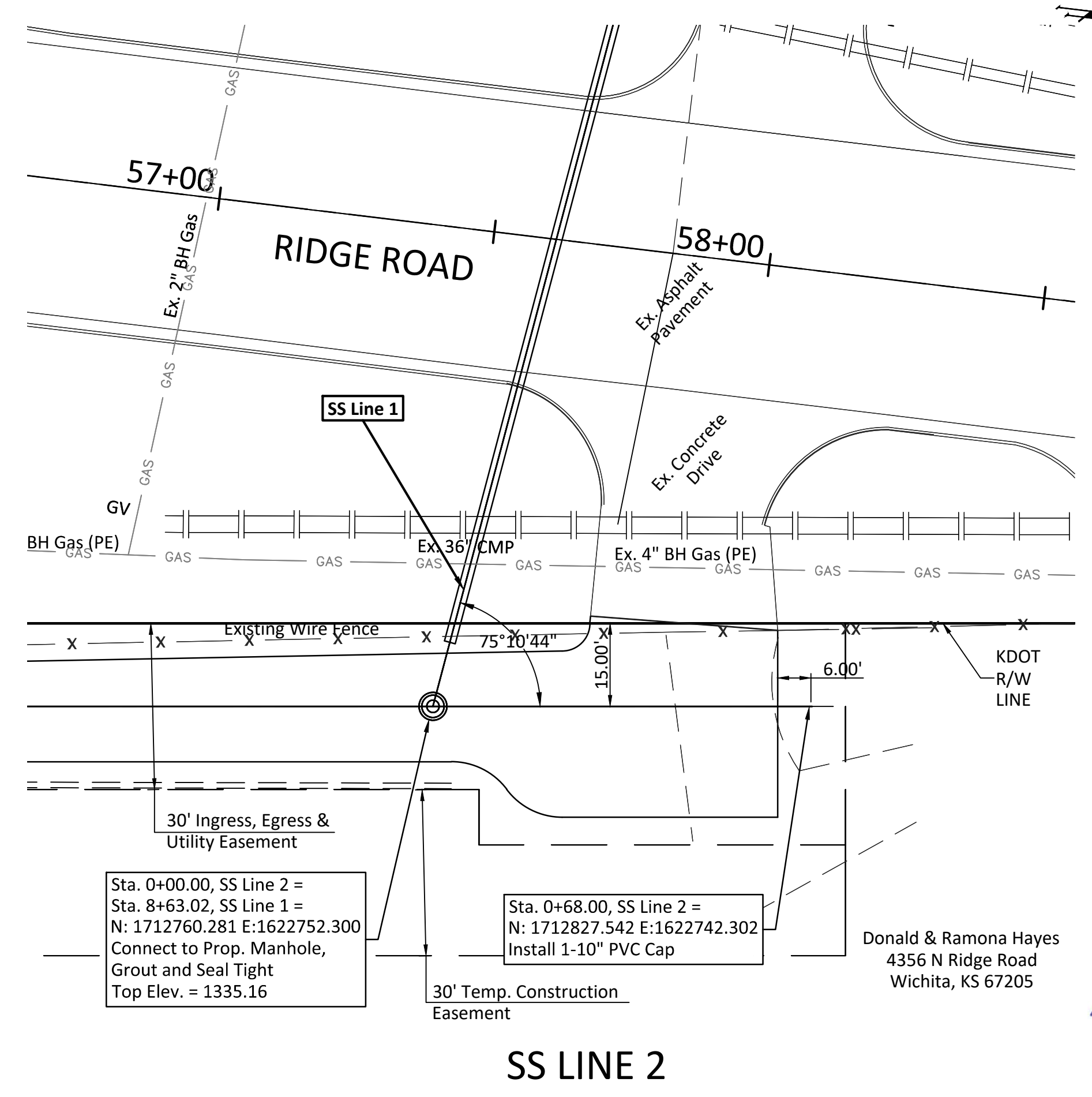
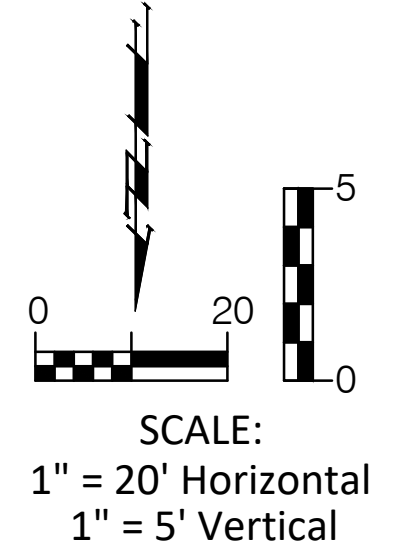
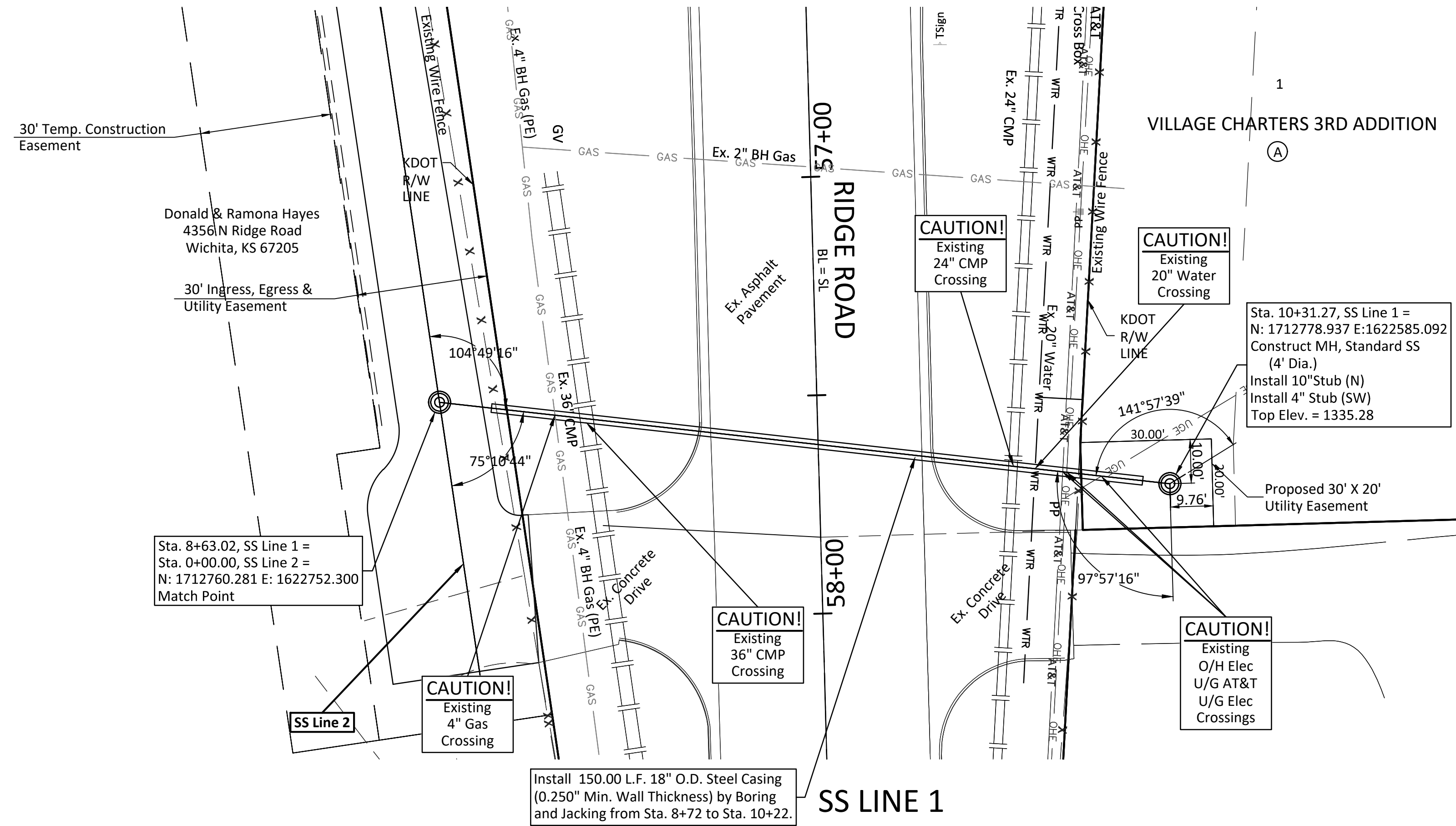


BENCHMARK:
 BM #1 - Chiseled "X" on Top of the Curb on the West Side of the Median on Ridge Road North of the Entrance/Exit Ramps on K-96.
 Elev. = 1336.16 (NAVD 88)



1345	1345	1345	1345
1340	1340	1340	1340
1335	1335	1335	1335
1330	1330	1330	1330
1325	1325	1325	1325
1320	1320	1320	1320
1315	1315	1315	1315
1310	1310	1310	1310
8+63.02	9+00	10+00	10+31.27

1345	1345	1345	1345
1340	1340	1340	1340
1335	1335	1335	1335
1330	1330	1330	1330
1325	1325	1325	1325
1320	1320	1320	1320
1315	1315	1315	1315
1310	1310	1310	1310
0+00.00	0+68.00	0+68.00	0+68.00

BAUGHMAN COMPANY
 SANITARY SEWER MAIN
SANITARY SEWER LINE 1 & SANITARY SEWER LINE 2
 VILLAGE CHARTERS 3RD ADDITION
 PROJECT NUMBER: 468-005421
 INTERNAL NUMBER: 18-11-E123
 DESIGN: TPV
 DRAWN: TPV
 DATE: June 2020
 SHEET 5 OF 28