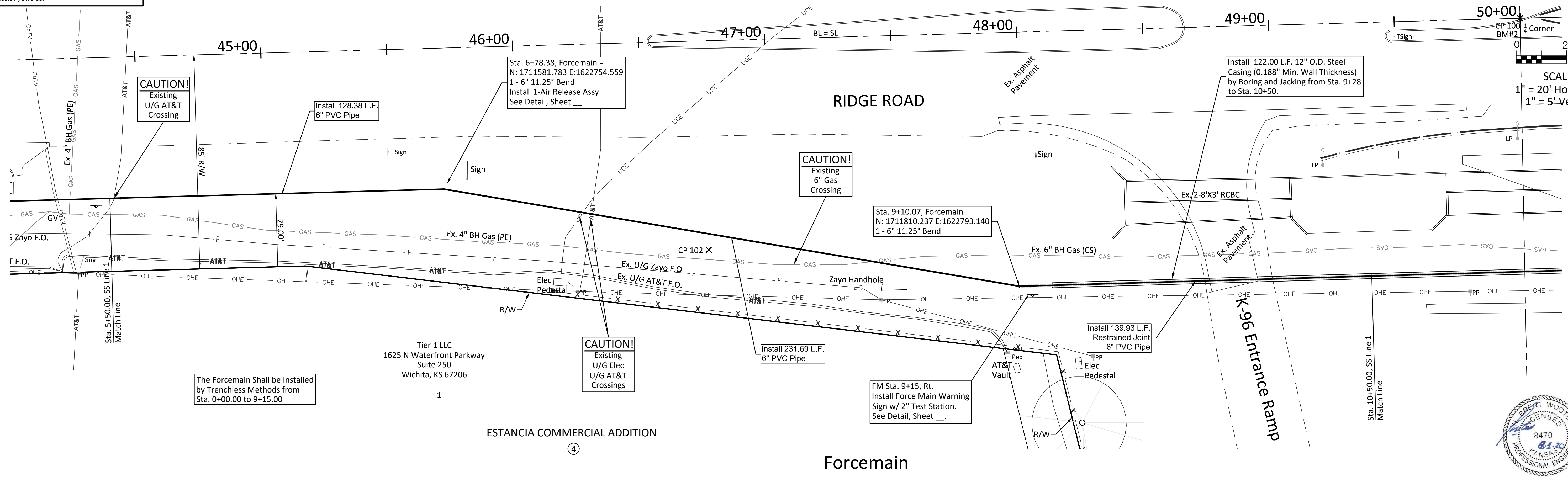


BENCHMARK:
 BM #2 - Chiseled "s" in the Flowline of the Curb on the West Side of the Median on Ridge Road South of the K-96 Bridge.
 Elev. = 1335.04 (NAVD 88)

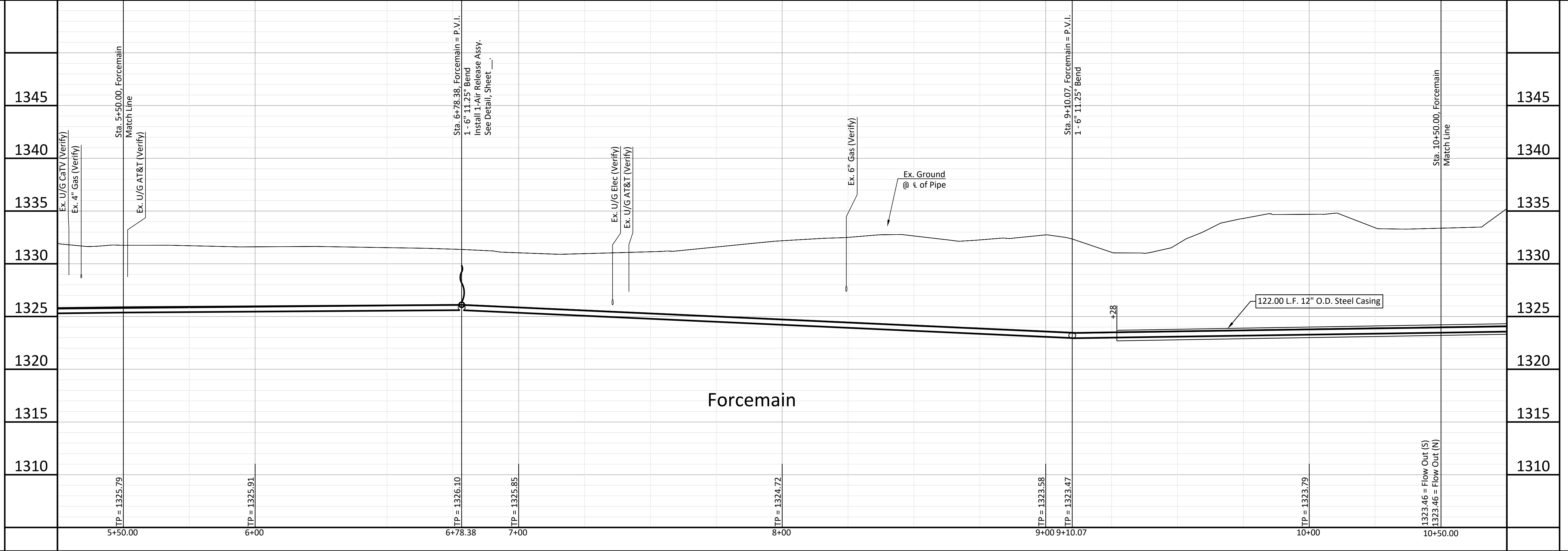


The Force Main Shall be Installed by Trenchless Methods from Sta. 0+00.00 to 9+15.00

Tier 1 LLC
 1625 N Waterfront Parkway
 Suite 250
 Wichita, KS 67206

ESTANCIA COMMERCIAL ADDITION

Force Main



BAUGHMAN COMPANY
 315 Ellis St. Wichita, KS 67211 316-262-7271
 baughmanco.com

BAUGHMAN

SANITARY SEWER MAIN
FORCE MAIN PLAN/PROFILE
 Sta. 5+55.00 - Sta. 10+50.00
 VILLAGE CHARTERS 3RD ADDITION

PROJECT NUMBER: 468-005421
 INTERNAL NUMBER: 18-11-E123
 DESIGN: TPV
 DRAWN: TPV
 DATE: June 2020
 SHEET
 OF 7
 28

TP = 1325.79
 TP = 1325.91
 TP = 1326.10
 TP = 1325.85
 TP = 1324.72
 TP = 1323.58
 TP = 1323.47
 TP = 1323.79

1323.46 = Flow Out (S)
 1323.46 = Flow Out (N)