

GENERAL NOTES:

- The Contractor shall comply with all applicable safety regulations. All construction shall be completed following current City Standard Specifications and Special Provisions.
- Contractor will be required to provide notice to utility companies a minimum of seventy-two (72) hours prior to any excavation, as follows:
Kansas One-Call 687-2470
The Contractor must notify the following in case of an emergency:
AT&T 1-800-246-8464
Black Hills Energy 1-800-694-8989
City of Wichita Water & Sewer 1-316-219-8921
City of Wichita Stormwater 1-316-268-4090
City of Wichita Traffic 1-316-268-4034
Cox Communications 1-888-249-3630
Kansas Gas Service 1-888-482-4950
Energy Energy 1-800-544-4857
- Utility service lines, poles, etc. are to be adjusted as necessary by others prior to construction unless the plans specifically call for their adjustment by the Contractor or unless the plans specifically identify a utility to be adjusted by its owner during construction. Existing utilities and their location, as shown on the plans, represent the best information obtainable for design. The Contractor will be required to work around existing utilities within the right-of-way which do not conflict with proposed construction.
- Rubble from the removal of miscellaneous structures and excess excavation which is to be wasted shall be disposed of on sites to be provided by the Contractor. These sites shall be approved by the Engineer as to suitability, appearance and site location. Locations, in the opinion of the Engineer, that will leave an unsightly appearance will not be approved. All disposal sites must be approved by the Kansas Department of Health and Environment. Material either stockpiled or disposed of in a flood plain will require a Kansas State Board of Agriculture permit. Any material dumped in waters of the United States or wetlands is subject to U.S. Corps. of Engineers permitting regulations. Any material buried or stockpiled beyond approved construction limits will require additional archaeological investigations unless buried in a previously approved borrow location.
- All trees and shrubs in public right-of-way, easements and lots within the benefit district of this project shall be removed by the Contractor and disposed of by either burning or removing from the site. All costs associated with tree removal shall be included in bid item "Site Clearing."
- The Contractor shall give all property owners and/or tenants of developed property abutting the construction of this project a minimum of ten (10) days notice prior to start of construction.
- The Contractor shall be responsible for preserving property irons. The Contractor will be required to re-establish any property irons which are damaged or destroyed by his construction operations. Such irons shall be re-established by a licensed land surveyor in accordance with state laws
- All elevations shown are NAVD 88.
- The Contractor shall protect from damage and support existing utilities through construction as approved by the utility owner and the Engineer at the contractor's expense.
- Contractor shall limit the extent of trench openings overnight and weekends to less than 50 feet.
- A saw cut of at least one-half the depth of existing surface courses or one-fourth the depth of the existing total pavement thickness shall be provided at locations where proposed construction abuts the existing surface course or pavement for which partial removal of that surface or pavement is required. Sawed joint to facilitate removal within three (3) feet of existing joints will not be permitted and for such instances the limits of removal shall extend to the existing joint. Such saw cuts will not be paid for directly and this cost shall be considered as subsidiary to the removal of the surface or pavement.
- Except when required for safety, traffic control shall not block any lanes or sidewalks when work is not being performed.
- All rubble and debris within public right-of-way, easements, and lots within the benefit district of this project shall be removed from the site by the Contractor. Cost of removal shall be included in bid item "Site Clearing."
- Excess excavation shall be spread evenly on-site on lots outside of easements within the benefit district of this project.

- Limits of earthwork shall match existing ground elevations at the right-of-way line unless otherwise noted on the plans with a new finished grade elevation. When a new finished grade elevation is shown, the earthwork shall extend one foot beyond the right-of-way line and then slope up or down using permissible slopes to match the existing ground surface.
- All existing and proposed erosion control measures including silt fencing, erosion control mat, straw bales, inlet barriers, and const. entrance shall be maintained throughout construction by the contractor and until project is accepted by the City of Wichita. The on-site engineer shall complete weekly reports on the status of erosion control measures. The contractor shall be required to comply with maintenance and/or replacement of erosion control measures as determined by the on-site engineer until project is accepted by City of Wichita. Maintenance and/or replacement of erosion control measures to be paid by L.S. bid item "Maintain Existing BMPs".
- All disturbed areas are to be seeded as follows:
Seed -- Rye grass; 5 lbs./1000 Sq. Ft.
All costs associated with seeding including mobilization, preparation of ground, seeding, fertilizing, mulching, etc. shall be included in the L.S. bid item "Seeding".
- The developer for this project is Meadow Lake Beach Corp., Richard A. Niedens, President

Benchmarks

BM #1 - City of Wichita Benchmark Disc, SE Corner of Clifton and 55th Street South, Southwest corner of RCB, on top of hubguard at the West end.
Elev. = 1263.91 NAVD88

BM #2 - "□" Cut on top of curb, north side of Shoffner, adjacent to SE corner of Lot 14 Block B, Meadowlake Beach Addition, Sedgwick County, Kansas.
Elev. = 1264.80 NAVD88

STREET PAVING FOR SHOFFNER WITH INCIDENTAL SWS IMPROVEMENTS

to serve

MEADOWLAKE BEACH ADD. - PH. 3A

Shoffner, from the east line of Lot 13, Block B, west to the west line of Lot 63, Block A
Maywood from the north line of Shoffner, north to the north line of Lot 59, Block A
Shoffner Circle (Lots 60 through 62, Block A) from the west line of Lot 63, Block A,
west to and including the cul-de-sac

CITY OF WICHITA, KANSAS

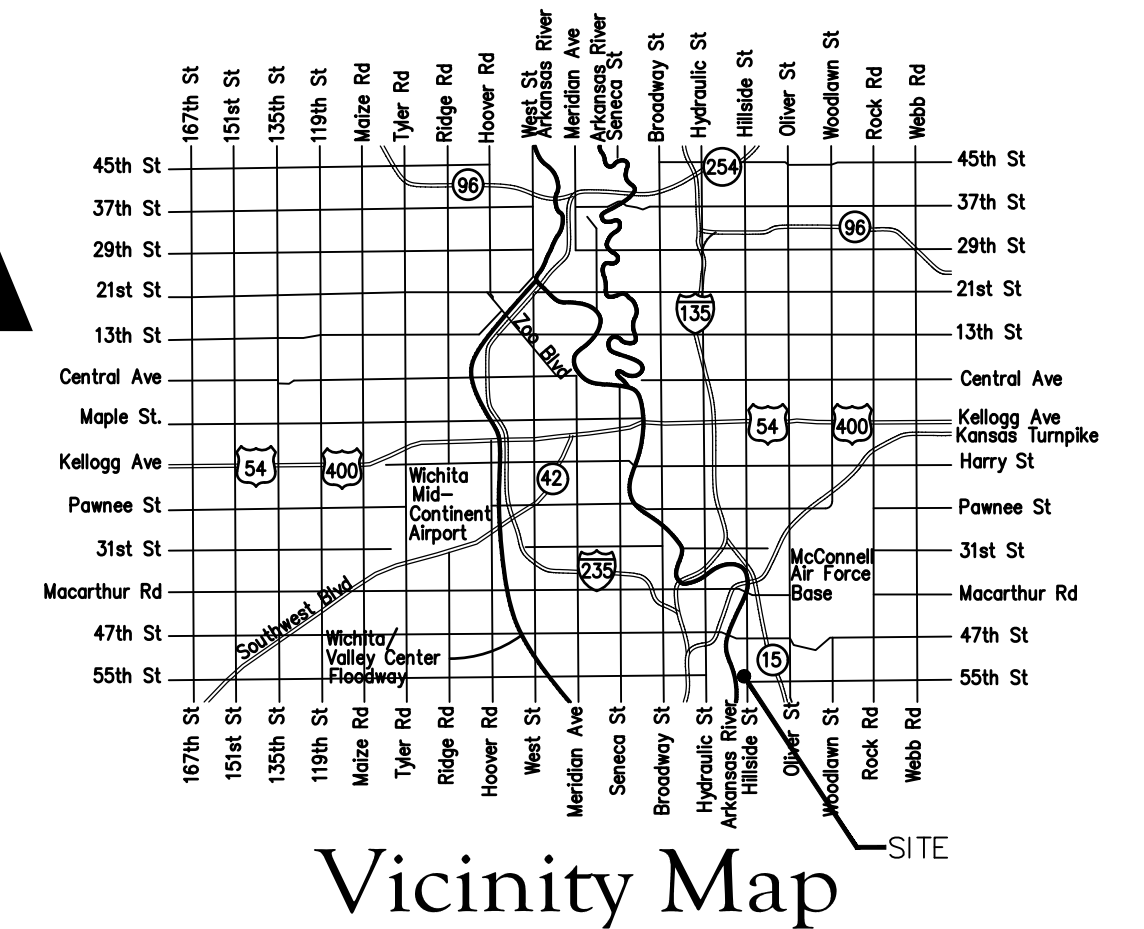
Gary Janzen, P.E. City Engineer

Project Number

472-2020-84542

O.C.A. Number

766474



Vicinity Map

Sheet Index

Title Sheet	
Shoffner/Shoffner Cir.	2-4
Shoffner Ct.	5
Maywood	6
SWS Line 1	7-8
SWS Line 2	9
SWS Line 2A	10
SWS Line 3	11
Erosion Control/Esmt. Grading Plan	12
Asphalt Paving Detail	13
Curb & Gutter Detail	14
Sign Detail	15
Valley Gutter Detail	16
Wheelchair Ramp Detail	17
Type 1A Inlet L=5' and 10' Detail	18
Backyard Inlet Detail	19
Precast Concrete Manhole Detail	20
MH-Inlet Frame & Cover Detail	21
Miscellaneous Detail	22
Headwall 15,18-24 Detail	23-24
Erosion Control BMP Details	25-29
Street X-Sections	30-35
Coordinate Sheet	36
Copy of Plat	37

Stormwater Certification:

New Development or Redevelopment (Circle One)

Stormwater Permit # SW2020-0022

NOI Permit # S-AR94-0495 KSR 104111

These construction plans were prepared in accordance with the current Stormwater management Regulations as set forth in the City of Wichita's Stormwater Management Ordinance 16.32 and the policies/guidelines presented in the Wichita/Sedgwick County Stormwater Manual.

Site Area (Acres) = 99.4 Ac.

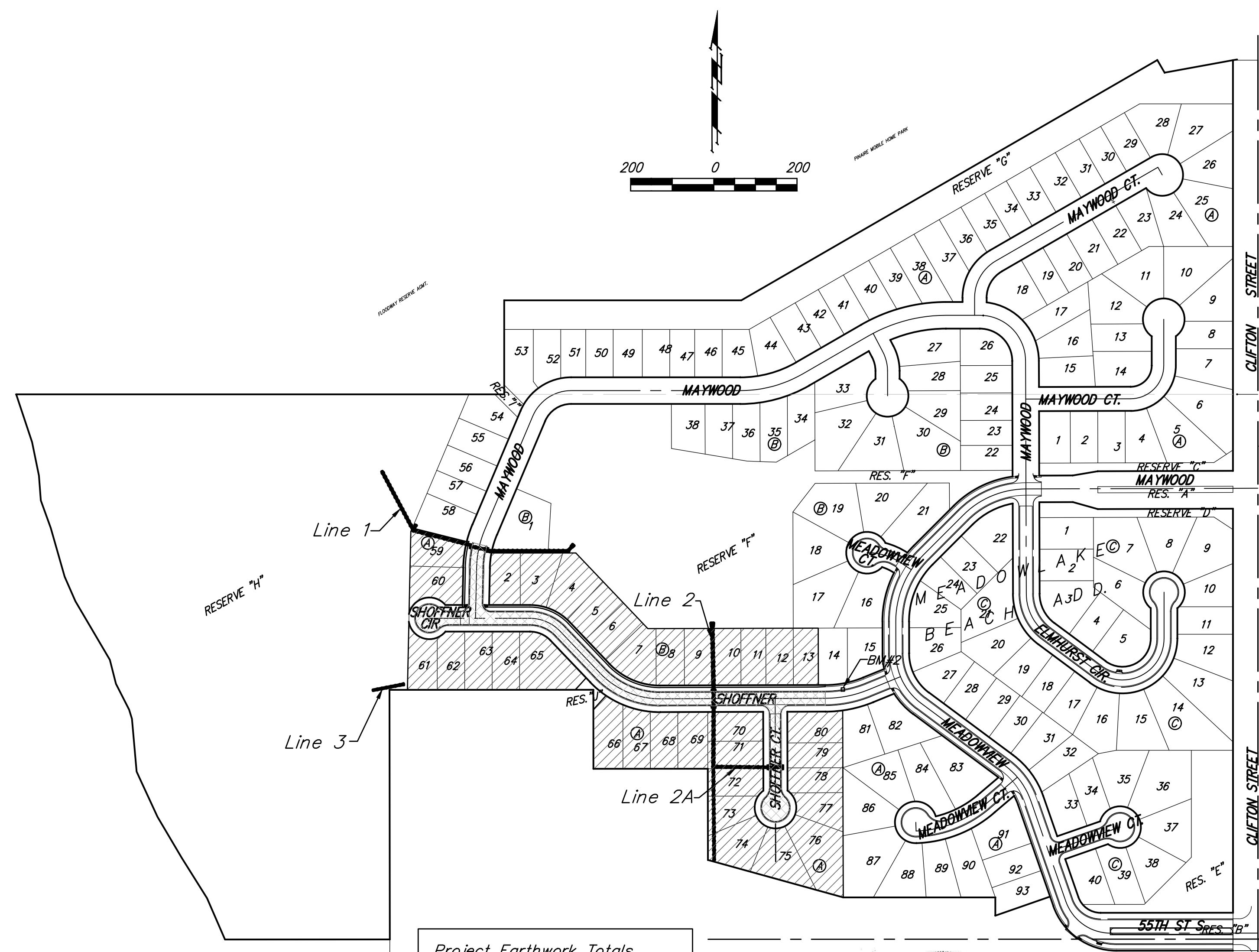
Disturbed Area (Acres) = 99.4 Ac.

Water Quality Treatment: Wet Ponds

Downstream Channel Protection: Wet Ponds

Detention: Wet Ponds

The BMP used for this development is Wet Ponds



Project Earthwork Totals
Excavation = 1,910 C.Y.
Loose Fill = 589 C.Y.
Compacted Fill = 134 C.Y.

Total Project Length
1,462 L.F. = 0.28 Miles



August 2020



Baughman Company, P.A. 315 Ellis St. Wichita, KS 67211 P 316-262-7271 F 316-262-0143
ENGINEERING | SURVEYING | PLANNING | LANDSCAPE ARCHITECTURE

E:\Projects\Meadowlake Beach\Phase 3A\STRws\STRws.dwg