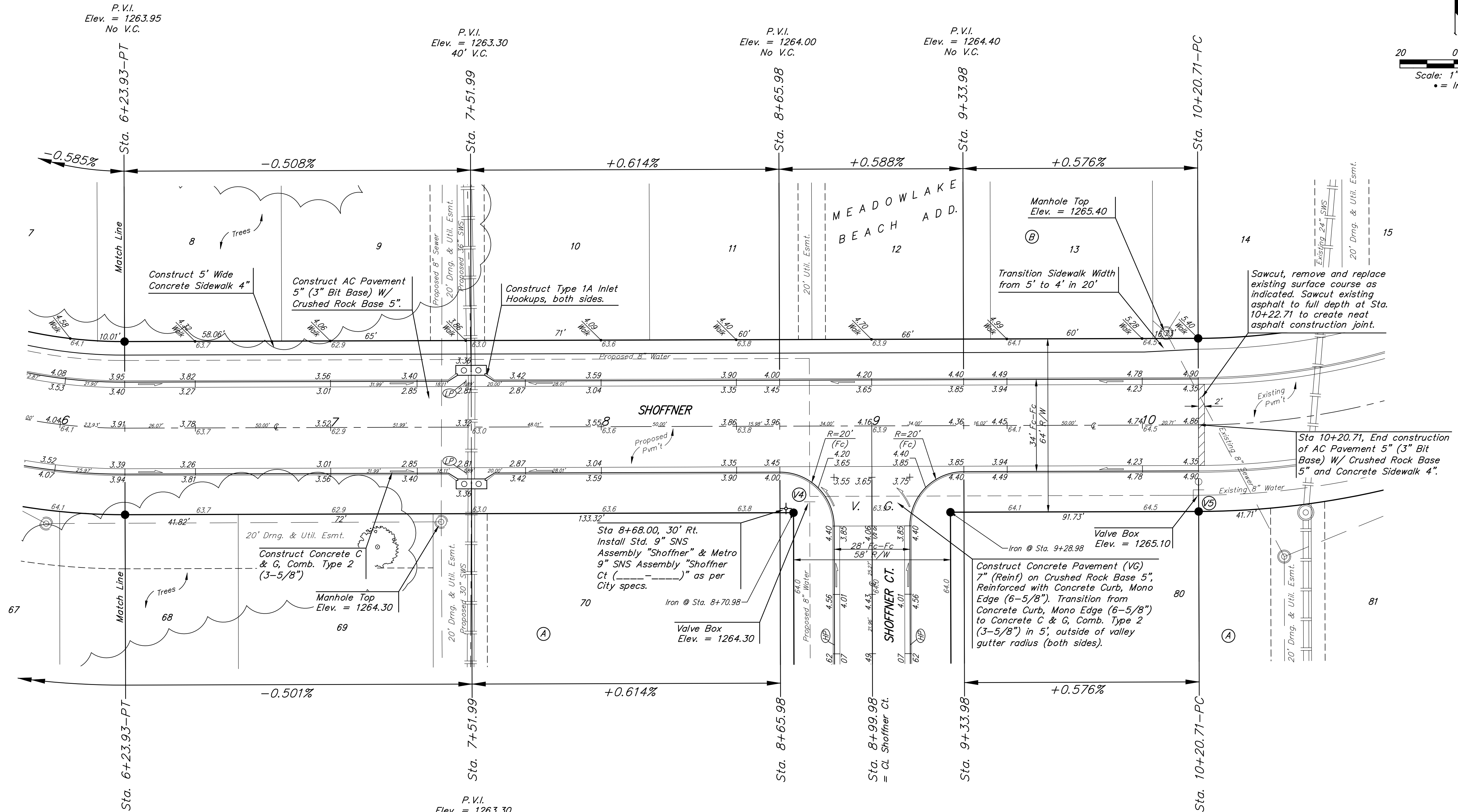


**BENCHMARKS:**  
 BM #1 - City of Wichita Benchmark  
 Disc, SE Corner of Clifton and 55th  
 Street South, Southwest corner of  
 RCBC, on top of hubguard at the  
 West end.  
 Elev. = 1263.91 NAVD88

BM #2 - "□" Cut on top of curb,  
 north side of Shoffner, adjacent to  
 SE corner of Lot 14 Block B,  
 Meadowlake Beach Addition,  
 Sedgwick County, Kansas.  
 Elev. = 1264.80 NAVD88

Baseline = CL Shoffner Cir. & Shoffner



WATER VALVE LOCATION TABLE

VALVE NUMBER	STREET	BASELINE STATION	OFFSET DISTANCE	OFFSET DIRECTION
V4	Shoffner	8+76.98	26'	Rt.
V5	Shoffner	10+20.71	26'	Rt.

Paving contractor will be responsible to operate all water valves on the project, in the presence of the inspector, to ensure accessibility to the valves, and that all valves (except blowoffs) are left in the "ON" position when the project is completed.

All trees in public right-of-way, easements and lots in project benefit district shall be removed by contractor. To be paid for as lump sum bid item "Site Clearing"

All rubble and debris in public right-of-way, easements and lots in project benefit district shall be removed by contractor. To be paid for as lump sum bid item "Site Clearing"

NOTE: ROLL TYPE CURB & CUTTER (TYPE 2) TO BE CONSTRUCTED ON THE PAVEMENT SHOWN ON THIS SHEET. TOP OF CURB ELEVATIONS ARE GIVEN FOR FULL HEIGHT CURB (TYPE 4).

MEADOWLAKE BEACH ADD. - PH. 3A  
**SHOFFNER**  
 STREET IMPROVEMENTS