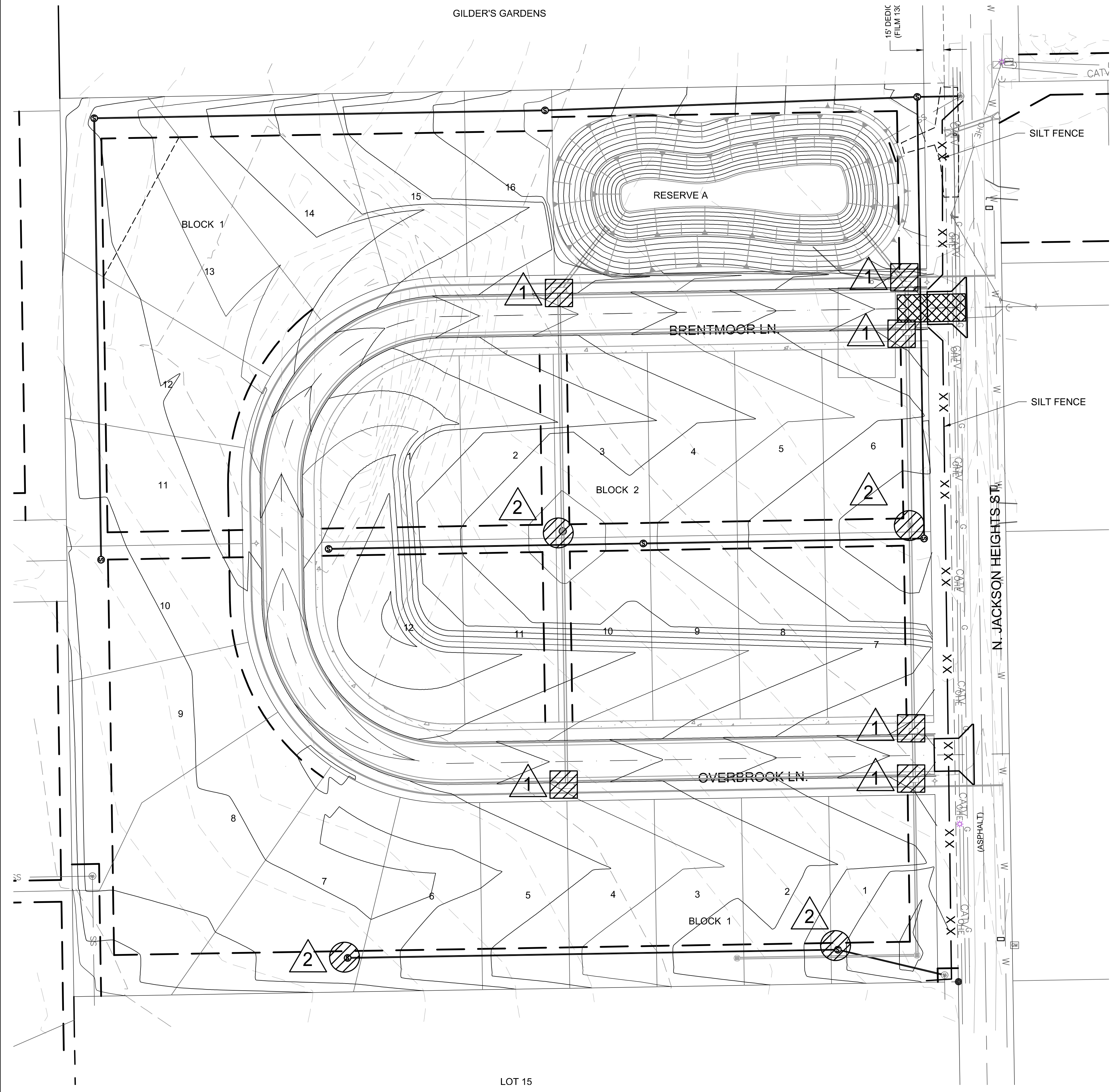


File: L:\2020\20T41000 - Jackson Heights Phase 1\Drawings\C3D\20T41000 EROSION CONTROL.dwg Last Save: 7/29/2020 8:02 AM Last saved by: KWLee
 Last plotted by: Lee, Ken W. Plot Style: Plot Scale: 1:2,584.9 Plot Date: 8/17/2020 4:54 PM Plotter used: None



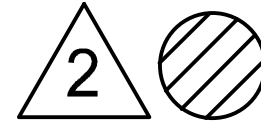
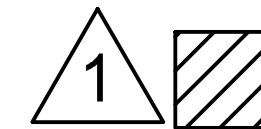


NOTE:

Since the water and sanitary sewer projects are tied for bidding and share the same benefit district, the cost for "Site Clearing", "Site Restoration", "Traffic Control" and "Maintain Existing BMPs" shall be paid for by the bid items established for that work in the Sanitary Sewer Project.

Information on this page is for information Only.

LEGEND

-  MAINTAIN CONSTRUCTION ENTRANCE (1 EACH)
-  MAINTAIN SILT FENCE (600 LIN. FT.)
-  MAINTAIN Drop Inlet Protection (4 Ea.)
-  MAINTAIN Curb Inlet Protection (6 Ea.)



© 2020 GARVER, LLC
 THIS DOCUMENT, ALONG WITH THE IDEAS AND DESIGNS CONVEYED HEREIN, SHALL BE CONSIDERED INSTRUMENTS OF PROFESSIONAL SERVICE AND ARE PROPERTY OF GARVER, LLC. ANY USE, REPRODUCTION, OR DISTRIBUTION OF THIS DOCUMENT, ALONG WITH THE IDEAS AND DESIGN CONTAINED HEREIN, IS PROHIBITED UNLESS AUTHORIZED IN WRITING BY GARVER, LLC OR EXPLICITLY ALLOWED IN THE GOVERNING PROFESSIONAL SERVICES AGREEMENT FOR THIS WORK.

8535 E. 21st Street N.
 Suite 130
 Wichita, KS 67206
 (316) 264-8008



REV.	DATE	DESCRIPTION	BY



CITY OF WICHITA
 WICHITA, KANSAS
 JACKSON HEIGHTS
 ADDITION
 WATER

EROSION CONTROL PLAN

JOB NO.: 20T41000
 DATE: AUGUST 2020
 DESIGNED BY: KWL
 DRAWN BY: DRS

BAR IS ONE INCH ON ORIGINAL DRAWING
 0 1"
 IF NOT ONE INCH ON THIS SHEET, ADJUST SCALES ACCORDINGLY.

DRAWING NUMBER

SHEET NUMBER **8** OF **14**