

BENCHMARKS:

#1: "□" CUT CHISELED ON CURB,
15.2' S. OF SW COR., LOT 6,
BLOCK A, ROCKY FORD 2ND
ADDITION.
ELEV. = 1385.10 NAVD88

#2: "□" CUT CHISELED ON CURB,
8.6' N. & 11.7' W. OF SW COR.,
LOT 14, BLOCK C, ROCKY FORD
2ND ADDITION.
ELEV. = 1380.11 NAVD88

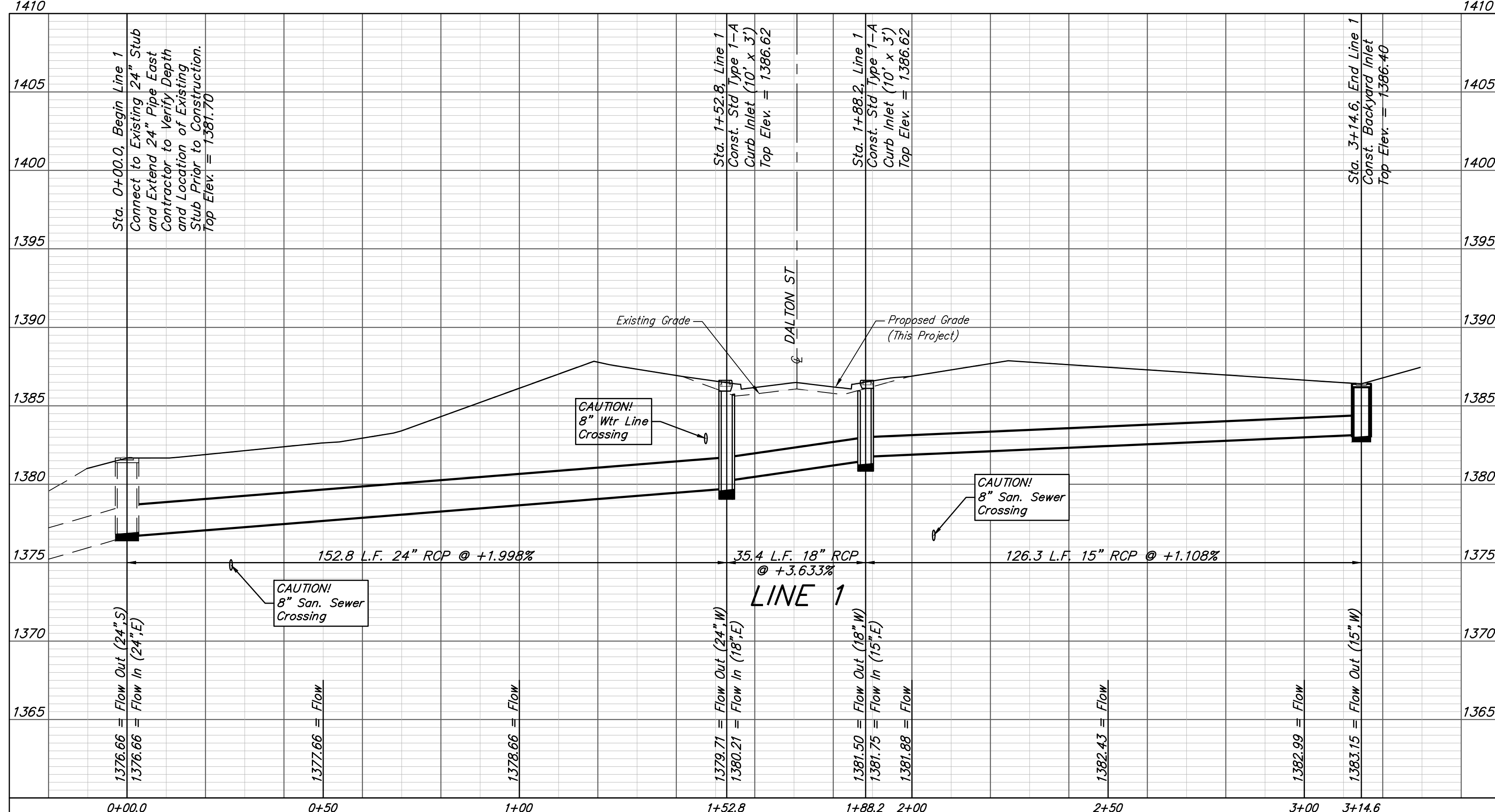
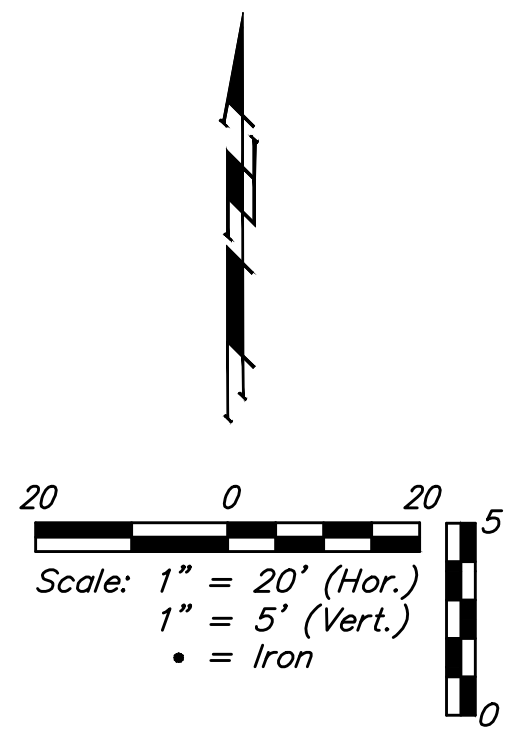
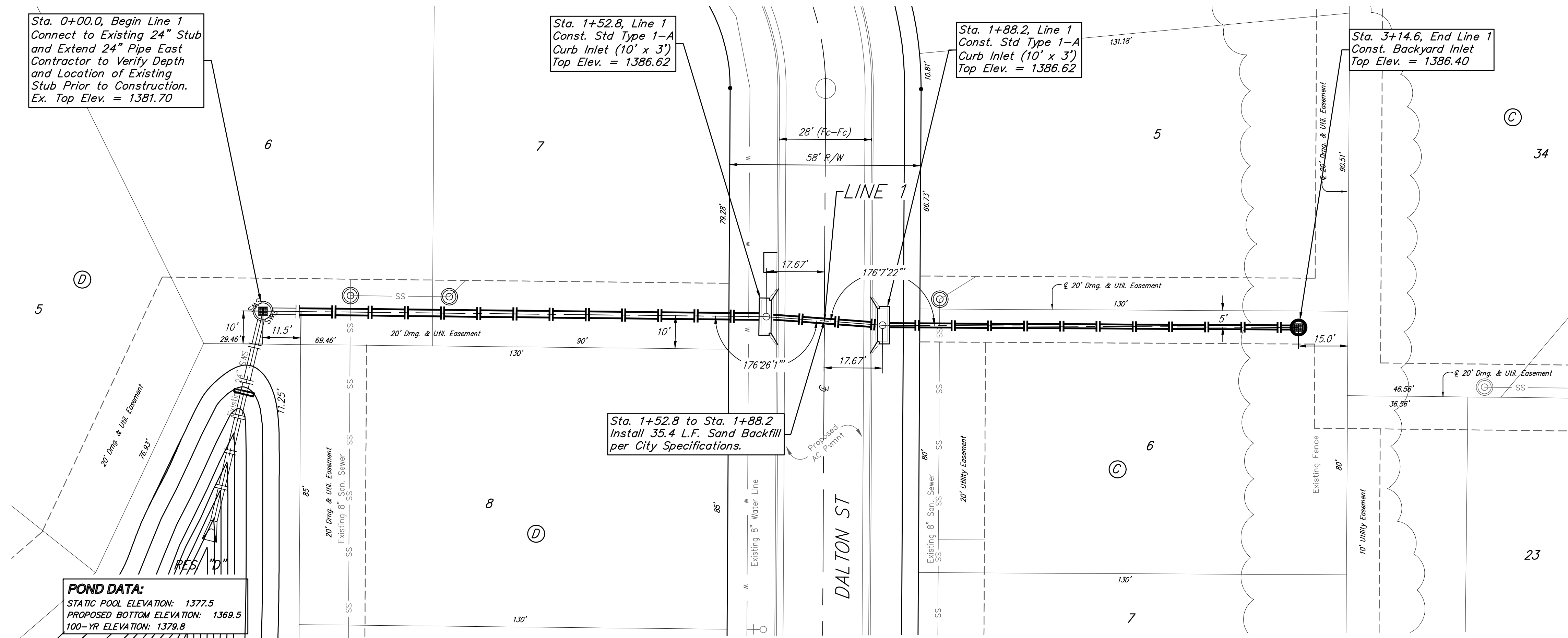
Sta. 0+00.0, Begin Line 1
Connect to Existing 24" Stub
and Extend 24" Pipe East
Contractor to Verify Depth
and Location of Existing
Stub Prior to Construction.
Ex. Top Elev. = 1381.70

Sta. 1+52.8, Line 1
Const. Std Type 1-A
Curb Inlet (10' x 3')
Top Elev. = 1386.62

Sta. 1+88.2, Line 1
Const. Std Type 1-A
Curb Inlet (10' x 3')
Top Elev. = 1386.62

Sta. 3+14.6, End Line 1
Const. Backyard Inlet
Top Elev. = 1386.40

POND DATA:
STATIC POOL ELEVATION: 1377.5
PROPOSED BOTTOM ELEVATION: 1369.5
100-YR ELEVATION: 1379.8



Existing trees which are in direct conflict with proposed new construction shall be removed by the Contractor ONLY with approval of the Developer or Engineer. Trees not in direct conflict with proposed new construction shall remain and be protected from damage. Cost shall be included in bid item "Site Clearing". Prior to construction, an on-site meeting with the developer will be held to discuss the final location of the stormwater structure at Sta. 3+14.6.

Baughman R.F. Addition - Phase II
LINE 1
Storm Water Sewer Improvements

Baughman Company, P.A. 315 Ellis St. Wichita, KS 67211 P 316-262-7271 F 316-262-0149
ENGINEERING | SURVEYING | PLANNING | LANDSCAPE ARCHITECTURE

PROJECT NUMBER: 472-2019-085534
DESIGN: AEG
DRAWN: HWJ
APPROVED: [Signature]
DATE: 08/17/2020

REVISIONS:

SCALE: Noted
SHEET: **13 OF 36**

C:\Projects\R.F.Addition_1802\337\Engineering\Phase 2\STRSWS\SWS Plans.dwg