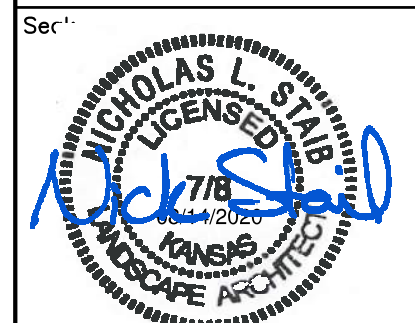


WICHITA, KANSAS
Pool Improvements
HARVEST PARK



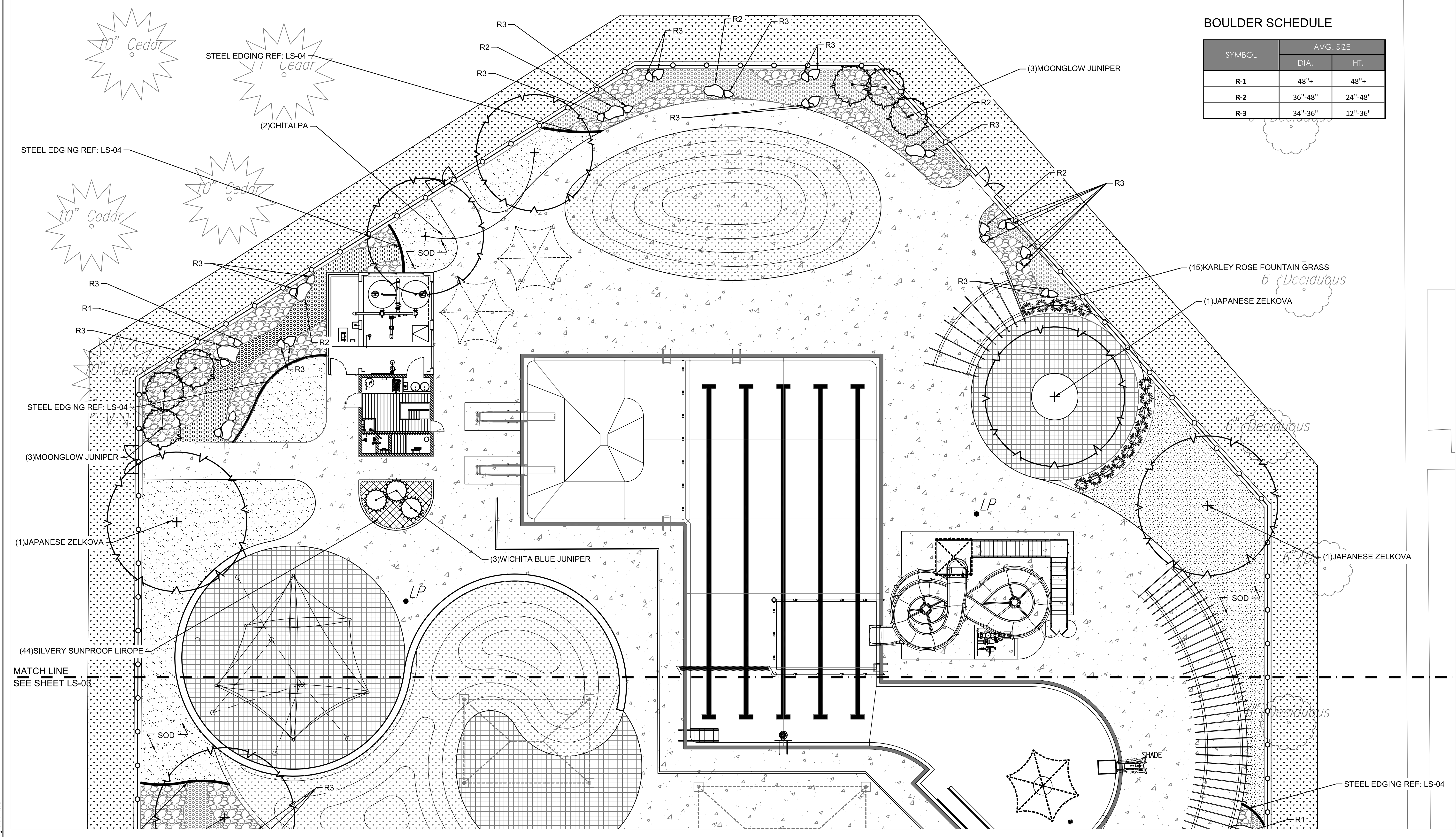
Nick Steib - Landscape Architect
LICENSE #0718
Date: 08-14-20 Job #: 18-512
Drawn: RFT Checked: NLS
Issue: FOR BID

PLANTING
PLAN -
NORTH

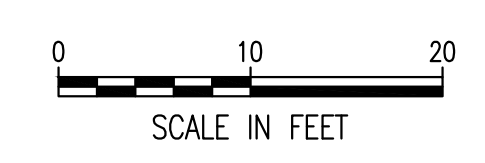
LS-02
Water's Edge Aquatic Design
© 2020

BOULDER SCHEDULE

SYMBOL	AVG. SIZE	
	DIA.	HT.
R-1	48"+	48"+
R-2	36"-48"	24"-48"
R-3	34"-36"	12"-36"



PLANTING PLAN - NORTH



LEGEND

- SHADE TREE, SEE DETAIL SHEET LS-04
- SHRUB PLANTING, SEE DETAIL SHEET LS-04
- ORNAMENTAL PLANTING, SEE DETAIL SHEET LS-04
- PERENNIAL SEE DETAIL SHEET LS-04
- SPRIG WITH LATITUDE 36 BERMUDA, SEE NOTE #3
- SOD WITH LATITUDE 36.
- 4-8" COLORADO RIVER ROCK SEE NOTE #4
- 1 1/2" DARK GRAY GRANITE ROCK MULCH SEE NOTE #4
- GRANITE BOULDERS, SEE DETAIL LS-04

NOTES:

1. SEE SHEET LS-04 FOR PLANTING DETAILS AND PLANT LIST.
2. SEE SHEET LS-01 FOR PLANT LIST
3. ALL SEEDING OPERATIONS SHALL BE PERFORMED PER THE REQUIREMENTS OF THE CITY STANDARD LANDSCAPE SPECIFICATION.
4. ROCK MULCH SHALL BE PLACED OVER 5 OZ. NON-WOVEN GEOTEXTILE FABRIC. COORDINATE WITH GRADING PLAN AND ROCK SIZES TO ENSURE A MINIMUM MULCH DEPTH TO ALLOW FOR 2 LAYERS OF ROCK. THE CONTRACTOR SHALL ENSURE THAT NO PORTION OF GEOTEXTILE IS VISIBLE.
5. PROVIDE SHREDDED HARDWOOD MULCH AT ORNAMENTAL GRASS AND GROUND COVER PLANTING AREAS. SPREAD MULCH TO A DEPTH OF 3". DO NOT USE WEED BARRIER FABRIC/GEOTEXTILE UNDER HARDWOOD MULCH.
6. SODDING OPERATIONS SHALL MEET THE REQUIREMENTS OF THE CITY OF WICHITA STANDARD LANDSCAPE SODDING SPECIFICATION.
7. CONTRACTOR SHALL FOLLOW CITY OF WICHITA STANDARD SPECIFICATIONS AND STANDARD SPECIAL PROVISIONS TO THE CITY OF WICHITA STANDARD SPECIFICATIONS FOR LANDSCAPE.
8. SPRIG ALL DISTURBED AREAS WITH LATITUDE 36 BERMUDA AT A RATE OF 500 BUSHELS PER ACRE, PER CITY STANDARD SPECIFICATION.
9. PROTECT ALL TREES TO REMAIN PER CITY STANDARD SPECIFICATIONS

Saved: 08-14-2020 9:07:32 AM by CLAYTON LEWIS
 Plot Scale: 1:1 08-14-2020 3:06:43 PM by ROY THOMAS
 U:\Wichita-Civil\2018\180189\001\Drawings\Harnest\180189-001-LS-02-Planting Plan North