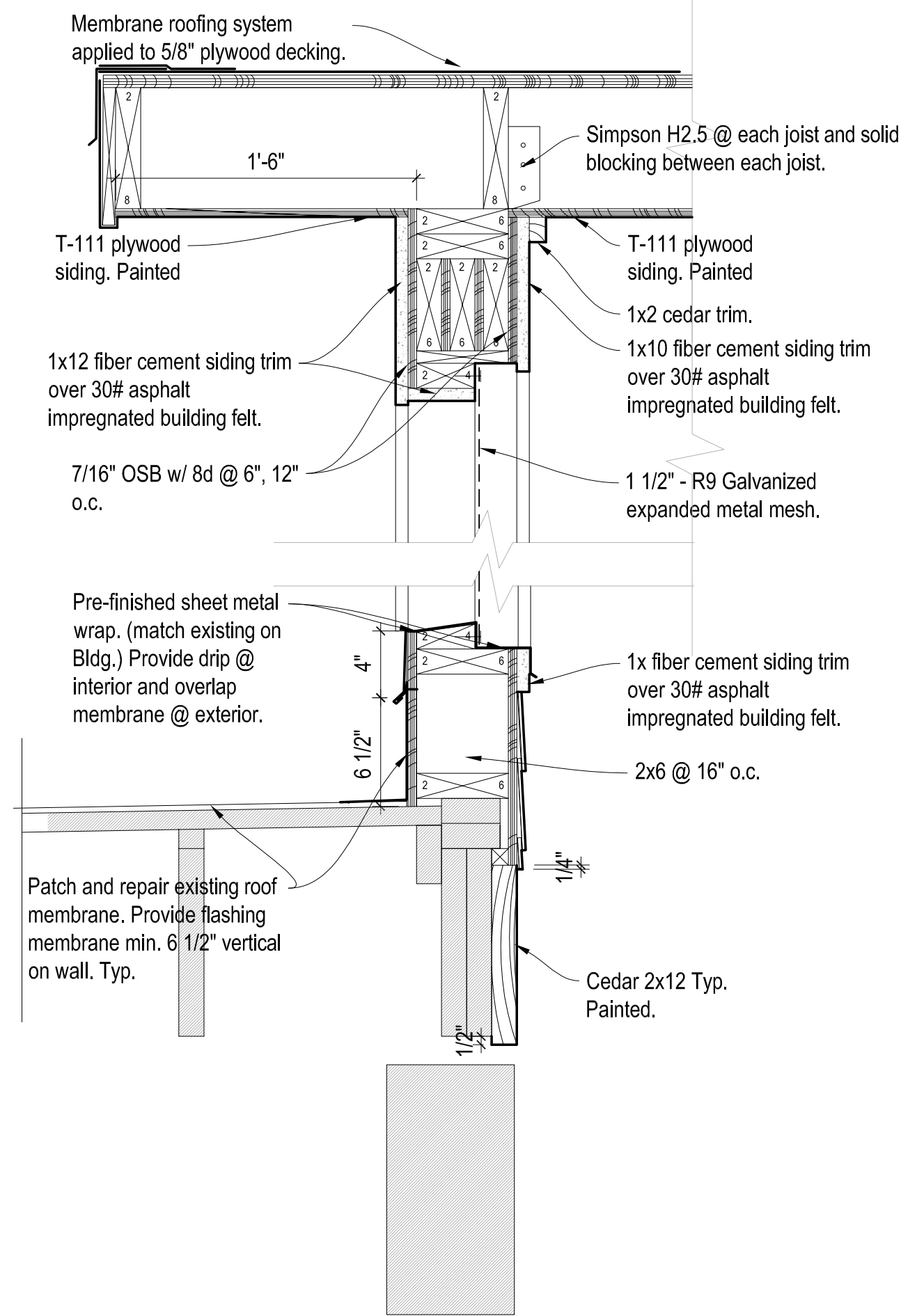
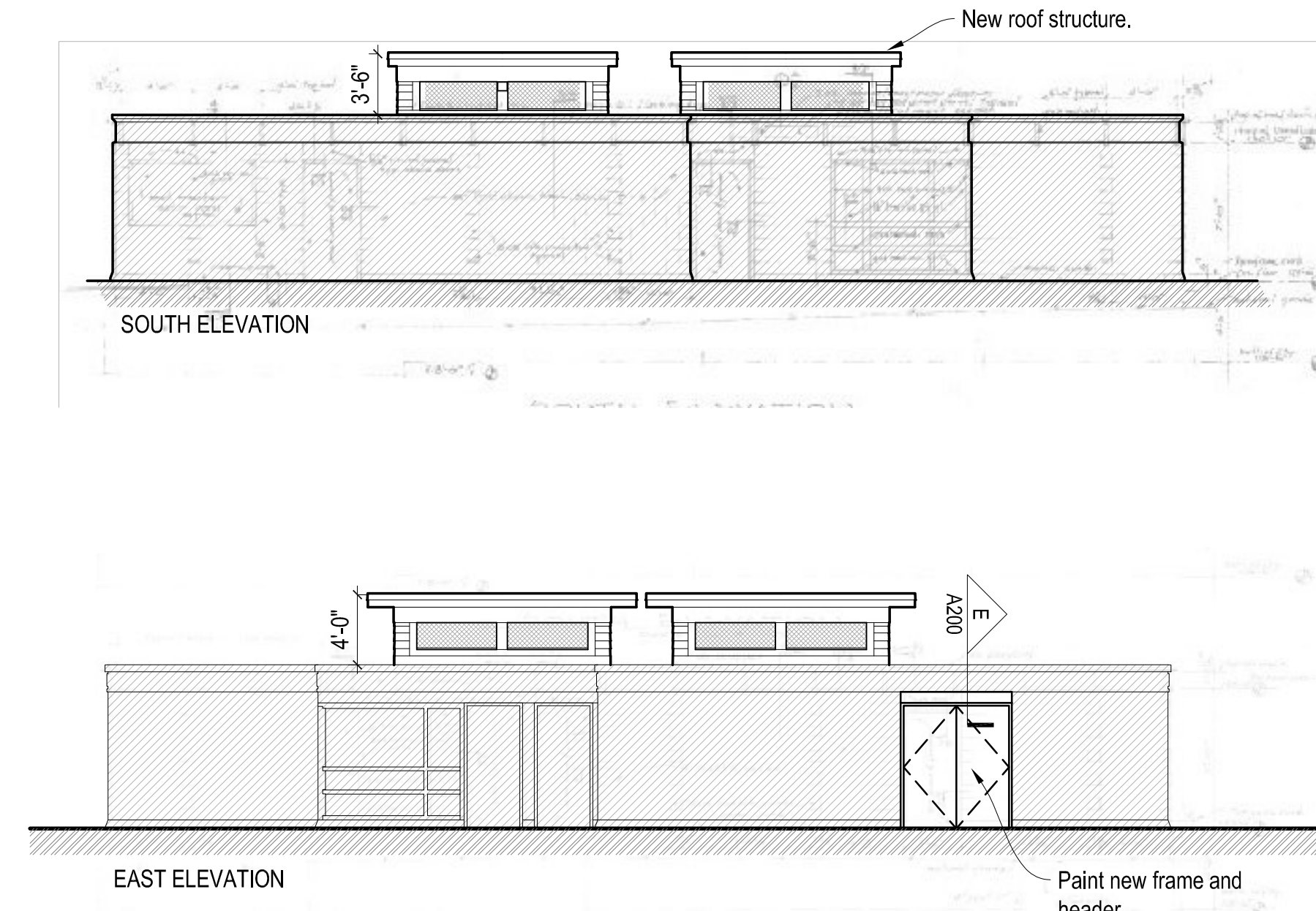


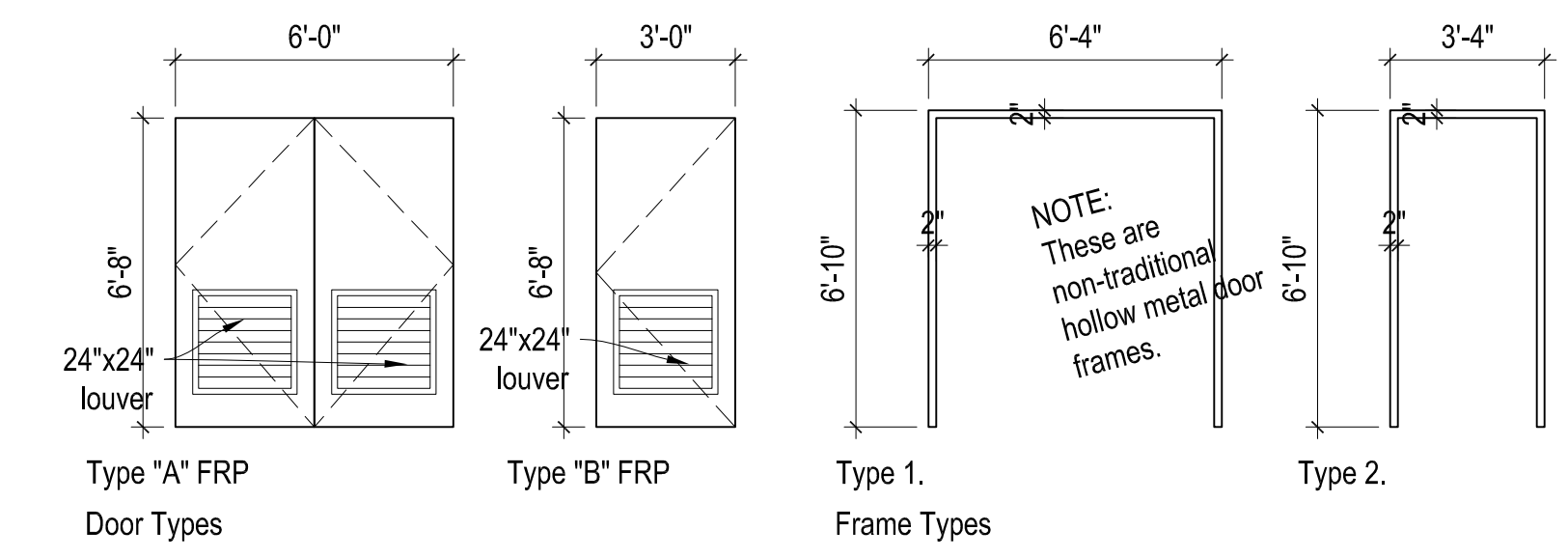
**A SECTION**  
Scale: 1 1/2"=1'-0"



**B SECTION**  
Scale: 1 1/2"=1'-0"



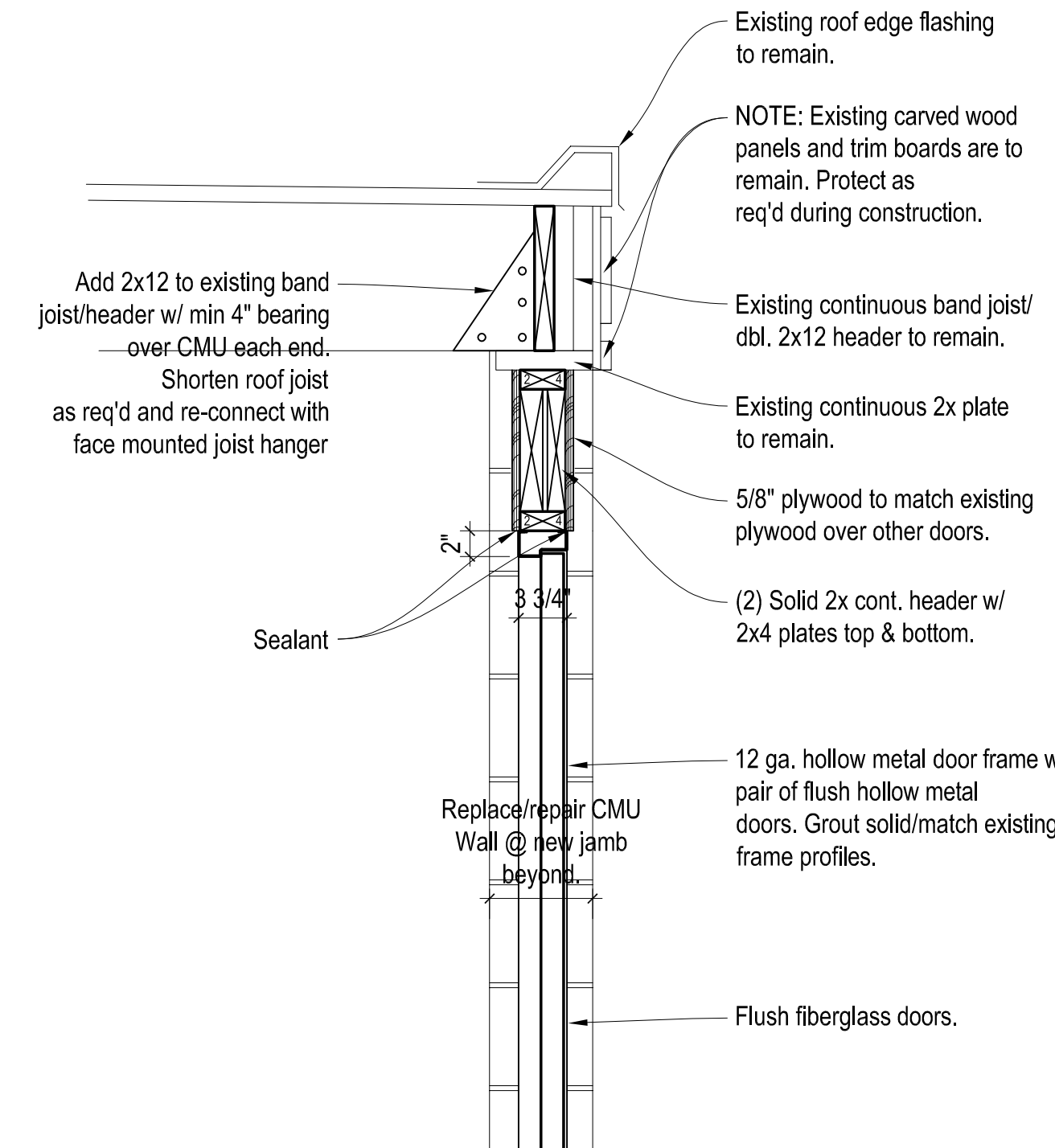
**B EXTERIOR ELEVATION**  
Scale: 1/8"=1'-0"



**D DOOR & FRAME**  
Scale: 1/4"=1'-0"

**Structural Design Loading Parameters**  
Per the requirement No. D(6)(b) of the Plan Submittal Guide and I.B.C. Sec. 1603.1 (Exception) (Item No. 1, 2, 3, and 4). The following design loads are documented:

|                            |   |
|----------------------------|---|
| Roof Live Load -           | 20 p.s.f. with no tributary live load reduction |
| Ground Snow Load -         | 15 p.s.f.                                       |
| Ultimate Design Wind Speed | 115 mph   |
| Nominal Design Wind Speed  | 115 mph   |
| Wind Exposure              | C   |
| Risk Category              | II  |
| Seismic Design Category    | SDC B   |
| Design Cs                  | 3%  |
|                            | $S_{M1}=0.1296, S_{M2}=0.16$                    |



**E HEADER/DOOR FRAME DETAIL**  
Scale: 1/4"=1'-0"

**FIBER CEMENT SIDING AND TRIM**

- Material:**
- Fiber cement lap siding, trim, soffits and accessories;
  - Fiber-cement siding - complies with ASTM C 1186 Type A Grade II.
- Product Warranty:**
- Limited, non-pro-rated product warranty.
- Lap siding for 30 years.
  - Soffit panels for 30 years.
  - Trim boards for 15 years.
- Products:**
- Lap Siding: Type: Smooth - sizes shown
  - Soffit Panels: Type: Smooth vented, provides 5 square inches (32.3 sq. cm) of net free ventilation per linear foot.
  - Trim Boards: Type: smooth texture, sizes as indicated, thickness 3/4" (19mm).
  - Finish: Boards and panels shall be factory primed.
- Installation:**
- Use only corrosion resistant fasteners. Acceptable are stainless steel or hot-dipped galvanized nails.
  - Drive nails perpendicular to the framing lumber and the wood trim product; drive nails flush with the product's surface ONLY AS DIRECTED BY MANUFACTURER.
  - Install materials in strict accordance with manufacturer's installation instructions.
  - Install flashing around all wall openings.
- Finishing:**
- Finish factory primed siding with a minimum of one coat of high quality 100 percent acrylic or latex or oil based exterior grade paint within 180 days of installation. Follow paint manufacturer's written product recommendation and written application instructions.

**CEDAR SIDING AND TRIM**

- Material:**
- Western Red Cedar.
- Certified Wood:**
- Operations shall be FSC and PEFC Chain of Custody certified.
- Grade: Clear:**
- This is a fine appearance grade NLGA 201b that allows only slightly more WCLIB 106-agrowth characteristics than Clear Heart. Pieces are of mixed grain. These mixed grain (vertical and flat) pieces are graded from the surfaced face.
- Bevel Siding:**
- Solid KD Clear Face: Smooth.
- Installation:**
- Use only corrosion resistant fasteners. Acceptable are stainless steel or hot-dipped galvanized nails.
  - Joints shall fall over framing lumber and shall be double nailed. Trim boards of 10 inches (254 mm) or greater in width require 3 nails evenly spaced across the face of the board. Do not nail any less than 1/2 inch (13 mm) from any edge and fasten at a minimum of every 24 inches (610 mm) on center.
  - Drive nails perpendicular to the framing lumber and the wood trim product; drive nails flush with the product's surface. Nails shall penetrate at least 1-1/4 inches (32 mm) into the structural framing.
- Finishing:**
- Finish with Cabot® Clear Wood Protector or approved equal. **Finish all 6 sides of the cedar before it is installed.**

END OF SECTION

END OF SECTION

waters edge  
AQUATIC DESIGN

11205 W. 79th St.  
Lenexa, KS 66214

T. 913.438.4338  
www.WeDesignPools.com

Kansas STATE CERTIFICATE  
OF AUTHORITY #E-990

PEC

landworks  
STUDIO

ARCHITECTURAL  
URBAN PRAIRIE  
COLLABORATIVE, P.C.

H&B  
HOSS & BROWN  
ENGINEERS

WICHITA, KANSAS  
Pool Improvements  
MINISA PARK

PAUL C. MINTO  
LICENSED  
3118  
KANSAS  
PROFESSIONAL ARCHITECT  
08-14-2020

Pool Minto - Architect  
LICENSE #3118

Dates-14-2020 Job # 18-512

Drawn: Checked:

Issue: CONSTRUCTION DOCUMENTS

ARCHITECTURAL  
PLAN

A-200

Water's Edge Aquatic Design  
© 2020