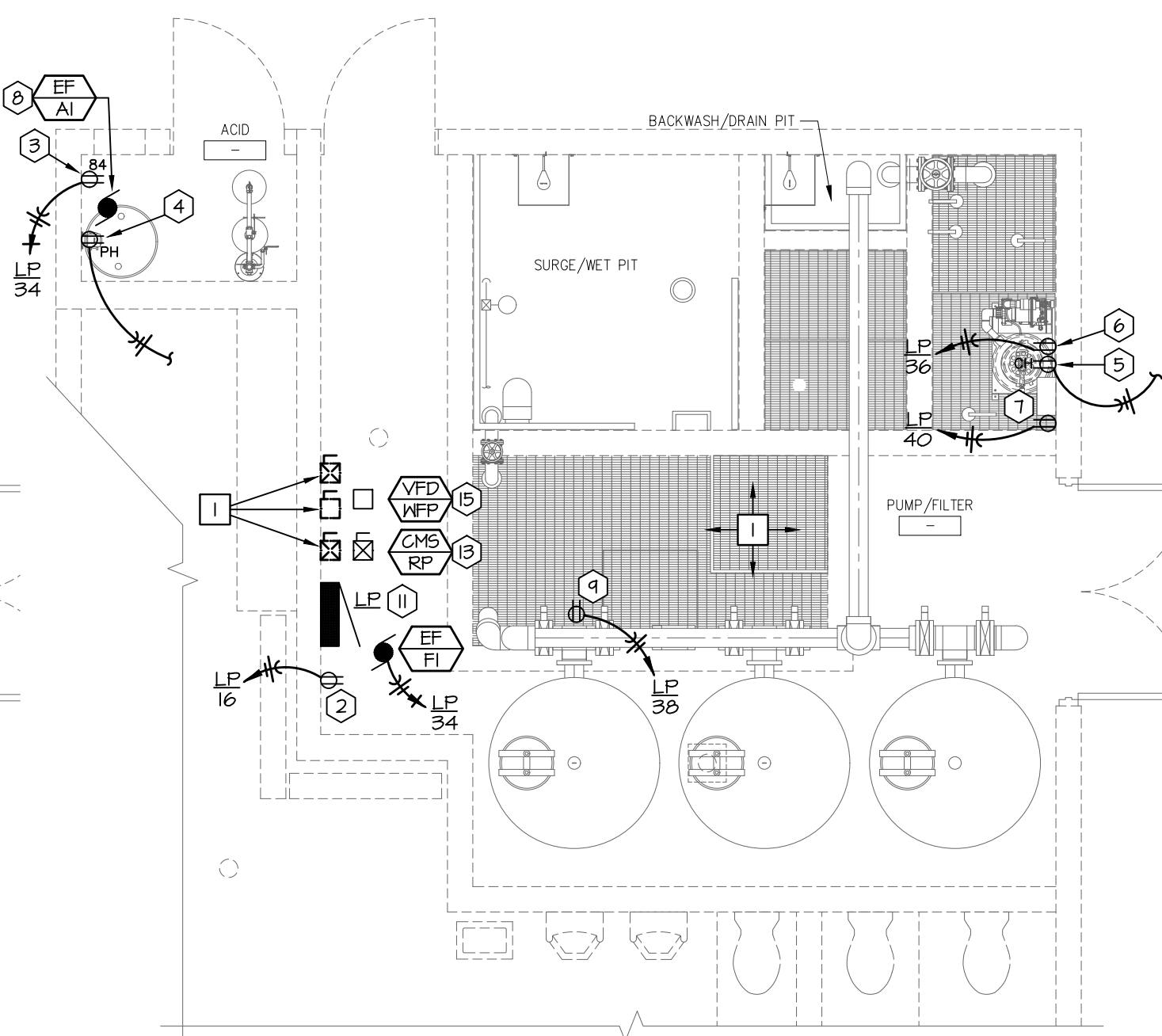
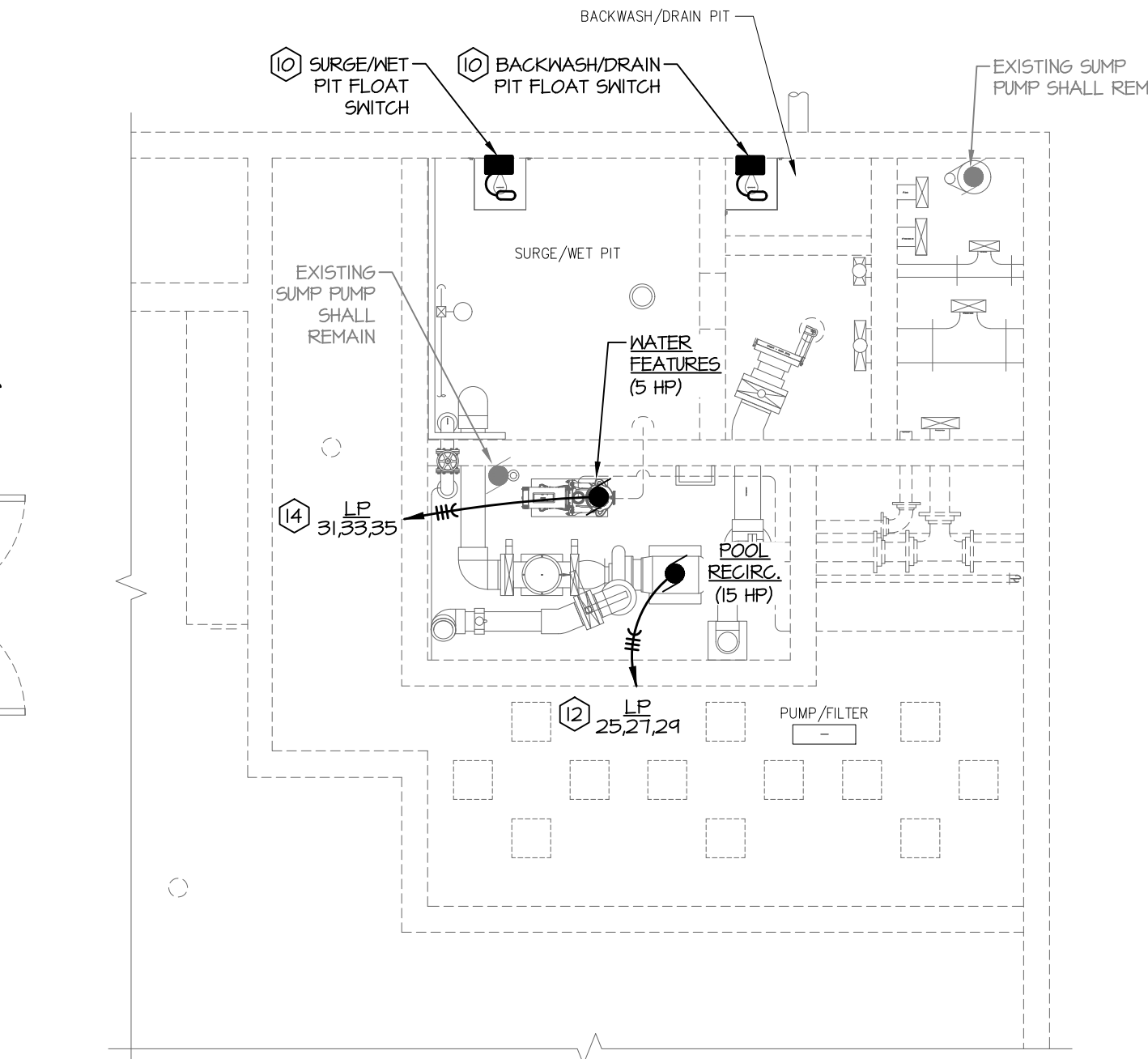


**3 Lighting Plan**  
Scale: 1/4" = 1'-0"



**2 Electrical Plan - Above Grade**  
Scale: 1/4" = 1'-0"



**1 Electrical Plan - Below Grade**  
Scale: 1/4" = 1'-0"

**GENERAL NOTES:**

- A. THESE DRAWINGS ARE DIAGRAMMATIC IN NATURE AND INDICATE THE GENERAL EXTENT OF THE WORK. THE ELECTRICAL CONTRACTOR SHALL PROVIDE ALL PULL BOXES, JUNCTION BOXES AND INCIDENTAL MATERIALS AND LABOR FOR A COMPLETE AND FULLY FUNCTIONAL SYSTEM.
- B. ELECTRICAL CONTRACTOR SHALL DERATE CONDUCTORS AS REQUIRED BY THE N.E.C. WHEN GROUDED IN COMMON BACKWAYS.
- C. ALL WIRES RUN BELOW GRADE, IN CONCRETE THAT IS IN DIRECT CONTACT WITH THE EARTH, OR MASONRY THAT IS IN DIRECT CONTACT WITH THE EARTH SHALL BE MET LOCATION LISTED.
- D. ALL RECEPTACLES SHALL BE GFI PROTECTED UNLESS NOTED OTHERWISE. AT CONTRACTOR'S OPTION, GFI BREAKERS OR RECEPTACLES MAY BE USED. RECEPTACLES SERVING CONCESSIONS REFRIGERATION EQUIPMENT, CHEMICAL CONTROLLERS, AND EXHAUST FANS SHALL NOT BE GFI PROTECTED.
- E. ANY INTERRUPTION OF EXISTING SERVICES AND/OR EQUIPMENT SHALL BE PERFORMED AT A TIME APPROVED IN ADVANCE BY THE OWNER'S REPRESENTATIVE SO AS NOT TO INTERFERE WITH THE PRESENT BUILDING OPERATION.
- F. REMOVE ALL ELECTRICAL ITEMS ON THE SITE AND IN THE FILTER, PUMP, AND CHEMICAL AREAS NO LONGER REQUIRED AFTER THE RENOVATION. THIS SHALL INCLUDE BUT IS NOT LIMITED TO PUMPS, FILTERS, STARTERS, FEEDERS, AND CONTROLS.

**DEMO PLAN NOTES:**

1. REMOVE PUMP MOTOR STARTERS AND ALL ELECTRICAL FEEDERS WITHIN PUMP HOUSE. PREPARE FOR INSTALLATION OF NEW ELECTRICAL CIRCUITS. CONFIRM EQUIPMENT TO BE REMOVED WITH POOL ENGINEER.

**PLAN NOTES:**

1. CONNECT TO EXISTING LIGHTING CIRCUIT.
2. IRRIGATION CONTROLLER RECEPTACLE. COORDINATE LOCATION WITH GENERAL CONTRACTOR AND OWNER.
3. EXHAUST FAN RECEPTACLE. COORDINATE EXACT HEIGHT AND LOCATION WITH MECHANICAL CONTRACTOR PRIOR TO ROUGH-IN.
4. PH FEEDER RECEPTACLE. CONNECT CIRCUIT TO CHEMICAL CONTROLLER. SEE CIRCULATION PUMP CONTROL SCHEMATIC ON SHEET SP-E2 FOR MORE INFORMATION. PROVIDE ENGRAVED COVERPLATE DENOTING POOL SERVED AND PH FEEDER.
5. CHLORINE FEEDER RECEPTACLE. CONNECT CIRCUIT TO CHEMICAL CONTROLLER. SEE CIRCULATION PUMP CONTROL SCHEMATIC ON SHEET SP-E2 FOR MORE INFORMATION. PROVIDE ENGRAVED COVERPLATE DENOTING POOL SERVED AND CHLORINE FEEDER.
6. CHLORINE FEEDER CONSTANT POWER RECEPTACLE. PROVIDE ENGRAVED COVERPLATE DENOTING POOL SERVED AND CHLORINE FEEDER. COORDINATE EXACT HEIGHT OF RECEPTACLE WITH MANUFACTURER.
7. CHEMICAL CONTROLLER RECEPTACLE. PROVIDE ENGRAVED COVERPLATE DENOTING POOL SERVED AND CHEMICAL CONTROLLER.
8. PROVIDE 6'-0" NEMA PLUG AND COORDINATE FOR EXHAUST FAN.
9. PROVIDE 120V OUTLET FOR FLOW METER. MOUNT TO UNISTRUT APPROXIMATELY 48" AFF. FEEDER BETWEEN UNISTRUT AND ELECTRICAL PANEL SHALL BE BELOW GRADE.
10. PROVIDE ZOELLER SWITCH-MATE PIGGYBACK VARIABLE LEVEL FLOAT SWITCH (VLF). FLOAT SHALL BE NORMALLY OPEN (NO) OR NORMALLY CLOSED (NC) PER NOTES BE RATED FOR 15A AT 125V, AND SHALL NOT CONTAIN MERCURY. COORDINATE MOUNTING HEIGHT WITH POOL ENGINEERS. INSTALL PER MANUFACTURER'S INSTRUCTIONS.
11. REFER TO ELECTRICAL RISER DIAGRAM ON SHEET SP-E3 FOR PANEL REPLACEMENT INFORMATION.
12. ROUTE ALL FEEDERS BELOW GRADE BETWEEN COMBINATION MOTOR STARTER AND PUMP MOTOR. REFER TO COMBINATION MOTOR STARTER SCHEDULE FOR PUMP POWER INFORMATION. FEEDERS SHALL BE SURFACE MOUNTED ALONG VERTICAL SURFACES.
13. PROVIDE COMBINATION MOTOR STARTER AT APPROXIMATELY 48" AFF. CONDUIT TO PUMP SHALL BE BELOW GRADE WHEN ROUTED HORIZONTALLY. CONDUIT TO PUMP SHALL BE SURFACE MOUNTED WHEN ROUTED VERTICALLY. COORDINATE INSTALLATION WITH POOL CONTRACTOR.
14. ROUTE ALL FEEDERS BELOW GRADE BETWEEN VARIABLE FREQUENCY DRIVE AND PUMP MOTOR. REFER TO VARIABLE FREQUENCY DRIVE SCHEDULE FOR PUMP POWER INFORMATION. FEEDERS SHALL BE SURFACE MOUNTED ALONG VERTICAL SURFACES.
15. PROVIDE VARIABLE FREQUENCY DRIVE AT APPROXIMATELY 48" AFF. CONDUIT TO PUMP SHALL BE BELOW GRADE WHEN ROUTED HORIZONTALLY. CONDUIT TO PUMP SHALL BE SURFACE MOUNTED WHEN ROUTED VERTICALLY. COORDINATE INSTALLATION WITH POOL CONTRACTOR.



WICHITA, KANSAS  
Pool Improvements  
MINISA PARK



CASEY JOHN STEINER  
LICENSE #19423

Date: 8-14-20 Job #: 1820529

Drawn: CDW Checked: MST

Issue: CONSTRUCTION DOCUMENTS

ELECTRICAL  
PLAN

SP-E1