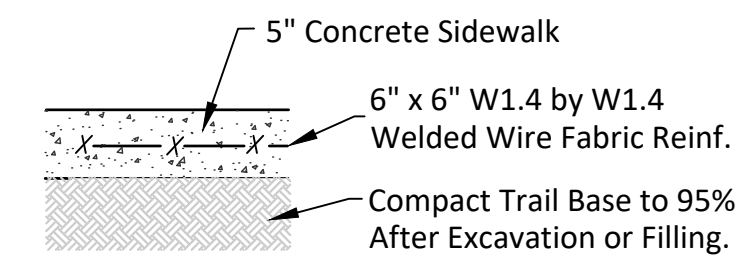
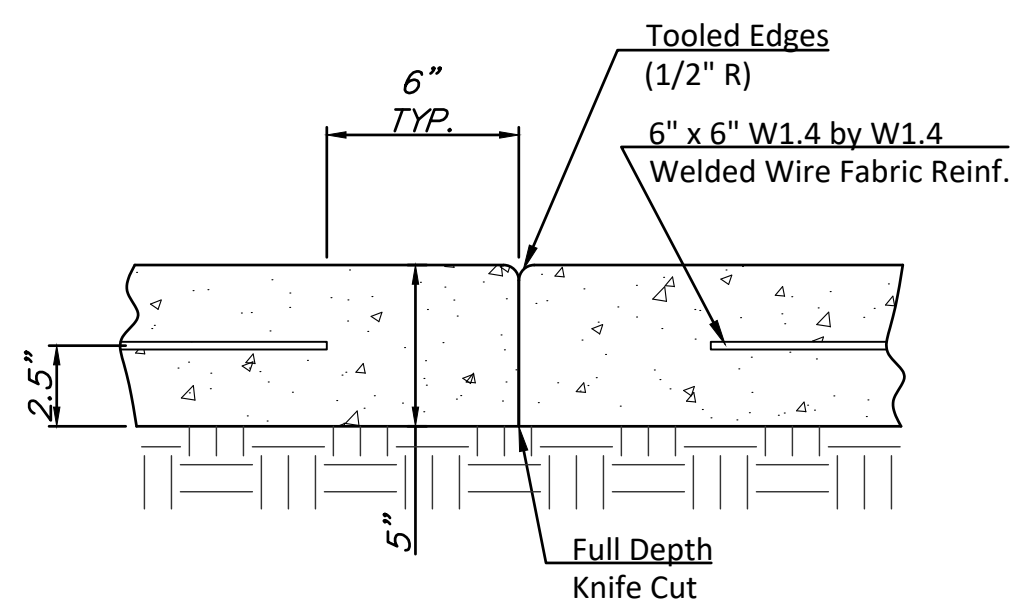


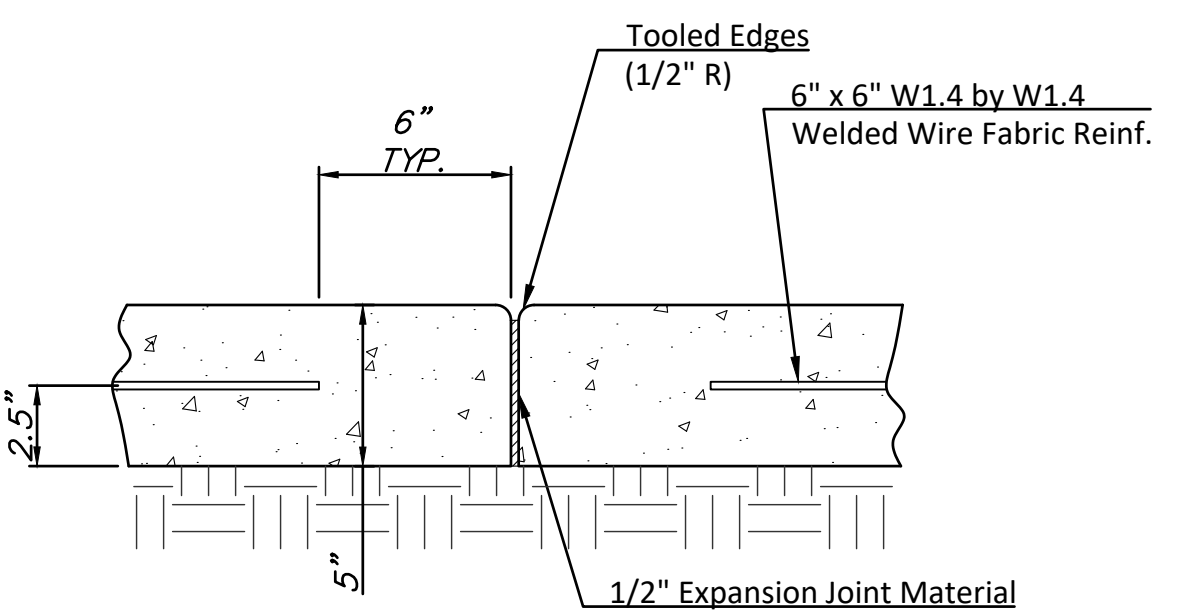
**SWALE SECTION**



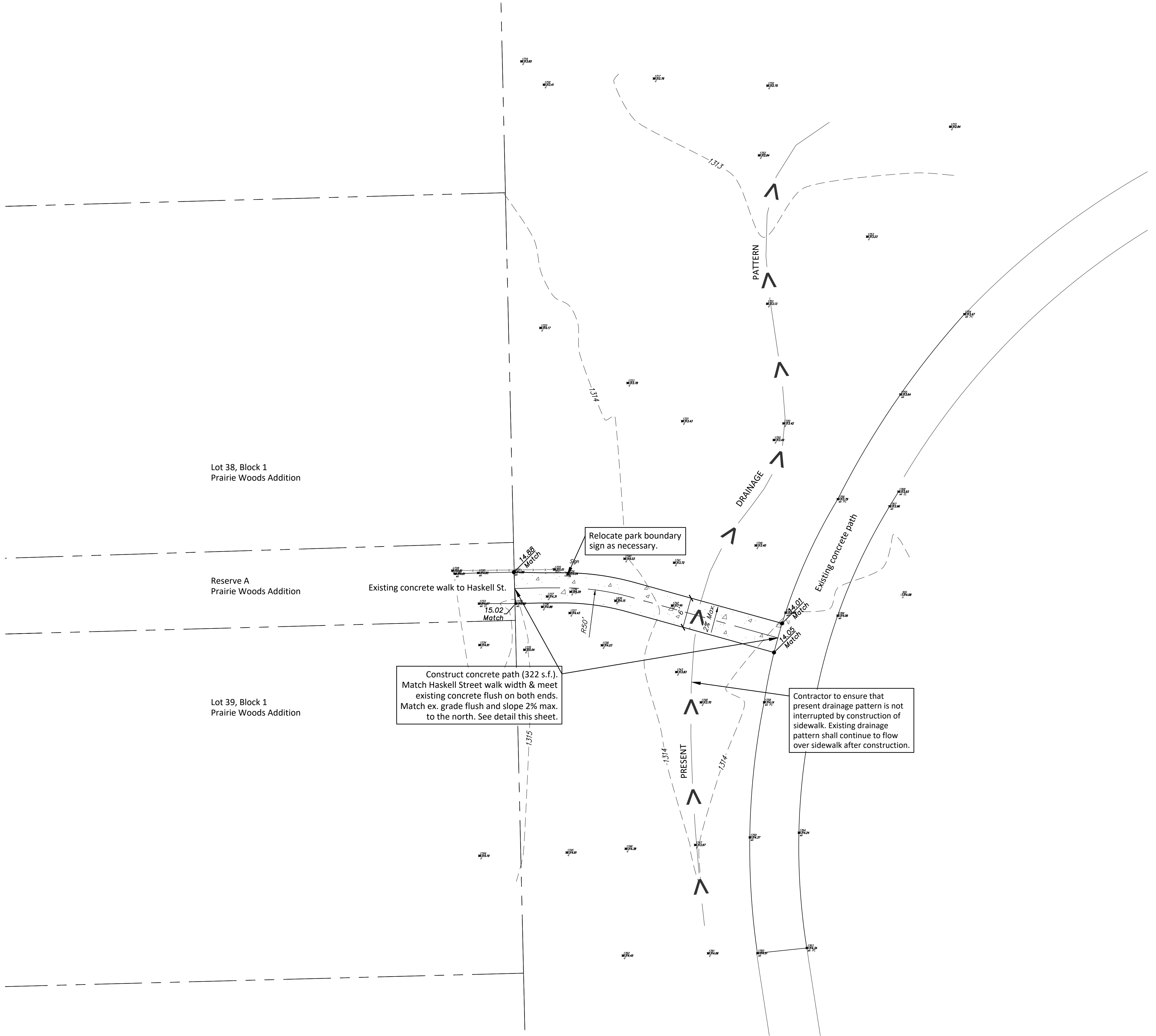
**CONCRETE SIDEWALK SECTION**



**TYPICAL CONTRACTION JOINT DETAIL**



**TYPICAL EXPANSION JOINT DETAIL**



Construct concrete path (322 s.f.). Match Haskell Street walk width & meet existing concrete flush on both ends. Match ex. grade flush and slope 2% max. to the north. See detail this sheet.

Relocate park boundary sign as necessary.

Contractor to ensure that present drainage pattern is not interrupted by construction of sidewalk. Existing drainage pattern shall continue to flow over sidewalk after construction.