

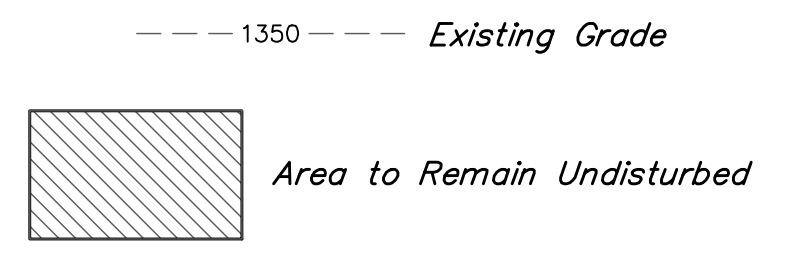
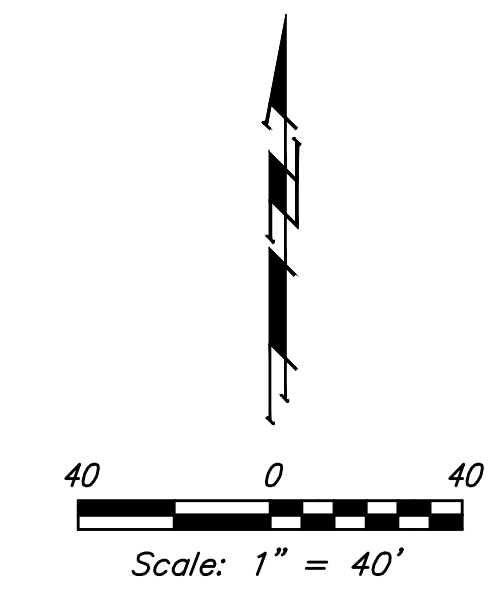
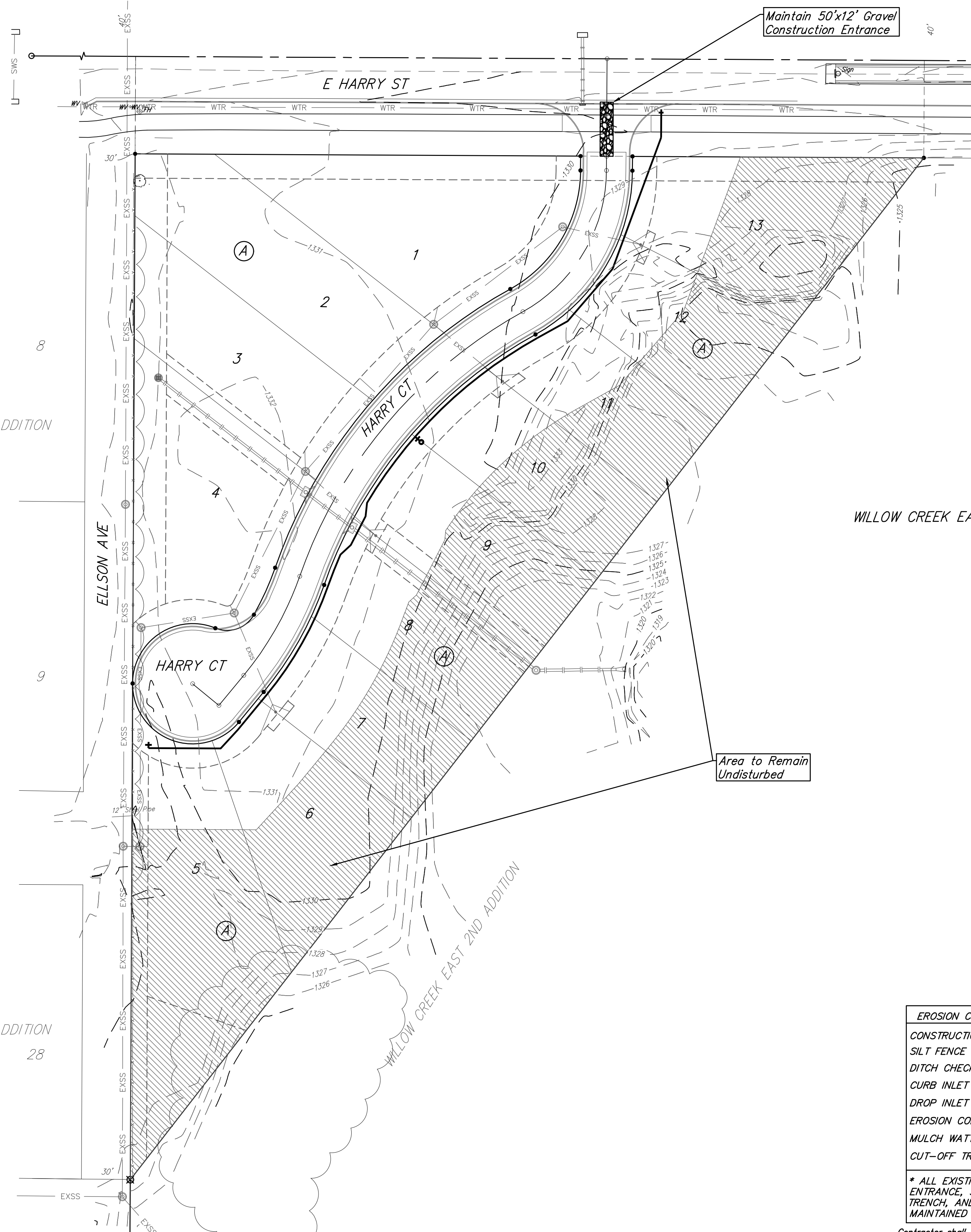
BENCHMARKS:
 CHISELED "□", TOP OF CURB INLET, NW COR.
 OF CURB INLET, 77.8' W. & 16.1' N. OF NW
 COR., E1/2, NW1/4, SEC. 34, TWP. 27-S,
 R-2-E.
 ELEV. = 1332.09 NAVD88

CHISELED "□", TOP OF CURB INLET, NW COR.
 OF CURB INLET, 272.1' E. & 16.1' N. OF NW
 COR., E1/2, NW1/4, SEC. 34, TWP. 27-S,
 R-2-E.
 ELEV. = 1329.53 NAVD88

WILLOW CREEK EAST 4TH ADDITION

SLOAN'S ADDITION

WILLOW CREEK EAST 4TH ADDITION



SLOAN'S ADDITION

28

WILLOW CREEK EAST 2ND ADDITION

EROSION CONTROL MEASURE	INSTALL	MAINTAIN
CONSTRUCTION ENTRANCE (EA)	0	1
SILT FENCE (LF)	0	0
DITCH CHECKS (EA)	0	0
CURB INLET PROTECTION (EA)	0	0
DROP INLET PROTECTION (EA)	0	0
EROSION CONTROL MAT (SY)	0	0
MULCH WATTLE SED. BARRIER (LF)	0	0
CUT-OFF TRENCH (LF)	0	0

* ALL EXISTING BMPs INCLUDING CONSTRUCTION ENTRANCE, SEDIMENT BARRIERS, SILT FENCE, CUT-OFF TRENCH, AND EROSION CONTROL MAT SHALL BE MAINTAINED AND REPAIRED IF NECESSARY.

Contractor shall make sure all erosion control is in place before project is accepted. This plan represents the minimum standard. Any additional erosion control measures shall be installed by the Contractor as needed.



Baughman

Willow Creek East 4th Addition
EROSION CONTROL
 Water Distribution System

Baughman Company, P.A. 315 Ellis St. Wichita, KS 67211 P 316-262-7271 F 316-262-0149
 ENGINEERING | SURVEYING | PLANNING | LANDSCAPE ARCHITECTURE

PROJECT NUMBER 448-2020-012803	DESIGN AEG	DRAWN HJW
REVISIONS:	APPROVED	DATE 09/14/20
	SCALE Noted	SHEET

5 OF 12