

# GENERAL NOTES:

- The Contractor shall comply with all applicable safety regulations. All construction shall be completed following current City Standard Specifications and Special Provisions.
- Contractor will be required to provide notice to utility companies a minimum of seventy-two (72) hours prior to any excavation, as follows:  
 Kansas One-Call 687-2470  
 The Contractor must notify the following in case of an emergency:  
 AT&T 1-800-246-8464  
 Black Hills Energy 1-800-694-8989  
 City of Wichita Water & Sewer 1-316-219-8921  
 City of Wichita Stormwater 1-316-268-4090  
 City of Wichita Traffic 1-316-268-4034  
 Cox Communications 1-888-249-3530  
 Kansas Gas Service 1-888-482-4950  
 Evergy 1-800-544-4857
- Utility service lines, poles, etc. are to be adjusted as necessary by others prior to construction unless the plans specifically call for their adjustment by the Contractor or unless the plans specifically identify a utility to be adjusted by its owner during construction. Existing utilities and their location, as shown on the plans, represent the best information obtainable for design. The Contractor will be required to work around existing utilities within the right-of-way which do not conflict with proposed construction.
- Rubble from the removal of miscellaneous structures and excess excavation which is to be wasted shall be disposed of on sites to be provided by the Contractor. These sites shall be approved by the Engineer as to suitability, appearance and site location. Locations, in the opinion of the Engineer, that will leave an unsightly appearance will not be approved. All disposal sites must be approved by the Kansas Department of Health and Environment. Material either stockpiled or disposed of in a flood plain will require a Kansas State Board of Agriculture permit. Any material dumped in waters of the United States or wetlands is subject to U.S. Corps. of Engineers permitting regulations. Any material buried or stockpiled beyond approved construction limits will require additional archaeological investigations unless buried in a previously approved borrow location.
- Trees and shrubs in public right-of-way which are in direct conflict with proposed new construction shall be removed by the Contractor with the City Engineer's approval. Trees and shrubs which are not in direct conflict with proposed new construction shall be saved and protected from damage.
- The Contractor shall give all property owners and/or tenants of developed property abutting the construction of this project a minimum of ten (10) days notice prior to start of construction.
- The Contractor shall be responsible for preserving property irons. The Contractor will be required to re-establish any property irons which are damaged or destroyed by his construction operations. Such irons shall be re-established by a licensed land surveyor in accordance with state laws.
- All elevations shown are NGVD29.
- All areas disturbed during construction that will not be under proposed pavement shall be restored to match existing conditions.
- Opening and closing of water valves shall be done slowly to prevent damage to the water distribution system from water hammer. All valves closed by the contractor must be reopened as new construction permits. The project inspector must ascertain that any valve closed by the Contractor is reopened. The contractor will be permitted to operate water valves only when the project inspector assigned to the project is present.
- The Contractor shall lay a Tracer Wire and Set Test Stations along all water pipe installed in accordance with City Specifications and Tracer Wire Detail on detail sheet WL-101, cost is subsidiary to pipe installation.
- The Contractor shall protect from damage and support existing utilities through construction as approved by the utility owner and the Engineer at the contractor's expense.
- Contractor shall limit the extent of trench openings overnight and weekends to less than 50 feet.

- All existing and proposed erosion control measures including silt fencing, erosion control mat, straw bales, inlet barriers, and const. entrance shall be maintained throughout construction by the contractor and until project is accepted by the City of Wichita. The on-site engineer shall complete weekly reports on the status of erosion control measures. The contractor shall be required to comply with maintenance and/or replacement of erosion control measures as determined by the on-site engineer until project is accepted by City of Wichita. Maintenance and/or replacement of erosion control measures to be paid by L.S. bid item "Maintain Existing BMPs".
- All of Hoover St. R/W shall be seeded and mulched as follows:  
 Seed -- Kansas Premium Fescue Blend; 8 lbs. PLS/1000 Sq. Ft.  
 Annual Rye grass; 3 lbs./1000 Sq. Ft.  
 Fertilizer -- 12-24-12 Ratio; 45 Lbs./Ac.  
 Mulch -- 2 Tons Prairie Hay/Ac.  
 All other disturbed areas are to be seeded as follows:  
 Seed -- Rye grass; 5 lbs./1000 Sq. Ft.  
 All costs associated with seeding including mobilization, preparation of ground, seeding, fertilizing, mulching, etc. shall be included in the L.S. bid item "Seeding".  
 An additional bid item for "Seeding, Temporary" has been included and may be used at the discretion of the design engineer. Temporary seed shall be Annual Rye at 5 lbs./1000 Sq. Ft. unless otherwise noted and shall be planted when permanent seed or sod cannot be used due to seasonal limitations. If the "Seeding, Temporary" bid item is not used, 100% of the pay item will be deducted from the contract. All costs associated with temporary seeding including mobilization, preparation of ground, seeding, etc., shall be included in the L.S. bid item "Seeding, Temporary".
- The developer for this project is Jay W. Russell, (316)722-2417 and Ritchie Development, Kevin Mullen, (316)684-7300.
- All excess excavation shall be spread or stockpiled at a location to be determined by the project engineer.

## Benchmarks

BM #1: Crows foot cut at SE corner of curb inlet south side of Kollmeyer near NE corner of Lot 82, Block A, Edge Water Addition.  
 Elev. = 1335.36 NGVD29

BM #2: Brass disc on top of curb by fire hydrant at SE corner of intersection of Kollmeyer and Kollmeyer Ct. (Lots 63-82, Block A) at the NW corner of Lot 82, Block A, Edge Water Addition.  
 Elev. = 1336.61 NGVD29

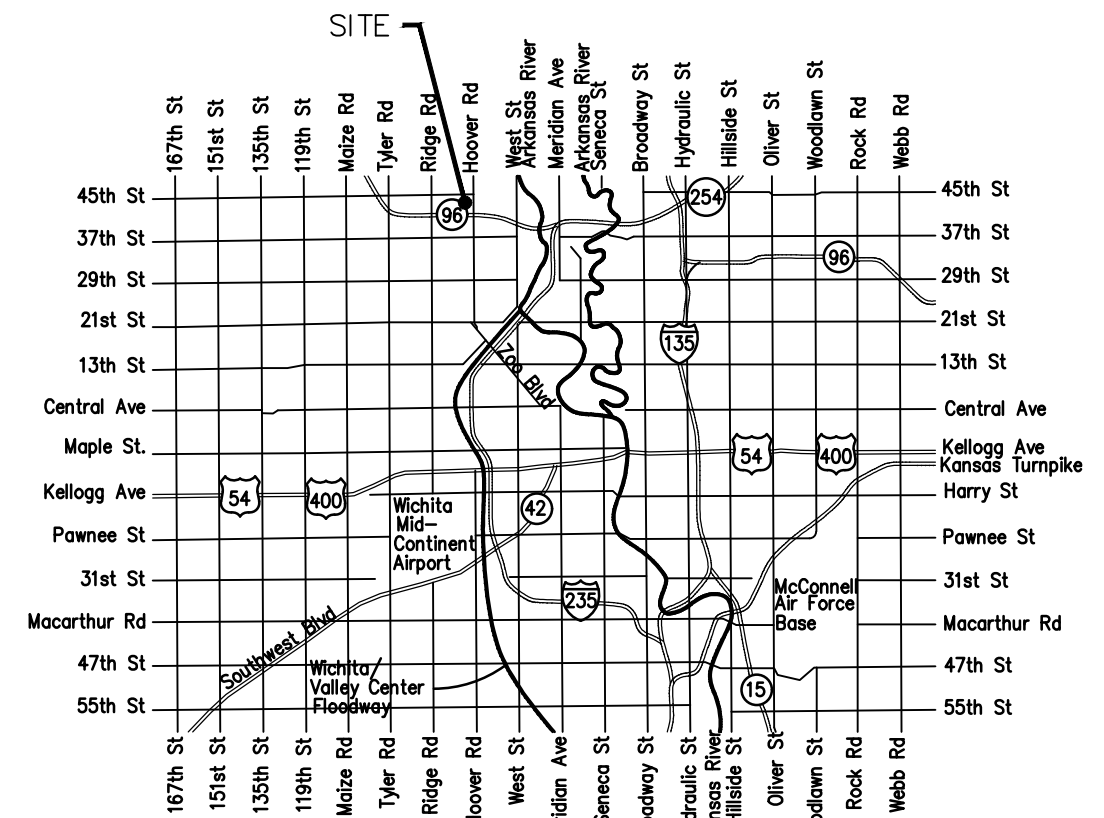
# WATER DISTRIBUTION SYSTEM to serve EDGE WATER 3RD ADD. - PH. 2&3

## CITY OF WICHITA, KANSAS

Gary Janzen, P.E. City Engineer

Phase 2  
 Project Number  
 448-90917  
 O.C.A. Number  
 810043

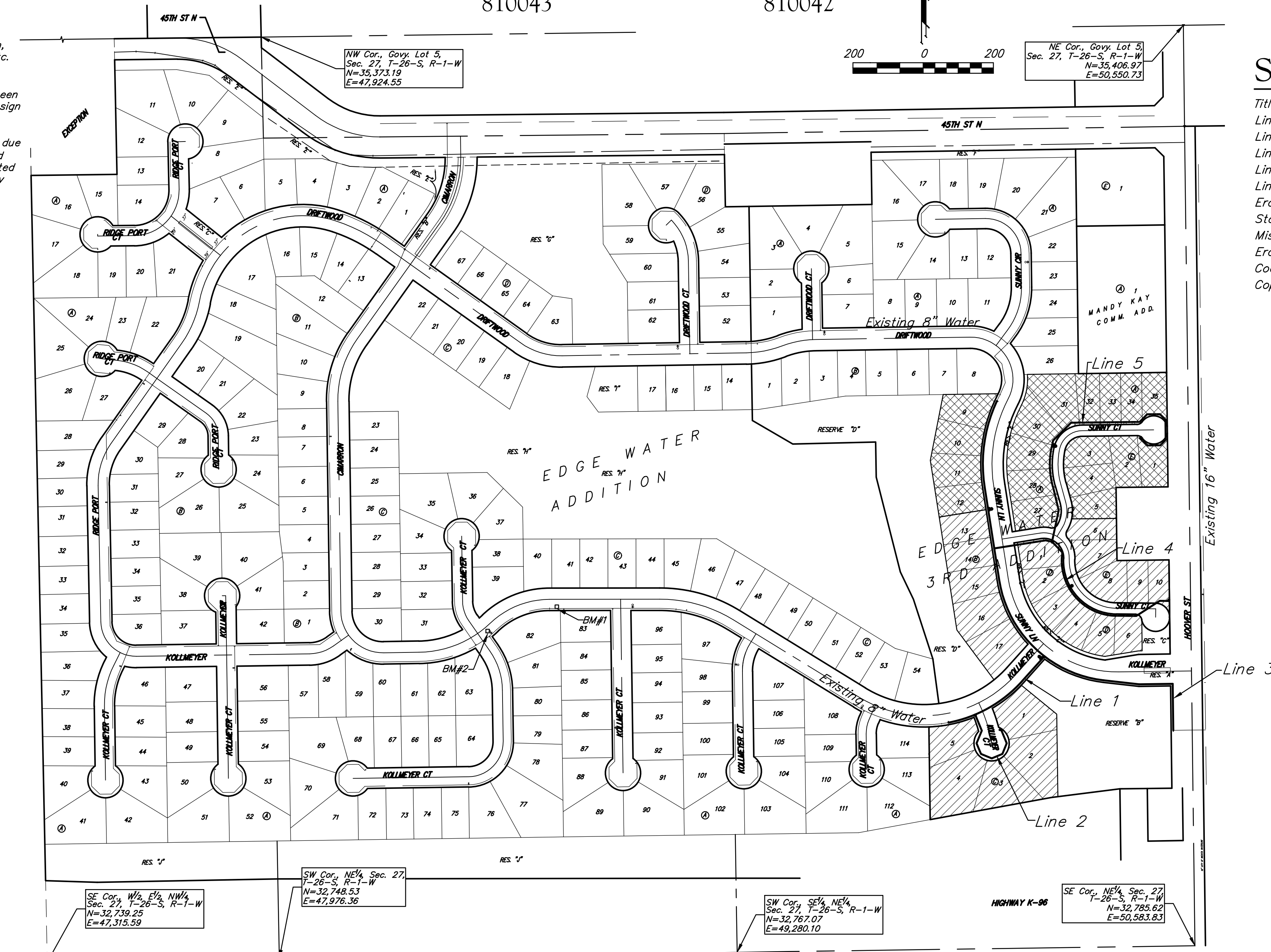
Phase 3  
 Project Number  
 448-90317  
 O.C.A. Number  
 810042



## Vicinity Map

## Sheet Index

Title Sheet	1
Line 1	2-3
Line 2	4
Line 3	5
Line 4	6
Line 5	7
Erosion Control/Grading Plan	8
Std. Water Assembly Detail	9
Miscellaneous BMP Details	10
Erosion Control BMP Details	11-15
Coordinate Sheet	16
Copy of Plat	17



Benefit District Phase 2  
 Benefit District Phase 3

August 2020



Baughman Company, P.A. 315 Ellis St. Wichita, KS 67211 P 316-262-7271 F 316-262-0143  
 ENGINEERING | SURVEYING | PLANNING | LANDSCAPE ARCHITECTURE

E:\Projects\Edge Water 3rd\_Engineering\Phase 2-3\Water\Water.dwg

