

BENCHMARKS:
 BM #1: Crows foot cut at SE corner of curb inlet south side of Kollmeyer near NE corner of Lot 82, Block A, Edge Water Addition.
 Elev. = 1335.36 NGVD29

BM #2: Brass disc on top of curb by fire hydrant at SE corner of intersection of Kollmeyer and Kollmeyer Ct. (Lots 63-82, Block A) at the NW corner of Lot 82, Block A, Edge Water Addition.
 Elev. = 1336.61 NGVD29

Baseline = CL Kollmeyer

All water lines on this sheet are included in Phase 2.

Curve #1				
Curve Data Based on Waterline				
Rad. = 376' Delta = 40°25'56" Tangent = 138.46'				
Arc = 245.33' L.C. = 259.86' Def./Ft. = 4.94422 Min.				
Chord Lengths	Arc	8' Right	Defl.	Total Defl.
Station				
0+00.00	-	-	0°00'00"	0°00'00"
0+25.00	25.00'	27.61'	2°03'36"	2°03'36"
0+50.00	25.00'	27.61'	2°03'37"	4°07'13"
0+75.00	25.00'	27.61'	2°03'36"	6°10'49"
0+79.28	4.28'	4.73'	0°21'10"	6°31'59"
1+00.00	20.72'	22.88'	1°42'26"	8°14'25"
1+25.00	25.00'	27.61'	2°03'37"	10°18'02"
1+50.00	25.00'	27.61'	2°03'36"	12°21'38"
1+75.00	25.00'	27.61'	2°03'36"	14°25'14"
2+00.00	25.00'	27.61'	2°03'37"	16°28'51"
2+25.00	25.00'	27.61'	2°03'36"	18°32'27"
2+45.33	20.33'	22.45'	1°40'31"	20°12'58"

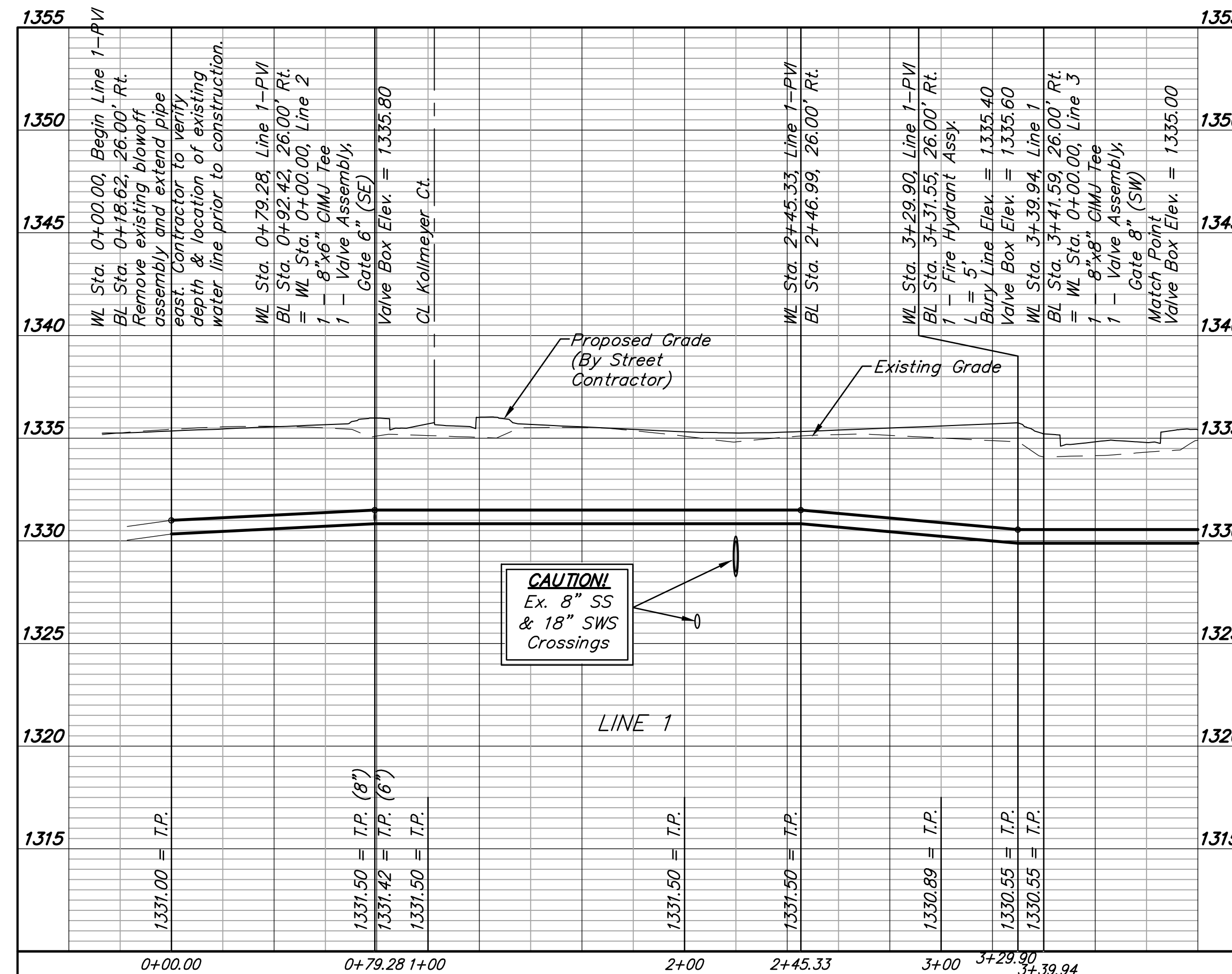
WL Sta. 0+00.00, Begin Line 1
 BL Sta. 0+18.62, 26.00' Rt.
 Remove existing blowoff assembly and extend pipe east. Contractor to verify depth & location of existing water line prior to construction.
 N=33,421.29 E=49,881.92

WL Sta. 0+79.28, Line 1
 BL Sta. 0+92.42, 26.00' Rt.
 = WL Sta. 0+00.00, Line 2
 1 - 8"x6" CIMJ Tee
 1 - Valve Assembly, Gate 6" (SE)
 Valve Box Elev. = 1335.80
 N=33,444.06 E=49,957.71

CAUTION!
 Ex. 8" SS & 18" SWS Crossings

WL Sta. 3+29.90, Line 1
 BL Sta. 3+31.55, 26.00' Rt.
 1 - Fire Hydrant Assy.
 L = 5'
 Bury Line Elev. = 1335.40
 Valve Box Elev. = 1335.60
 N=33,602.42 E=50,148.45

WL Sta. 2+45.33, Line 1-PT
 BL Sta. 2+46.99, 26.00' Rt.
 N=33,539.50 E=50,091.94



DEPTH UNKNOWN.
 Contractor to Verify Depth & Location of Existing Water Line Prior to Construction.

