

Note: Encasement to begin and end at a Bell on Sanitary Sewer Pipe.

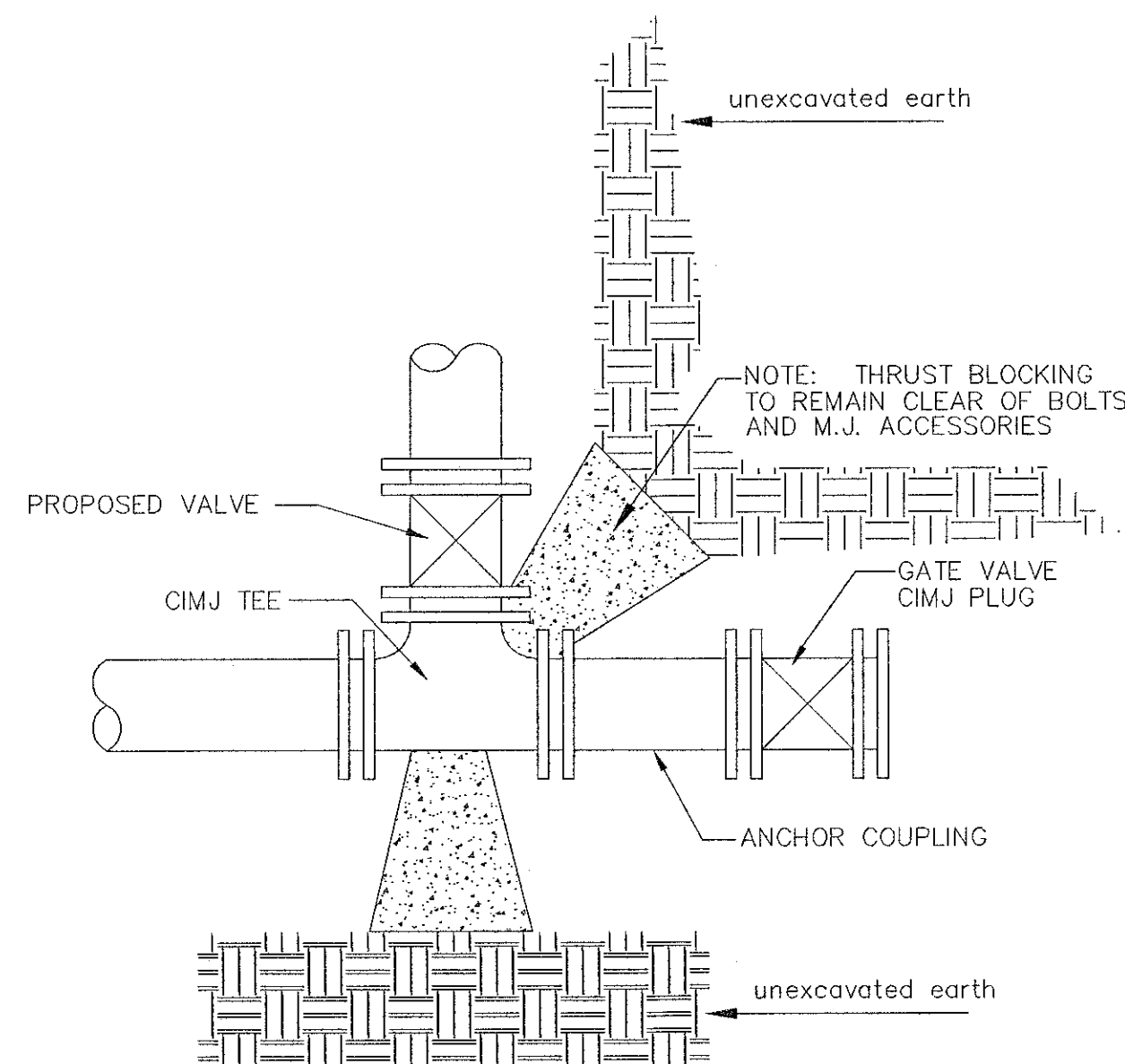
SECTION B-B

TRENCH COMPACTION IN ROAD RIGHT-OF-WAY

REINFORCED CONCRETE ENCASEMENT OF SANITARY SEWER

PIPE SIZE	THRUST AT FITTINGS IN TONS-AT 150#/IN ² P						
	PLUG	90°	45°	22 1/2°	11 1/4°	TEE	
6"	2.8	3.95	2.15	1.09	.55	2.8	
8"	4.9	6.95	3.75	1.90	.96	4.9	
12"	11.4	16.1	8.75	4.45	2.25	11.4	
16"	20.15	28.5	15.4	7.85	3.95	20.15	
20"	31.15	44.0	23.85	12.15	6.10	31.15	
24"	44.55	63.0	34.1	17.4	8.75	44.55	

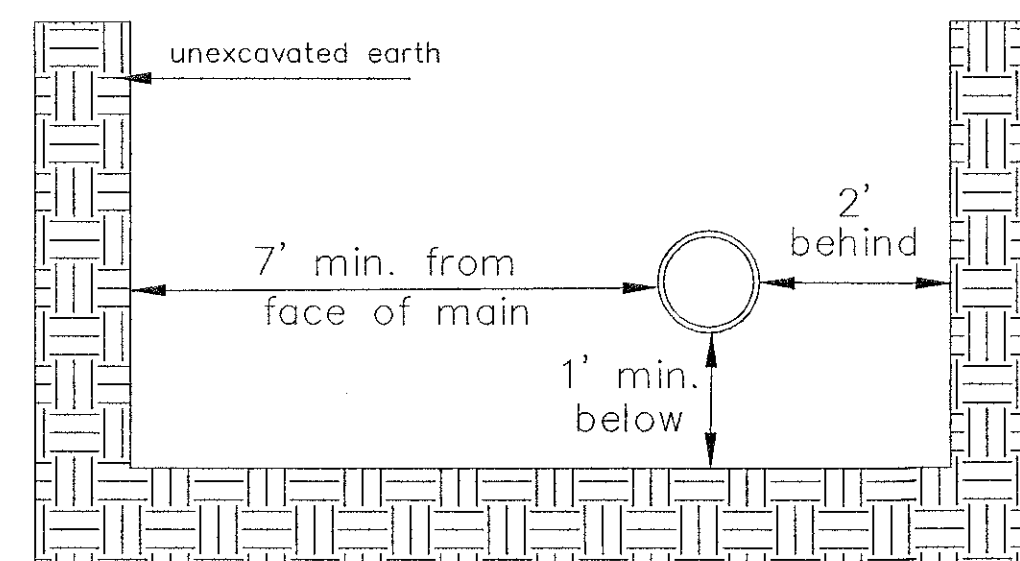
TYPICAL THRUST BLOCKS



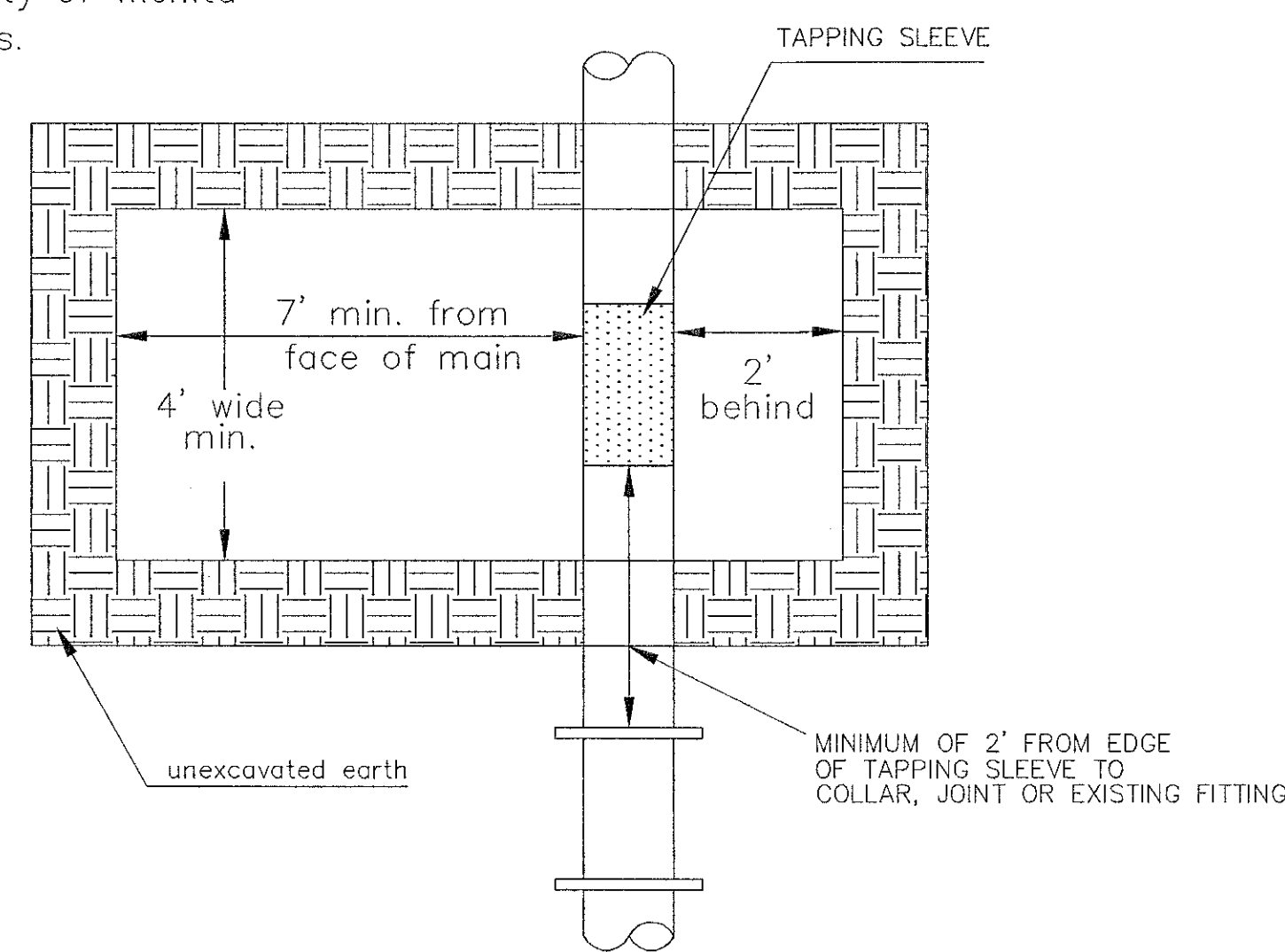
KEY BLOCK DETAIL

* PLANS GOVERN UNLESS OTHERWISE NOTED ON PLANS

SIDE VIEW



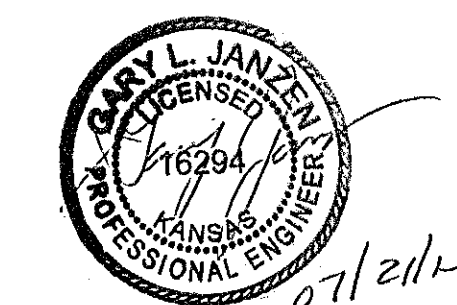
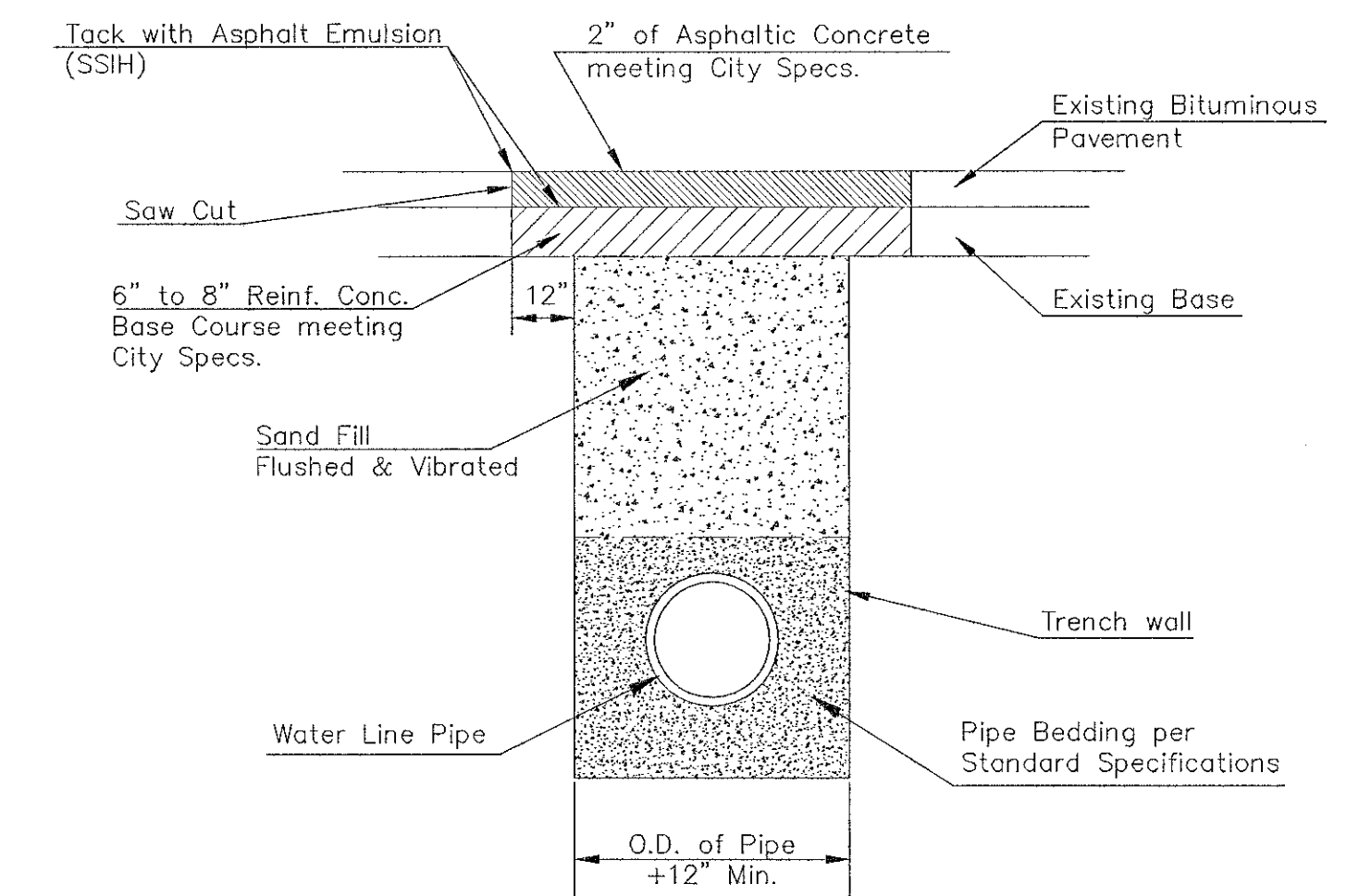
TOP VIEW



EXCAVATION FOR WET TAP

Note: When shoring is required it is to be per The City of Wichita Standard Specifications.

PAVEMENT REPLACEMENT & TRENCH COMPACTION UNDER EXISTING AND PROPOSED CITY ROADS



CITY OF WICHITA
PUBLIC WORKS & UTILITIES ENGINEERING DIVISION

MISCELLANEOUS WATER DETAILS
CITY ENGINEER
GARY JANZEN, P.E.

PROJECT NUMBER	OCA NUMBER	DATE
CITY ENGINEER'S OFFICE CITY HALL - SEVENTH FLOOR 455 NORTH MAIN STREET WICHITA, KANSAS 67202-1620 (316) 268-4501		SHEET 3 of 12

REVISED: JULY 2015