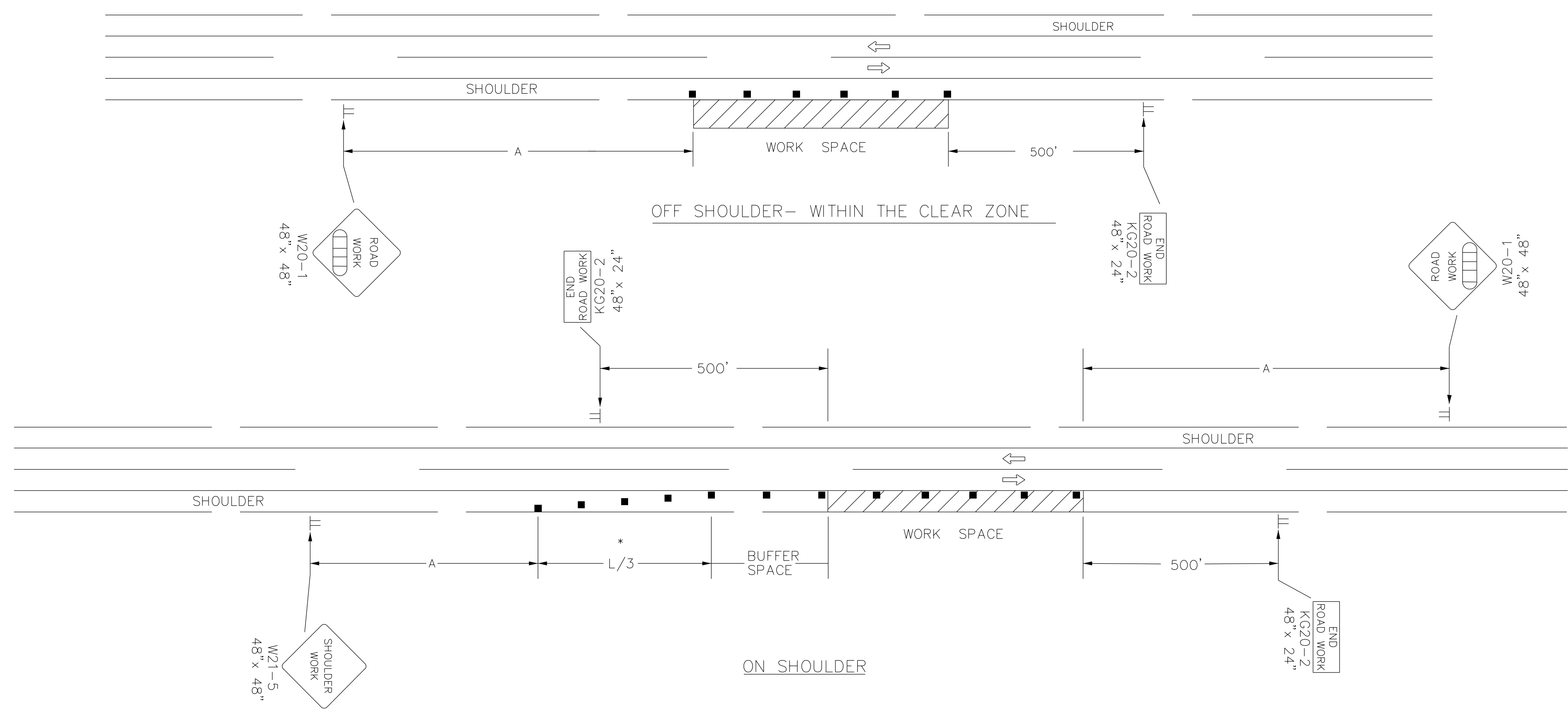


STATE	PROJECT NO.	YEAR	SHEET NO.	TOTAL SHEETS
KANSAS				

DATE	APP'D
DESCRIPTION	MARK

REFER TO STD. TE710 FOR ADDITIONAL INFORMATION ON TEMPORARY TRAFFIC CONTROL SIGNS AND SIGN SPACING.
REFER TO STD. TE702 FOR INFORMATION ON TAPERS AND CHANNELIZING DEVICES.
REFER TO STD. TE700 FOR LENGTH OF BUFFER SPACE.

NOTE:
NO TRAFFIC CONTROL IS REQUIRED IF THE WORK SPACE IS LOCATED OUTSIDE OF THE CLEAR ZONE.
FOR OPERATIONS OF 60 MINUTES OR LESS, ALL SIGNS AND CHANNELIZING DEVICES MAY BE ELIMINATED IF A VEHICLE WITH HIGH-INTENSITY ROTATING, FLASHING, OSCILLATING, OR STROBE LIGHTS IS USED.



WHEN CONCRETE BARRIER SYSTEM IS USED, PORTABLE CHANNELIZING DEVICES ARE NOT NEEDED ALONG THE TANGENT BARRIER SECTION. DELINEATION ON THE BARRIER SYSTEM IS STILL REQUIRED. SEE RD622.

* OMIT TAPER IF PAVED SHOULDER IS LESS THAN 8' WIDE.

■ Channelizing Device
□□□□ AHEAD, 1500 FT, OR 1 MILE

NO.	DATE	REVISIONS	BY	APP'D
3	8-8-07	G20-2 CHANGED TO KG20-2	M.B.	A.A.A.
2	12-29-05	UPDATED END ROAD WORK SIGN DESIGNATION	M.B.	A.A.A.
1	11-19-03	CHANGED BORDER	B.H.	S.A.B.

DESIGNED BY: Larry Sample, PE	DATE: 08-13-2012
DWN BY: RES	CKD BY: LBK
APP BY: L. SAMPLE	TRACED
FILE NAME: 24_TRAFFIC CONTROL DETAILS AND NOTES.dgn	
AMEC PROJ. NO. 5-6150-0001	
TRAFFIC CONTROL DETAILS AND NOTES	
C-4.04	
SHEET 24 OF 24	

amec
AMEC Earth & Environmental, Inc.
1129 SW Wensmaker
Topeka, Kansas 66604
Phone: (785) 272-6830
Fax: (785) 272-6878



UPPER LEVEL "C" TOE DRAIN INSTALLATION
WICHITA-VALLEY CENTER LOCAL
FLOOD PROTECTION PROJECT
WICHITA, KANSAS
PREPARED FOR
THE CITY OF WICHITA, KANSAS
465 N. Main
Wichita, KS 67202

