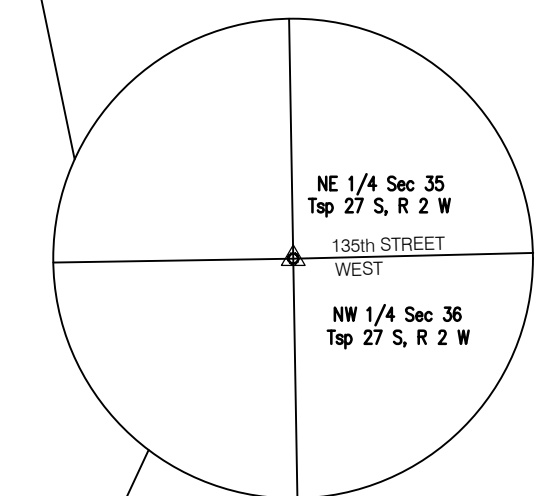


B.L. Sta. 10+00.00, 135th Street West
SE Corner, NW 1/4, Sec 36
Township 27 South, Range 2 W
N= 1674472.80, E= 1602209.73



CP #101 - #4 Rebar w/ Baughman Cap
BL Sta. 22+73.21, 60.21' Rt.
N-1675746.618
E-1602255.277

CP #102 - #4 Rebar w/ Baughman Cap
BL Sta. 31+91.70, 75.03' Rt.
N-1676665.211
E-1602259.524

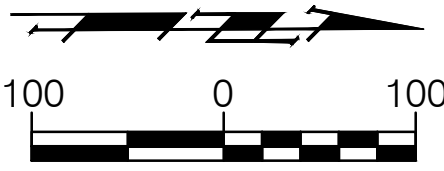
CP #103 - Chiseled "X" Cut into the Flow Line
BL Sta. 531+39.69, 16.01' Lt.
N-1676967.011
E-1602802.336

CP #104 - Chiseled "X" Cut into the Flow Line
BL Sta. 543+91.41, 22.94' Lt.
N-1677007.877
E-1604053.402

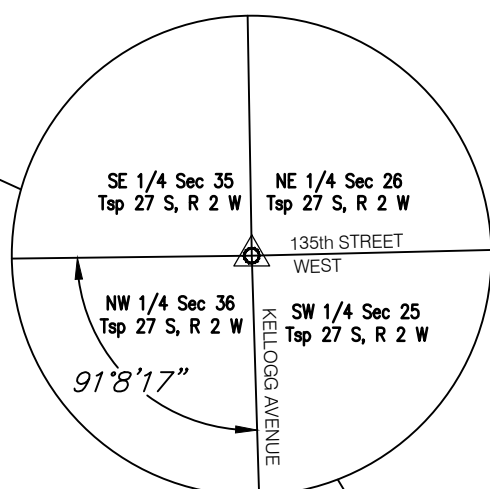
CP #105 - Chiseled "X" Cut into the Sidewalk
BL Sta. 557+38.57, 7.65' Rt.
N-1677013.822
E-1605400.898

CP #106 - Chiseled "X" Cut into the Top of the Curb
BL Sta. 568+87.56, 17.12' Lt.
N= 1676934.15, E= 1602181.40

B.L. Sta. 34+61.52, 135th Street West =
B.L. Sta. 525+18.09, South Frontage Road
N= 1676934.15, E= 1602181.40



B.L. Sta. 36+45.25, 135th Street West
NW Corner, NW 1/4, Sec 36
Township 27 South, Range 2 W
N= 1677177.87, E= 1602179.28



BM #1 - Chiseled "X" in Square Cut on the Top
of the First Inlet North of the South
Drive to the Cornejo Plant
BL Sta. 19+86.34, 24.20' Lt.
Elev = 1367.13 (NAVD 88)

BM #2 - Chiseled "X" in Square Cut on the Top
of the First Inlet North of the North
Drive to the Cornejo Plant
BL Sta. 23+30.74, 21.74' Lt.
Elev = 1369.29 (NAVD 88)

BM #3 - Chiseled "X" on the Concrete Base of
the First Transmission Line Pole South
of the South Kellogg Frontage Road
BL Sta. 30+54.47, 96.63' Lt.
Elev = 1373.82 (NAVD 88)

BM #4 - V-Notch Cut into the Top of the North
Curb of the South Frontage Road
BL Sta. 528+20.90, 119.71' Rt.
Elev = 1365.50 (NAVD 88)

BM #5 - Chiseled "X" Cut into the Flow Line of the
North Curb of the South Frontage Road
BL Sta. 531+39.69, 16.01' Lt.
Elev = 1355.28 (NAVD 88)

BM #6 - Chiseled "X" Cut into the Flow Line of the
North Curb of the South Frontage Road
BL Sta. 537+98.27, 23.61' Lt.
Elev = 1336.70 (NAVD 88)

BM #7 - Chiseled "X" Cut into the Flow Line of the
North Curb of the South Frontage Road
BL Sta. 543+91.41, 22.94' Lt.
Elev = 1329.74 (NAVD 88)

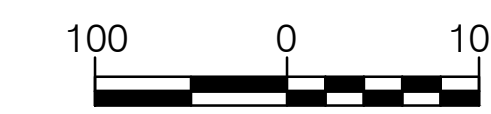
BM #8 - Chiseled "X" Cut into the Flow Line of the
North Curb of the South Frontage Road
BL Sta. 550+93.31, 23.41' Lt.
Elev = 1327.47 (NAVD 88)

BM #9 - Chiseled "X" Cut into the Sidewalk on the
Southeast Corner of the South Frontage
Road Bridge
BL Sta. 557+38.57, 7.65' Rt.
Elev = 1328.54 (NAVD 88)

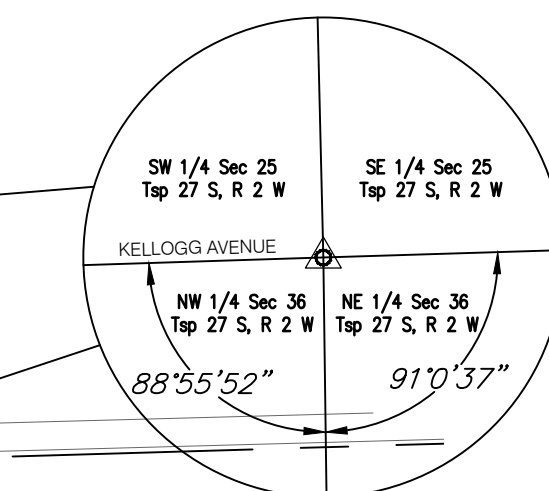
BM #10 - Chiseled "X" Cut into the Top of the North
Curb of the South Frontage Road
BL Sta. 562+71.33, 24.58' Lt.
Elev = 1327.66 (NAVD 88)

BM #11 - Chiseled "X" Cut into the Top of the North
Curb of the South Frontage Road
BL Sta. 568+87.56, 17.12' Lt.
Elev = 1334.92 (NAVD 88)

BM #12 - Chiseled "X" Cut into the Top of the First
Inlet East of 119th Street West on the
North Side of the South Frontage Road.
BL Sta. 574+40.88, 238.21' Rt.
Elev = 1333.01 (NAVD 88)



NE Corner, NW 1/4, Sec 36
Township 27 South, Range 2 W
N= 1677177.87, E= 1602179.28



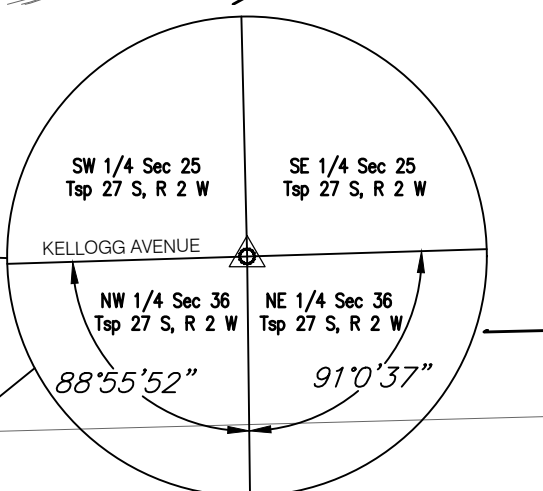
135th STREET WEST
17+00 18+00 19+00 20+00 21+00 22+00 23+00 24+00 25+00 26+00 27+00 28+00 29+00 30+00 31+00 32+00 33+00 34+00 35+00 36+00 36+45

US-54 HIGHWAY (KELLOGG)

South Kellogg Frontage Road

135th STREET WEST
34+00 35+00 36+00 36+45

NE Corner, NW 1/4, Sec 36
Township 27 South, Range 2 W
N= 1677177.87, E= 1602179.28

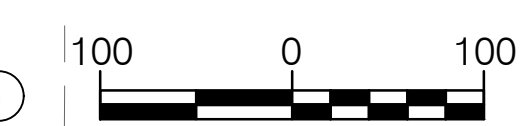


US-54 HIGHWAY (KELLOGG)

South Kellogg Frontage Road

550+00 551+00 552+00 553+00 554+00 555+00 556+00 557+00 558+00 559+00 560+00 561+00 562+00 563+00 564+00 565+00 566+00 567+00 568+00 569+00 570+00 571+00 572+00 573+00 574+00 575+00 576+00 577+00 578+00 579+00 580+00

B.L. Sta. 577+37.46, South Frontage Road
N= 1677086.66, E= 1607398.33



CURVE NO.	P.C. COORDINATES		P.I. COORDINATES		P.T. COORDINATES		C.C. COORDINATES	
	NORTH	EAST	NORTH	EAST	NORTH	EAST	NORTH	EAST
C102	1677224.5456	1606005.9751	1677227.0139	1606096.8127	1677234.9757	1606187.3345	1680223.4386	1605924.4859
C103	1677234.9757	1606187.3345	1677242.9375	1606277.8562	1677245.4058	1606368.6938	1674246.5128	1606450.1830

CURVE DATA:
P.I. Sta. 564+34.19 Bk. = P.I. Sta. 564+34.14 Ahd.
Δ = 03°28'12" Rt. L = 181.69'
R = 3,000.00 E = 1.38'
T = 90.87'

CURVE DATA:
P.I. Sta. 562+52.50 Bk. = P.I. Sta. 562+52.45 Ahd.
Δ = 03°28'12" Lt. L = 181.69'
R = 3,000.00 E = 1.38'
T = 90.87'

Drawing File: E:\Projects\Kellogg Water-135th to 119th\Civil 3D\Basc.dwg [Keyboard]
Design: SRS
Drawn: STAFF
Approved: SRS
Scale: NOTED
Project No: 16-04-E437
CAPITAL IMPROVEMENT PROJECT
KEYSHEET
WEST KELLOGG WATER MAIN EXTENSION

