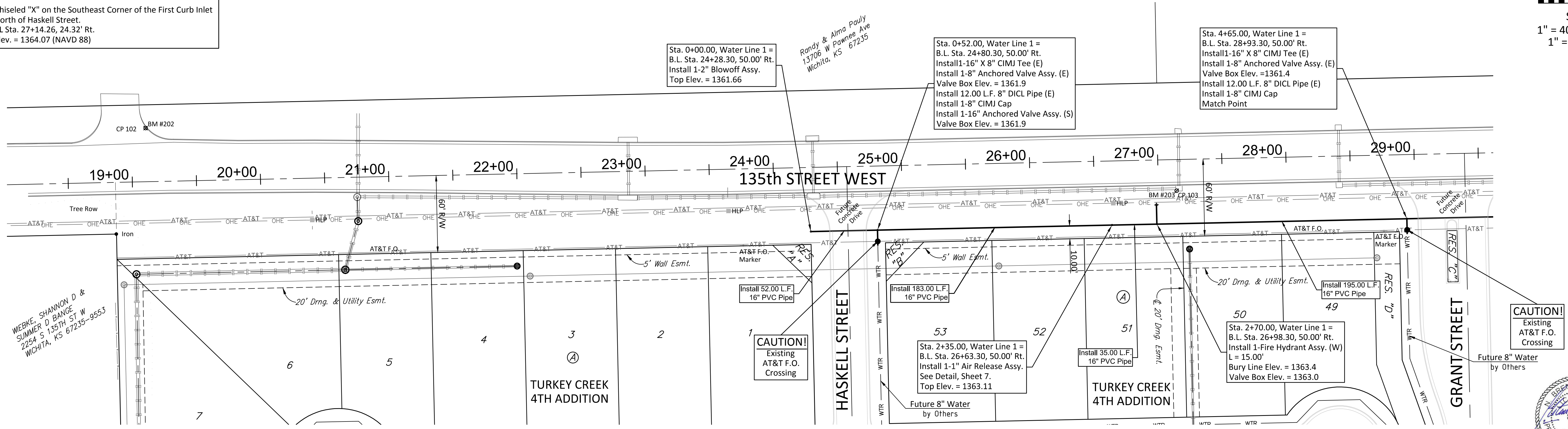
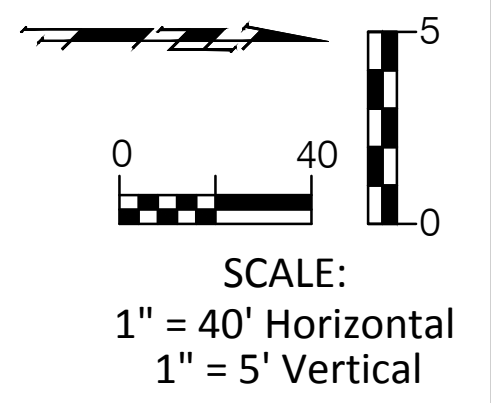


BENCHMARKS

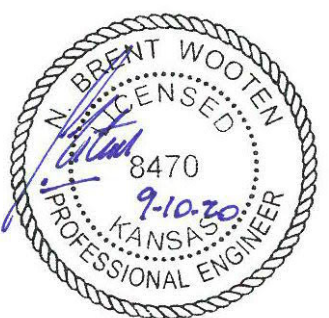
BM #202 - Chiseled "X" in the Middle of the North Curb Return of the First Concrete Drive North of the Pawnee Avenue.
 B.L. Sta. 19+11.23, 41.83' Lt.
 Elev. = 1362.56 (NAVD 88)

BM #203 - Chiseled "X" on the Southeast Corner of the First Curb Inlet North of Haskell Street.
 B.L. Sta. 27+14.26, 24.32' Rt.
 Elev. = 1364.07 (NAVD 88)

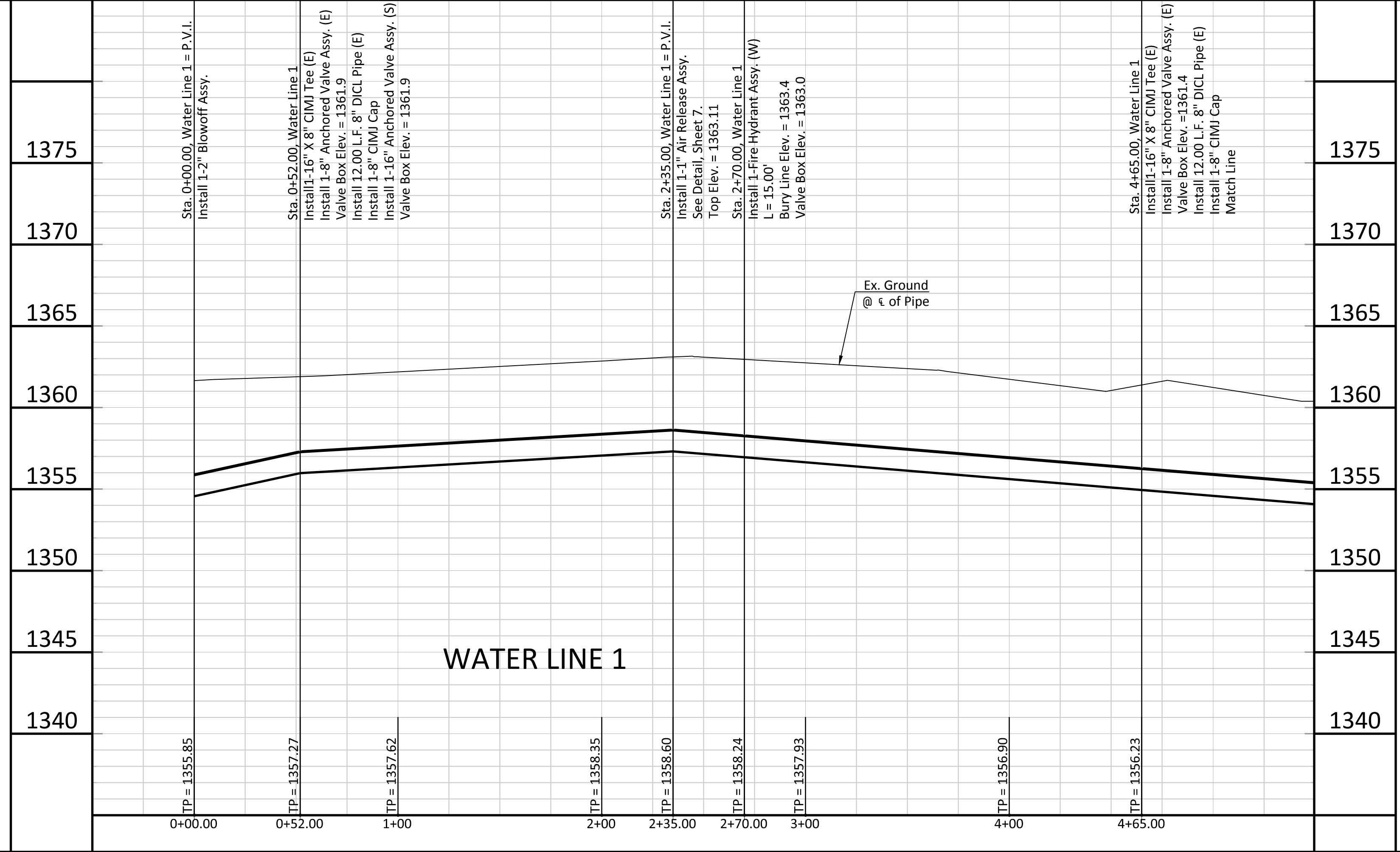


WIEBKE, SHANNON D &
 SUMNER D BANCE
 2254 S 135TH ST W
 WICHITA, KS 67235-9553

CAUTION!
 Existing
 AT&T F.O.
 Crossing



WATER LINE 1



BAUGHMAN COMPANY
 315 Ellis St. Wichita, KS 67211 316-262-7271
 baughmanco.com

BAUGHMAN

CAPITAL IMPROVEMENT PROJECT
135th STREET WEST WATER LINE
 Sta. 0+00.00 - Sta. 4+65.00

PROJECT NUMBER: 448-90892
 INTERNAL NUMBER: 18-03-E952
 DESIGN: NBW
 DRAWN: NBW
 DATE: Sept 2020
 SHEET 3 OF 14