

MATCHLINE STA. 18+00 SEE SHEET 3

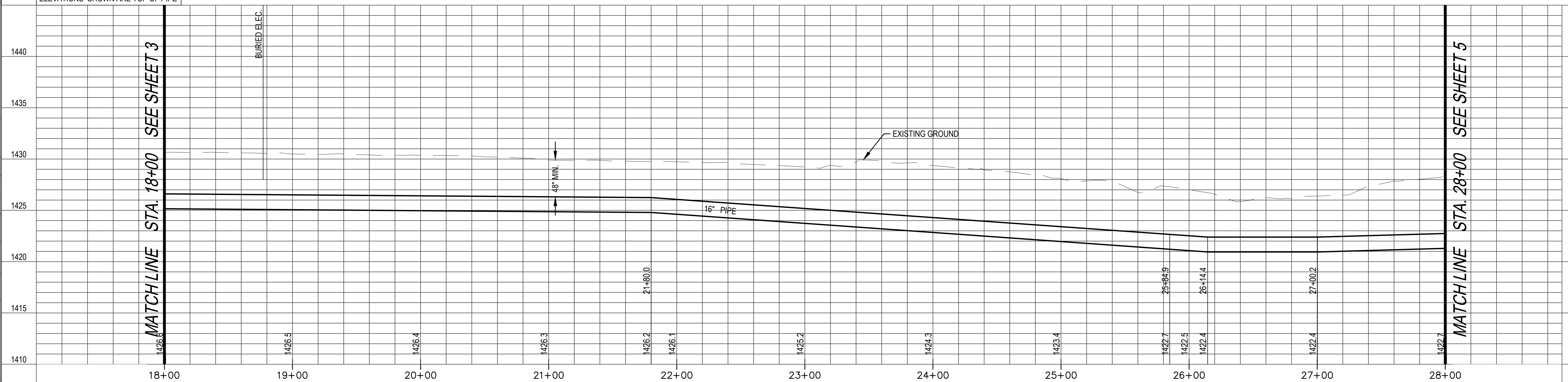
MATCHLINE STA. 28+00 SEE SHEET 5

* PRIOR TO BEGINNING CONSTRUCTION, THE CONTRACTOR SHALL EXCAVATE THE EXISTING WATERLINE TO VERIFY PIPE SIZE, TYPE, FITTINGS, & HORIZONTAL & VERTICAL LOCATION. THE CONTRACTOR SHALL REPORT HIS FINDINGS TO THE ENGINEER SO THAT ANY NECESSARY PLAN MODIFICATIONS MAY BE MADE. ANY ADDITIONAL LABOR OR MATERIALS NECESSARY TO COMPLETE THE CONNECTION SHALL BE CONSIDERED SUBSIDIARY TO THE PROJECT.

⊕ DENOTES DITCH CHECK
SEE DETAIL, SHEET 12

UNLESS NOTED OTHERWISE,
ELEVATIONS SHOWN ARE TOP OF PIPE

MR4 SPUR LINE

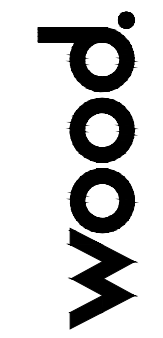


MATCHLINE STA. 18+00 SEE SHEET 3

MATCHLINE STA. 28+00 SEE SHEET 5

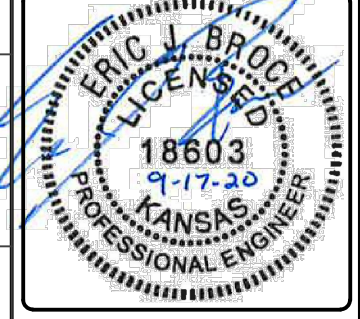
REVISIONS:

Environment & Infrastructure Solutions, Inc.
245 N. WACO AVENUE, SUITE 110
WICHITA, KANSAS 67202
PHONE: 316-448-2711
FAX: 316-448-2711



MR4 SPUR LINE (2)
EQUUS WELLFIELD SPURLINE REPLACEMENTS - MR4
GARY JANZEN, P.E. - CITY ENGINEER
CITY OF WICHITA

DESIGNED BY: EJB
DRAWN BY: JAN
CHECKED BY: ---
DATE: September 17, 2020



PROJECT NO.
639020

SHEET NO.
4
OF 10

Last Saved by: alex.mckeen Plotted By: Mckeen, Alex Plot Date/Time: 9/17/2020 4:53 PM
File: L:\8275000373_wichita_spurline_05_CAD\Sheets\bid_package\1_MR4-2.dwg