

BENCHMARKS:
 135th St. W. & Pawnee
 City of Wichita Benchmark Disc,
 Northeast Corner of Intersection
 On SW Corner of Concrete Base
 of High Line Pole.
 Elev. = 1359.65 NGVD29

City of Wichita Benchmark Disc,
 0.4 Mi. South of Kellogg On
 135th St. W., West Side of
 Concrete Base for High Line
 Pole, West of K.G.&E.
 Substation, 135± South of
 Railroad Tracks On East Side of
 135th St. W.
 Elev. = 1367.77 NGVD29

WL Sta. 0+12.00, Begin Line 1
 BL Sta. 0+62.00, 23.00' Lt.
 Remove Cap from Proposed
 8" Water Line (by "Others")
 and Extend 8" Pipe East.
 Contractor to Verify
 Depth & Location of Prop. 8"
 Water Line Prior to Construction.

CAUTION!
 U/G AT&T
 Fiber Optic
 Crossing

Prop. 8" Water Line (by "Others")
 WL Sta. 0+00, Line 1
 BL Sta. 0+50.00, 23.00' Lt.
 Existing 8" Valve (E)

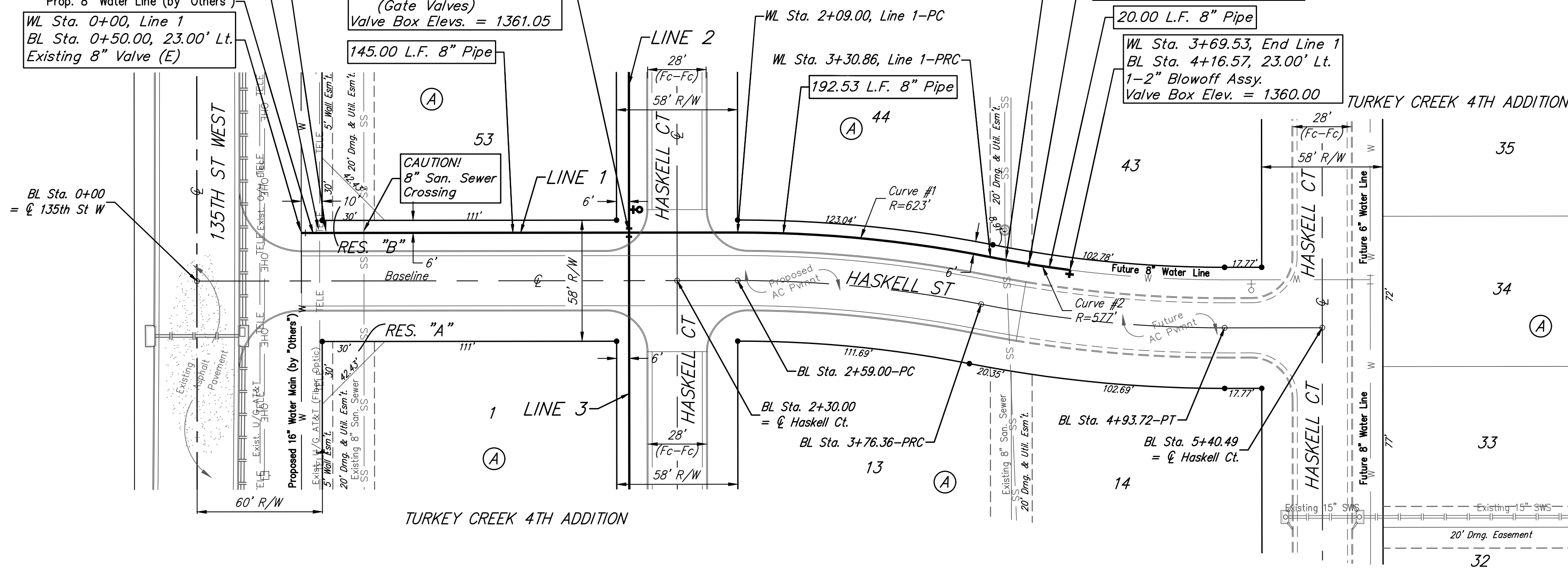
WL Sta. 1+57.00, Line 1 =
 WL Sta. 0+00, Line 2
 BL Sta. 2+07.00, 23.00' Lt.
 1 - 8"x8" CIMJ Cross
 2 - 8" Valve Assy's. (N&S)
 (Gate Valves)
 Valve Box Elev. = 1361.05

CAUTION!
 8" San. Sewer
 Crossing

CAUTION!
 8" San. Sewer
 Crossing

WL Sta. 3+49.53, Line 1
 BL Sta. 3+95.77, 23.00' Lt.
 1 - 8" Anch. Valve Assy.
 (Special)
 Valve Box Elev. = 1360.10

WL Sta. 3+69.53, End Line 1
 BL Sta. 4+16.57, 23.00' Lt.
 1-2" Blowoff Assy.
 Valve Box Elev. = 1360.00



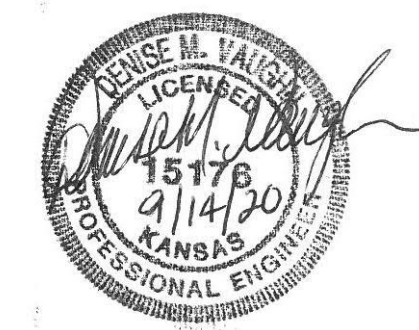
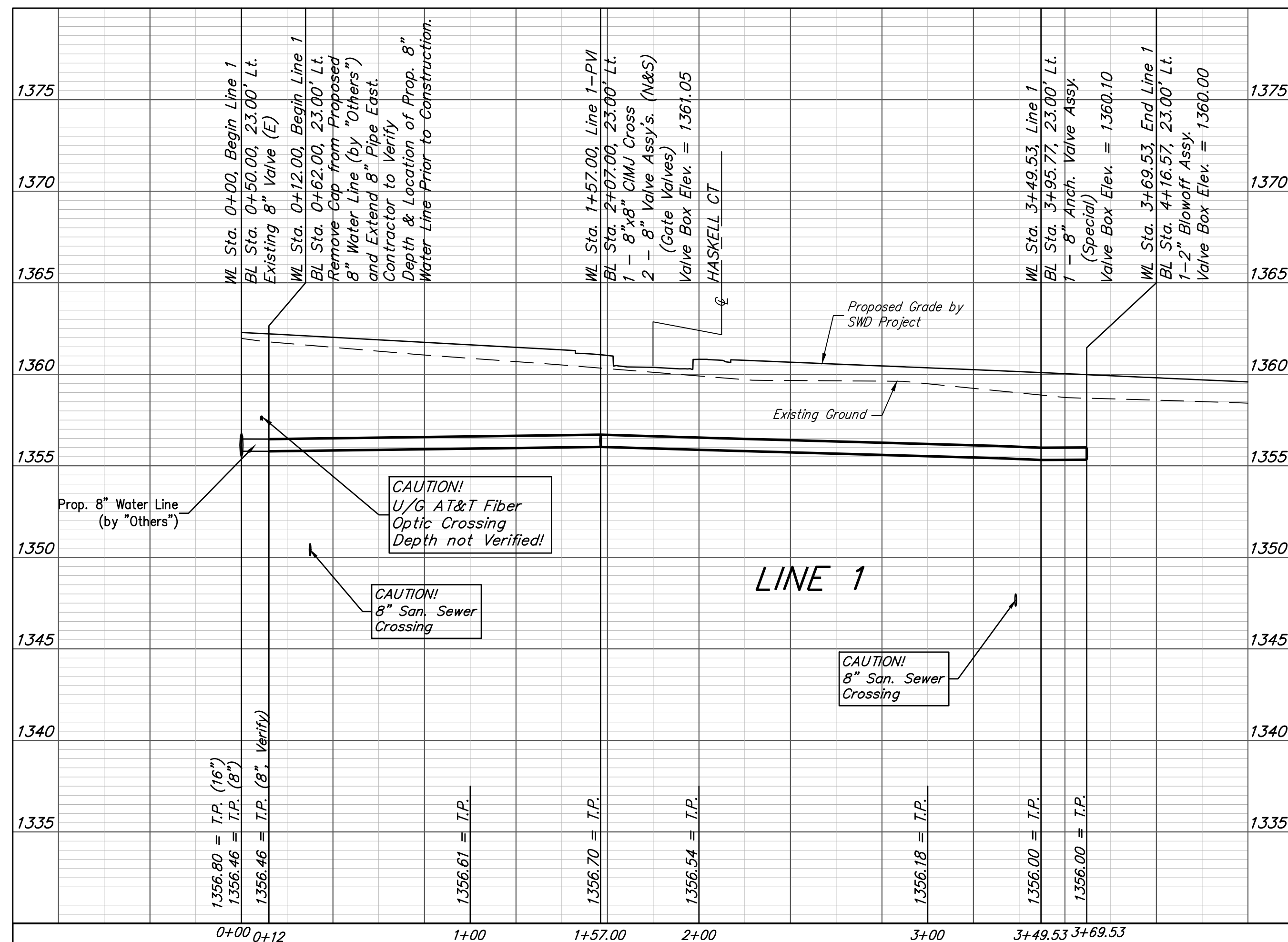
Curve #1
 Curve Data Based on Centerline
 Rad. = 623' Delta = 111°26' Tangent = 61.13'
 Arc = 121.86' L.C. = 121.67' Def./Ft. = 2.75904 Min.

Station	Arc	Chord 8' Left	Defl.	Total Defl.
2+09.00	-	-	0'00"00"	0'00"00"
2+25.00	16.00'	16.21'	0'44"09"	0'44"09"
2+50.00	25.00'	25.32'	1'08"58"	1'53'07"
2+75.00	25.00'	25.32'	1'08"58"	3'02'06"
3+00.00	25.00'	25.32'	1'08"58"	4'11'04"
3+25.00	25.00'	25.32'	1'08"58"	5'20'03"
3+30.86	5.86'	5.94'	0'16"10"	5'36'13"

Curve #2
 Curve Data Based on Centerline
 Rad. = 577' Delta = 3°50'22" Tangent = 19.34'
 Arc = 38.67' L.C. = 38.66' Def./Ft. = 2.97862 Min.

Station	Arc	Chord 8' Left	Defl.	Total Defl.
3+30.86	-	-	0'00"00"	0'00"00"
3+49.53	18.67'	18.41'	0'55"37"	0'55"37"
3+69.53	20.00'	19.72'	0'59"34"	1'55"11"

Baseline =
 ☉ Haskell ST



Baughman Turkey Creek 4th Addition - Phase 1A
LINE 1
 Water Distribution System

Baughman Company, P.A. 315 Ellis St. Wichita, KS 67211 P 316-262-7271 F 316-262-0149
 ENGINEERING | SURVEYING | PLANNING | LANDSCAPE ARCHITECTURE

PROJECT NUMBER 448-2020-016821	DESIGN DMV	DRAWN JAK
REVISIONS:	APPROVED	DATE 9/10/2020
	SCALE Noted	SHEET 4 OF 15

E:\Projects\Turkey Creek 4th_Engineering\Phase 1A\Wtr_2020-01-04\WTR_PLANS.dwg