

**BENCHMARKS:**  
 135th St. W. & Pawnee  
 City of Wichita Benchmark Disc,  
 Northeast Corner of Intersection  
 On SW Corner of Concrete Base  
 of High Line Pole.  
 Elev. = 1359.65 NGVD29

City of Wichita Benchmark Disc,  
 0.4 Mi. South of Kellogg On  
 135th St. W., West Side of  
 Concrete Base for High Line  
 Pole, West of K.G.&E.  
 Substation, 135± South of  
 Railroad Tracks On East Side of  
 135th St. W.  
 Elev. = 1367.77 NGVD29

WL Sta. 0+12.00, Begin Line 1  
 BL Sta. 0+62.00, 25.00' Lt.  
 Remove Cap from Proposed  
 8" Water Line (by "Others")  
 and Extend 8" Pipe East.  
 Contractor to Verify Depth  
 & Location of Prop. 8" Water  
 Line Prior to Construction.

Prop. 8" Water Line (by "Others")  
 WL Sta. 0+00, Line 1  
 BL Sta. 0+50.00, 25.00' Lt.  
 Existing 8" Valve (E)

BL Sta. 0+00  
 = & 135th ST W

WL Sta. 1+48.69, Line 1  
 BL Sta. 1+98.69, 25.00' Lt.  
 1 - 8"x8" CIMJ Tee  
 1 - 8" Anch. Valve Assy. (S)  
 (Gate Valve)  
 Valve Box Elev. = 1363.45

WL Sta. 2+98.86, Line 1  
 BL Sta. 3+48.86, 25.00' Lt.  
 1-8" CIMJ 45° Bend (Vert.)

WL Sta. 2+96.02, Line 1  
 BL Sta. 3+46.02, 25.00' Lt.  
 1-8" CIMJ 45° Bend (Vert.)

WL Sta. 4+09.79, Line 1  
 BL Sta. 4+55.82, 25.00' Lt.  
 1-Fire Hydrant Assembly  
 (L = 5')  
 Bury Line Elev. = 1358.60  
 Valve Box Elev. = 1358.70

WL Sta. 4+67.89, Line 1  
 BL Sta. 5+02.30, 25.00' Lt.  
 1-8" CIMJ 45° Bend

WL Sta. 4+77.89, Line 1  
 BL Sta. 5+02.30, 25.00' Lt.  
 1-8" CIMJ 45° Bend

WL Sta. 4+80.96, Line 1  
 BL Sta. 5+09.05, 14.73' Lt.  
 1-8" CIMJ 45° Bend (Vert.)

WL Sta. 4+85.85, Line 1  
 BL Sta. 5+11.89, 11.04' Lt.  
 1-8" CIMJ 45° Bend (Vert.)

WL Sta. 4+85.85, Line 1  
 BL Sta. 5+25.67, 2.95' Rt.  
 1-8" CIMJ 45° Bend (Vert.)

WL Sta. 5+05.85, Line 1  
 BL Sta. 5+25.67, 2.95' Rt.  
 1-8" CIMJ 45° Bend (Vert.)

WL Sta. 5+10.73, Line 1  
 BL Sta. 5+29.64, 6.04' Rt.  
 1-8" CIMJ 45° Bend (Vert.)

WL Sta. 5+88.23, Line 1  
 BL Sta. 6+35.63, 26.00' Rt.  
 1-2" Blowoff Assy.  
 Valve Box Elev. = 1358.60

WL Sta. 6+08.23, End Line 1  
 BL Sta. 6+35.63, 26.00' Rt.  
 1-2" Blowoff Assy.  
 Valve Box Elev. = 1358.70

WL Sta. 4+19.74, Line 1  
 BL Sta. 4+63.78, 25.00' Lt.  
 1 - 8"x8" CIMJ Tee

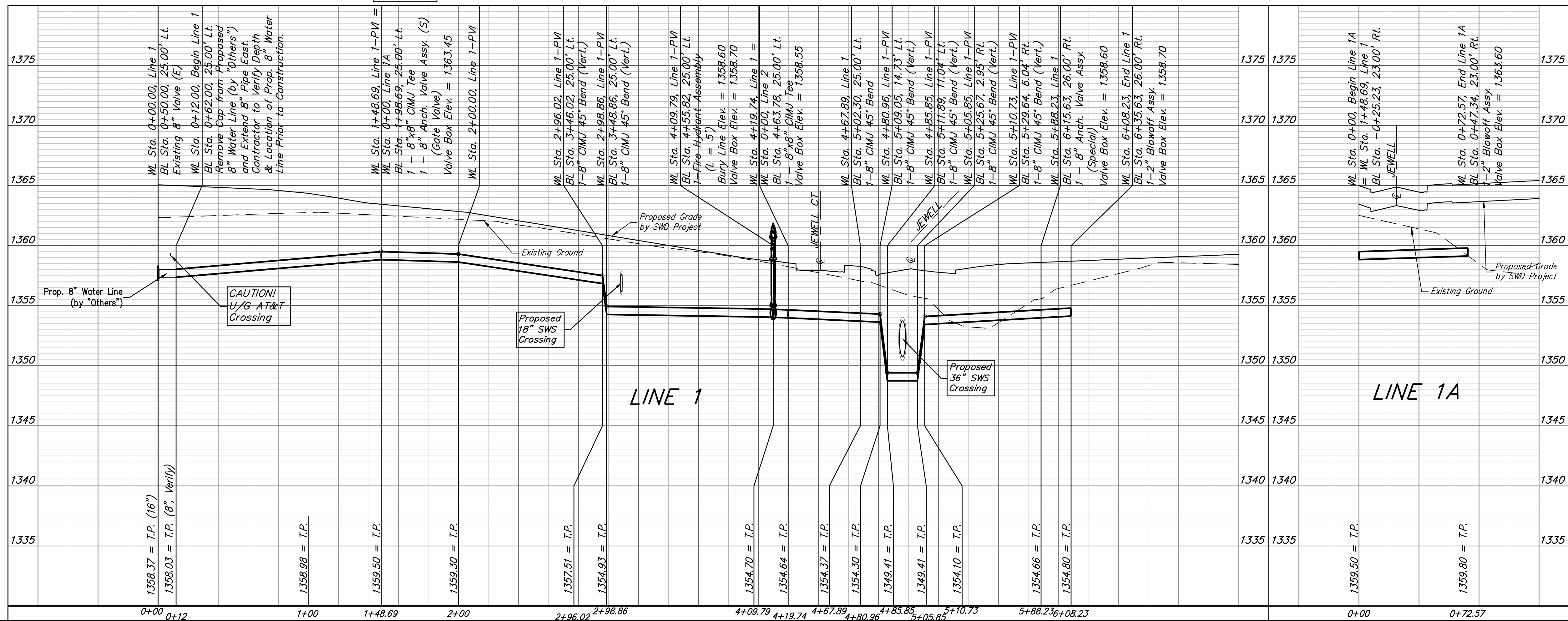
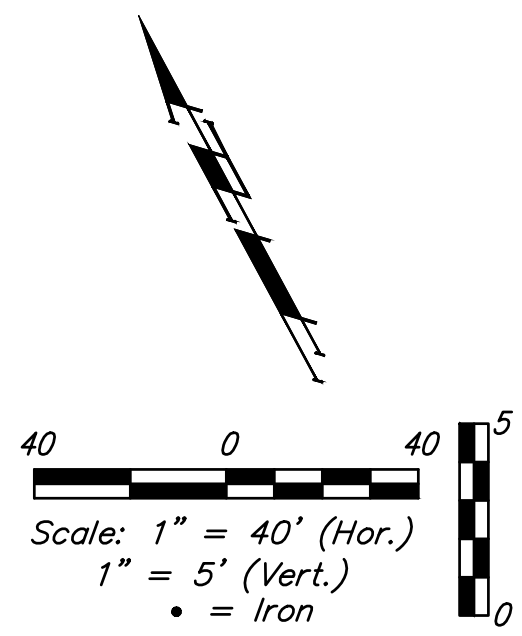
WL Sta. 5+88.23, Line 1  
 BL Sta. 6+15.63, 26.00' Rt.  
 1 - 8" Anch. Valve Assy.  
 (Special)  
 Valve Box Elev. = 1358.60

Baseline #1 = & Jewell  
 Baseline #2 = & Jewell Ct.

Curve #1  
 Curve Data Based on Centerline  
 Rad. = 125' Delta = 35°43'33" Tangent = 40.28'  
 Arc = 78.94' L.C. = 76.69' Def./Ft. = 13.57708 Min.

Station	Arc	Chord		Defl.	Total Defl.
		8' Left	8' Right		
3+89.95	-	-	-	0'00'00"	0'00'00"
4+00.00	10.05'	10.56'	9.29'	2'16'27"	2'16'27"
4+19.05	19.05'	19.99'	17.59'	4'18'39"	6'35'06"
4+25.00	5.95'	6.25'	5.50'	1'20'47"	7'55'53"
4+50.00	25.00'	26.22'	23.07'	5'39'25"	13'35'18"
4+68.89	18.89'	19.83'	17.44'	4'16'29"	17'51'47"

For Radii Under 200'  
 Contractor to Use  
 Short Pipe Lengths



**Baughman** Turkey Creek 4th Addition - Phase II  
**LINE 1**  
 Water Distribution System

Baughman Company, P.A. 315 Ellis St. Wichita, KS 67211 P 316-262-7271 F 316-262-0149  
 ENGINEERING | SURVEYING | PLANNING | LANDSCAPE ARCHITECTURE

PROJECT NUMBER: 448-2020-016826  
 DESIGN: DMV  
 DRAWN: JAK  
 APPROVED: [Signature]  
 DATE: 9/10/2020  
 SCALE: Noted  
 SHEET: 4 OF 15

REVISIONS:

E:\Projects\Turkey Creek 4th Addition\Engineering\Phase 2\Wtr\_2020\016826\WTR\_PLANS.dwg