

IRONS		
Point #	Northing	Easting
1	27408.50	27748.76
2	27406.82	27440.43
3	27407.14	27318.75
4	27407.36	27234.75
5	27409.65	26374.75
6	27409.88	26290.75
14	29940.46	24938.07
23	30550.98	27275.03
24	30602.88	27497.55
25	29998.28	28319.90
26	29736.28	28320.04
27	29626.13	28209.84
28	29289.96	28145.86
29	29255.58	28139.31
30	28876.91	28067.24
31	28584.63	27955.23
32	28301.77	27713.63
33	28138.05	27667.84
34	27990.87	27696.79
35	27849.53	27749.93
36	27487.36	27234.96
37	27487.14	27318.96
38	27536.32	27245.09
39	27536.15	27309.09
40	27731.24	27245.61
41	27731.07	27309.61
42	27807.89	27205.64
43	27860.47	27242.13
44	27838.55	27267.45
45	27783.83	27300.63
46	27971.75	27034.69
47	27993.52	26974.51
48	27932.38	26955.58
49	27912.65	27010.12
50	27826.46	26936.87
51	27826.31	26994.87
52	27618.89	26936.31
53	27618.73	26994.31
54	28044.42	26675.13
55	28043.99	26617.13
56	27979.96	26617.28
57	27980.40	26675.28
58	27619.74	26616.31
59	27619.59	26674.31
60	27489.88	26290.97
61	27489.65	26374.97
62	27538.84	26301.10
63	27538.67	26365.10
64	27872.48	26301.99
65	27872.31	26365.99
66	27905.27	26298.85
67	27917.59	26361.65
68	27923.94	26295.18
69	27936.26	26357.99
70	27946.60	26399.29
71	28008.35	26382.47
72	27974.32	26125.45
73	27910.32	26125.28
74	27974.51	26054.26
75	27974.68	25990.26
76	27910.67	25993.09
77	27910.52	26051.09
78	27621.40	25992.32
79	27621.25	26050.32
80	27910.81	25941.20

IRONS		
Point #	Northing	Easting
81	27974.81	25941.37
88	27895.85	27361.86
99	27841.08	27395.04
100	27947.00	27487.52
101	28002.30	27505.25
102	27994.20	27436.53
103	27999.52	27512.64
104	27945.24	27492.20
105	27845.66	27560.92
106	27845.51	27618.92
107	27618.44	27560.31
108	27618.29	27618.31
109	28288.87	27518.96
110	28271.63	27580.59
111	28491.08	27626.77
112	28449.51	27675.43
113	28566.50	27691.19
114	28524.94	27739.86
115	28614.25	27729.43
116	28666.68	27766.12
117	29014.19	27906.06
118	29002.23	27968.93
119	29341.60	27968.38
120	29329.63	28031.25
121	29483.48	27838.97
122	29547.18	27832.83
123	29614.81	27541.44
124	29664.08	27510.84
125	29769.11	27478.13
126	29777.75	27541.54
127	29833.79	27526.59
128	29962.51	27396.10
129	29902.90	27372.81
130	29945.04	27264.97
131	29989.72	27326.45
132	30010.18	27272.18
133	30018.71	27205.67
134	29954.75	27207.91
135	30012.44	27026.92
136	30010.40	26968.90
137	30005.74	26836.22
138	29941.78	26838.46
139	29995.19	26730.15
140	29983.77	26673.28
141	29901.66	26461.55
142	29845.70	26492.61
143	29812.19	26426.03
144	29872.41	26403.82
145	29849.89	26350.15
146	29854.90	26348.53
147	29787.72	26366.65
148	29779.67	26369.20
149	29798.99	26430.21
172	28682.56	27743.43
173	28630.13	27706.74
174	28670.71	27639.23
175	28727.71	27668.32
176	28794.24	27537.95
177	28820.60	27486.29
178	28830.02	27467.83
179	28773.01	27438.74
180	28816.15	27139.85
181	28811.50	27141.06
182	28795.44	27079.11
183	28801.88	27077.44

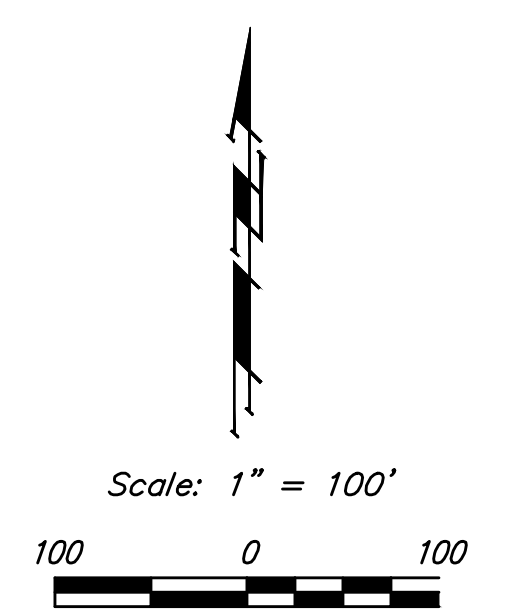
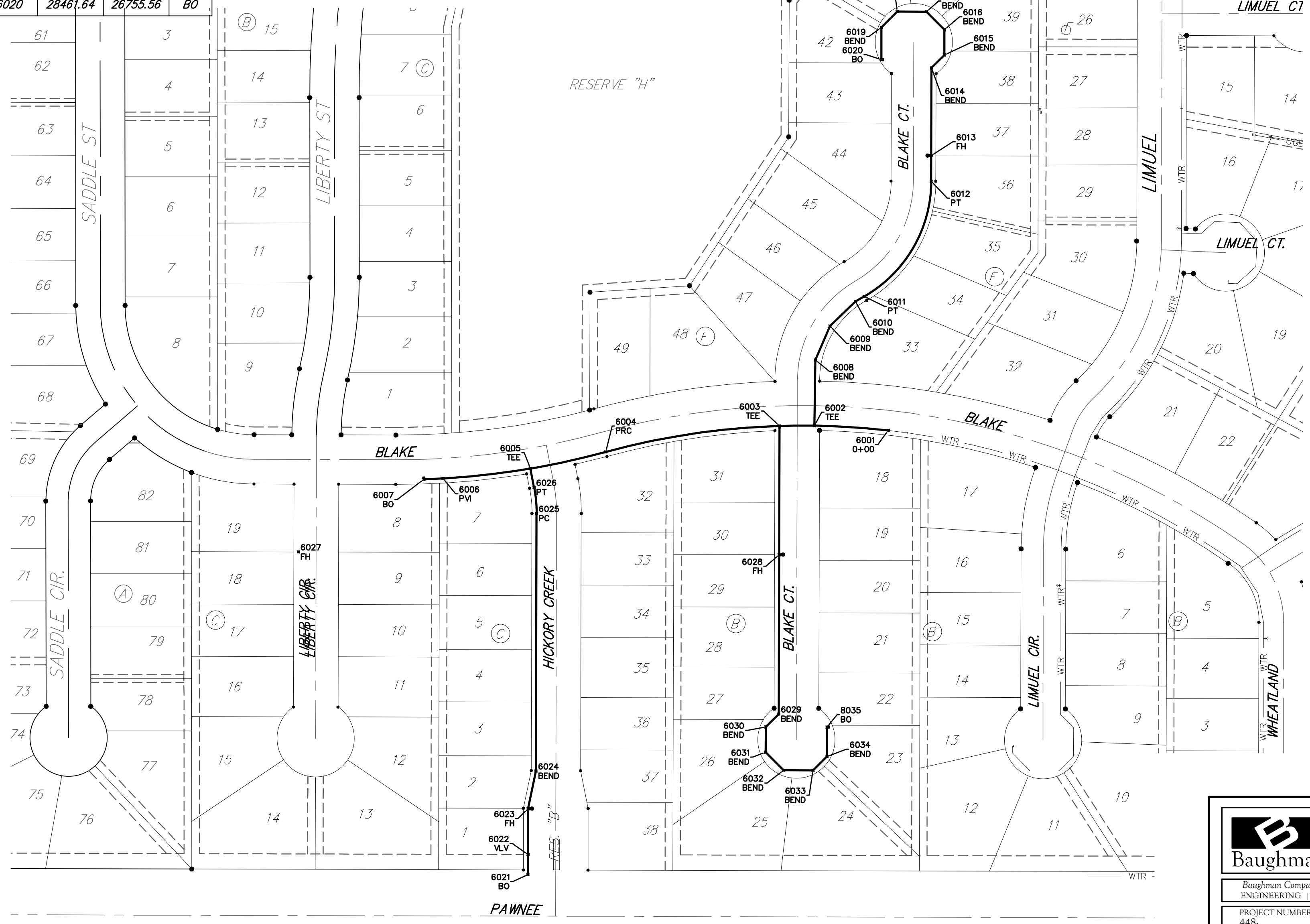
IRONS		
Point #	Northing	Easting
184	28871.14	27092.55
185	28883.51	26740.78
186	28822.84	26720.40
187	28918.61	26573.78
188	28921.58	26509.85
189	28960.37	26511.65
190	28957.39	26575.59
255	28199.15	26706.79
256	28148.68	26735.38
257	28304.10	26768.14
258	28303.95	26826.14
259	28443.54	26768.51
260	28443.38	26826.51
261	28044.78	27008.20
262	27998.16	27052.05
263	28226.23	27086.93
264	28184.46	27148.05
265	28183.92	27160.57
266	28241.87	27163.07
267	28242.39	27150.98
268	28492.93	27151.65
269	28550.93	27151.80
270	28492.63	27264.97
271	28550.63	27265.12
272	28722.89	27088.26
273	28722.72	27152.26
274	28974.39	27564.77
275	28948.02	27616.43
276	29100.40	27607.92
277	29089.56	27664.90
278	29119.78	27611.61
279	29108.93	27668.59
280	29636.22	27465.99
281	29586.95	27496.59
282	29558.73	27357.16
283	29615.24	27371.91
284	29856.96	27702.88
285	29798.96	27702.91
286	29857.19	28149.97
287	29799.17	28100.65
288	29999.04	27330.09
289	30020.15	27276.07
290	30090.08	27289.53
291	30089.62	27347.53
292	30350.68	27291.57
293	30350.23	27349.57
294	30295.97	26971.13
295	30295.52	27029.13
296	30055.49	26658.88
297	30066.91	26715.75
298	30148.83	26649.97
299	30148.38	26707.97
300	30266.87	26650.90
301	30266.41	26708.89
302	29986.68	26328.69
303	29986.23	26386.69
308	29605.20	26380.86
309	29594.18	26443.90
310	29508.17	26435.00
311	29450.18	26435.80
312	29138.16	26467.05
313	29170.97	26522.01
314	29450.55	26462.89
315	29508.55	26462.09
316	29587.30	26654.47

IRONS		
Point #	Northing	Easting
317	29545.39	26694.56
318	29668.95	26848.04
319	29610.99	26850.08
320	29614.10	26938.84
321	29672.07	26936.81

CONTROL POINTS			
Point #	Northing	Easting	Desc.
501	32584.25	24901.96	NWCOR
502	32612.53	27513.28	N1\4COR
503	29999.21	30061.99	E1\4COR
504	27360.78	29997.18	SECOR
505	27353.64	24880.59	SWCOR
506	29939.11	24878.07	W1\4COR
507	29997.85	27492.82	CTR
508	27346.81	27439.22	S1\4COR
600	27336.68	26119.57	R
601	27364.65	28223.19	R
602	29803.90	30075.28	N
603	29939.45	24908.10	AMPA5
604	29338.88	28762.95	ARM5
606	29999.06	30022.07	ARM5
607	29751.25	29799.36	N
702	27442.50	24976.73	CP
707	29164.34	27472.03	CP
710	32566.65	26958.64	CP
718	30423.52	24912.64	AMPA5
801	27376.51	29966.08	PK
803	29899.34	24954.88	CP
804	30073.40	27453.20	CP
810	32566.64	26958.64	CP
811	32473.94	26206.49	4BF
812	30624.50	26190.89	4BF
813	30569.47	26223.82	CP
815	31305.15	27502.90	4BF
816	30731.98	27498.38	4BF
817	30351.39	24911.86	4BF
822	27390.46	30036.25	BMCOW
843	30634.08	24962.62	N
845	27365.81	28315.31	BMCOW

WTR POINTS			
Point #	Northing	Easting	Desc.
6001	27980.33	26764.48	O+00
6002	27986.53	26668.55	TEE
6003	27986.17	26623.29	TEE
6004	27952.39	26397.71	PRC
6005	27930.82	26299.95	TEE
6006	27917.99	26186.68	PM
6007	27916.87	26161.79	BO
6008	28071.81	26669.85	BEND
6009	28115.81	26688.87	BEND
6010	28147.88	26721.92	BEND
6011	28154.37	26733.24	PT
6012	28303.96	26820.14	PT
6013	28336.95	26820.23	FH
6014	28450.95	26820.53	BEND
6015	28467.63	26837.30	BEND
6016	28500.54	26837.39	BEND
6017	28523.87	26814.18	BEND
6018	28523.97	26776.11	BEND
6019	28503.64	26755.67	BEND
6020	28461.64	26755.56	BO

WTR POINTS			
Point #	Northing	Easting	Desc.
6021	27403.86	26296.74	BO
6022	27429.86	26296.84	VLV
6023	27489.25	26296.97	FH
6024	27538.22	26307.10	BEND
6025	27872.46	26307.99	PC
6026	27906.42	26304.73	PT
6027	27822.66	25998.85	FH
6028	27819.01	26622.85	FH
6029	27612.18	26622.29	BEND
6030	27595.49	26605.52	BEND
6031	27562.58	26605.44	BEND
6032	27539.25	26628.64	BEND
6033	27539.15	26666.82	BEND
6034	27557.10	26684.87	BEND



	Turkey Creek 3rd Addition - Phase 6A	
	<b>Coordinate Sheet</b> Water Distribution System	
<small>Baughman Company, P.A. 315 Ellis St. Wichita, KS 67211 P 316-263-7271 F 316-263-0149          ENGINEERING   SURVEYING   PLANNING   LANDSCAPE ARCHITECTURE</small>		
PROJECT NUMBER <b>448</b>	DESIGN DMV	DRAWN JAK
REVISIONS:	APPROVED 	DATE 8/20/2020
SCALE Noted		SHEET <b>15 OF 16</b>