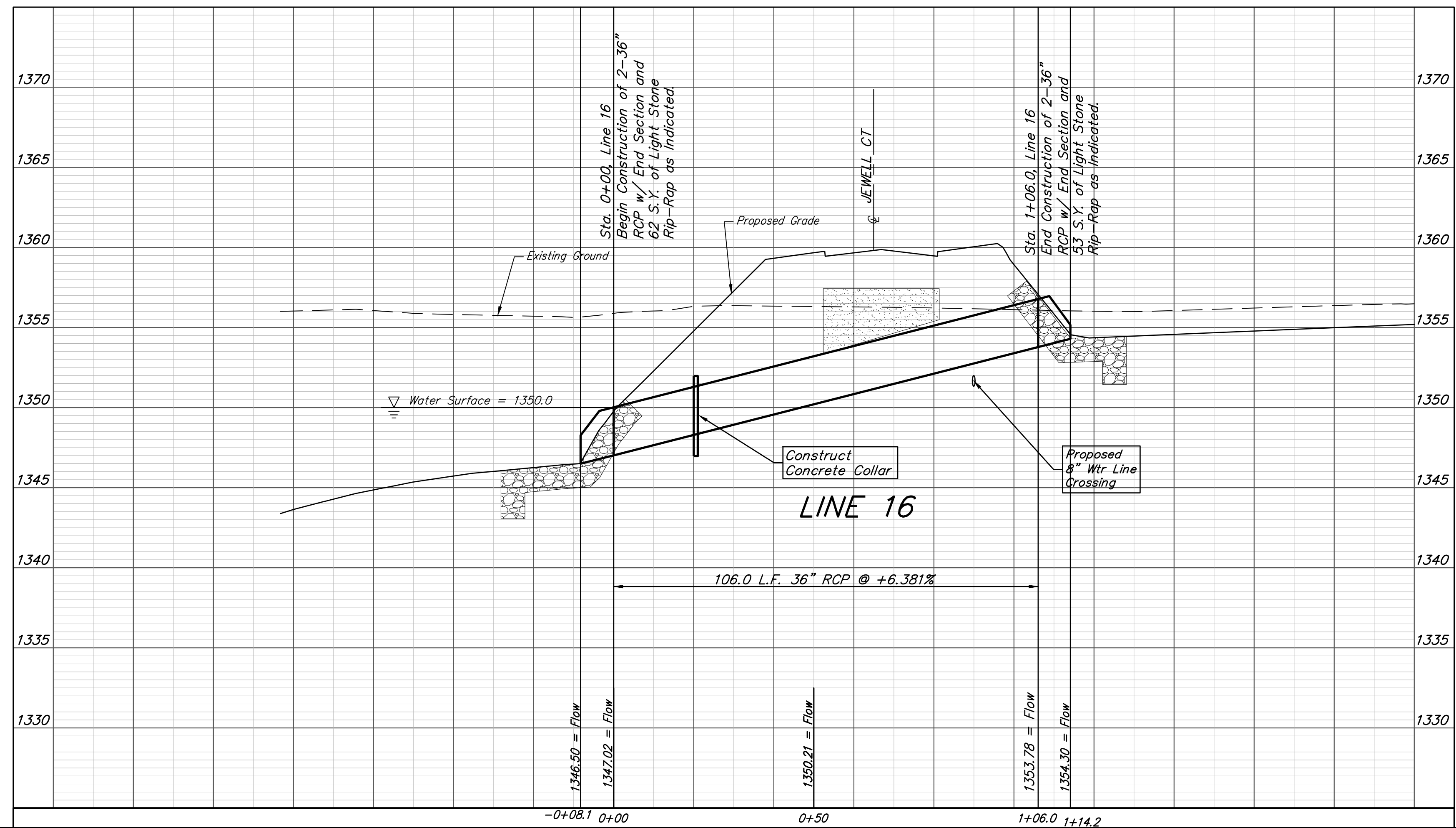
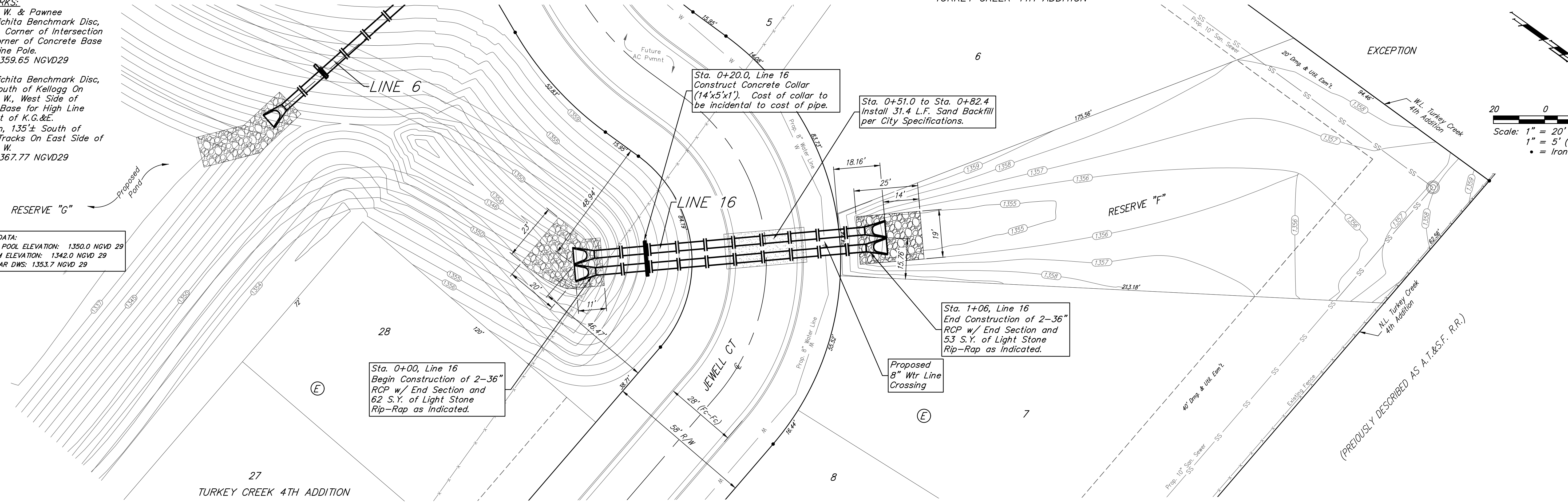


BENCHMARKS:
 135th St. W. & Pawnee
 City of Wichita Benchmark Disc,
 Northeast Corner of Intersection
 On SW Corner of Concrete Base
 of High Line Pole.
 Elev. = 1359.65 NGVD29

City of Wichita Benchmark Disc,
 0.4 Mi. South of Kellogg On
 135th St. W., West Side of
 Concrete Base for High Line
 Pole, West of K.G.&E.
 Substation, 135± South of
 Railroad Tracks On East Side of
 135th St. W.
 Elev. = 1367.77 NGVD29

POND DATA:
 STATIC POOL ELEVATION: 1350.0 NGVD 29
 BOTTOM ELEVATION: 1342.0 NGVD 29
 100 YEAR DWS: 1353.7 NGVD 29

TURKEY CREEK 4TH ADDITION



	Turkey Creek 4th Addition
	LINE 16
Storm Water Drain #467	
<small>Baughman Company, P.A. 315 Ellis St. Wichita, KS 67211 P 316-262-7271 F 316-262-0149 ENGINEERING SURVEYING PLANNING LANDSCAPE ARCHITECTURE</small>	
PROJECT NUMBER 468-2020-085444	DESIGN DMV DRAWN JAK
REVISIONS:	APPROVED _____ DATE 9/20/2020 SCALE Noted SHEET
39 OF 65	

E:\Projects\Turkey Creek 4th Engineering\Phase 1\SWD_2020-085444\SWD PLANS.dwg