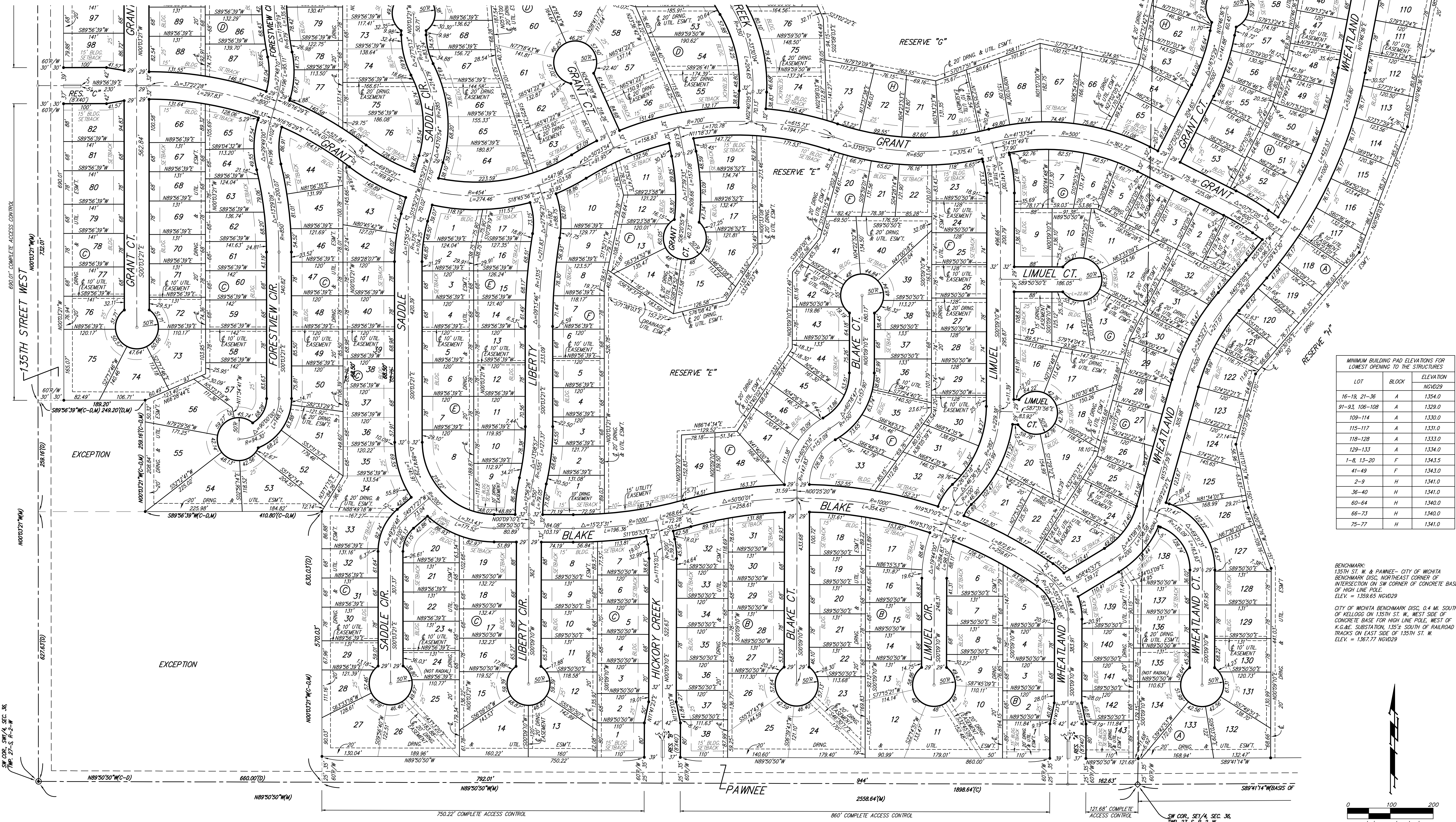


TURKEY CREEK 3RD ADDITION

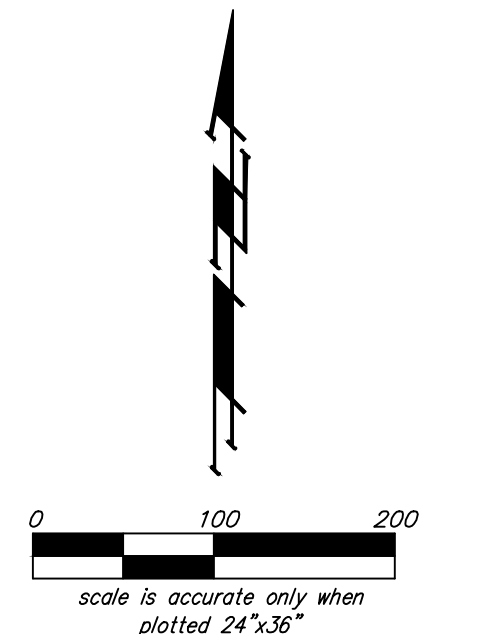
WICHITA, SEDGWICK COUNTY, KANSAS



LOT	BLOCK	ELEVATION
16-19, 21-36	A	1354.0
91-93, 106-108	A	1329.0
109-114	A	1330.0
115-117	A	1331.0
118-128	A	1333.0
129-133	A	1334.0
1-8, 13-20	F	1343.5
41-49	F	1343.0
2-9	H	1341.0
36-40	H	1341.0
60-64	H	1340.0
66-73	H	1340.0
75-77	H	1341.0

BENCHMARK:
 135TH ST. W. & PAWNEE - CITY OF WICHITA
 BENCHMARK DISC. NORTHEAST CORNER OF
 INTERSECTION ON SW CORNER OF CONCRETE BASE
 OF HIGH LINE POLE.
 ELEV. = 1359.65 NGVD29

CITY OF WICHITA BENCHMARK DISC. 0.4 M. SOUTH
 OF KELLOGG ON 135TH ST. W., WEST SIDE OF
 CONCRETE BASE FOR HIGH LINE POLE, WEST OF
 R.G.&E. SUBSTATION, 135 $\frac{1}{2}$ SOUTH OF RAILROAD
 TRACKS ON EAST SIDE OF 135TH ST. W.
 ELEV. = 1367.77 NGVD29



NOTE:
 A master grading plan for drainage has been developed for this subdivision and is on file with the City of Wichita, Kansas. All drainage easements, right-of-ways, or reserves shall remain at established grades or as modified with the approval of the City Engineer of the City of Wichita, Kansas. No obstructions which impede the flow of this drainage system shall be allowed.

- (M) = MEASURED
- (D) = DESCRIBED
- (P) = PLATTED
- (C) = CALCULATED
- (C-D) = CALCULATED PER DESCRIBED INFO.
- (C-P) = CALCULATED PER PLATTED INFO.
- = #4 REBAR W/ 'BAUGHMAN' CAP (SET)
- = BOLT OVER STONE (FOUND)
- ◇ = 1/2" IRON IN THIMBLE (FOUND)
- △ = 1" IRON IN BROKEN STONE (FOUND)
- = #5 REBAR IN THIMBLE (FOUND)
- ⊙ = 1" SQUARE PIN OVER STONE (FOUND)
- ⊗ = 1/4" IRON (FOUND)
- ▽ = 1/2" IRON (FOUND)

FOR REFERENCE ONLY
 SHEET
64 OF 65

Baughman Company, P.A.
 115 Ellis St., Wichita, KS 67211 P: 316.262.1721 F: 316.262.1049
 ENGINEERING | SURVEYING | PLANNING | LANDSCAPE ARCHITECTURE