

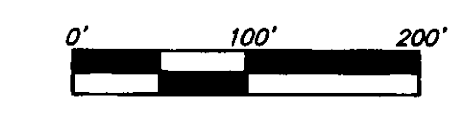
BROOKFIELD ADDITION WICHITA, SEDGWICK COUNTY, KANSAS

* = #4 REBAR W/ "BAUGHMAN" CAP (SET)
 ○ = 1" IRON PIPE (FOUND)
 ◇ = 2" ALUMINUM "SEDGWICK COUNTY" CAP (FOUND)
 △ = STONE (FOUND)
 □ = #6 REBAR (FOUND)

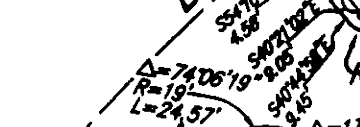
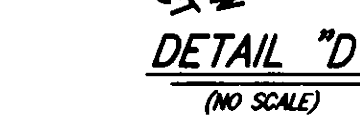
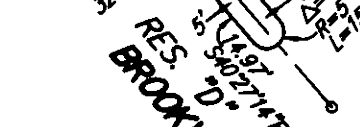
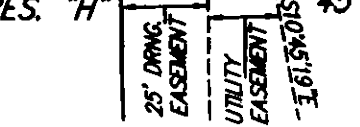
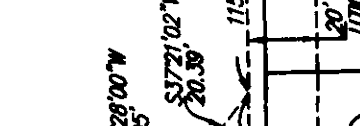
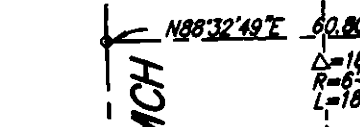
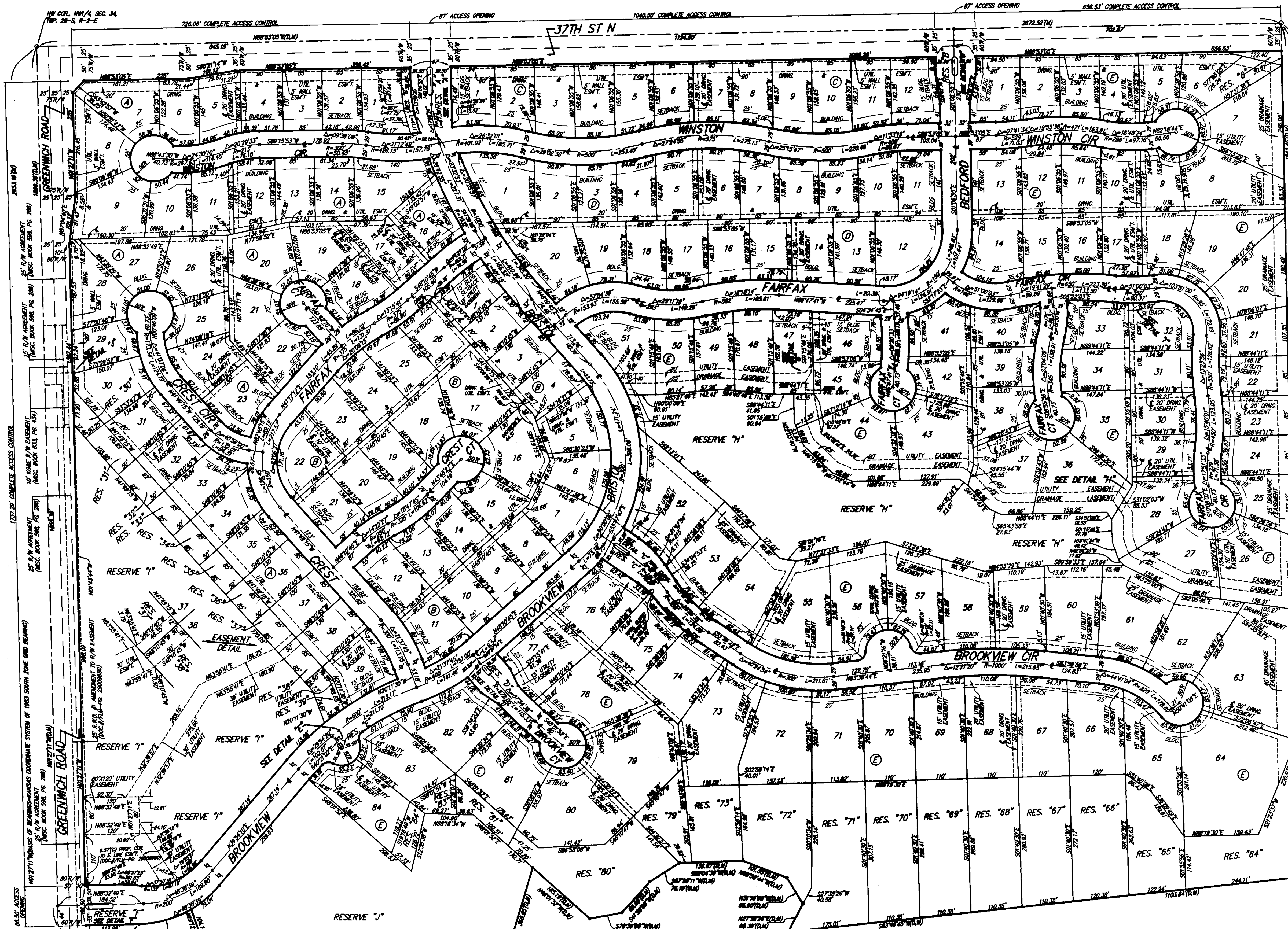
BENCHMARK:
 CHASEL SQUARE ON E. HEADWALL OF R.C.C. ON SOUTH SIDE OF 37TH ST. N., 178.0' W. & 18.8' S. OF THE NE COR. NW/4, SEC. 34, TWP. 26-S, R-2-E. ELEV. = 1373.00 NAVD83

CHASEL SQUARE ON E. SIDE OF SCHOOL SIGNAL POLE BASE, W. SIDE OF GREENWICH ROAD, 302' S. & 210' W. OF THE SW COR. NW/4, SEC. 34, TWP. 26-S, R-2-E. ELEV. = 1387.64 NAVD83

TOP OF 1" IRON PIPE AT NW COR. NW/4, SEC. 34, TWP. 26-S, R-2-E. ELEV. = 1380.04 NAVD83



LOT	BLOCK	ELEVATION NAVD83
15-19	A	1378.0
20-22	A	1378.5
23-25	A	1378.0
5-7	F	1377.0
26-28	F	1372.8
36-37	F	1372.8
43-45	F	1372.8
47-51	F	1372.8
52-61	F	1372.8
62	F	1372.5
63-66	F	1370.8
67-71	F	1372.0
72-73	F	1372.7
79-80	F	1373.0
81-84	F	1373.5



NOTE:
 A drainage plan has been developed for the plot and all drainage easements, rights-of-way, or reserves shall remain at established grade or as modified with the approval of the applicable City or County Engineer and unobstructed to allow for the conveyance of stormwater.