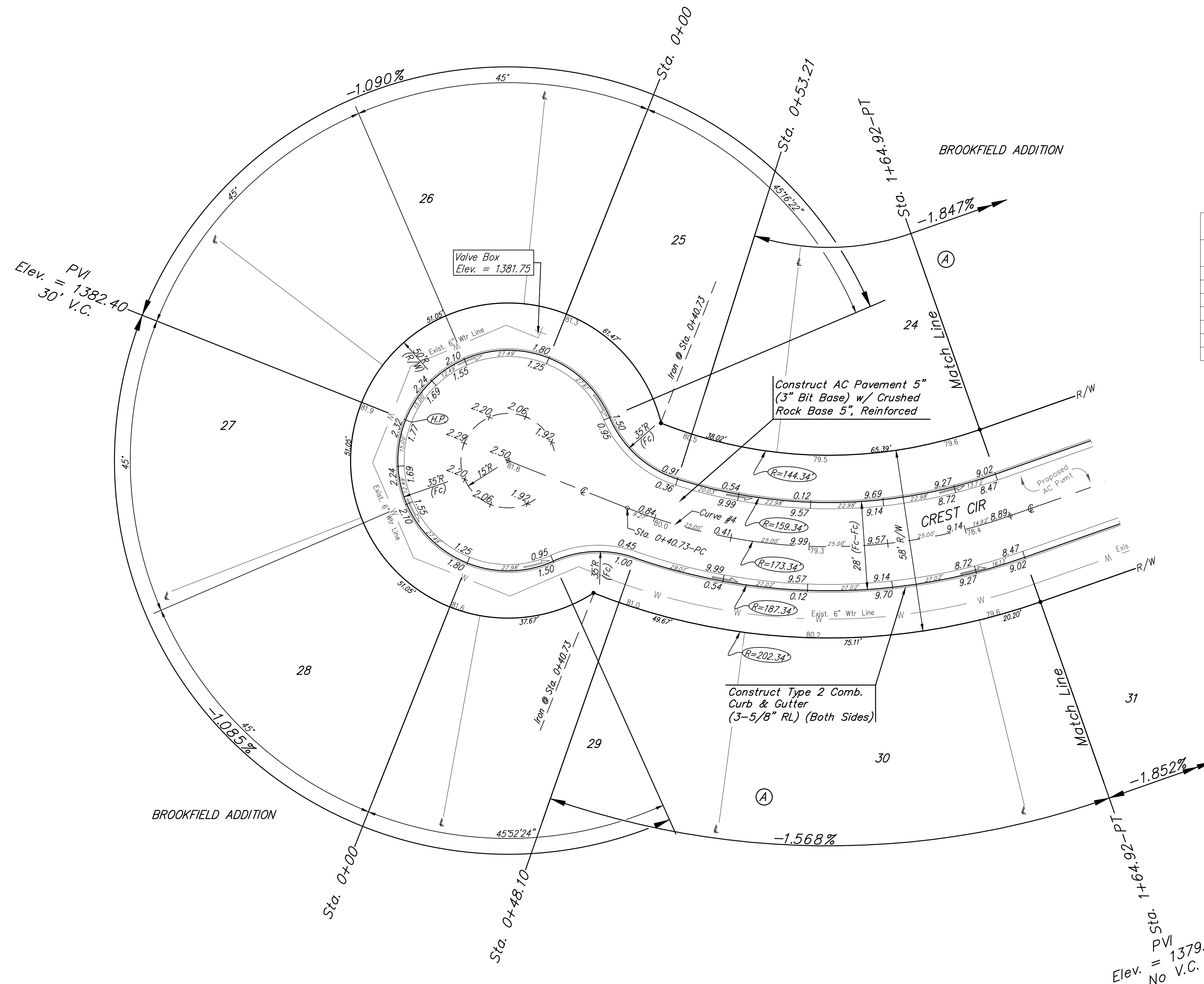
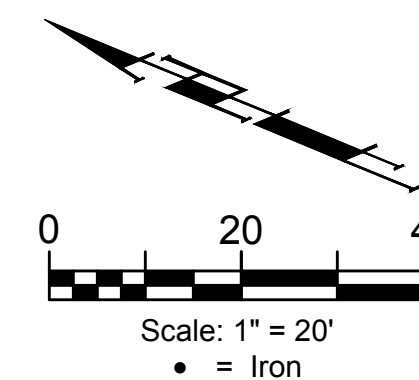


BENCHMARKS:
 RR spike in asphalt, SW COR., N1/2,
 SW1/4, Sec. 34, TWP. 26-S, R-2-E.
 Elev. = 1400.59 NAVD88

RR spike in E. face of power pole,
 174± N. of S. line, N1/2, SW1/4 &
 49± E. of W. line, SW1/4,
 Sec. 34, TWP. 26-S, R-2-E.
 Elev. = 1398.64 NAVD88

RR spike in S. face of power pole,
 294± S. of N. line, SW1/4, &
 48± E. of W. line, SW1/4,
 Sec. 34, TWP. 26-S, R-2-E.
 Elev. = 1386.14 NAVD88



Curve #4
 Curve Data Based on Centerline
 Rad. = 173.34' Delta = 41°03'06" Tangent = 64.90'
 Arc = 124.19' L.C. = 121.56' Def./Ft. = 9.91666 Min.

Station	Arc	Face Chord Lengths		Defl.	Total Defl.
		B' Left	B' Right		
0+40.73	-	-	-	0'00"00"	0'00"00"
0+50.00	9.27'	8.09'	10.45'	1'31"56"	1'31"56"
0+75.00	25.00'	21.81'	28.15'	4'07"55"	5'39"51"
1+00.00	25.00'	21.81'	28.15'	4'07"55"	9'47"46"
1+25.00	25.00'	21.81'	28.15'	4'07"55"	13'55"41"
1+50.00	25.00'	21.81'	28.15'	4'07"55"	18'03"36"
1+64.92	14.92'	13.02'	16.81'	2'27"57"	20'31"33"

PVI
 Elev. = 1382.40
 30' V.C.

Sta. PVI
 Elev. = 1379.02
 No V.C.

Roll type curb & gutter to be constructed on the pavement on this sheet. Top of curb elevation are given for full height curb.

	Brookfield Addition - Phase 2A CREST CIR. Sta. 0+00 to Sta. 1+64.92
	Baughman Company, P.A. 315 Ellis St. Wichita, KS 67211 P 316-262-7271 F 316-262-0149 ENGINEERING SURVEYING PLANNING LANDSCAPE ARCHITECTURE
PROJECT NUMBER 472-2020-085623	DESIGN AEG DRAWN JAK APPROVED DATE Oct. 19, 2020
REVISIONS:	SCALE Noted SHEET
11 OF 39	