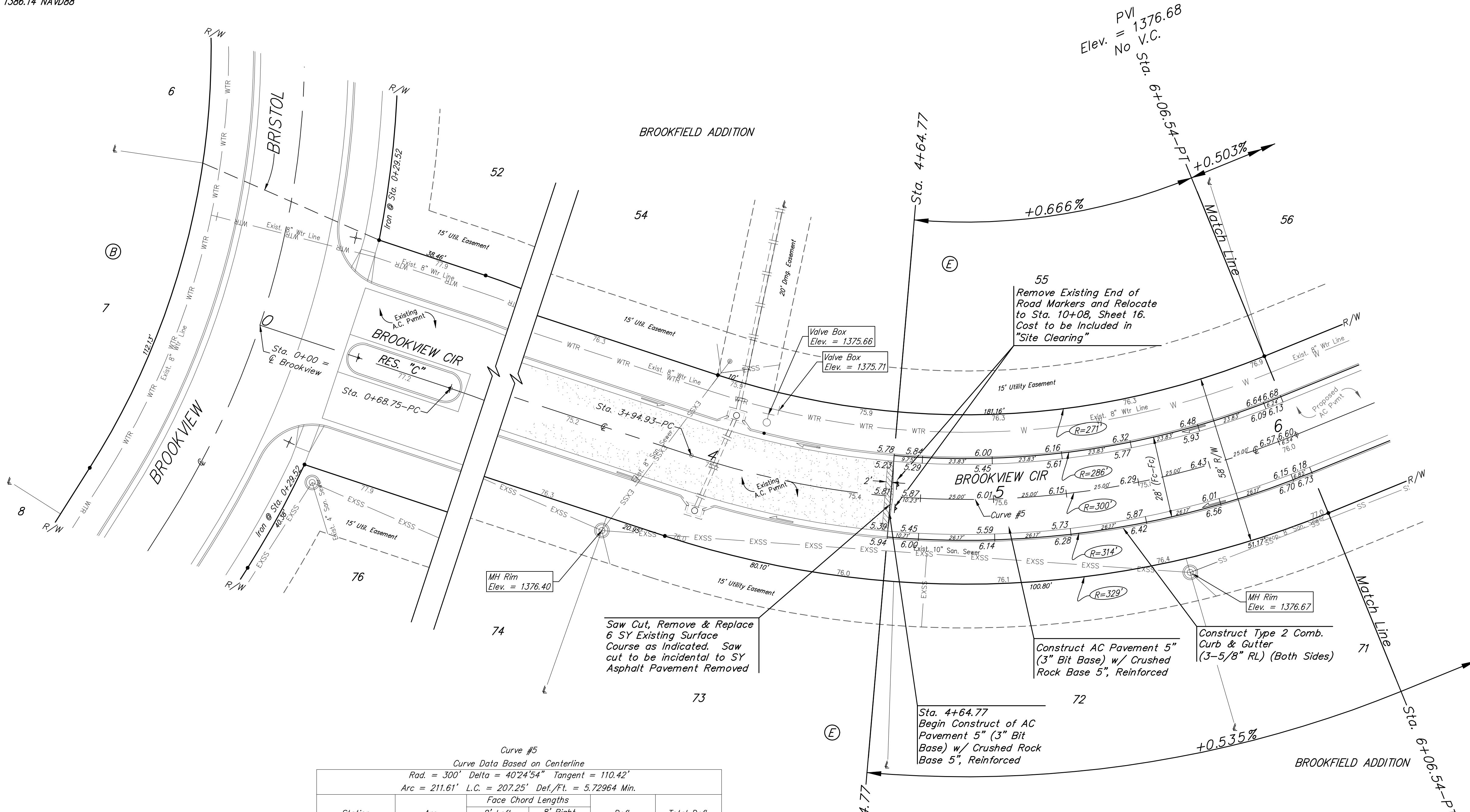
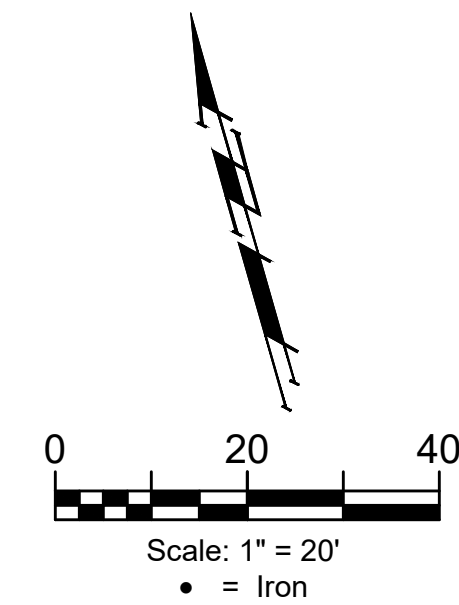


**BENCHMARKS:**  
 RR spike in asphalt, SW COR., N1/2, SW1/4, Sec. 34, TWP. 26-S, R-2-E.  
 Elev. = 1400.59 NAVD88

RR spike in E. face of power pole,  
 174± N. of S. line, N1/2, SW1/4 &  
 49± E. of W. line, SW1/4,  
 Sec. 34, TWP. 26-S, R-2-E.  
 Elev. = 1398.64 NAVD88

RR spike in S. face of power pole,  
 294± S. of N. line, SW1/4, &  
 48± E. of W. line, SW1/4,  
 Sec. 34, TWP. 26-S, R-2-E.  
 Elev. = 1386.14 NAVD88



Curve #5  
 Curve Data Based on Centerline

Rad. = 300' Delta = 40°24'54" Tangent = 110.42'  
 Arc = 211.61' L.C. = 207.25' Def./Ft. = 5.72964 Min.

Station	Arc	Face Chord Lengths		Defl.	Total Defl.
		8' Left	8' Right		
3+94.93	-	-	-	0°00'00"	0°00'00"
4+00.00	5.07'	4.70'	5.44'	0°29'03"	0°29'03"
4+25.00	25.00'	23.16'	26.83'	2°23'14"	2°52'17"
4+50.00	25.00'	23.16'	26.83'	2°23'15"	5°15'32"
4+64.77	14.77'	13.69'	15.85'	1°24'38"	6°40'10"
4+75.00	10.23'	9.48'	10.98'	0°58'36"	7°38'46"
5+00.00	25.00'	23.16'	26.83'	2°23'15"	10°02'01"
5+25.00	25.00'	23.16'	26.83'	2°23'14"	12°25'15"
5+50.00	25.00'	23.16'	26.83'	2°23'15"	14°48'30"
5+75.00	25.00'	23.16'	26.83'	2°23'14"	17°11'44"
6+00.00	25.00'	23.16'	26.83'	2°23'15"	19°34'59"
6+06.54	6.54'	6.06'	7.02'	0°37'28"	20°12'27"

Roll type curb & gutter to be constructed on the pavement on this sheet.  
 Top of curb elevation are given for full height curb.

	Brookfield Addition - Phase 3A
	<b>BROOKVIEW CIR</b>
Sta. 4+64.77 to Sta. 6+06.54	
<small>Baughman Company, P.A. 315 Ellis St. Wichita, KS 67211 P 316-262-7271 F 316-262-0149        ENGINEERING   SURVEYING   PLANNING   LANDSCAPE ARCHITECTURE</small>	
<small>PROJECT NUMBER 472-2020-085623</small>	<small>DESIGN AEG</small>
<small>REVISIONS:</small>	<small>DRAWN JAK</small>
	<small>APPROVED Noted</small>
	<small>DATE Oct. 19, 2020</small>
	<small>SCALE Noted</small>
	<small>SHEET <b>14 OF 39</b></small>