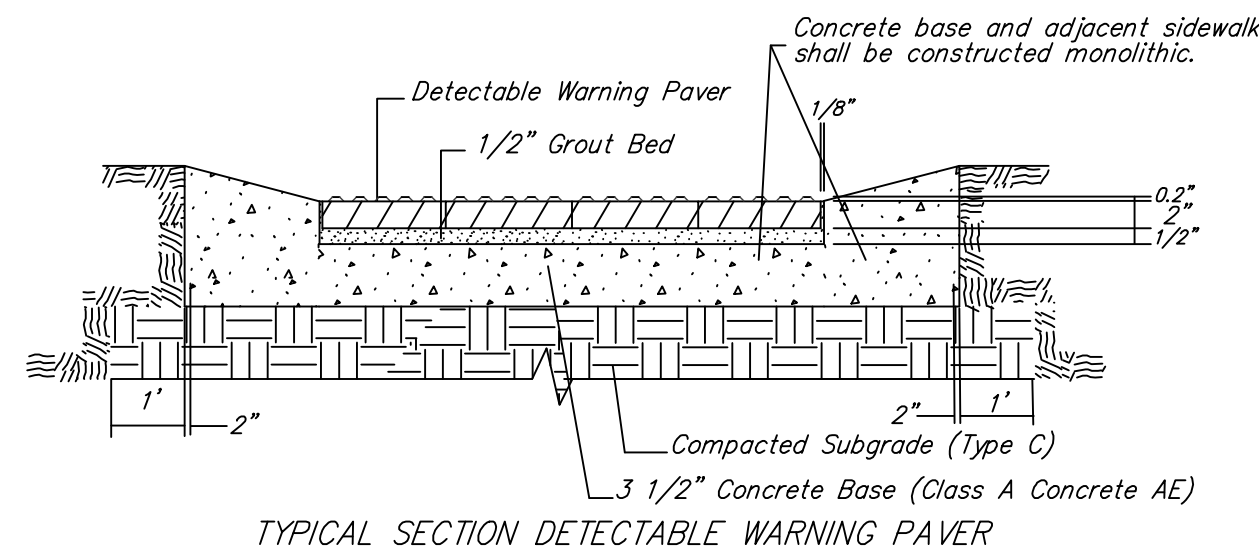
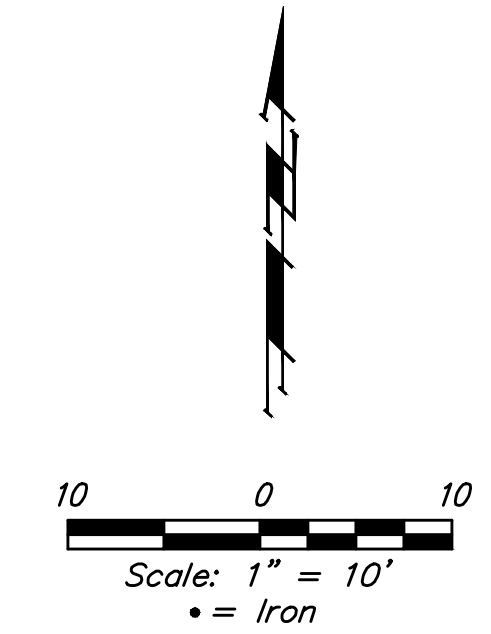


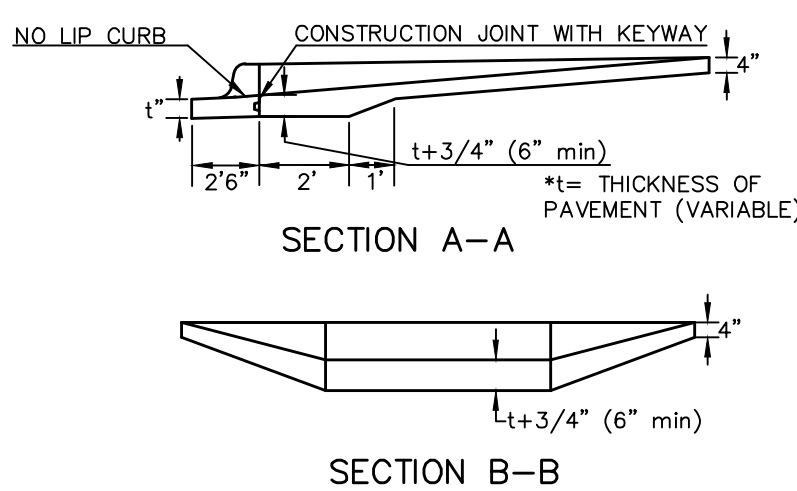
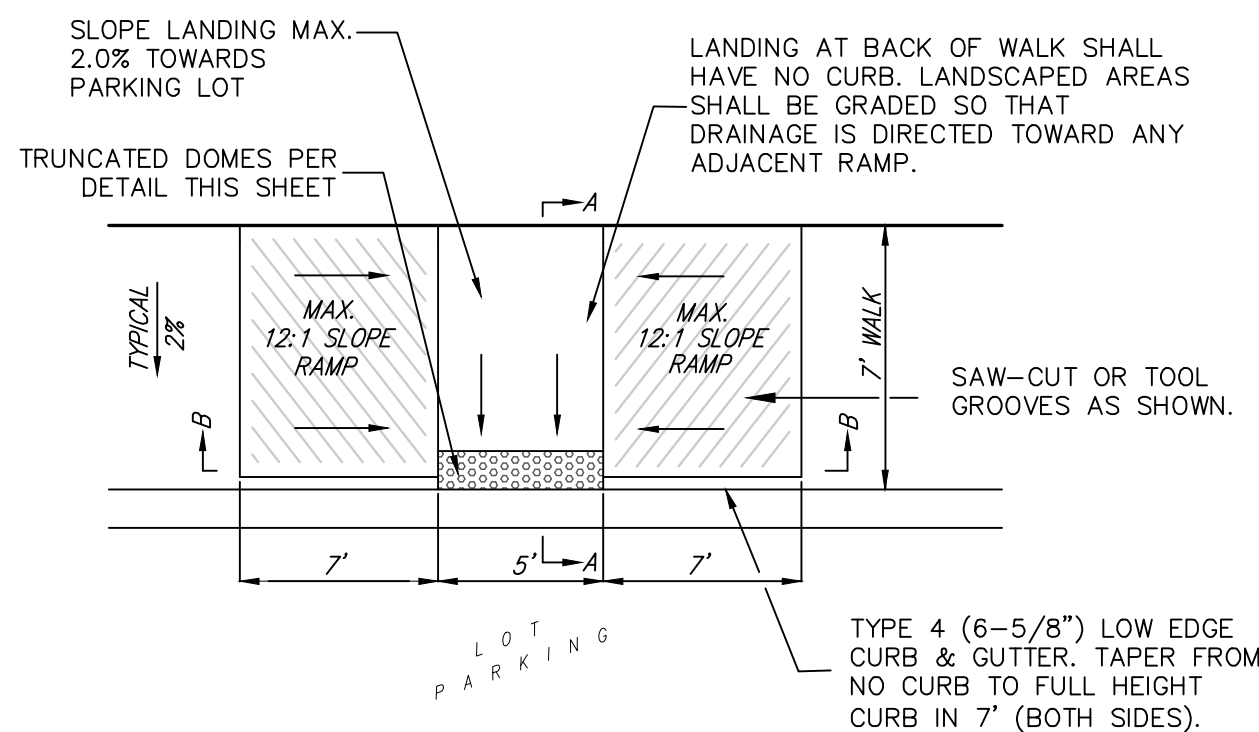
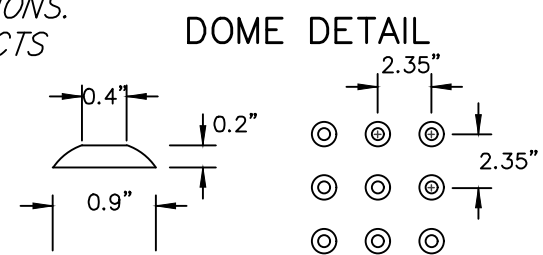
BENCHMARKS:
 RR spike in asphalt, SW COR., N1/2, SW1/4, Sec. 34, TWP. 26-S, R-2-E.
 Elev. = 1400.59 NAVD88

RR spike in E. face of power pole,
 174± N. of S. line, N1/2, SW1/4 &
 49± E. of W. line, SW1/4,
 Sec. 34, TWP. 26-S, R-2-E.
 Elev. = 1398.64 NAVD88

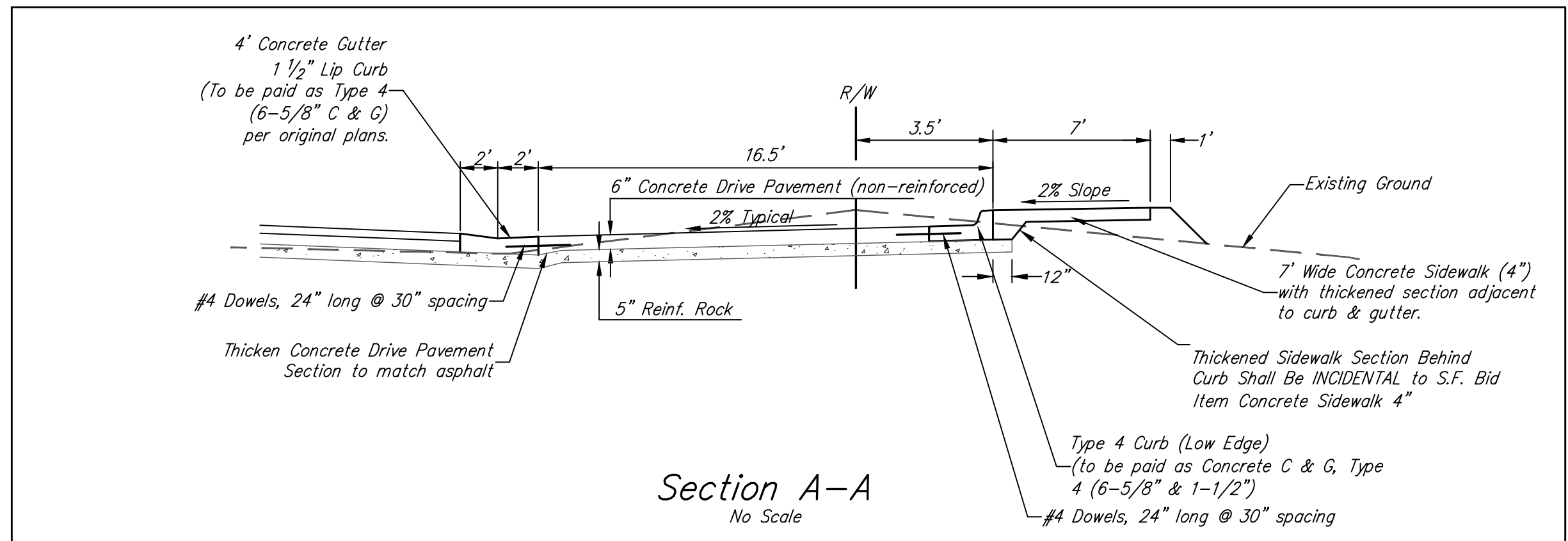
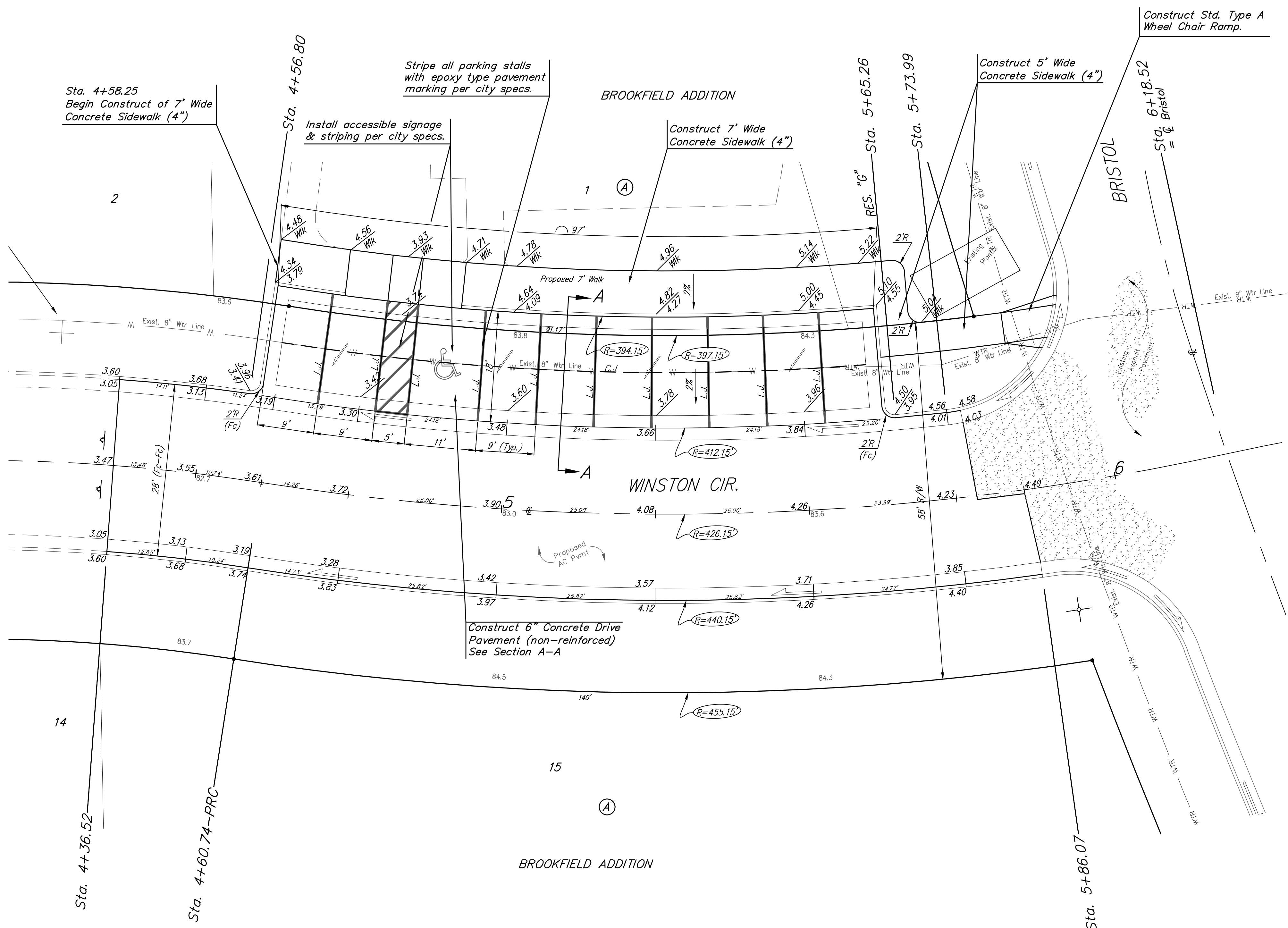
RR spike in S. face of power pole,
 294± S. of N. line, SW1/4, &
 48± E. of W. line, SW1/4,
 Sec. 34, TWP. 26-S, R-2-E.
 Elev. = 1386.14 NAVD88



NOTE: HANOVER DETECTABLE WARNING PAVERS (OR AN APPROVED ALTERNATE) SHALL BE USED IN ALL WHEELCHAIR RAMPS. THE 11 3/4" RED 15' PAVER SHALL BE USED IN ALL APPLICATIONS.
 HANOVER ARCHITECTURAL PRODUCTS
 240 BENDER ROAD
 HANOVER, PA 17331
 1-717-637-0500
 www.hanoverpavers.com



WHEELCHAIR RAMP DETAILS



6" Concrete Drive Pavement on this sheet to be tied to curb & gutter on all sides with #4 dowels, 24" long on 30" Centers.
 Parking area constructed with these plans to be maintained by HOA and permitted with Right-of-Way Use permit.

Roll type curb & gutter to be constructed on the pavement on this sheet.
 Top of curb elevation are given for full height curb.

	Brookfield Addition - Phase 2A	
	ON-STREET PARKING	
<small>Baughman Company, P.A. 315 Ellis St. Wichita, KS 67211 P 316-262-7271 F 316-262-0149 ENGINEERING SURVEYING PLANNING LANDSCAPE ARCHITECTURE</small>		
<small>PROJECT NUMBER 472-2020-085623</small>	<small>DESIGN AEG</small>	<small>DRAWN JAK</small>
<small>REVISIONS:</small>	<small>APPROVED</small>	<small>DATE Oct. 19, 2020</small>
	<small>SCALE Noted</small>	<small>SHEET 18 OF 39</small>