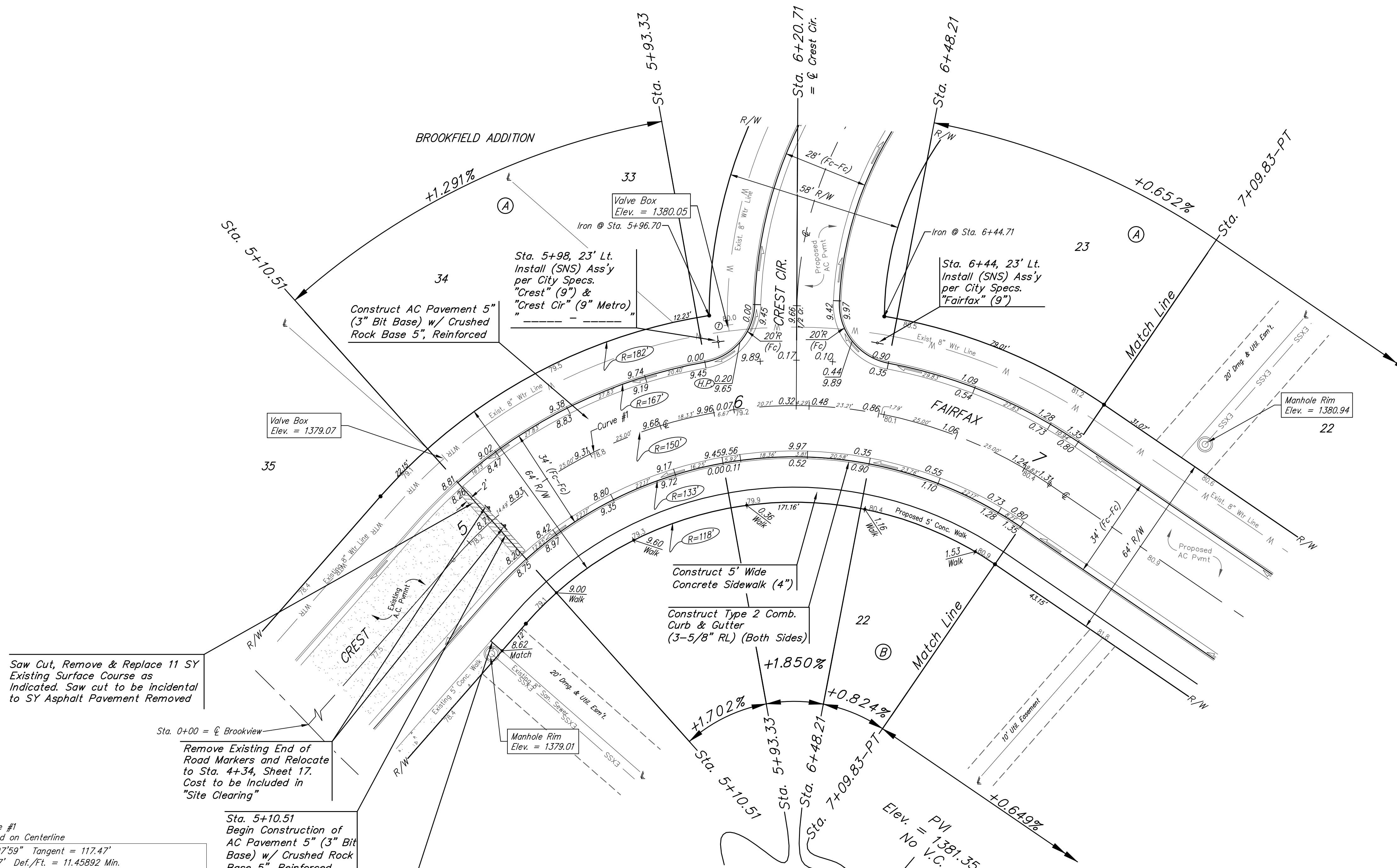
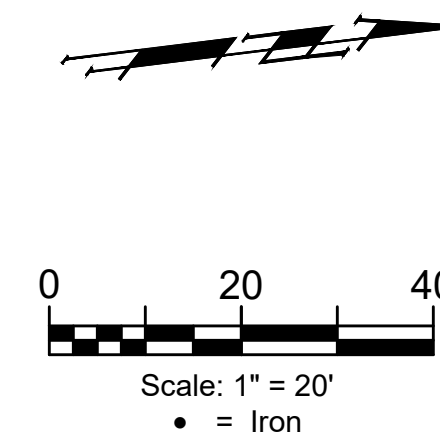


BENCHMARKS:
 RR spike in asphalt, SW COR., N1/2, SW1/4, Sec. 34, TWP. 26-S, R-2-E. Elev. = 1400.59 NAVD88

RR spike in E. face of power pole, 174± N. of S. line, N1/2, SW1/4 & 49± E. of W. line, SW1/4, Sec. 34, TWP. 26-S, R-2-E. Elev. = 1398.64 NAVD88

RR spike in S. face of power pole, 294± S. of N. line, SW1/4, & 48± E. of W. line, SW1/4, Sec. 34, TWP. 26-S, R-2-E. Elev. = 1386.14 NAVD88



Saw Cut, Remove & Replace 11 SY Existing Surface Course as Indicated. Saw cut to be incidental to SY Asphalt Pavement Removed

Remove Existing End of Road Markers and Relocate to Sta. 4+34, Sheet 17. Cost to be Included in "Site Clearing"

Sta. 5+10.51 Begin Construction of AC Pavement 5" (3" Bit Base) w/ Crushed Rock Base 5", Reinforced

Sta. 4+80.25 Begin Construction of 5' Wide Concrete Sidewalk (4")

Curve #1
 Curve Data Based on Centerline
 Rad. = 150' Delta = 76°07'59" Tangent = 117.47'
 Arc = 199.32' L.C. = 184.97' Def./Fl. = 11.45892 Min.

Station	Arc	Face Chord Lengths		Defl.	Total Defl.
		8' Left	8' Right		
5+10.51	-	-	-	0'00"00"	0'00"00"
5+25.00	14.49'	16.90'	12.07'	2'46"02"	2'46"02"
5+50.00	25.00'	29.13'	20.81'	4'46"29"	7'32"31"
5+75.00	25.00'	29.13'	20.81'	4'46"28"	12'18"59"
5+93.33	18.33'	21.37'	15.27'	3'30"03"	15'49"02"
6+00.00	6.67'	7.78'	5.56'	1'16"26"	17'05"28"
6+25.00	25.00'	29.13'	20.81'	4'46"28"	21'51"56"
6+48.21	23.21'	27.05'	19.32'	4'25"58"	26'17"54"
6+50.00	1.79'	2.09'	1.49'	0'20"30"	26'38"24"
6+75.00	25.00'	29.13'	20.81'	4'46"29"	31'24"53"
7+00.00	25.00'	29.13'	20.81'	4'46"28"	36'11"21"
7+09.83	9.83'	11.47'	8.19'	1'52"39"	38'04"00"

Roll type curb & gutter to be constructed on the pavement on this sheet. Top of curb elevation are given for full height curb.

	CREST Brookfield Addition - Phase 2A Sta. 5+10.51 to Sta. 7+09.83
	Baughman Company, P.A. 315 Ellis St. Wichita, KS 67211 P 316-262-7271 F 316-262-0149 ENGINEERING SURVEYING PLANNING LANDSCAPE ARCHITECTURE
PROJECT NUMBER 472-2020-085623	DESIGN AEG DRAWN JAK APPROVED DATE Oct. 19, 2020 SCALE Noted SHEET
REVISIONS:	8 OF 39