

GENERAL NOTES:

1. Contractor will be required to provide notice to utility companies a minimum of seventy-two (72) hours prior to any excavation, as follows:

- Kansas One-Call 687-2470
- The Contractor must notify the following in case of an emergency:
- Cox Communications 262-4270
- Kansas Gas Service 1-888-482-4950
- Westar Energy 383-8650
- Aquila Energy 1-800-303-0357
- ATT 268-2245
- City of Wichita Water Dept. 268-4563
- City of Wichita Sewer Maint. 268-4024
- City of Wichita Storm Sewer Maint. 268-4090
- City of Wichita Traffic Maint. 268-4034
- Conoco Phillips Pipeline Co. 1-877-267-2290
- Southern Star Pipeline Co. 529-6600
- Kinder-Morgan Pipeline Co. 1-888-844-5658

2. Utility service lines, poles, valve boxes, meters, and etcetera are to be adjusted as necessary by others prior to construction unless the plans specifically call for their adjustment by the Contractor or unless the plans specifically identify a utility to be adjusted by its owner during construction. Existing utilities and their location, as shown on the plans, represent the best information obtainable for design. The Contractor will be required to work around existing utilities within the right-of-way which do not conflict with proposed construction.

3. Rubble from the removal of miscellaneous structures and excess excavation which is to be wasted shall be disposed of on sites to be provided by the Contractor. These sites shall be approved by the Engineer as to suitability, appearance and site location. Locations, in the opinion of the Engineer, that will leave an unsightly appearance will not be approved. All disposal sites must be approved by the Kansas Department of Health and Environment. Material either stockpiled or disposed of in a flood plain would require a Kansas State Board of Agriculture permit. Any material dumped in waters of the United States or wetlands is subject to U.S. Corps of Engineers permitting regulations. Any material buried or stockpiled beyond approved construction limits would require additional archaeological investigations unless buried in a previously approved borrow location.

4. Trees and shrubs in public right-of-way which are in direct conflict with proposed new construction shall be removed by the Contractor QNLY with the Developer or Baughman Company approval. Trees and shrubs which are not in direct conflict with proposed new construction shall be saved and protected from damage.

5. The Contractor shall give all property owners and/or tenants of developed property abutting the construction of this project a minimum of ten (10) days notice prior to start of construction.

6. The Contractor shall be responsible for preserving property irons. The Contractor will be required to re-establish any property irons which are damaged or destroyed by his construction operations. Such irons shall be re-established by a licensed Land Surveyor in accordance with state laws.

7. All existing and proposed erosion control measures including silt fencing, erosion control mat, straw bales, inlet barriers, and const. entrance shall be maintained

throughout construction by the Contractor and until project is accepted by the City of Wichita. The on-site Engineer shall complete weekly reports on the status of erosion control measures. The Contractor shall be required to comply with maintenance and/or replacement of erosion control measures as determined by the on-site Engineer until project is accepted by City of Wichita.

8. A saw cut of at least one-half the depth of existing surface courses or one-fourth the depth of the existing total pavement thickness shall be provided at locations where proposed construction abuts the existing surface course or pavement for which partial removal of that surface or pavement is required. Sawed joint to facilitate removal within three (3) feet of existing joints will not be permitted and for such instances the limits of removal shall extend to the existing joint. Such saw cuts will not be paid for directly and this cost shall be considered as subsidiary to the removal of the surface or pavement.

9. All areas disturbed during construction shall be seeded as noted on the Erosion Control Plan. Contractor shall prepare ground per City of Wichita Specifications. All costs associated with seeding shall be included in bid item "Project Seeding"

10. The Contractor shall adjust valve boxes as necessary to match proposed grade. Cost to be included in bid item, "Site Restoration."

11. The Contractor shall drain any standing water in sump areas of the proposed pavement. Contractor shall overexcavate and recompact these areas as required to maintain compaction of 95% Standard Proctor Density. Cost to be incidental to pavement.

12. Limits of earthwork shall match existing ground elevations at the right-of-way line unless otherwise noted on the plans with a new finished grade elevation. When a new finished grade elevation is shown, the earthwork shall extend one foot beyond the right-of-way line and then slope up or down using permissible slopes to match the existing ground surface.

13. The Developer for this project is Kevin Mullen, Ritchie Development, (316) 684-7300

14. Excess excavation shall be stockpiled or spread on-site at a location determined by the Developer or Design Engineer.

15. Contractor to complete work on Phase 2A prior to proceeding with Phase 3A

Street Paving and Incidental Storm Water Sewer for Crest to serve BROOKFIELD ADDITION - PHASE 2A & 3A

CREST and FAIRFAX: From the Northwestern Line of Lot 35, Block A, North and Northeasterly to the Southeasterly Line of Lot 17, Block A

CREST CIR: (Lots 23 through 33, Block A) From the West Line of Crest, Northwesternly to and Including the Cul-de-sac

FAIRFAX CT: (Lots 18 through 22, Block A) From the North Line of Fairfax, North to and Including the Cul-de-sac

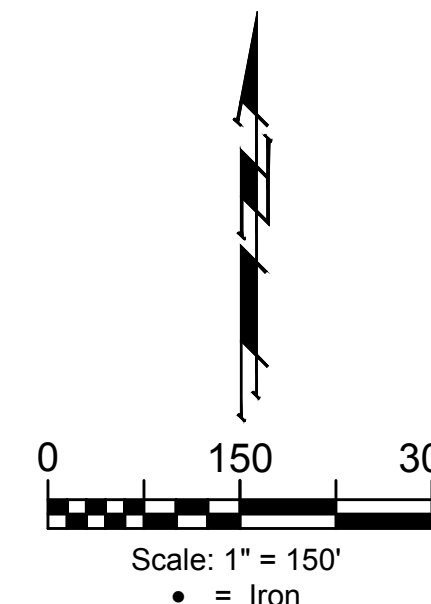
BROOKVIEW CIR: (Phase 3A) From the East Line of Lot 54, Block E, East to the East Line of Lot 68, Block E

CITY OF WICHITA, KANSAS

Gary Janzen, P.E. City Engineer

Phase 2A Project Number: 472-2020-085623, OCA Number: 810083

Phase 3A Project Number: 472-2020-085625, OCA Number: 810084



SHEET INDEX

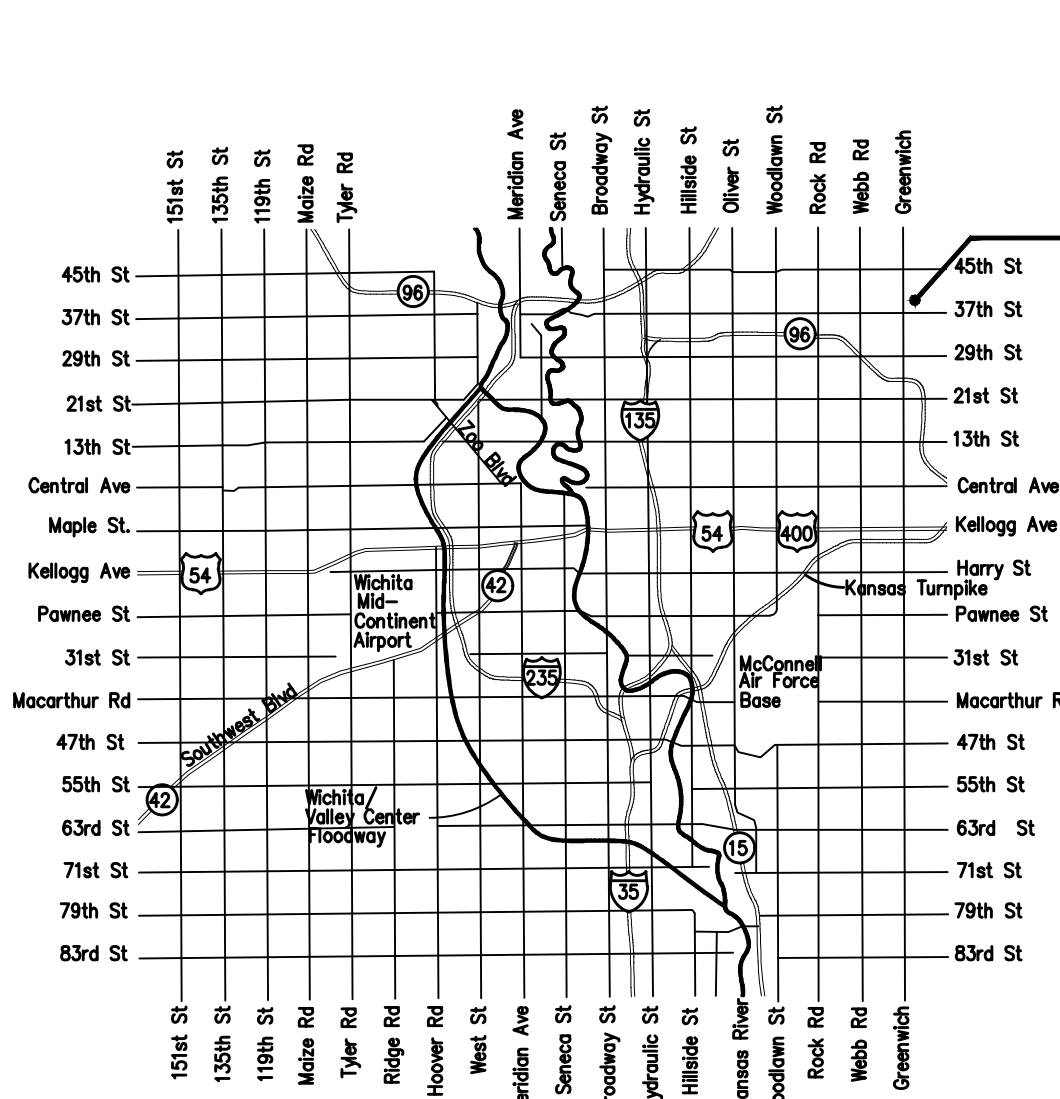
Title Sheet	1
Asphalt Paving Detail	2
Curb & Gutter Details	3
Sign Details	4
Valley Gutter Details	5
Wheelchair Ramp Details	6
Pavement Underdrain Details	7
Crest	8
Fairfax	9-10
Crest Cir.	11-12
Fairfax Ct.	13
Brookfield Cir	14-16
Winston Cir	17
On-street Parking	18
SWS Line 1	19
SWS Line 2	20
Erosion Control Plan	21
Erosion Control BMP Details	22-26
Std. Type 1A Curb Inlet Detail	27
Backyard Inlet Detail	28
Miscellaneous Detail	29
Frame and Cover Details	30
Cross Sections	31-36
Coordinate Sheet	37
Copy of Plat	38-39

BENCHMARKS

HK spike in asphalt, SW COR., N1/2, SW1/4, Sec. 34, TWP. 26-S, R-2-E. Elev. = 1400.59 NAVD88

RR spike in E. face of power pole, 174± N. of S. line, N1/2, SW1/4 & 49± E. of W. line, SW1/4, Sec. 34, TWP. 26-S, R-2-E. Elev. = 1398.64 NAVD88

RR spike in S. face of power pole, 294± S. of N. line, SW1/4, & 48± E. of W. line, SW1/4, Sec. 34, TWP. 26-S, R-2-E. Elev. = 1386.14 NAVD88



Vicinity Map

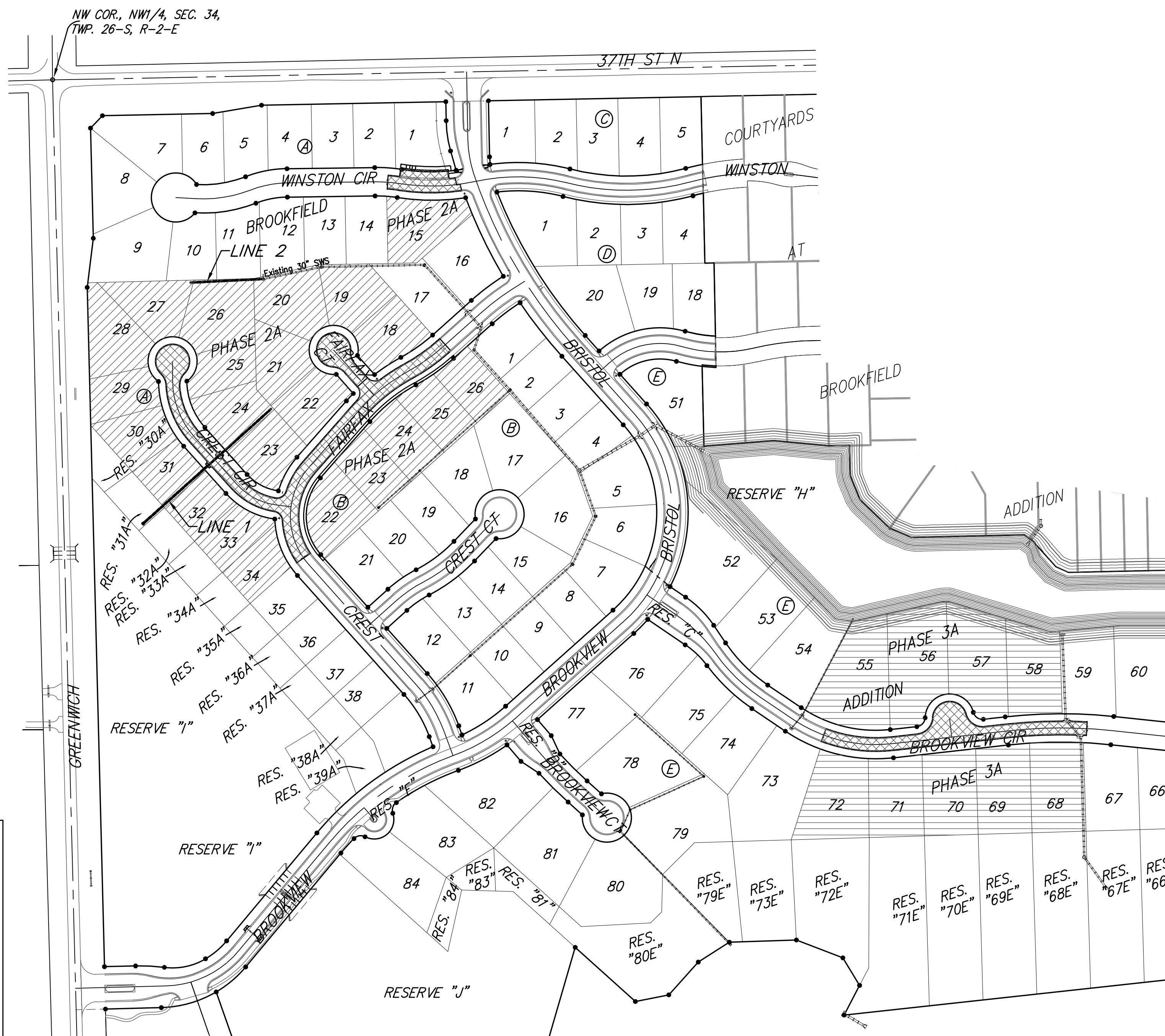
Project Earthwork Totals (CY unadjusted)			
	Excavation	Compacted Fill	Loose Fill
Phase 2A			
Street (R/W)	739	84	595
Easement Grading	443	-	309
Total	1,182	84	904
Phase 3A			
Street (R/W)	409	-	193
Easement Grading	133	-	34
Total	542	-	227

Project Length Phase 2A

1,270 L.F. = 0.24 Miles

Project Length Phase 3A

541 L.F. = 0.10 Miles



BENEFIT DISTRICT - PHASE 2A

BENEFIT DISTRICT - PHASE 3A



Baughman Company, P.A. 315 Ellis St. Wichita, KS 67211 P 316-262-7271 F 316-262-0149
ENGINEERING | SURVEYING | PLANNING | LANDSCAPE ARCHITECTURE

C:\Projects\Brookfield Addition_1604P190_Engineering\Phase 2A\STR_2006-E594\STR PLANS.dwg