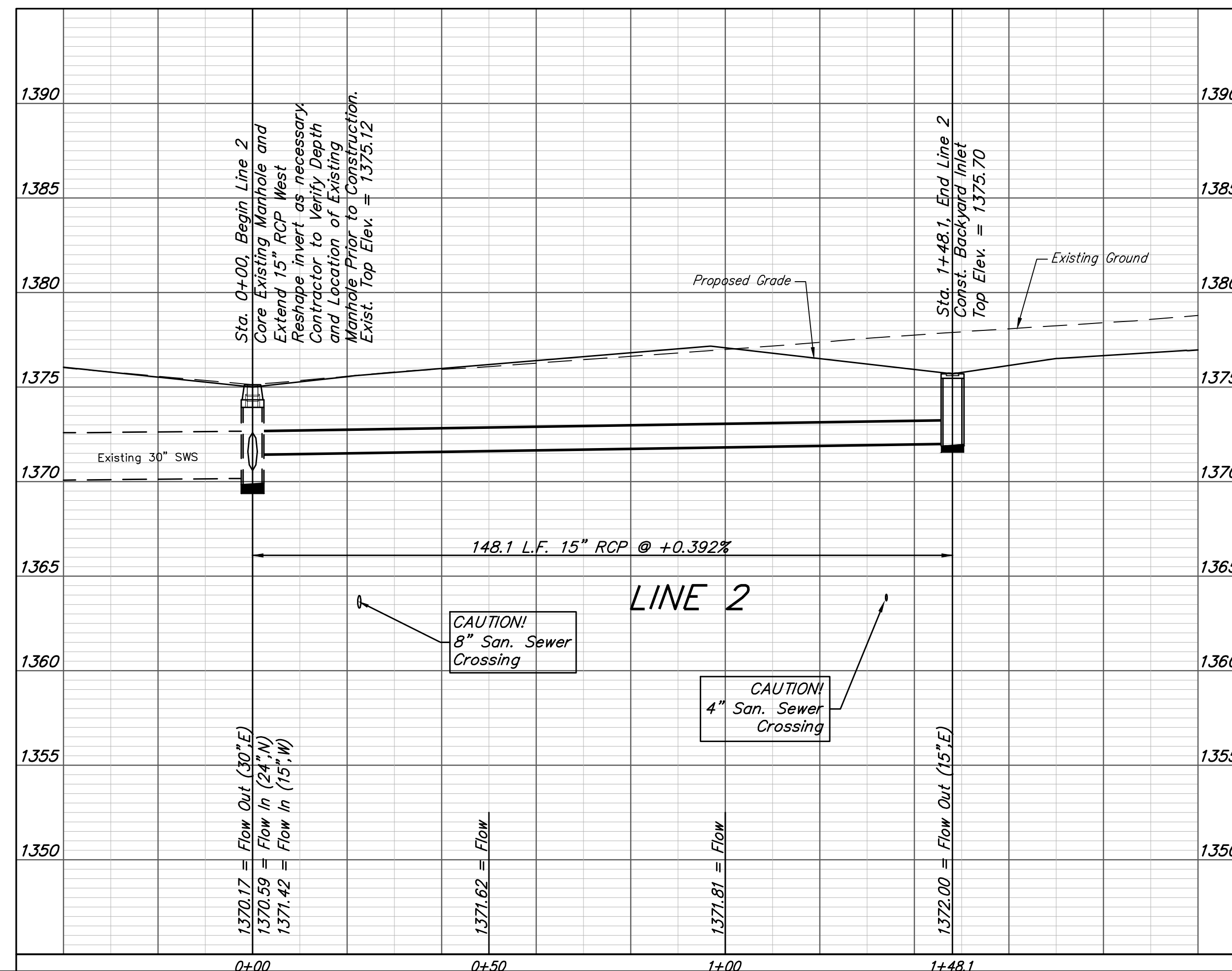
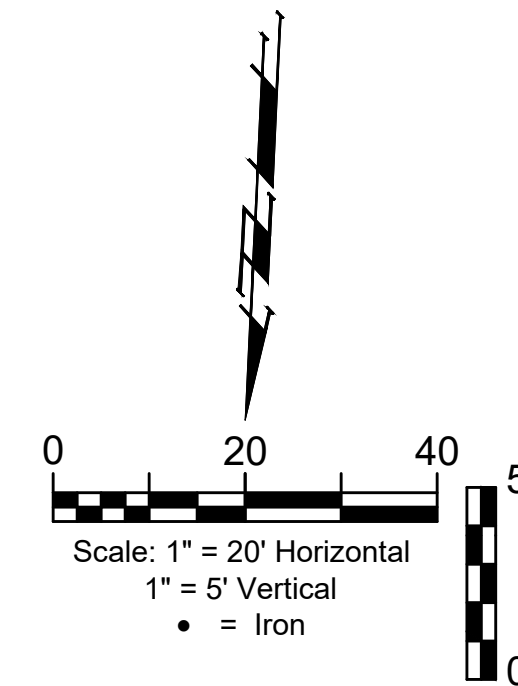
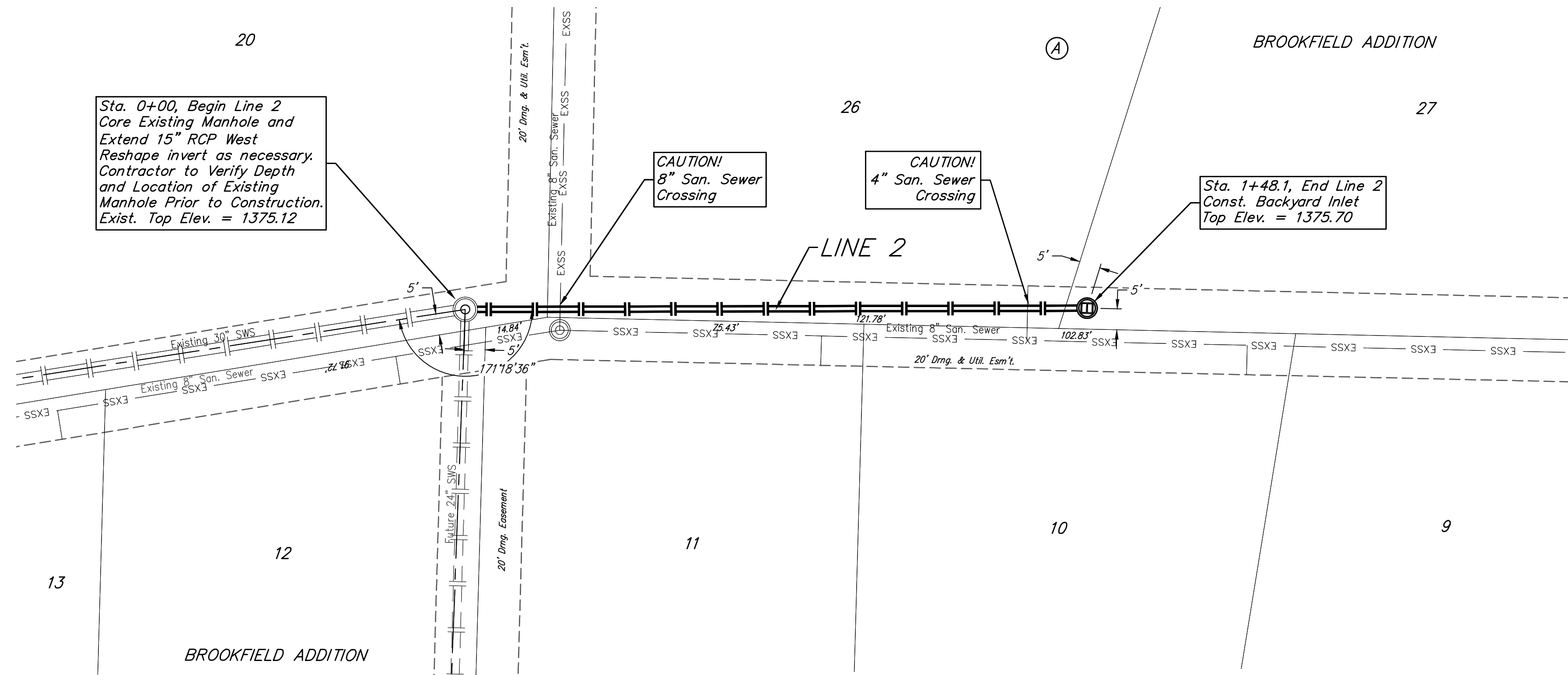


BENCHMARKS:
 RR spike in asphalt, SW COR., N1/2, SW1/4, Sec. 34, TWP. 26-S, R-2-E.
 Elev. = 1400.59 NAVD88

RR spike in E. face of power pole,
 174± N. of S. line, N1/2, SW1/4 &
 49± E. of W. line, SW1/4,
 Sec. 34, TWP. 26-S, R-2-E.
 Elev. = 1398.64 NAVD88

RR spike in S. face of power pole,
 294± S. of N. line, SW1/4, &
 48± E. of W. line, SW1/4,
 Sec. 34, TWP. 26-S, R-2-E.
 Elev. = 1386.14 NAVD88



	Brookfield Addition - Phase 2A	
	LINE 2	
Storm Water Sewer Improvements		
<small>Baughman Company, P.A. 315 Ellis St. Wichita, KS 67211 P 316-263-7271 F 316-262-0149 ENGINEERING SURVEYING PLANNING LANDSCAPE ARCHITECTURE</small>		
PROJECT NUMBER 472-2020-085623	DESIGN AEG	DRAWN JAK
REVISIONS:	APPROVED DATE Oct. 19, 2020	SCALE Noted SHEET 20 OF 39
<small>C:\Projects\Brookfield Addition_1604P100\Engineering\Phase 2A\STR_2006E594\SWS PLANS.dwg</small>		