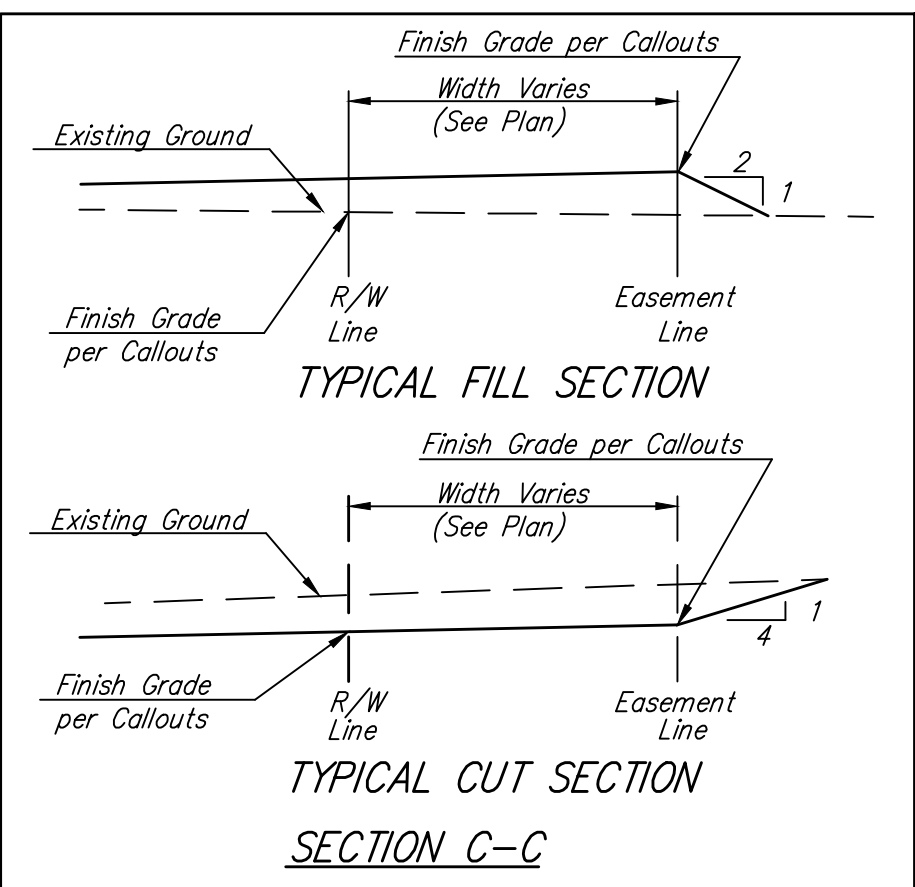
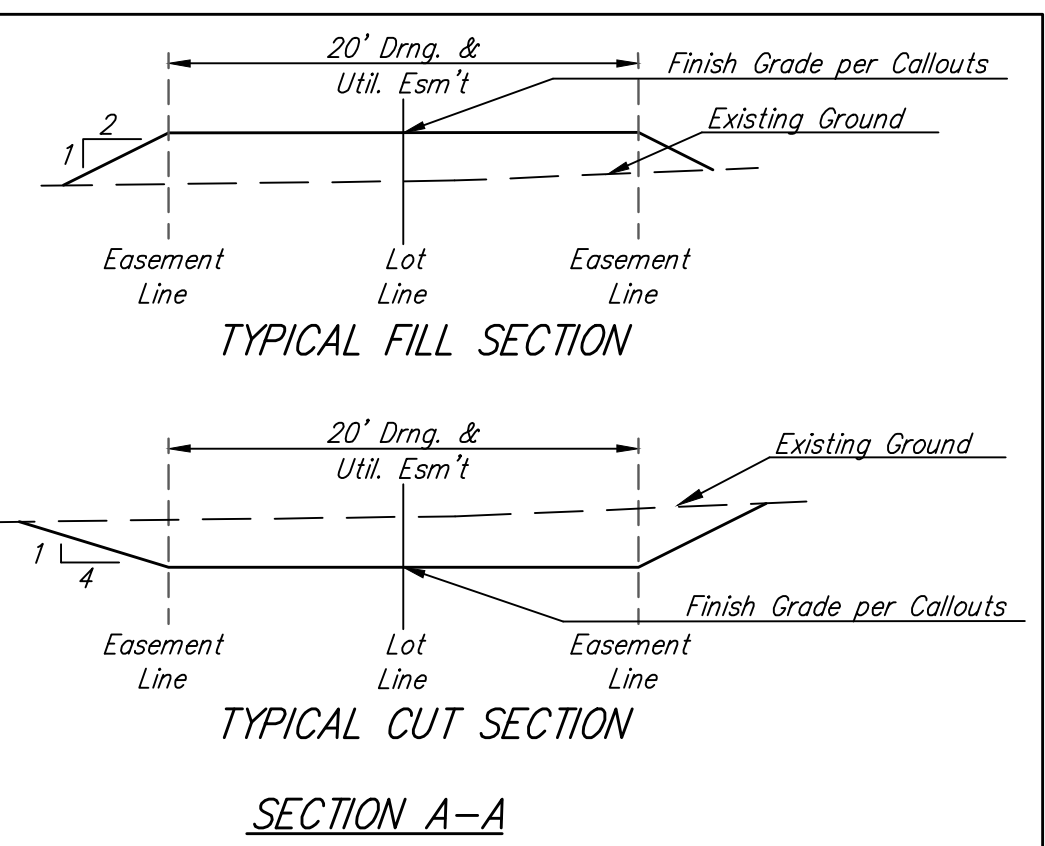


BENCHMARKS:
 RR spike in asphalt, SW COR., N1/2, SW1/4, Sec. 34, TWP. 26-S, R-2-E.
 Elev. = 1400.59 NAVD88

RR spike in E. face of power pole,
 174± N. of S. line, N1/2, SW1/4 &
 49± E. of W. line, SW1/4,
 Sec. 34, TWP. 26-S, R-2-E.
 Elev. = 1398.64 NAVD88

RR spike in S. face of power pole,
 294± S. of N. line, SW1/4, &
 48± E. of W. line, SW1/4,
 Sec. 34, TWP. 26-S, R-2-E.
 Elev. = 1386.14 NAVD88



= Easements To Be Graded

Approximate Easement Grading Quantities:
 (For Information Only)

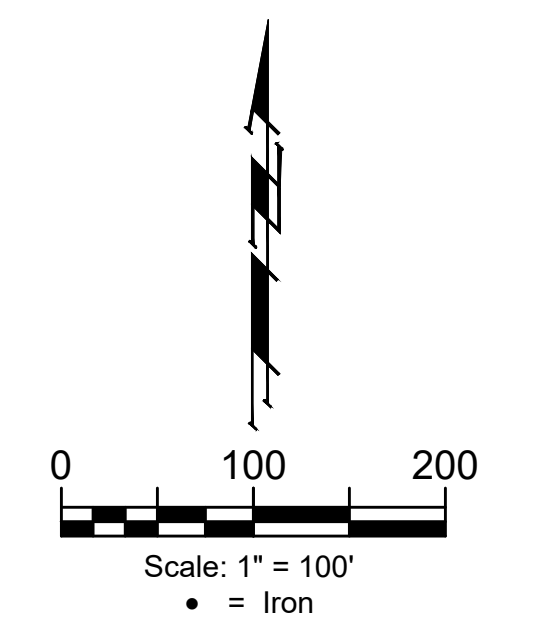
| | |
|-------------|----------|
| PHASE 2A | |
| Excavation: | 443 C.Y. |
| Fill: | 309 C.Y. |
| PHASE 3A | |
| Excavation: | 133 C.Y. |
| Fill: | 34 C.Y. |

The Contractor shall grade the easements as shown to the elevations given on the easement grading plan.

The Contractor shall 'straight' grade the easements between the elevations given. Where a callout designates 'Match', the Contractor will grade to the existing ground elevation.

Excess excavation from easement grading and from sanitary sewer construction shall be placed on the lots as indicated to the elevations shown.

All cost to be included in the Lump Sum bid item "Easement Grading"



Existing Ground - - - - - 1364 - - - - -

NOTES:
 1. Contractor shall make sure all erosion control is in place before project is accepted. This plan represents the minimum standard. Any additional erosion control measures shall be installed by the Contractor as needed.

2. All areas disturbed during construction shall be seeded, mulched, and fertilized as per Cover Sheet General Notes.

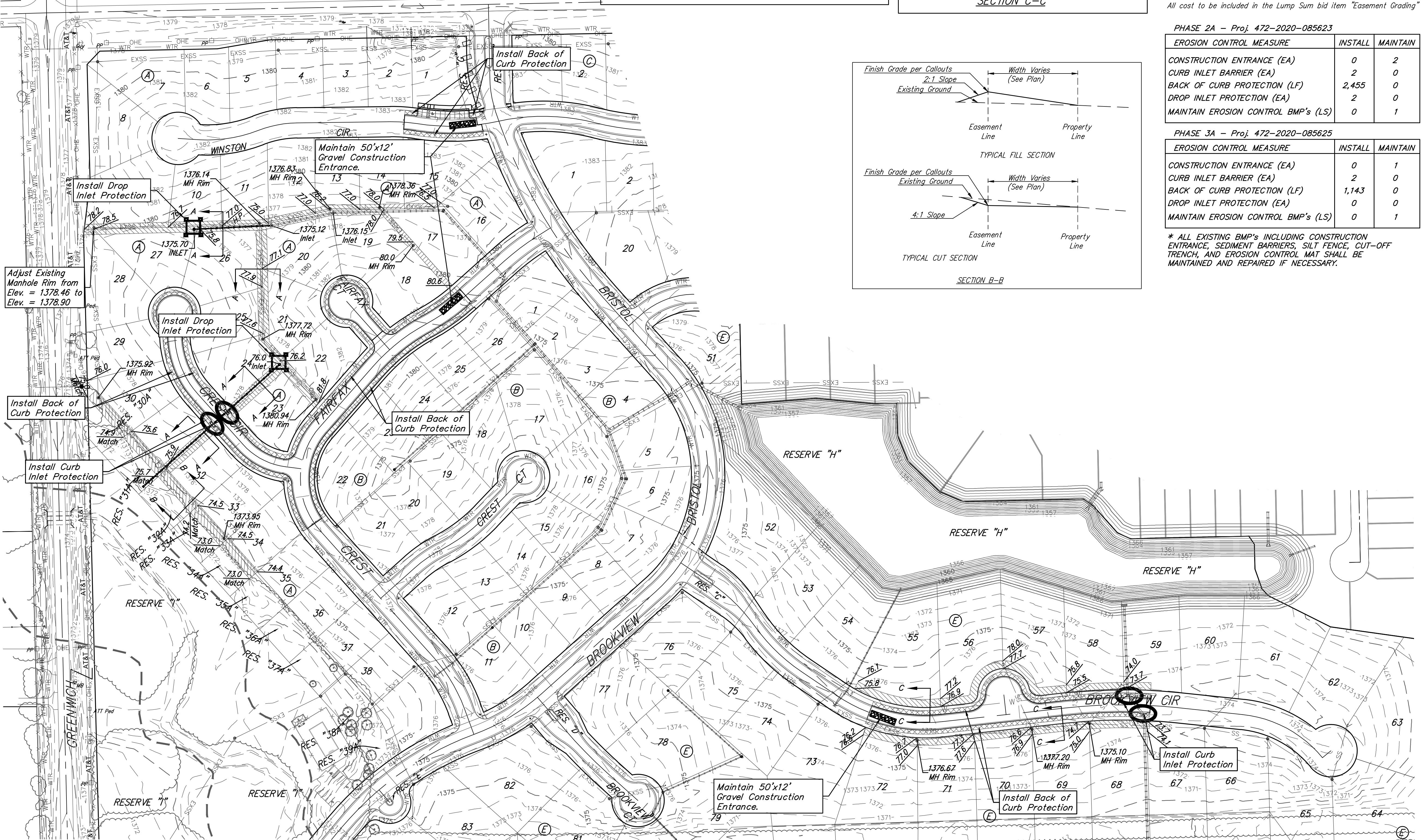
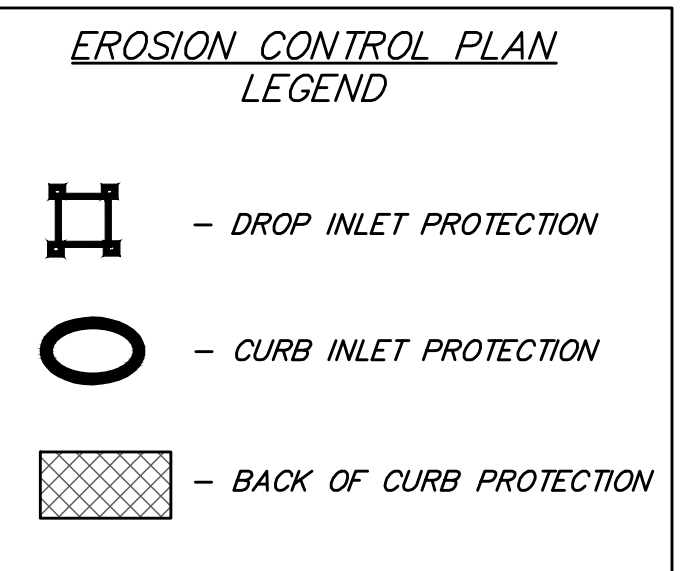
PHASE 2A - Proj. 472-2020-085623

| EROSION CONTROL MEASURE | INSTALL | MAINTAIN |
|-------------------------------------|---------|----------|
| CONSTRUCTION ENTRANCE (EA) | 0 | 2 |
| CURB INLET BARRIER (EA) | 2 | 0 |
| BACK OF CURB PROTECTION (LF) | 2,455 | 0 |
| DROP INLET PROTECTION (EA) | 2 | 0 |
| MAINTAIN EROSION CONTROL BMP's (LS) | 0 | 1 |

PHASE 3A - Proj. 472-2020-085625

| EROSION CONTROL MEASURE | INSTALL | MAINTAIN |
|-------------------------------------|---------|----------|
| CONSTRUCTION ENTRANCE (EA) | 0 | 1 |
| CURB INLET BARRIER (EA) | 2 | 0 |
| BACK OF CURB PROTECTION (LF) | 1,143 | 0 |
| DROP INLET PROTECTION (EA) | 0 | 0 |
| MAINTAIN EROSION CONTROL BMP's (LS) | 0 | 1 |

* ALL EXISTING BMP'S INCLUDING CONSTRUCTION ENTRANCE, SEDIMENT BARRIERS, SILT FENCE, CUT-OFF TRENCH, AND EROSION CONTROL MAT SHALL BE MAINTAINED AND REPAIRED IF NECESSARY.



| | | |
|--|---|--------------------------|
| | Brookfield Addition - Phase 2A & 3A | |
| | EROSION CONTROL / EASEMENT GRADING | |
| Street & SWS Improvements | | |
| Baughman Company, P.A. 315 Ellis St. Wichita, KS 67211 P 316-262-7271 F 316-262-0149 | | |
| ENGINEERING SURVEYING PLANNING LANDSCAPE ARCHITECTURE | | |
| PROJECT NUMBER 472-2020-085623 & 472-2020-085625 | DESIGN AEG | DRAWN JAK |
| REVISIONS: | APPROVED | DATE Oct. 19, 2020 |
| | SCALE Noted | SHEET 21 OF 39 |