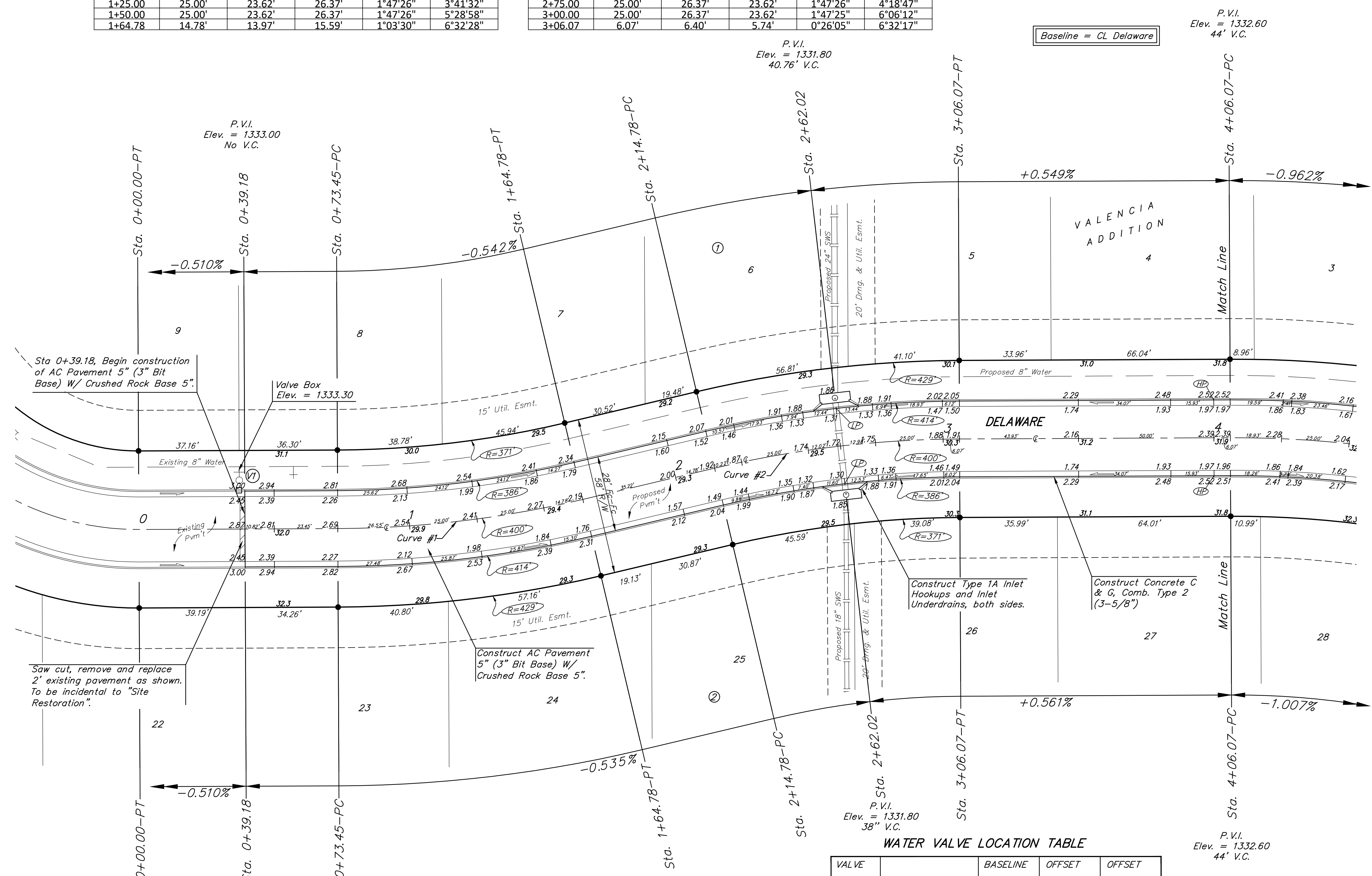
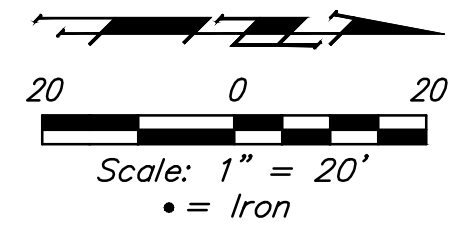


**BENCHMARKS:**  
 BM #1: "□" Cut in top of curb on south side of 51st St. N., near the NW corner of Lot 1, Block 1, Valencia Addition. Elev. = 1329.89 NAVD88

BM #2: COW disc set in curb on west side of Delaware St., near SE corner of Lot 8, Block 1, Valencia Addition. Elev. = 1322.70 NAVD88

Curve #1 Curve Data Based on Centerline					
Rad. = 400' Delta = 13°04'57" Tangent = 45.87'					
Arc = 91.33' L.C. = 91.13' Def./Ft. = 4.29733 Min.					
Face Chord Lengths	Arc	8' Left	8' Right	Defl.	Total Defl.
Station					
0+73.45	-	-	-	0°00'00"	0°00'00"
0+75.00	1.55'	1.46'	1.64'	0°06'40"	0°06'40"
1+00.00	25.00'	23.62'	26.37'	1°47'26"	1°54'06"
1+25.00	25.00'	23.62'	26.37'	1°47'26"	3°41'32"
1+50.00	25.00'	23.62'	26.37'	1°47'26"	5°28'58"
1+64.78	14.78'	13.97'	15.59'	1°03'30"	6°32'28"

Curve #2 Curve Data Based on Centerline					
Rad. = 400' Delta = 13°04'35" Tangent = 45.84'					
Arc = 91.29' L.C. = 91.09' Def./Ft. = 4.29720 Min.					
Face Chord Lengths	Arc	8' Left	8' Right	Defl.	Total Defl.
Station					
2+14.78	-	-	-	0°00'00"	0°00'00"
2+25.00	10.22'	10.78'	9.66'	0°43'55"	0°43'55"
2+50.00	25.00'	26.37'	23.62'	1°47'26"	2°31'21"
2+75.00	25.00'	26.37'	23.62'	1°47'26"	4°18'47"
3+00.00	25.00'	26.37'	23.62'	1°47'25"	6°06'12"
3+06.07	6.07'	6.40'	5.74'	0°26'05"	6°32'17"



Baseline = CL Delaware

P.V.I.  
Elev. = 1332.60  
44' V.C.

P.V.I.  
Elev. = 1331.80  
40.76' V.C.

P.V.I.  
Elev. = 1333.00  
No V.C.

P.V.I.  
Elev. = 1331.80  
38' V.C.

P.V.I.  
Elev. = 1332.60  
44' V.C.

**WATER VALVE LOCATION TABLE**

VALVE NUMBER	STREET	BASELINE STATION	OFFSET DISTANCE	OFFSET DIRECTION
V1	Delaware	0+37.16	23'	Lt.

Paving contractor will be responsible to operate all water valves on the project, in the presence of the inspector, to ensure accessibility to the valves, and that all valves (except blowoffs) are left in the "ON" position when the project is completed.

NOTE: ROLL TYPE CURB & GUTTER (TYPE 2) TO BE CONSTRUCTED ON THE PAVEMENT SHOWN ON THIS SHEET. TOP OF CURB ELEVATIONS ARE GIVEN FOR FULL HEIGHT CURB (TYPE 4).

Saw cut, remove and replace existing pavement in accordance with General Note #9, cover sheet.

VALENCIA ADDITION - PH. III  
**DELAWARE**  
 STREET IMPROVEMENTS

Baughman Company, P.A.  
 REGISTERED PROFESSIONAL ENGINEERS & ARCHITECTS  
 ENGINEERING | PLANNING | LANDSCAPE ARCHITECTURE  
 1000 N. 10th St., Suite 200, Phoenix, AZ 85006  
 Phone: 602.498.8888 | Fax: 602.498.8889  
 www.baughman.com