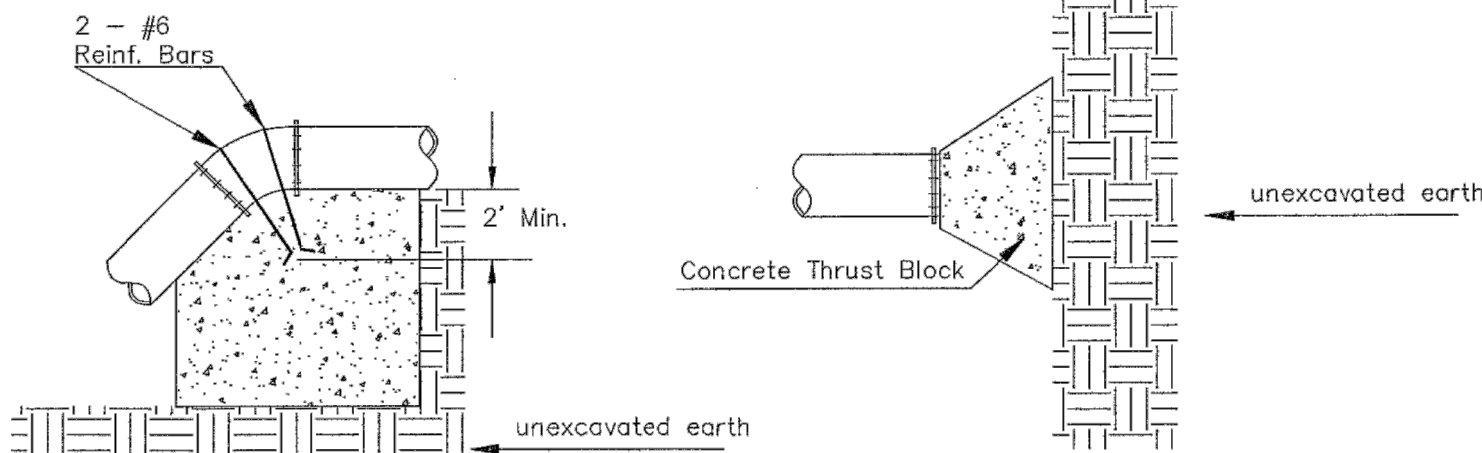


TEE

BEND

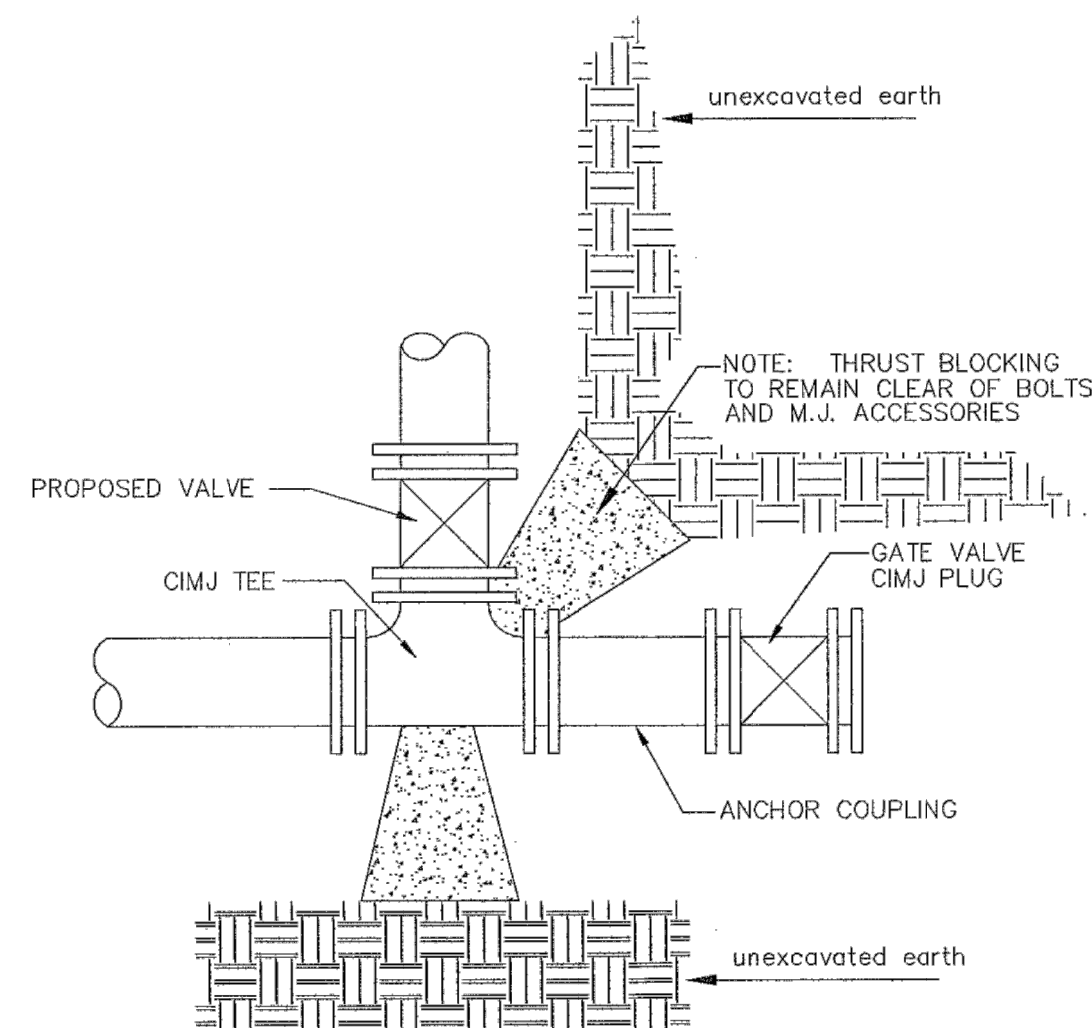


VERTICAL BEND

PLUG

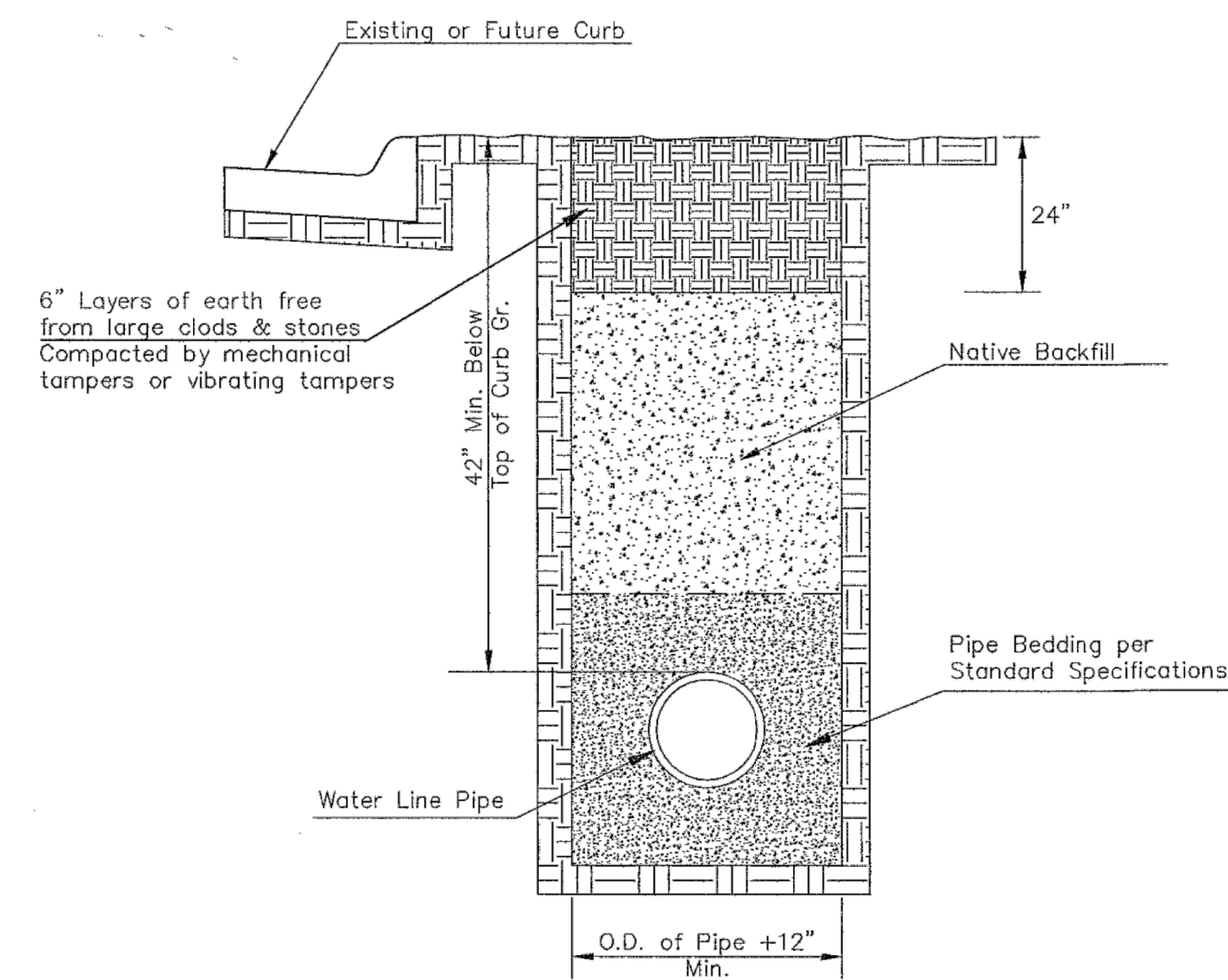
PIPE SIZE	THRUST AT FITTINGS IN TONS-AT 150#/IN <sup>2</sup> P					
	PLUG	90°	45°	22 1/2°	11 1/4°	TEE
6"	2.8	3.95	2.15	1.09	.55	2.8
8"	4.9	6.95	3.75	1.90	.96	4.9
12"	11.4	16.1	8.75	4.45	2.25	11.4
16"	20.15	28.5	15.4	7.85	3.95	20.15
20"	31.15	44.0	23.85	12.15	6.10	31.15
24"	44.55	63.0	34.1	17.4	8.75	44.55

TYPICAL THRUST BLOCKS



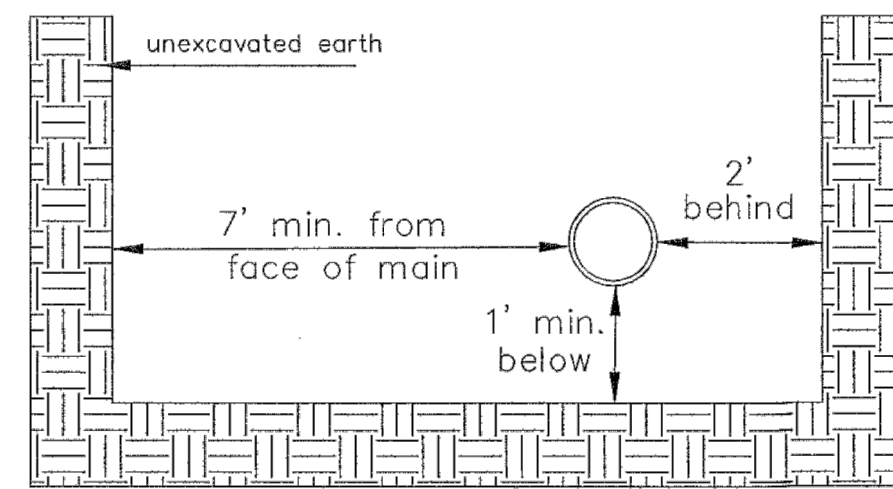
KEY BLOCK DETAIL

\* PLANS GOVERN UNLESS OTHERWISE NOTED ON PLANS



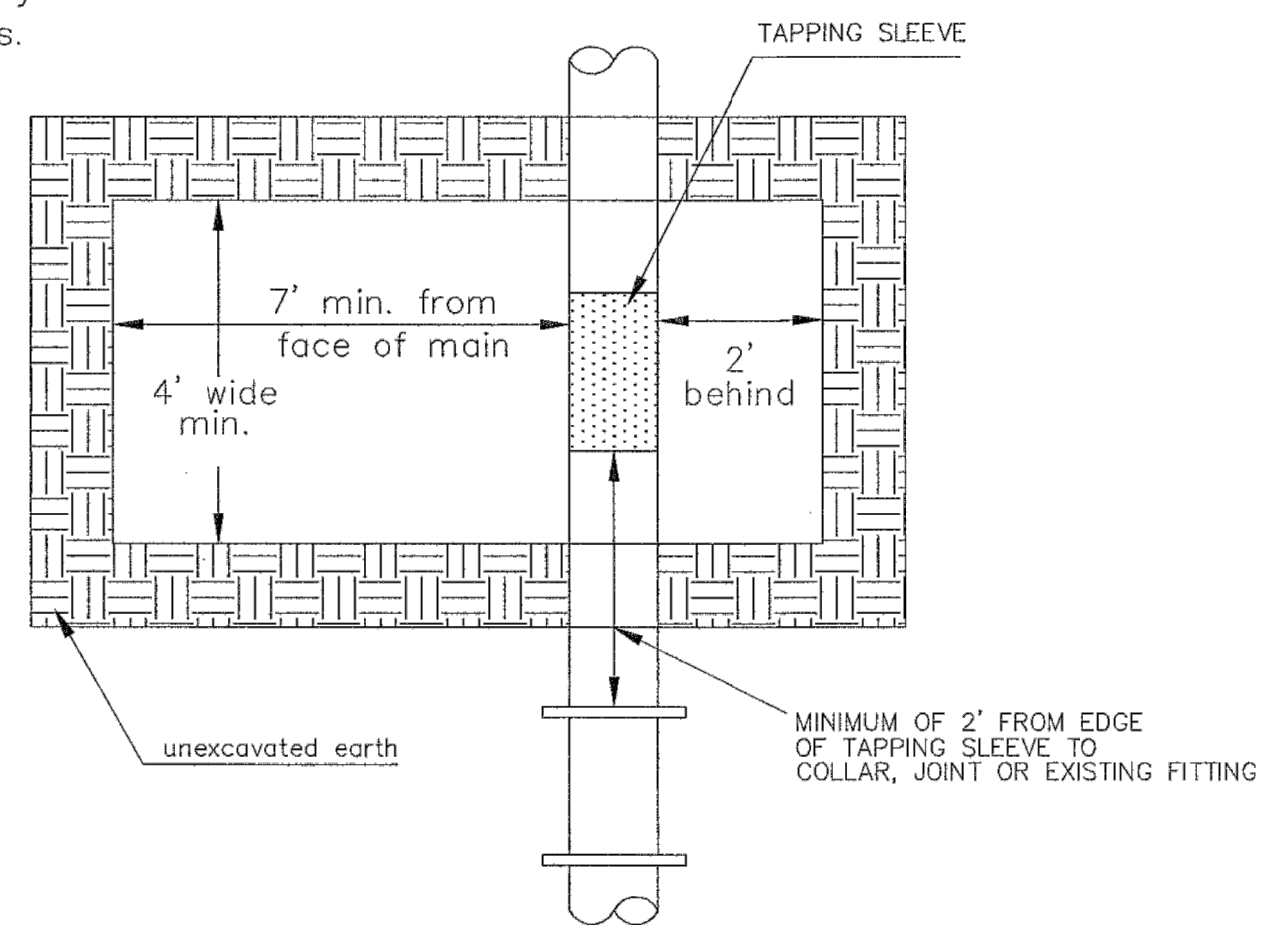
TRENCH COMPACTION IN ROAD RIGHT-OF-WAY

SIDE VIEW

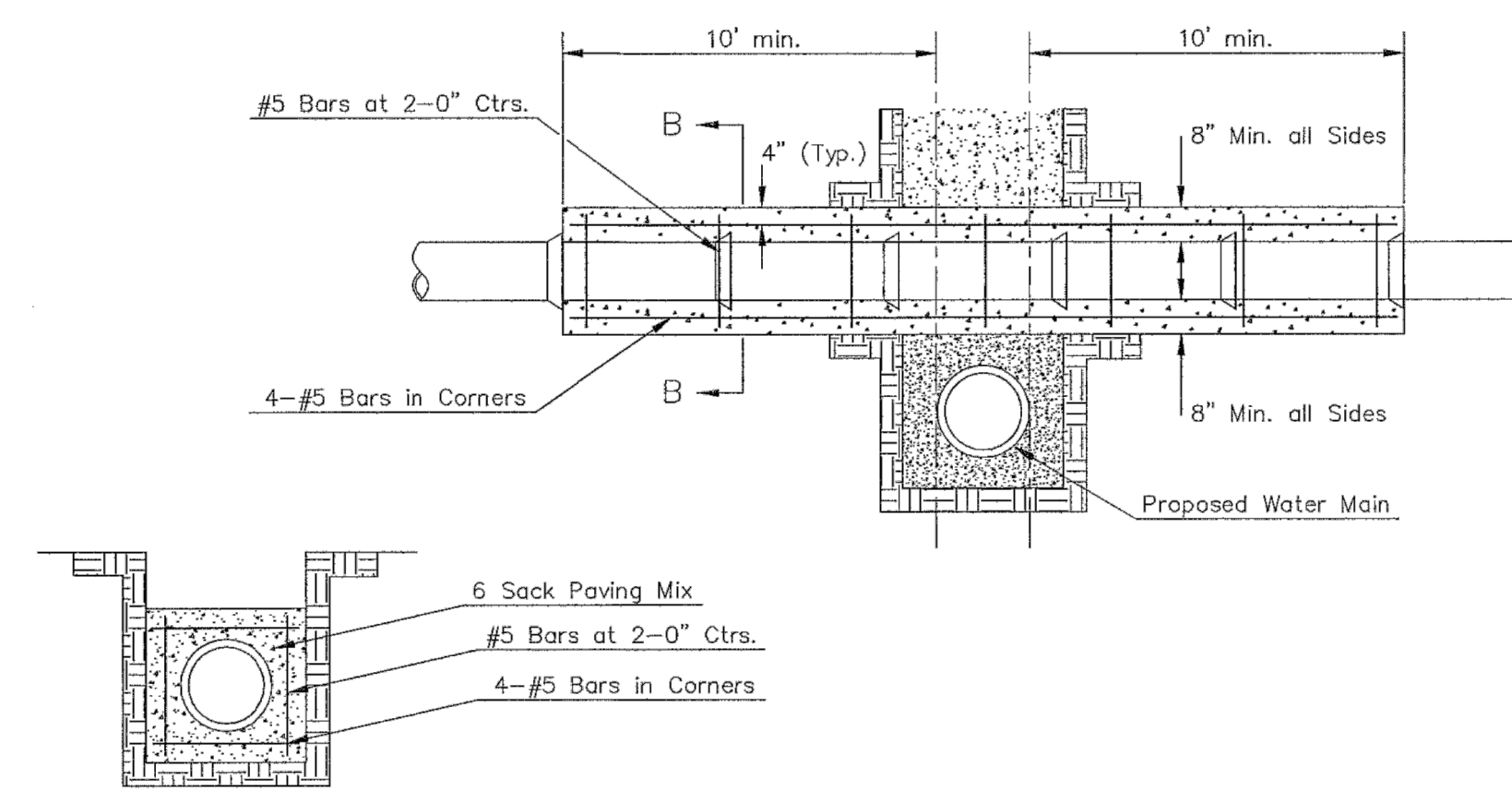


TOP VIEW

Note: When shoring is required it is to be per The City of Wichita Standard Specifications.



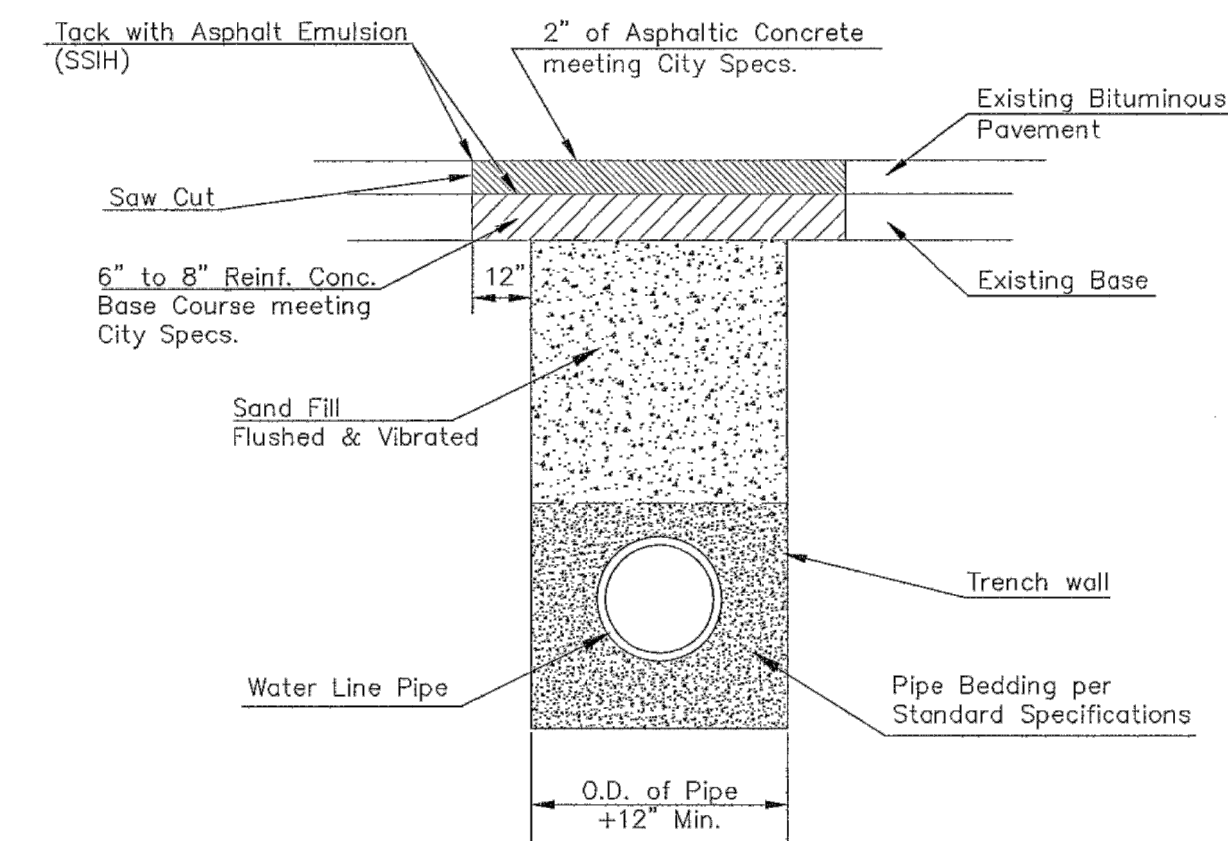
EXCAVATION FOR WET TAP



SECTION B-B

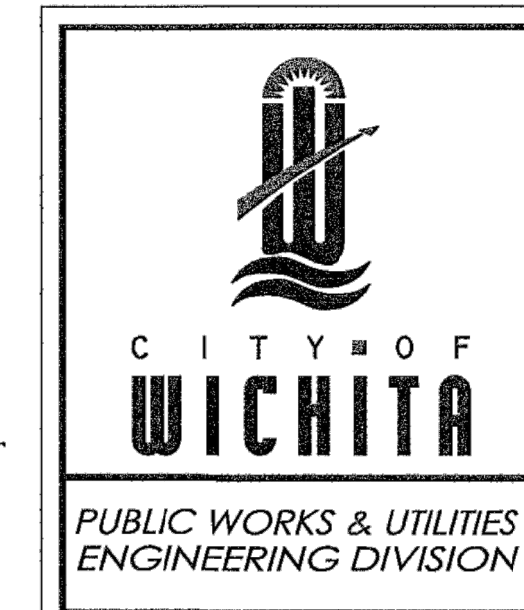
REINFORCED CONCRETE ENCASEMENT OF SANITARY SEWER

Note: Encasement to begin and end at a Bell on Sanitary Sewer Pipe.



PAVEMENT REPLACEMENT & TRENCH COMPACTION UNDER EXISTING AND PROPOSED CITY ROADS

REVISED: JULY 2015



<p>MISCELLANEOUS WATER DETAILS</p> <p>CITY ENGINEER</p> <p>GARY JANZEN, P.E..</p>		
PROJECT NUMBER	OCA NUMBER	DATE
CITY ENGINEER'S OFFICE		SHEET
CITY HALL - SEVENTH FLOOR		
455 NORTH MAIN STREET		
WICHITA, KANSAS 67202-1620		
(316) 268-4501		

WL-104

Environment & Infrastructure Solutions, Inc.  
245 N. WACO AVENUE, SUITE 110  
WICHITA, KANSAS 67202  
PHONE: 316-448-2711  
FAX: 316-448-2711

**wood.**

MISCELLANEOUS WATER DETAILS  
EQUUS WELLFIELD SPURLINE REPLACEMENT - MR20  
GARY JANZEN, P.E. - CITY ENGINEER  
CITY OF WICHITA

DESIGNED BY: EJB  
DRAWN BY: JAN  
CHECKED BY: ---  
DATE: OCTOBER 30, 2020

PROJECT NO.  
639020  
SHEET NO.  
**05**  
OF 9

Last Saved by: alex.mckean Plotted By: Nestleroad, Joseph Plot Date/Time: 10/30/2020 3:36 PM File: L:\8275000373 Wichita Spurline\05\_CAD\Sheets\Bid Package 2\DTL-01.dwg