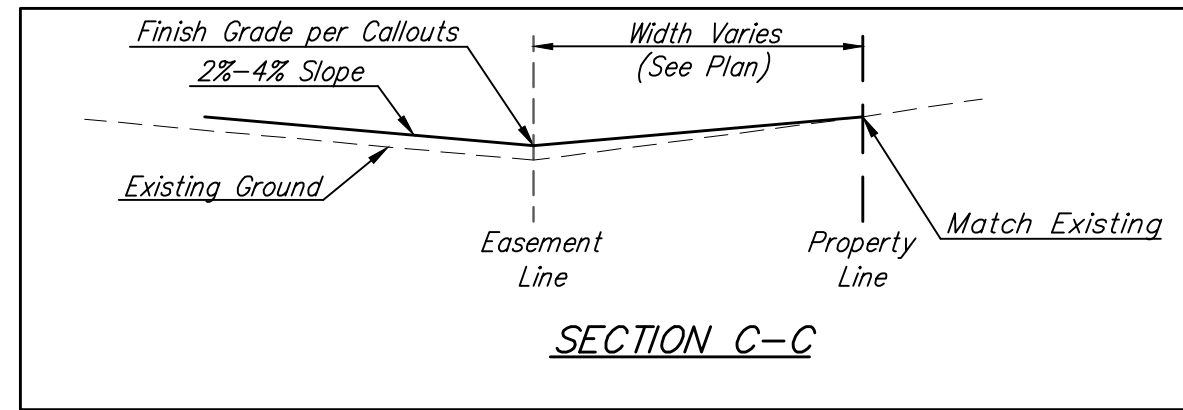
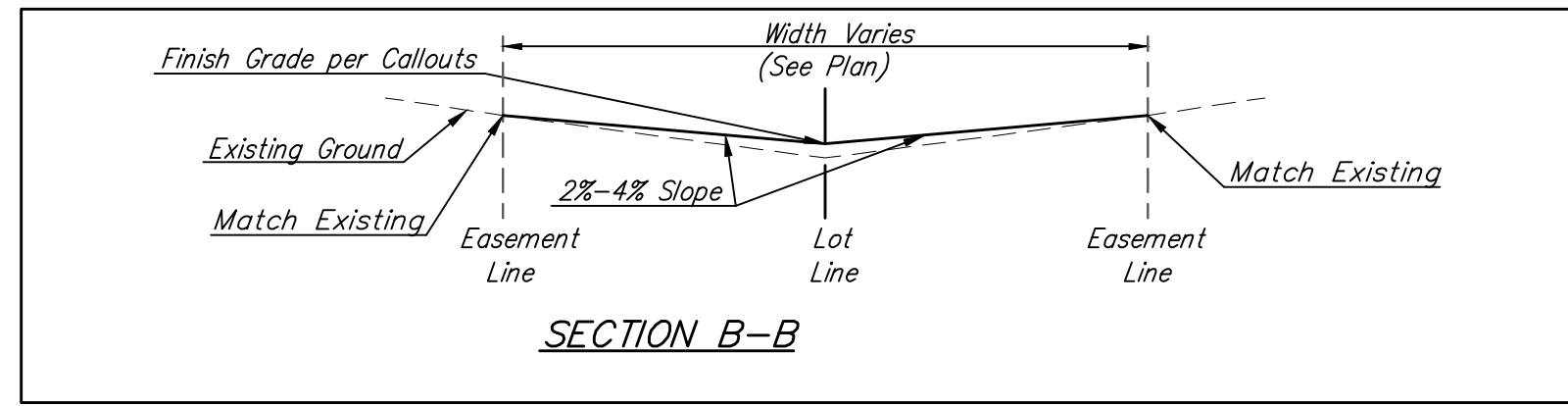
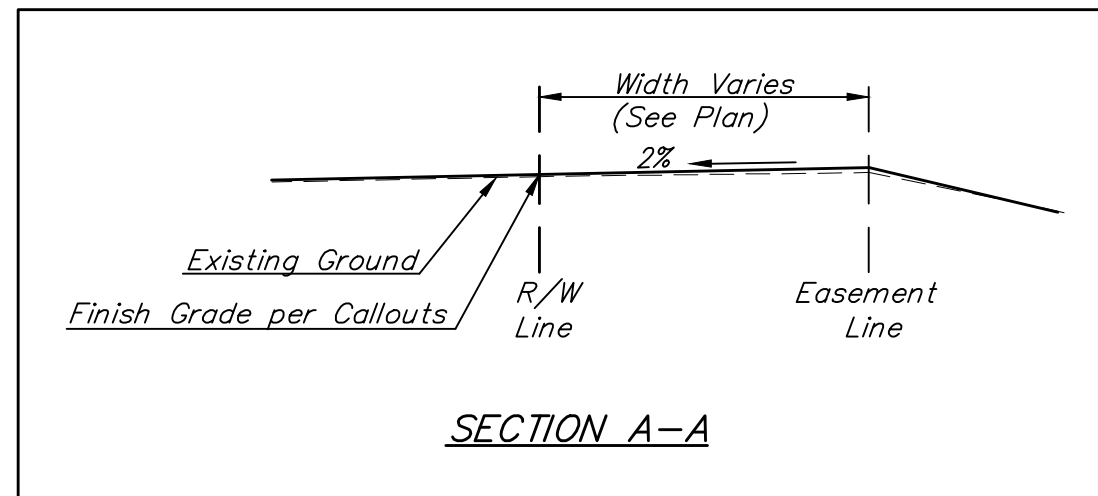
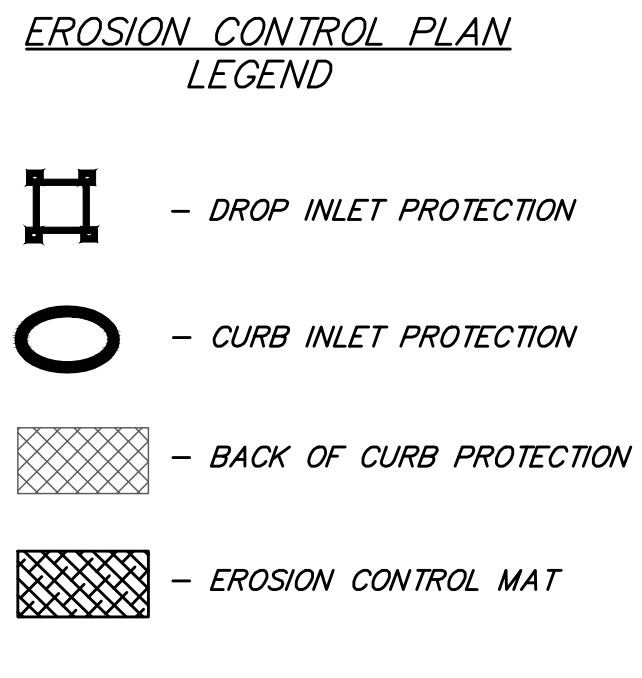


BENCHMARKS:
 BM #1 "□" cut in top of curb inlet face, south side of 26th ST N. 21' west & 12' north of the northeast corner of Lot 13, Block A, Sandcrest 4th Addn. Elev. = 1326.75 NAVD88

BM #2 "□" cut in top of curb northeast of the wheelchair ramp north side of 26th ST N, at the intersection of 26th & Anna ST Elev. = 1325.34 NAVD88

BM #3 "□" cut in top of curb inlet face, East side of Anna ST 21' west & 5' north of the southwest corner of Lot 3, Block C, Sandcrest 4th Addn. Elev. = 1326.68 NAVD88



 = Easements To Be Graded

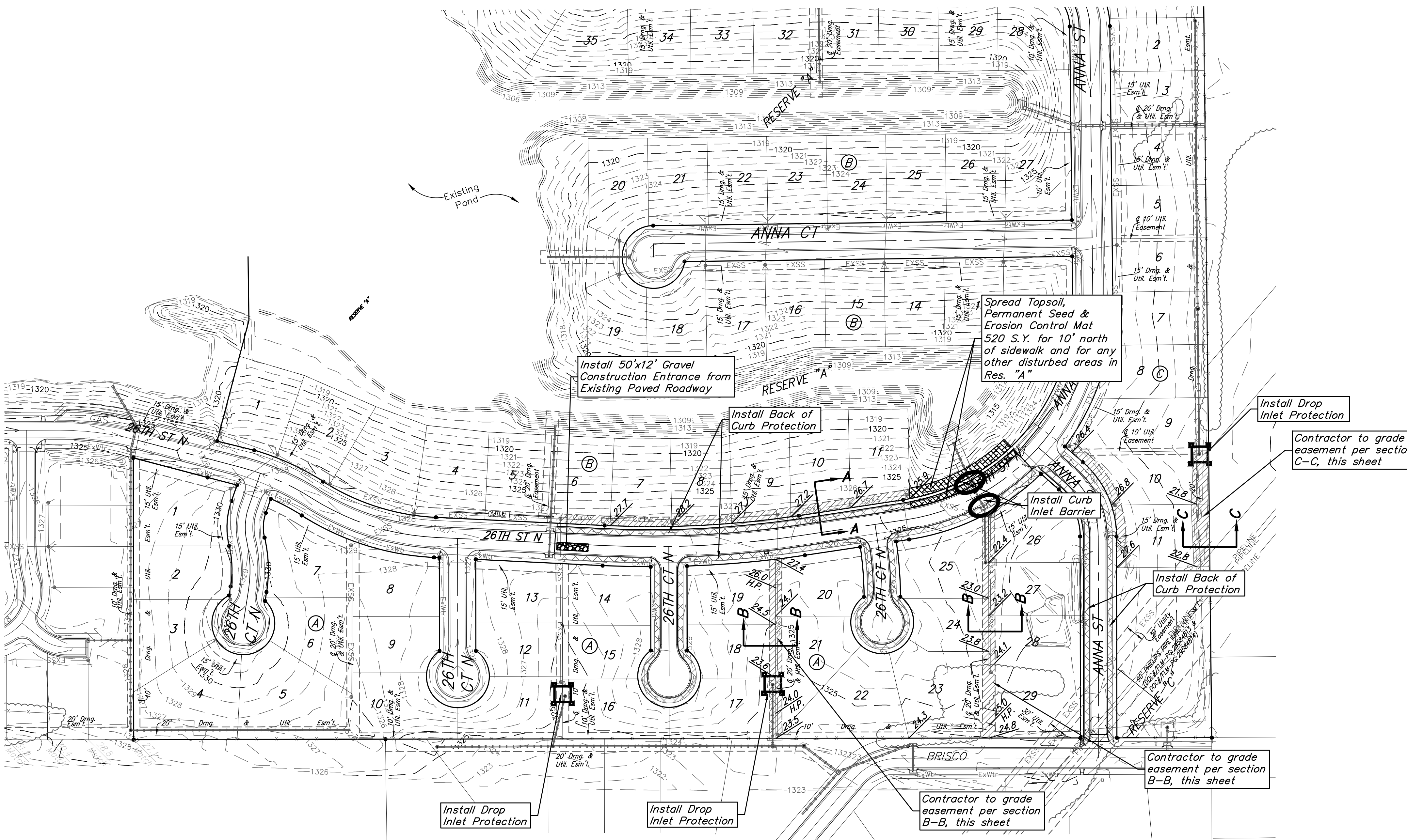
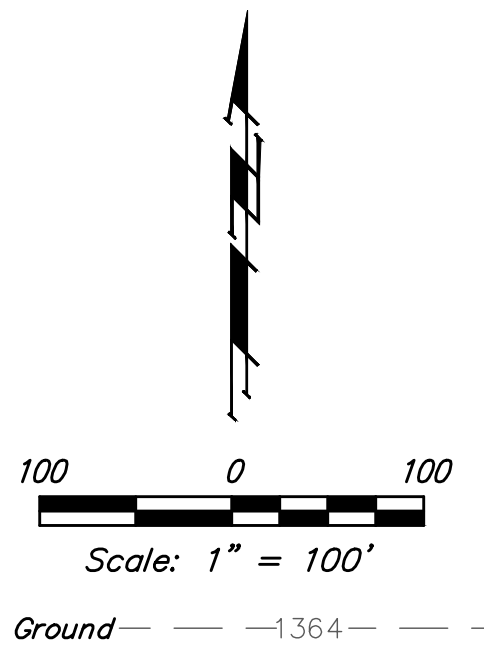
The Contractor shall grade the easements as shown to the elevations given on the easement grading plan.

The Contractor shall 'straight' grade the easements between the elevations given. Where a callout designates 'Match', the Contractor will grade to the existing ground elevation.

Excess excavation from easement grading and from sanitary sewer construction shall be placed on the lots as indicated to the elevations shown.

All cost to be included in the Lump Sum bid item "Easement Grading"

Approximate Easement Grading Quantities:
 (For Information Only)
 Excavation: 180 C.Y.
 Fill: 58 C.Y.



EROSION CONTROL MEASURE	INSTALL	MAINTAIN
BACK OF CURB PROTECTION (LF)	3,114	0
CONSTRUCTION ENTRANCE (EA)	0	1
CURB INLET BARRIER (EA)	2	0
DROP INLET PROTECTION (EA)	3	0
EROSION CONTROL MAT (SY)	520	0
MAINTAIN EROSION CONTROL BMP's (LS)	0	1

* ALL EXISTING BMPs INCLUDING CONSTRUCTION ENTRANCE, SEDIMENT BARRIERS, SILT FENCE, CUT-OFF TRENCH, AND EROSION CONTROL MAT SHALL BE MAINTAINED AND REPAIRED IF NECESSARY.

- NOTES:**
- Contractor shall make sure all erosion control is in place before project is accepted. This plan represents the minimum standard. Any additional erosion control measures shall be installed by the Contractor as needed.
 - Removal of Gravel Construction Entrance for pavement construction shall be included in bid item "Site Clearing"
 - This plan is not to be used as a comprehensive grading plan. All spot elevations are proposed & subject to change.
 - All areas disturbed during construction shall be seeded, mulched, and fertilized as per Cover Sheet General Notes.

Baughman Sandcrest 4th Addition - Phase IV
EROSION CONTROL / EASEMENT GRADING
 Street Improvements

Baughman Company, P.A. 315 Ellis St. Wichita, KS 67211 P 316-262-7271 F 316-262-0149
 ENGINEERING | SURVEYING | PLANNING | LANDSCAPE ARCHITECTURE

PROJECT NUMBER: 472-85459 DESIGN: AEG DRAWN: JAK
 APPROVED: DATE: Nov. 2, 2020
 REVISIONS: SCALE: Noted SHEET: **11 OF 23**

C:\Projects\Sandcrest 4th Addition 1801-P351\Engineering\Phase 4\STR_1910E415\STR PLANS.dwg