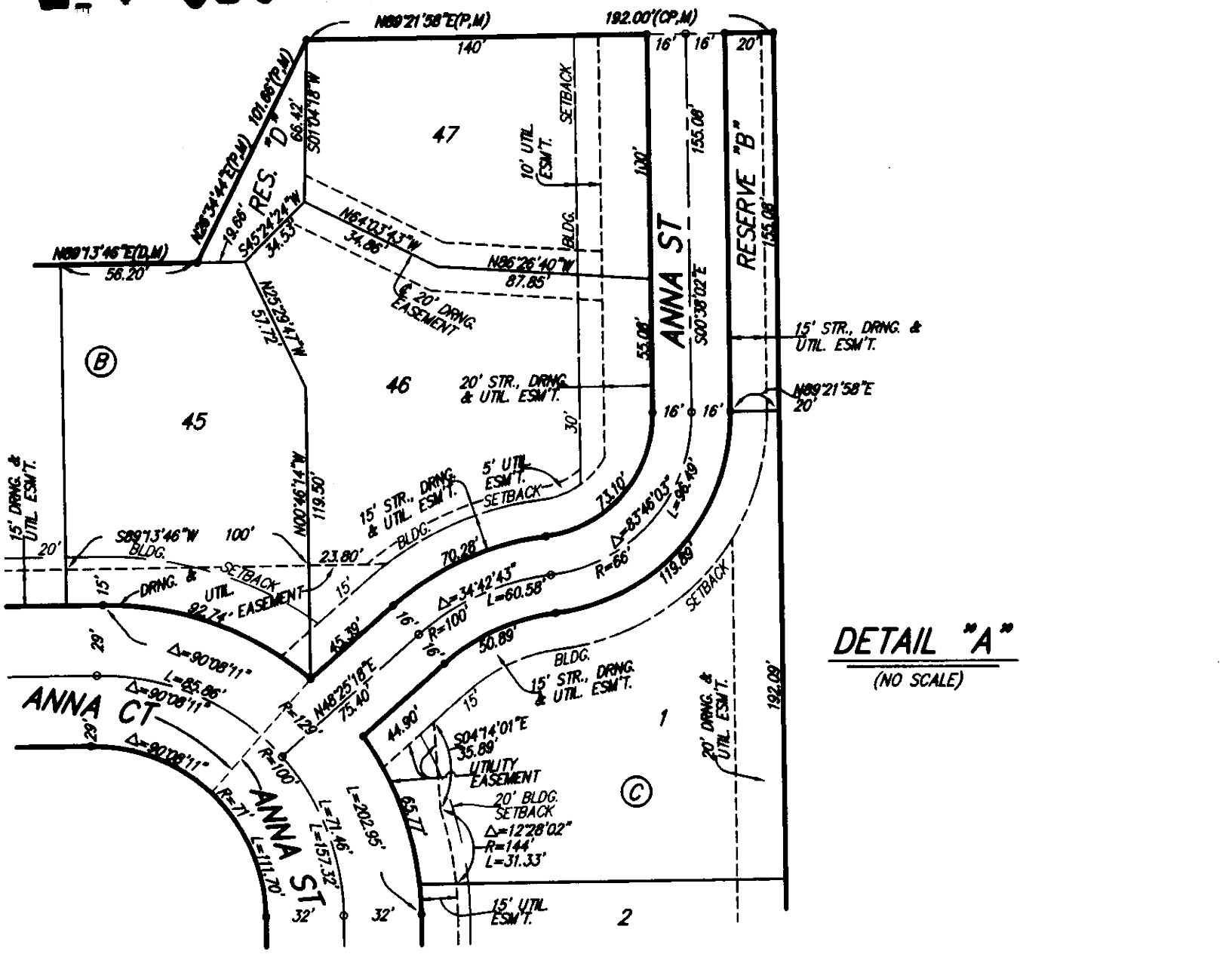


# SANDCREST 4TH

## AN ADDITION TO WICHITA, SEDGWICK COUNTY, KANSAS

Sedgwick County  
 Register of Deeds - Torie Buckingham  
 Doc. # 47111-10 Pg. 28775190  
 Record # 2088274  
 Pages Recorded: 1  
 Recording Fee: \$32.00  
 Author: Shane Buchanan  
 Date Recorded: 06/06/2018 02:21:49 PM



**BENCHMARK:**  
 CITY OF WICHITA BENCHMARK DISK -  
 34.9' S. & 31.2' W. OF THE SW COR.  
 NW 1/4, SEC. 2, TWP. 27-S, R-1-W.  
 ELEV. = 1327.57 NAVD88

CITY OF WICHITA BENCHMARK DISK -  
 26.2' S. & 46.1' W. OF THE NW COR.  
 NW 1/4, SEC. 2, TWP. 27-S, R-1-W.  
 ELEV. = 1330.50 NAVD88

CITY OF WICHITA BENCHMARK DISK -  
 09' E. & 29' N. OF THE NE COR.  
 NW 1/4, SEC. 2, TWP. 27-S, R-1-W.  
 ELEV. = 1325.19 NAVD88

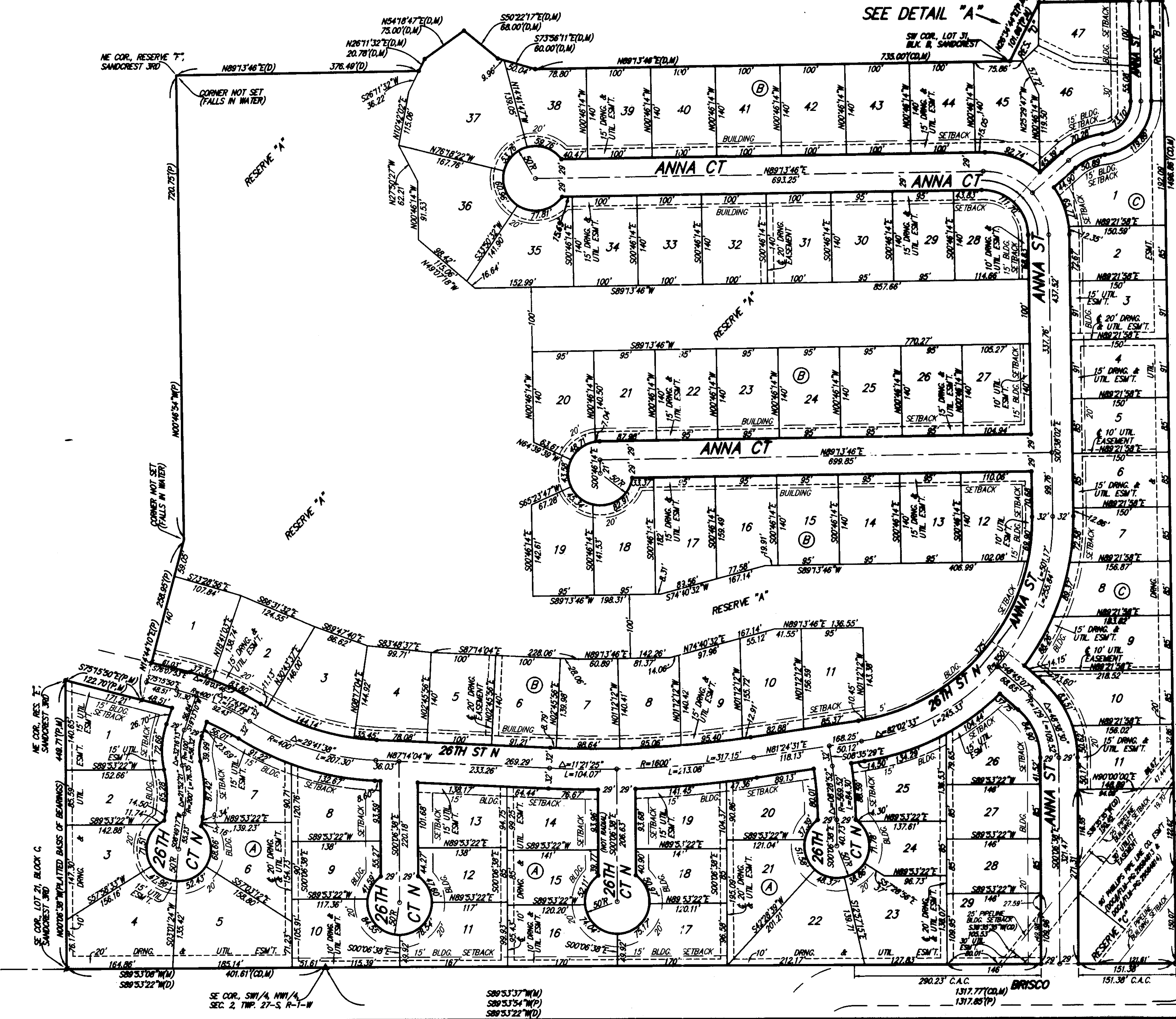
• = #4 REBAR W/ "BAUGHMAN" CAP (SET)  
 ◦ = #4 REBAR W/ "BAUGHMAN" CAP (FOUND)  
 ◊ = 1/2" IRON PIPE (FOUND)(ORIGIN UNKNOWN)  
 △ = 1" IRON PIPE (FOUND)(ORIGIN UNKNOWN)

(M) = MEASURED  
 (D) = DESCRIBED  
 (P) = PLATTED  
 (C) = CALCULATED PER DESCRIBED INFO.  
 (CP) = CALCULATED PER PLATTED INFO.

MINIMUM BUILDING PAD ELEVATIONS FOR LOWEST OPENING TO THE STRUCTURES

LOT	BLOCK	ELEVATION NAVD88
1-47	B	1322.0

C.A.C. = COMPLETE ACCESS CONTROL



State of Kansas) SS We, Baughman Company, P.A., Surveyors in aforesaid county and state do hereby certify that we have surveyed and platted "SANDCREST 4TH", an Addition to Wichita, Sedgwick County, Kansas and that the accompanying plat is a true and correct exhibit of the property surveyed, described as follows: That part of the Southwest Quarter of the Northwest Quarter and that part of the Southeast Quarter of the Northwest Quarter of Section 2, Township 27-South, Range 1 West of the Sixth Principal Meridian, Sedgwick County, Kansas, together with that part of Government Lots 3 and 4 in said Northwest Quarter described as follows: Beginning at the southeast corner of Sandcrest 3rd, an Addition to Wichita, Sedgwick County, Kansas, said southeast corner also being on the south line of the Southwest Quarter of said Northwest Quarter, thence N00°06'38"W along the east line of Block C and along the east line of Reserve "E" in said Sandcrest 3rd, 449.71 feet to the northeast corner of said Reserve "E", said northeast corner also being a point on the south right-of-way line of 26th St N as dedicated in said Sandcrest 3rd; thence S75°15'50"E along the south right-of-way line of said 26th St N, 122.70 feet to the southeast corner of said 26th St N; thence N14°44'10"E along the east line of said 26th St N and along the most southerly segment of the east line of Reserve "E" in said Sandcrest 3rd, 258.85 feet to a deflection corner in the east line of said Reserve "E"; thence N00°46'54"W along the most northerly segment of the east line of said Reserve "E", 720.75 feet to the northeast corner of said Reserve "E", said northeast corner also being a point on the south line of Reserve "J" as platted in Sandcrest, an Addition to Wichita, Sedgwick County, Kansas; thence N89°13'46"E along the south line of said Reserve "J", 1291.63 feet to the southeast corner of said Reserve "J", said southeast corner also being the southwest corner of Lot 31, Block B, in said Sandcrest; thence continuing N89°13'46"E along the south line of said Lot 31, 90.46 feet to a deflection corner in said south line; thence S63°56'40"E along the south line of said Lot 31, 58.80 feet to the most southerly southeast corner of said Lot 31, said most southerly southeast corner also being a point on the southwest right-of-way line of Wavcrest Cir as dedicated in said Sandcrest; thence southerly, southeasterly, and easterly along said southwest right-of-way line, being a non-tangent curve to the left, through a central 102°25'55" and a radius of 40.00 feet, an arc distance of 71.51 feet, (having a chord length of 62.36 feet bearing S43°43'09"E), to the intersection with a deflection corner in the west line of Reserve "J" as platted in said Sandcrest; thence S00°38'02"E along a segment of the west line of said Reserve "J", 156.43 feet to the most southerly southwest corner of said Reserve "J"; thence S90°00'00"E along the south line of said Reserve "J", 52.00 feet to the southeast corner of said Reserve "J", said southeast corner also being a point on the east line of said Northwest Quarter; thence S00°38'02"E along the east line of said Northwest Quarter, 1177.26 feet to the southeast corner of said Northwest Quarter; thence S89°53'22"W along the south line of said Northwest Quarter, 1718.38 feet to the point of beginning, TOGETHER with all of Lot 31, Block B, in said Sandcrest, TOGETHER with that part of said Wavcrest Cir and that part of said Reserve "J" lying south of and abutting the following described line: Beginning at the northeast corner of said Lot 31; thence N89°21'58"E along prolongation of the north line of said Lot 31, 52.00 feet to a point on the east line of said Reserve "J", and for a point of termination, and TOGETHER with that part of said Reserve "J" described as follows: Commencing at the northeast corner of Reserve "E" in said Sandcrest 3rd, said northeast corner also being a point on the south line of said Reserve "J"; thence N89°13'46"E along the south line of said Reserve "J", 376.49 feet for a point of beginning; thence N26°11'32"E, 20.78 feet; thence N54°16'47"E, 75.00 feet; thence S50°22'17"E, 68.00 feet; thence S73°56'11"E, 60.00 feet to a point on the south line of said Reserve "J"; thence S89°13'46"W along the south line of said Reserve "J", 178.63 feet to the point of beginning. Existing public easements, building setbacks, access controls, and dedications, if any, being vacated by virtue of K.S.A. 12-512b, as amended.

All being situated in the Northwest Quarter of Section 2, Township 27 South, Range 1 West of the Sixth Principal Meridian, Sedgwick County, Kansas.

Baughman Company, P.A.

**Michael G. Conroy**  
 Michael G. Conroy, Surveyor  
 License # 18-971

The undersigned, have caused the land in the surveys certificate to be platted into Lots, Blocks, Streets, and Reserves to be known as "SANDCREST 4TH", an Addition to Wichita, Sedgwick County, Kansas. The utility easements are hereby granted as indicated for the construction and maintenance of all public utilities. The drainage easements are hereby granted as indicated for drainage purposes. The drainage and utility easements are hereby granted as indicated for drainage purposes and for the construction and maintenance of all public utilities. No signs, light poles, private drainage systems, masonry trash enclosures or other structures shall be located within public utility easements unless permitted by the Public Works Department of the appropriate governing body. The streets are hereby dedicated to and for the use of the public. Access controls shall be as depicted on the face of the plat and are hereby granted to the City of Wichita, Kansas. Reserves "A" and "D" are hereby reserved for open space, landscaping, berms, lakes, parking, recreational water activities and related appurtenances, boat docks and ramps, playgrounds, drainage purposes, sidewalks, hike and bike trails, recreational areas, gazebos, and utilities as confined to easements. Reserve "B" is hereby reserved for open space, landscaping, berms, drainage purposes, streets as confined to easement, and utilities as confined to easement. Reserve "C" is hereby reserved for open space, landscaping, berms, drainage purposes, gazebos, playground, sidewalks, pipelines as confined to easement, and utilities as confined to easement. Reserves "A", "B", "C", and "D" shall be owned and maintained by the homeowners' association for the addition. The Minimum Building Pad Elevations for the lowest opening to the structures shall be as indicated on the face of the plat.

Sandcrest, LLC, a Kansas limited liability company 1/1/18  
 RSRWHP, LLC, a Kansas limited liability company

**JOY W. RUSSELL**  
 Joy W. Russell, President of J. Russell Development and Management, Inc.

This plat of "SANDCREST 4TH", an Addition to Wichita, Sedgwick County, Kansas has been submitted to and approved by the Wichita-Sedgwick County Metropolitan Area Planning Commission, Wichita, Kansas.  
 Dated this 26 day of March, 2018.  
 Wichita-Sedgwick County Metropolitan Area Planning Commission

**SEAL**  
 WICHITA SEDGWICK COUNTY METROPOLITAN AREA PLANNING COMMISSION  
 KANSAS

Joseph A. Johnson, Chairman  
 Dale Miller, Secretary  
 Dale Miller

This plat approved and all dedications shown hereon prepared by the City Council of the City of Wichita, Kansas, this 26th day of March, 2018.

Jeff Longwell, Mayor, City of Wichita  
 Jeff Longwell  
 Karen Sublett, City Clerk  
 Karen Sublett

Revised in accordance with K.S.A. 58-2005 on this 27th day of March, 2018.

**PS-1246**  
 TRICIA L. ROBALLO  
 Tricia L. Roballo, PS #1246  
 Deputy County Surveyor  
 Sedgwick County, Kansas

Entered on transfer record this 6th day of June, 2018.

**MSC**  
 Kaly B. Arnold

State of Kansas) SS This is to certify that this plat has been filed for record in the office of the Register of Deeds, this 6th day of June, 2018 at 10:00 a.m. and is duly recorded.

Torie Buckingham, Register of Deeds  
 Torie Buckingham  
 Judy J. Popel, Deputy

We, the undersigned holders of mortgages on the above described property, do hereby consent to this plat of "SANDCREST 4TH", an Addition to Wichita, Sedgwick County, Kansas.  
 Emprise Bank

LORI J. NEWELL, SR. Vice President  
 LORI J. NEWELL 4/26/18

State of Kansas) SS The foregoing instrument acknowledged before me, this 26th day of March, 2018, by Shane Buchanan, Secretary of Emprise Bank, on behalf of the bank.

KARLA S. WILDEMAN, Notary Public  
 My App'l. Exp. 2/25/20  
 KARLA S. WILDEMAN, Notary Public  
 My App'l. Expires 11-7-21

State of Kansas) SS The foregoing instrument acknowledged before me, this 26th day of March, 2018, by Jay W. Russell, President of J. Russell Development and Management, Inc., Manager of Sandcrest, LLC, a Kansas limited liability company, 1/1/18 RSRWHP, LLC, a Kansas limited liability company, on behalf of the limited liability company.

JUDITH M. TERHUNE, Notary Public  
 My App'l. Expires 11-7-21  
 JUDITH M. TERHUNE, Notary Public  
 My App'l. Exp. 11-7-21