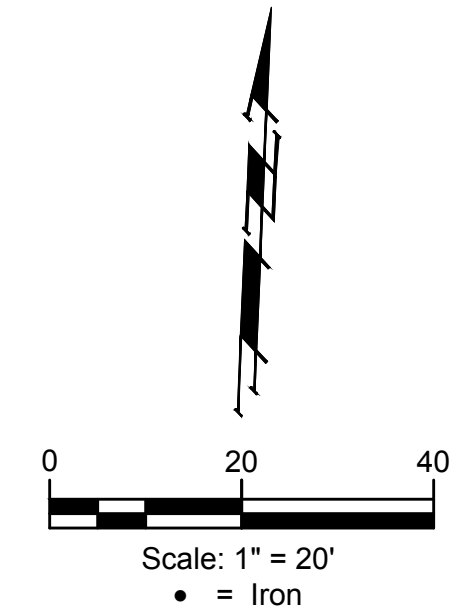


BENCHMARKS:
 BM #1 "□" cut in top of curb inlet face, south side of 26th ST N. 21' west & 12' north of the northeast corner of Lot 13, Block A, Sandcrest 4th Addn. Elev. = 1326.75 NAVD88

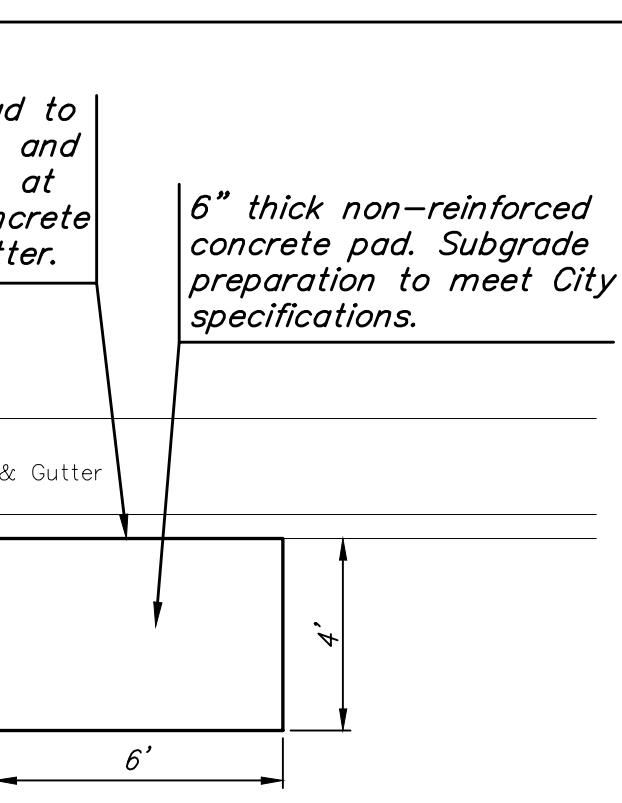
BM #2 "□" cut in top of curb northeast of the wheelchair ramp north side of 26th ST N. at the intersection of 26th & Anna ST. Elev. = 1325.34 NAVD88

BM #3 "□" cut in top of curb inlet face, East side of Anna ST 21' west & 5' north of the southwest corner of Lot 3, Block C, Sandcrest 4th Addn. Elev. = 1326.68 NAVD88



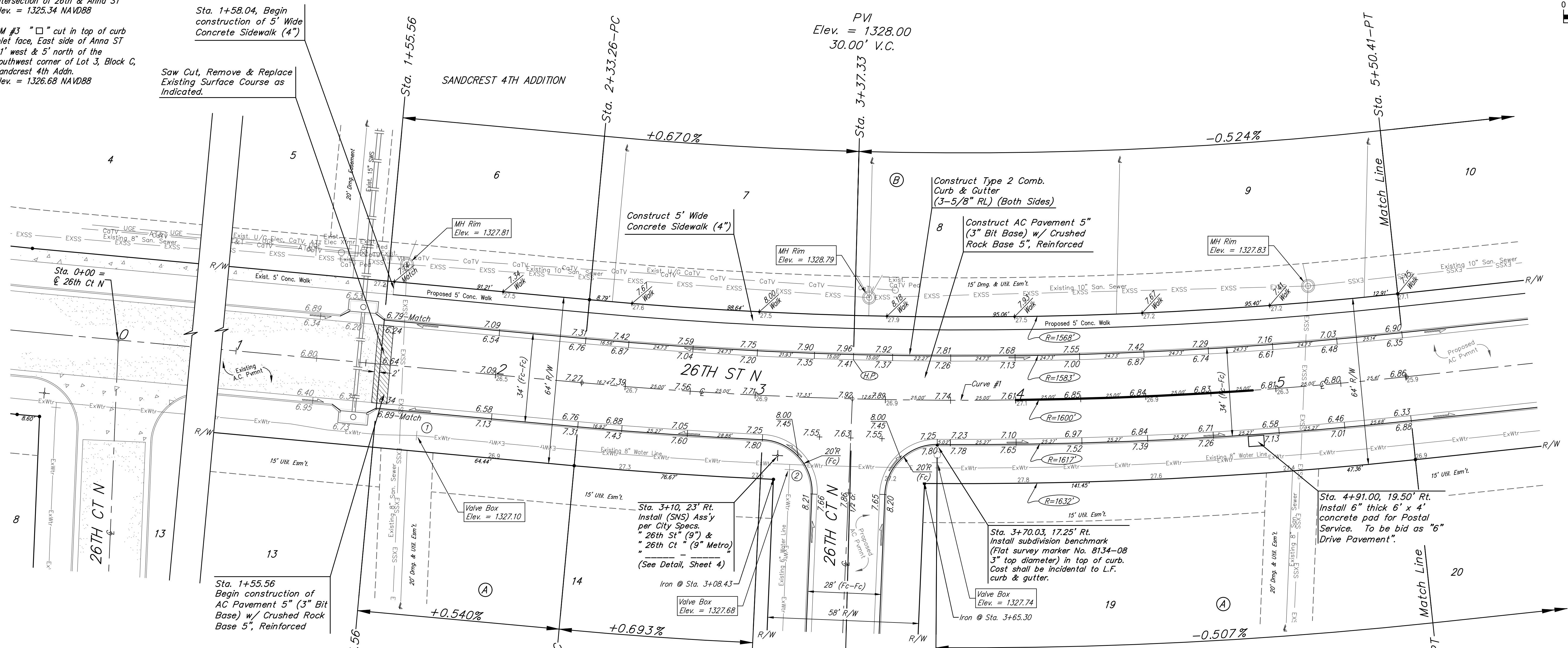
Sta. 1+58.04, Begin construction of 5' Wide Concrete Sidewalk (4")
 Saw Cut, Remove & Replace Existing Surface Course as Indicated.

Sta. 1+55.56 Begin construction of AC Pavement 5" (3" Bit Base) w/ Crushed Rock Base 5", Reinforced



US Postal Service Pad Detail
 To be bid as "6" Drive Pavement".

Roll type curb & gutter to be constructed on the pavement on this sheet. Top of curb elevation are given for full height curb.



Curve #1
 Curve Data Based on Centerline
 Rad. = 1600' Delta = 11'21"25" Tangent = 159.09'
 Arc = 317.15' L.C. = 316.63' Def./Ft. = 1.07428 Min.

Station	Arc	Face Chord Lengths		Defl.	Total Defl.
		8' Left	8' Right		
2+33.26	-	-	-	0'00"00"	0'00"00"
2+50.00	16.74'	16.48'	17.00'	0'17"59"	0'17"59"
2+75.00	25.00'	24.61'	25.39'	0'26"51"	0'44"50"
3+00.00	25.00'	24.61'	25.39'	0'26"52"	1'11"42"
3+03.56	3.56'	3.50'	3.62'	0'03"49"	1'15"31"
3+25.00	21.44'	21.10'	21.77'	0'23"02"	1'38"33"
3+50.00	25.00'	24.61'	25.39'	0'26"52"	2'05"25"
3+70.03	20.03'	19.72'	20.34'	0'21"31"	2'26"56"
3+75.00	4.97'	4.89'	5.05'	0'05"20"	2'32"16"
4+00.00	25.00'	24.61'	25.39'	0'26"52"	2'59"08"
4+25.00	25.00'	24.61'	25.39'	0'26"51"	3'25"59"
4+50.00	25.00'	24.61'	25.39'	0'26"51"	3'52"50"
4+75.00	25.00'	24.61'	25.39'	0'26"52"	4'19"42"
5+00.00	25.00'	24.61'	25.39'	0'26"51"	4'46"33"
5+25.00	25.00'	24.61'	25.39'	0'26"52"	5'13"25"
5+50.00	25.00'	24.61'	25.39'	0'26"51"	5'40"16"
5+50.41	0.41'	0.40'	0.42'	0'00"26"	5'40"42"

Baughman Sandcrest 4th Addition - Phase IV
26TH ST NORTH
 Sta. 1+58.04 to Sta. 5+50.41

Baughman Company, P.A. 315 Ellis St. Wichita, KS 67211 P 316-262-7271 F 316-262-0149
 ENGINEERING | SURVEYING | PLANNING | LANDSCAPE ARCHITECTURE

PROJECT NUMBER: 472-85459
 DESIGN: AEG
 DRAWN: JAK
 APPROVED: [Signature]
 DATE: Nov. 2, 2020

REVISIONS:

SCALE: Noted
 SHEET: **5 OF 23**