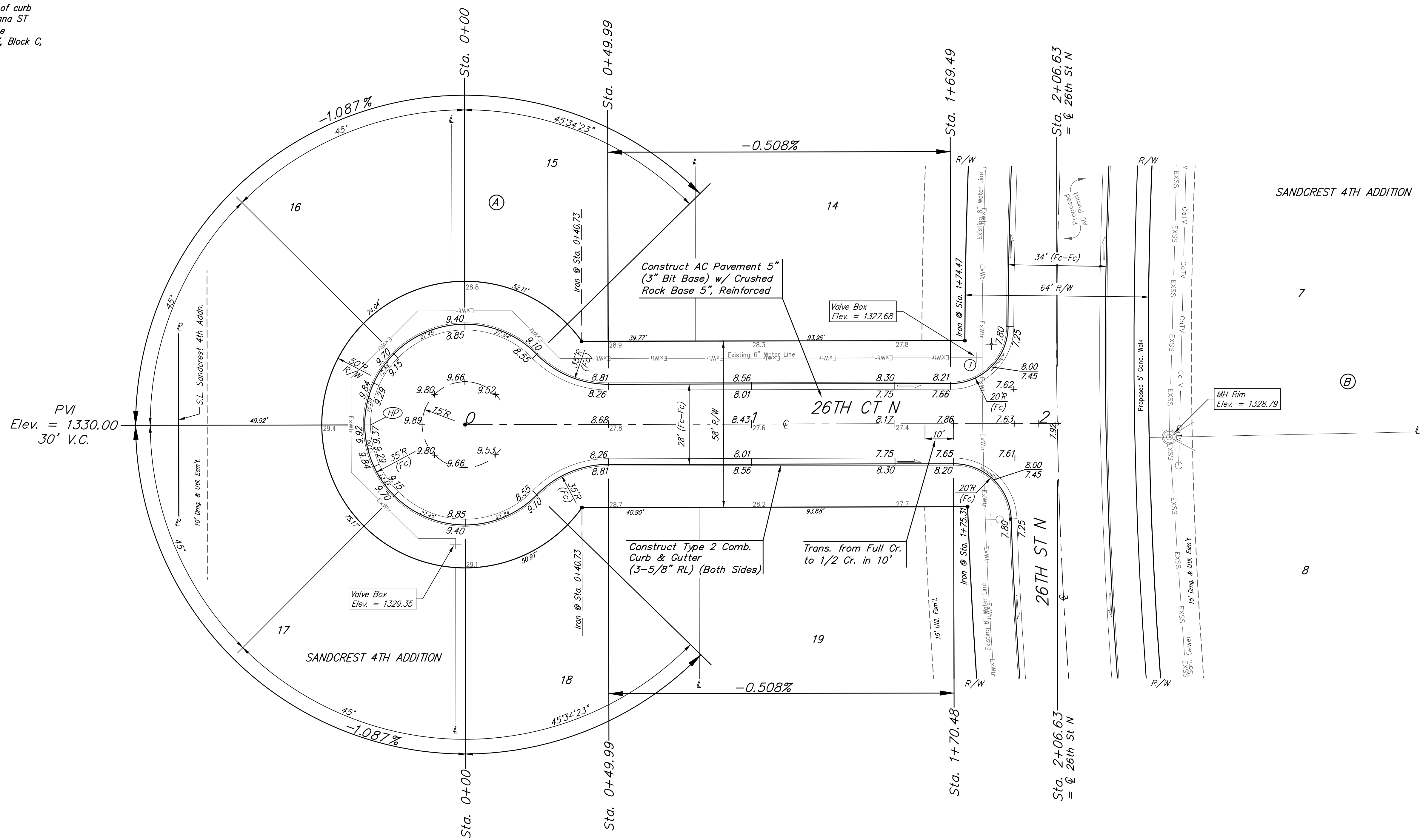
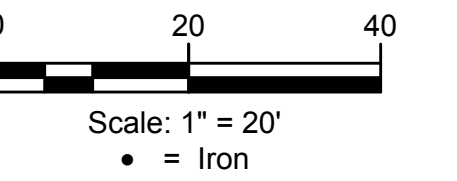


BENCHMARKS:
 BM #1 "□" cut in top of curb inlet face, south side of 26th ST N. 21' west & 12' north of the northeast corner of Lot 13, Block A, Sandcrest 4th Addn. Elev. = 1326.75 NAVD88

BM #2 "□" cut in top of curb northeast of the wheelchair ramp north side of 26th ST N. at the intersection of 26th & Anna ST. Elev. = 1325.34 NAVD88

BM #3 "□" cut in top of curb inlet face, East side of Anna ST 21' west & 5' north of the southwest corner of Lot 3, Block C, Sandcrest 4th Addn. Elev. = 1326.68 NAVD88



SANDCREST 4TH ADDITION

7

8

Roll type curb & gutter to be constructed on the pavement on this sheet. Top of curb elevation are given for full height curb.

	Sandcrest 4th Addition - Phase IV	
	26TH ST NORTH Lots 14-19, Block A	
<small>Baughman Company, P.A. 315 Ellis St. Wichita, KS 67211 P 316-262-7271 F 316-262-0149 ENGINEERING SURVEYING PLANNING LANDSCAPE ARCHITECTURE</small>		
PROJECT NUMBER 472-85459	DESIGN AEG	DRAWN JAK
REVISIONS:	APPROVED DATE Nov. 2, 2020	SCALE Noted SHEET
		7 OF 23
<small>C:\Projects\Sandcrest 4th Addition_1801-F351-Engineering\Phase 4\STR_1910-E415\STR PLANS.dwg</small>		