

N: 385,118.2250, E: 2,374,045.2530
 SS Line No. 1, Sta. 0+00.00
 Existing MH
 Construct outside drop connection.
 Core existing concrete MH wall
 and install new 8" pipe. Seal new
 8" pipe to MH with an approved
 waterstop gasket and non-shrink
 grout. Reshape MH floor to provide
 smooth flow. This work shall be
 considered subsidiary to the price
 bid for pipe in place.

CAUTION !!!
 Buried CATV
 (Cox Communications)

N: 385,123.3306, E: 2,374,005.5802
 SS Line No. 1, Sta. 0+40.00
 Const. MH 1
 Standard MH

CAUTION !!!
 Buried Electric
 (Evergy)

N: 385,151.9101, E: 2,373,976.2262
 SS Line No. 1, Sta. 0+80.97
 Const. MH 2
 Standard MH

N: 385,150.2251, E: 2,373,850.1790
 SS Line No. 1, Sta. 2+07.03
 Const. MH 3
 Standard MH

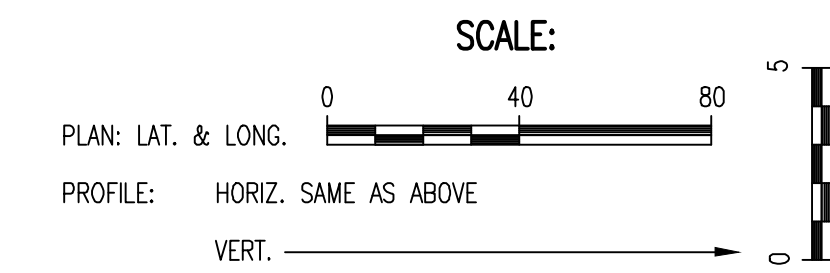
LINE NO. 2
 See sheet no. C108

N: 385,127.7161, E: 2,373,570.7306
 SS Line No. 1, Sta. 4+89.95
 Const. MH 5
 Standard MH (5' Dia.)

N: 385,127.2291, E: 2,373,775.8225
 SS Line No. 1, Sta. 2+84.86
 Const. MH 4
 Standard MH (5' Dia.)

N: 385,157.7969, E: 2,373,431.6770
 SS Line No. 1, Sta. 6+32.22
 Const. MH 6
 Standard MH (5' Dia.)

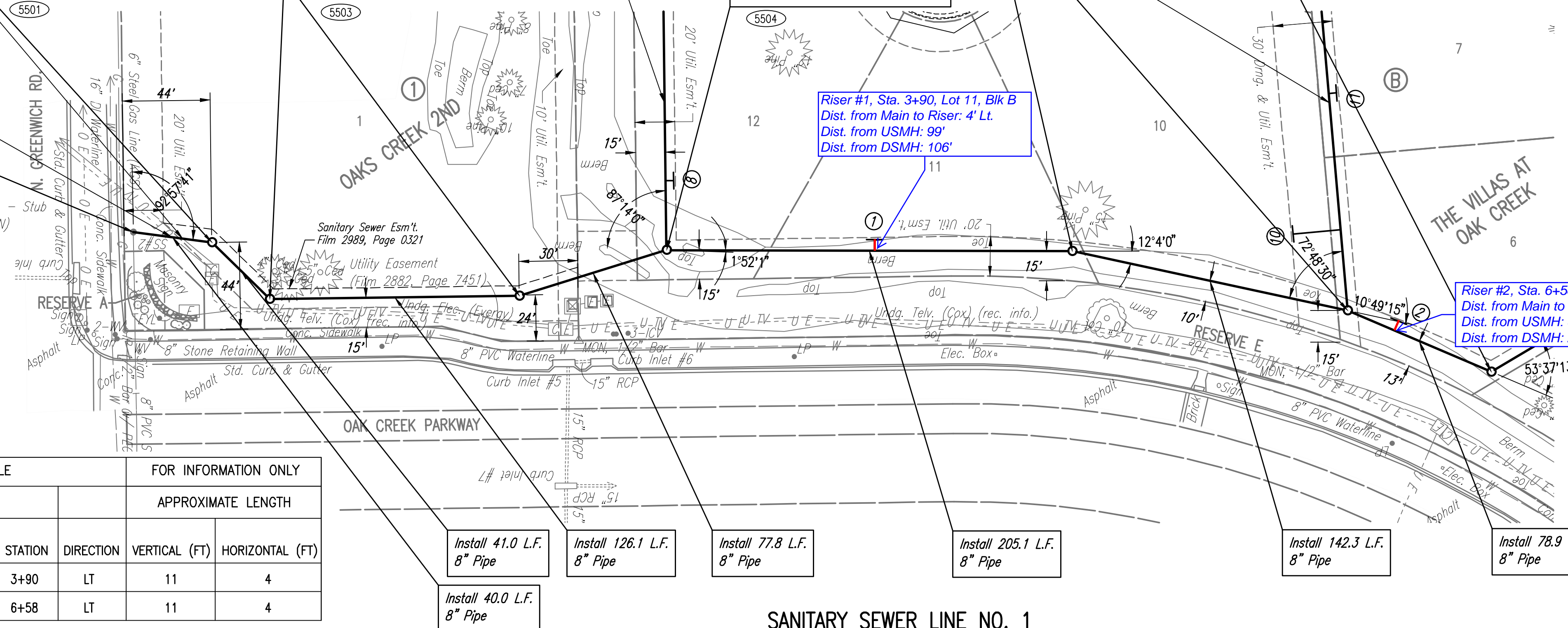
N: 385,188.6614, E: 2,373,359.0404
 SS Line No. 1, Sta. 7+11.14
 Const. MH 7
 Standard MH (5' Dia.)
 Match Point



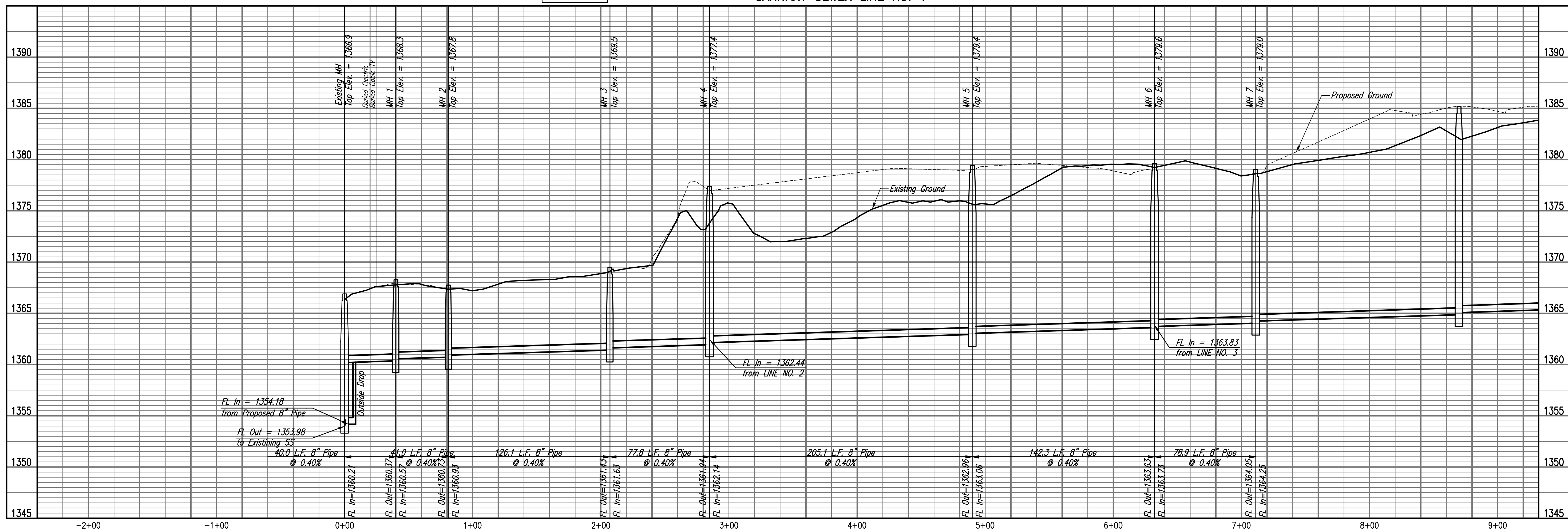
5500 - SEE SHEET NO. C104 FOR SANITARY SEWER COORDINATES (TYP.)

① = DENOTES SEWER SERVICE.
 SEE THIS SHEET FOR SEWER SERVICE SCHEDULE
 AND SHEET NO. C113 FOR DETAILS.

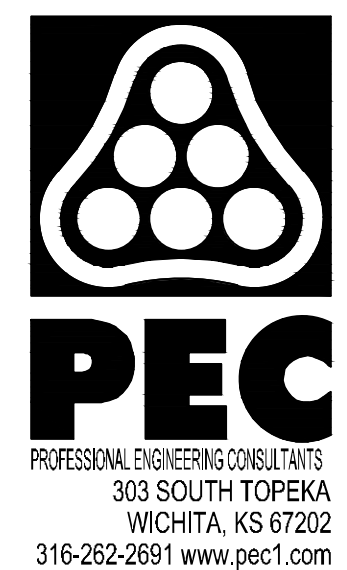
SS#2
 Pre-Cast Conc. MH
 Top = 1366.92
 In = 1354.01 8" PVC (S) - Stub
 Out = 1353.98 8" PVC (N)



NUMBER	TYPE	LOCATION					FOR INFORMATION ONLY	
		LOT NO.	BLOCK NO.	LINE NO.	STATION	DIRECTION	VERTICAL (FT)	HORIZONTAL (FT)
1	4" TEE	11	B	1	3+90	LT	11	4
2	4" TEE	6	B	1	6+58	LT	11	4



Sheet 11 of 15 - 2019, 8/13/21 AM by KURTIS DEKAT
 Proj. Name: 151-15-2019-1106-41 - SANITARY SEWER
 U:\Wichita-Civil\2017\170555\022\Main\Drawings\170555-002-C105 SANITARY SEWER LINE NO. 1

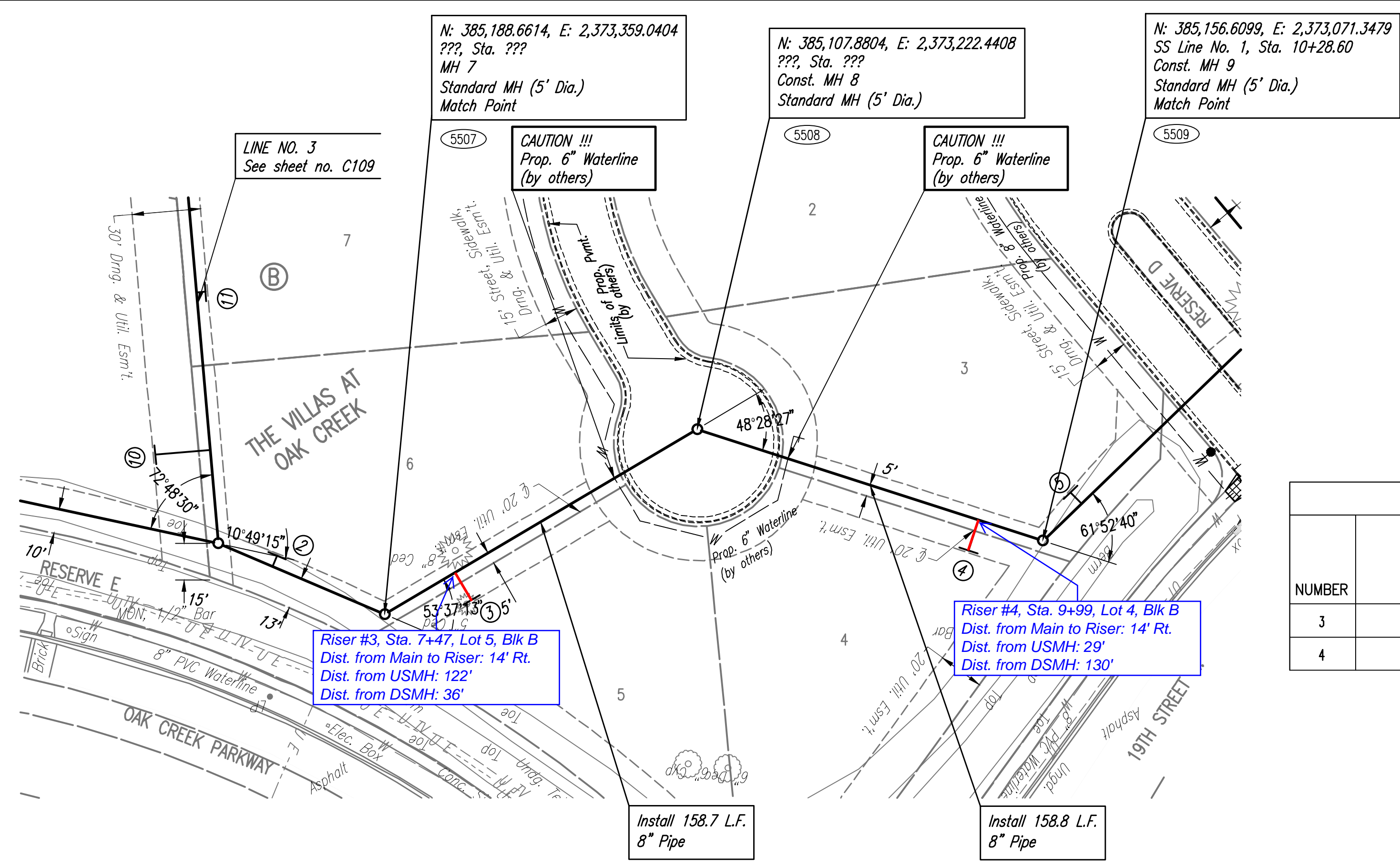


SANITARY SEWER IMPROVEMENTS TO SERVE THE VILLAS AT OAK CREEK
 GARY JANZEN, P.E. - CITY ENGINEER
 CITY OF WICHITA PROJECT NO. 468-2019-017980

Issue:	
JOB NO.	35-170551-002-0042
DATE	OCTOBER 2019
PM	RWG
DESIGNED BY	TBK
DRAWN BY	CSL, KTD
CHECKED BY	RWG

SANITARY SEWER LINE NO. 1
C105

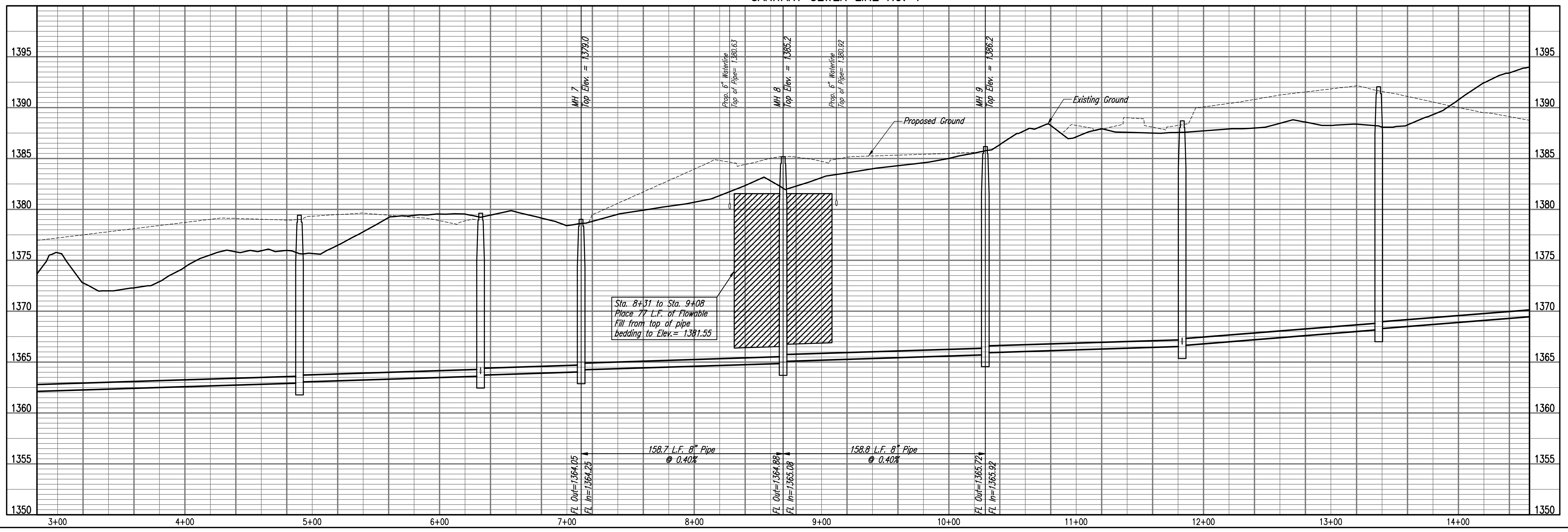
Sheet 11 of 15 - 2019, 8:25:39 AM by KURTIS DEKAT
 Proj. Name: 131 - 15-2019, 11:07:46 AM by KURTIS DEKAT
 U:\Wichita-Civil\2017\170551\022\Main\Drawings\170551-002-C106 SANITARY SEWER LINE NO. 1



SCALE:
 PLAN: LAT. & LONG. 0 40 80
 PROFILE: HORIZ. SAME AS ABOVE
 VERT. 0 5
 (5500) - SEE SHEET NO. C104 FOR SANITARY SEWER COORDINATES (TYP.)
 (7) = DENOTES SEWER SERVICE. SEE THIS SHEET FOR SEWER SERVICE SCHEDULE AND SHEET NO. C113 FOR DETAILS.

SANITARY SEWER RISER TABLE							FOR INFORMATION ONLY	
NUMBER	TYPE	LOCATION				APPROXIMATE LENGTH		
		LOT NO.	BLOCK NO.	LINE NO.	STATION	DIRECTION	VERTICAL (FT)	HORIZONTAL (FT)
3	4" TEE	5	B	1	7+47	RT	11	14
4	4" TEE	4	B	1	9+99	RT	14	14

SANITARY SEWER LINE NO. 1



SANITARY SEWER IMPROVEMENTS TO SERVE THE VILLAS AT OAK CREEK
 GARY JANZEN, P.E. - CITY ENGINEER
 CITY OF WICHITA PROJECT NO. 468-2019-017980

Issue:	
JOB NO.	35-170551-002-0042
DATE	OCTOBER 2019
PM	RWG
DESIGNED BY	TBK
DRAWN BY	CSL, KTD
CHECKED BY	RWG

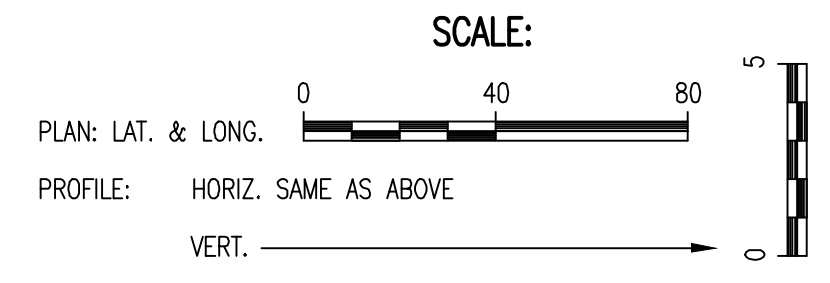
SANITARY SEWER LINE NO. 1
C106

N: 385,156.6099, E: 2,373,071.3479
 SS Line No. 1, Sta. 10+28.60
 MH 9
 Standard MH (5' Dia.)
 Match Point

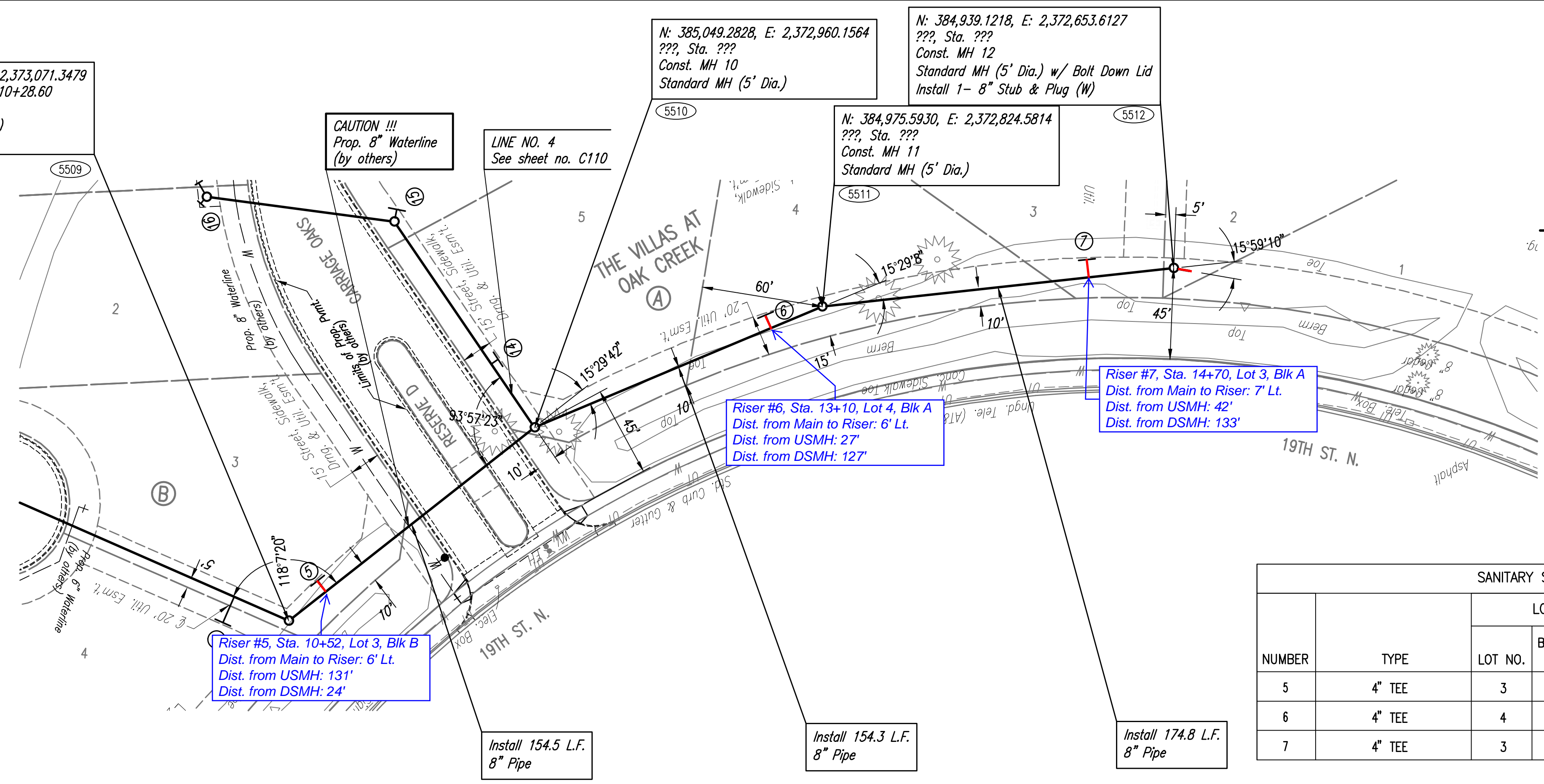
N: 385,049.2828, E: 2,372,960.1564
 ???, Sta. ???
 Const. MH 10
 Standard MH (5' Dia.)

N: 384,939.1218, E: 2,372,653.6127
 ???, Sta. ???
 Const. MH 12
 Standard MH (5' Dia.) w/ Bolt Down Lid
 Install 1- 8" Stub & Plug (W)

N: 384,975.5930, E: 2,372,824.5814
 ???, Sta. ???
 Const. MH 11
 Standard MH (5' Dia.)

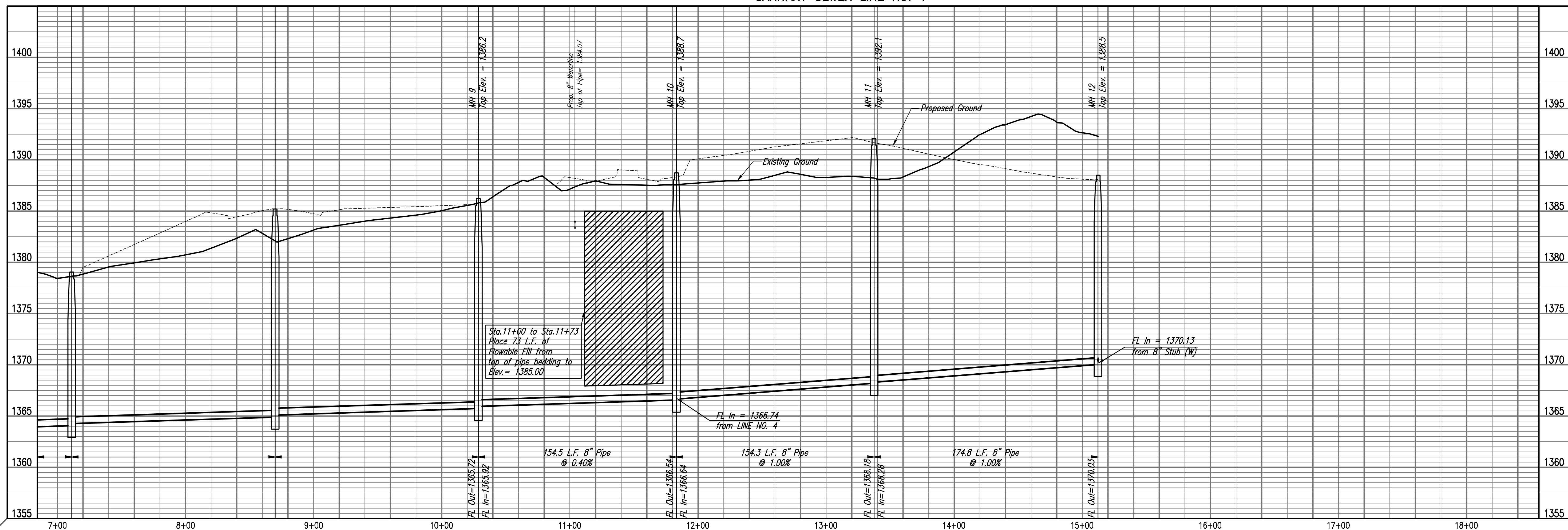


5500 - SEE SHEET NO. C104 FOR SANITARY SEWER COORDINATES (TYP.)
 ① = DENOTES SEWER SERVICE.
 SEE THIS SHEET FOR SEWER SERVICE SCHEDULE
 AND SHEET NO. C113 FOR DETAILS.

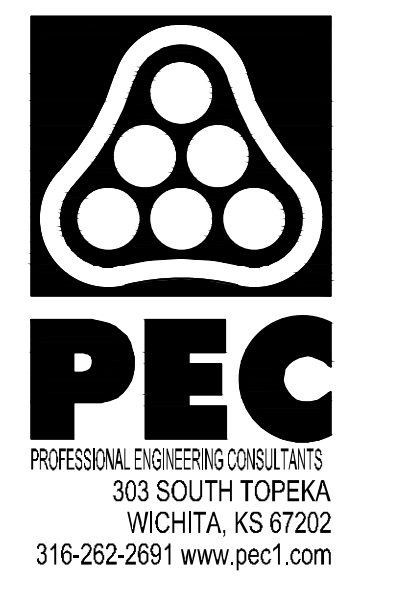


NUMBER	TYPE	LOCATION				FOR INFORMATION ONLY		
		LOT NO.	BLOCK NO.	LINE NO.	STATION	DIRECTION	VERTICAL (FT)	HORIZONTAL (FT)
5	4" TEE	3	B	1	10+52	LT	16	6
6	4" TEE	4	A	1	13+10	LT	19	6
7	4" TEE	3	A	1	14+70	LT	13	7

SANITARY SEWER LINE NO. 1



Sheet 11 of 15 - 2019, 8/27/15 AM by KURTIS DEKAT
 Proj. Scales: 1" = 15' - 2019, 1" = 10' - 2019, 1" = 10' - 2019
 U:\Projects-Civil\2017\170551\002\Main\Drawings\170551-002-C107 SANITARY SEWER LINE NO. 1



SANITARY SEWER IMPROVEMENTS TO SERVE THE VILLAS AT OAK CREEK
 GARY JANZEN, P.E. - CITY ENGINEER
 CITY OF WICHITA PROJECT NO. 468-2019-017980

Issue:	
JOB NO.	35-170551-002-0042
DATE	OCTOBER 2019
PM	RWG
DESIGNED BY	TBK
DRAWN BY	CSL, KTD
CHECKED BY	RWG

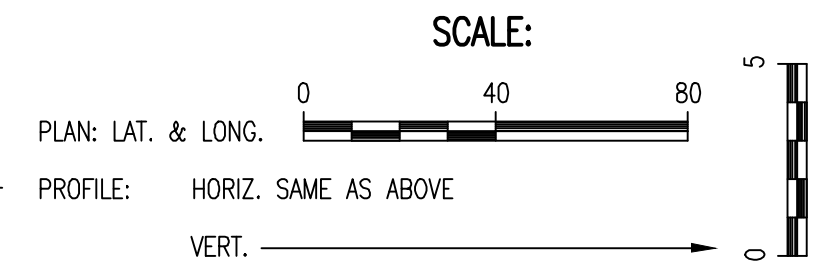
SANITARY SEWER LINE NO. 1
C107



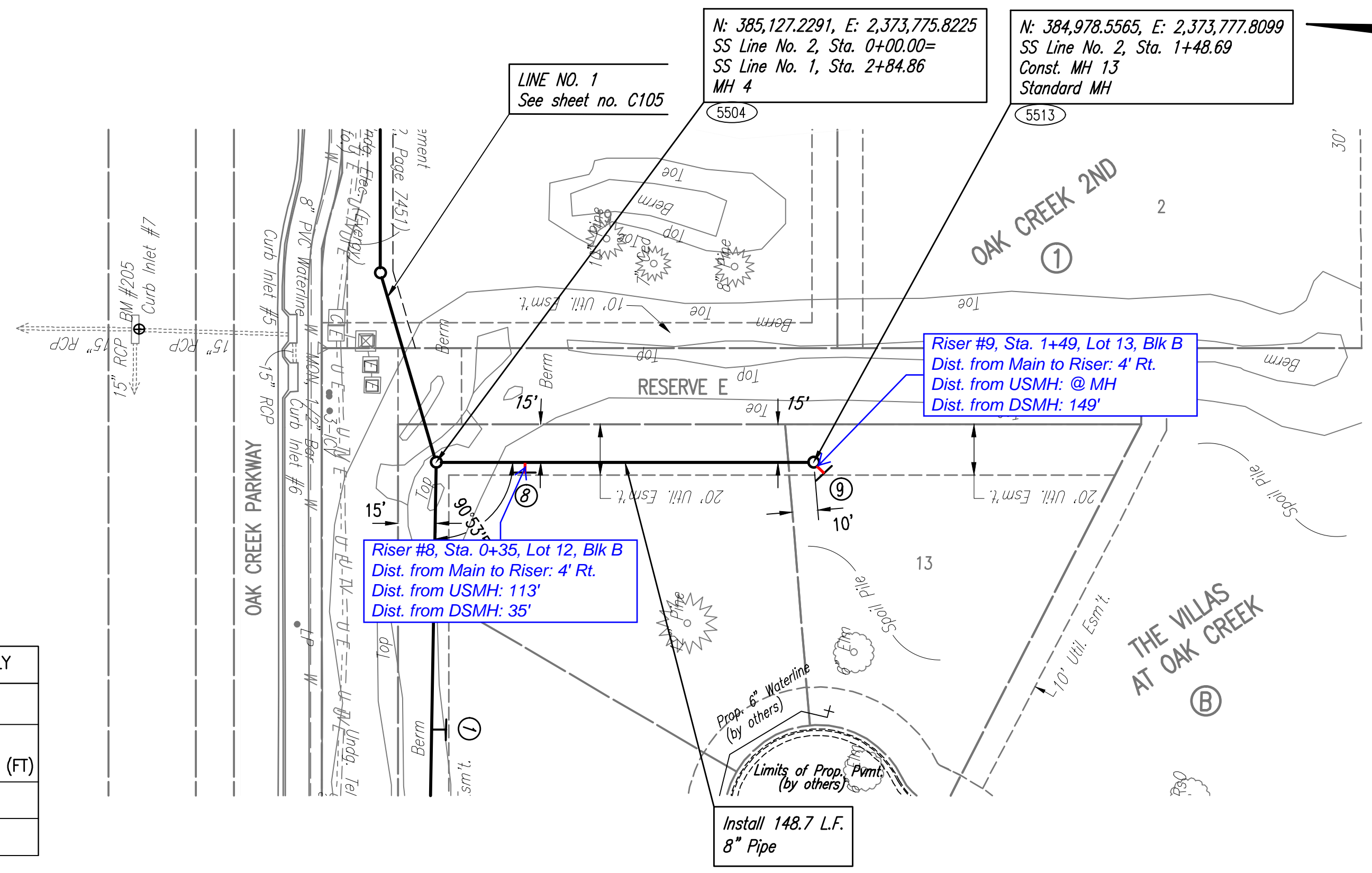
SANITARY SEWER IMPROVEMENTS TO SERVE THE VILLAS AT OAK CREEK
 GARY JANZEN, P.E. - CITY ENGINEER
 CITY OF WICHITA PROJECT NO. 468-2019-017980

Issue:	
JOB NO.	35-170551-002-0042
DATE	OCTOBER 2019
PM	RWG
DESIGNED BY	TBK
DRAWN BY	CSL, KTD
CHECKED BY	RWG

SANITARY SEWER LINE NO. 2
C108

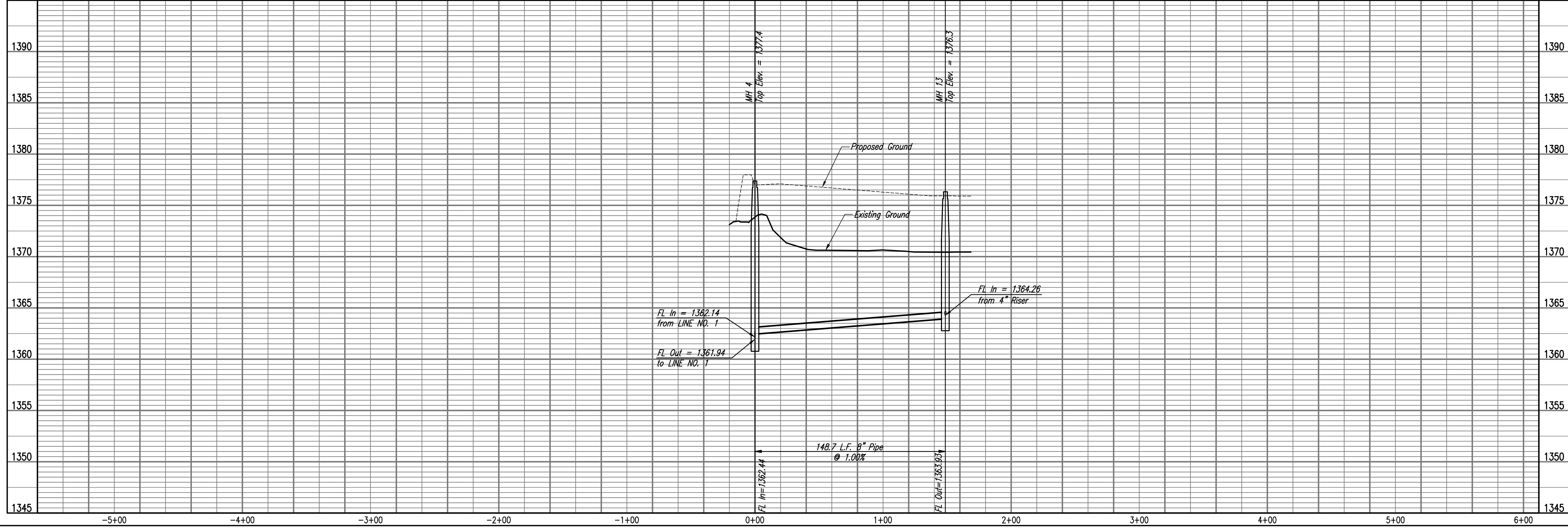


5500 - SEE SHEET NO. C104 FOR SANITARY SEWER COORDINATES (TYP.)
 ① = DENOTES SEWER SERVICE. SEE THIS SHEET FOR SEWER SERVICE SCHEDULE AND SHEET NO. C113 FOR DETAILS.



NUMBER	TYPE	SANITARY SEWER RISER TABLE					FOR INFORMATION ONLY		
		LOT NO.	BLOCK NO.	LINE NO.	STATION	DIRECTION	VERTICAL (FT)	HORIZONTAL (FT)	APPROXIMATE LENGTH
8	4" TEE	12	B	2	0+35	RT	9	4	
9	4" MH	13	B	2	1+49	RT	7	4	

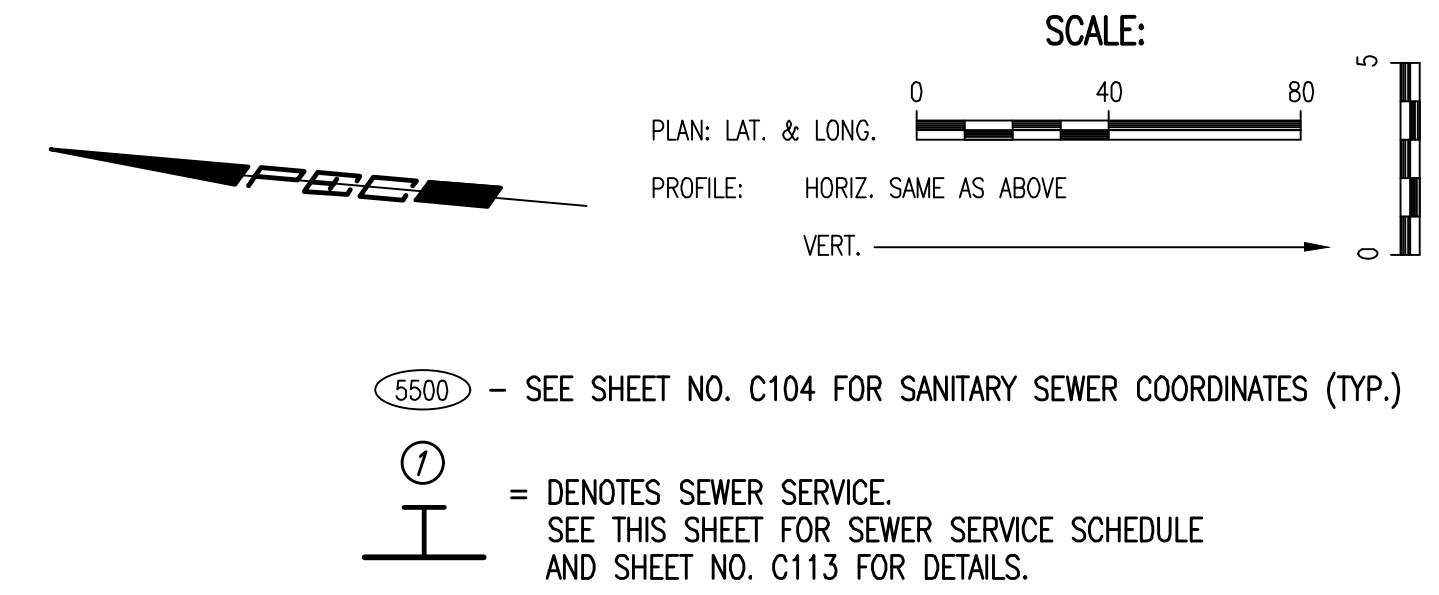
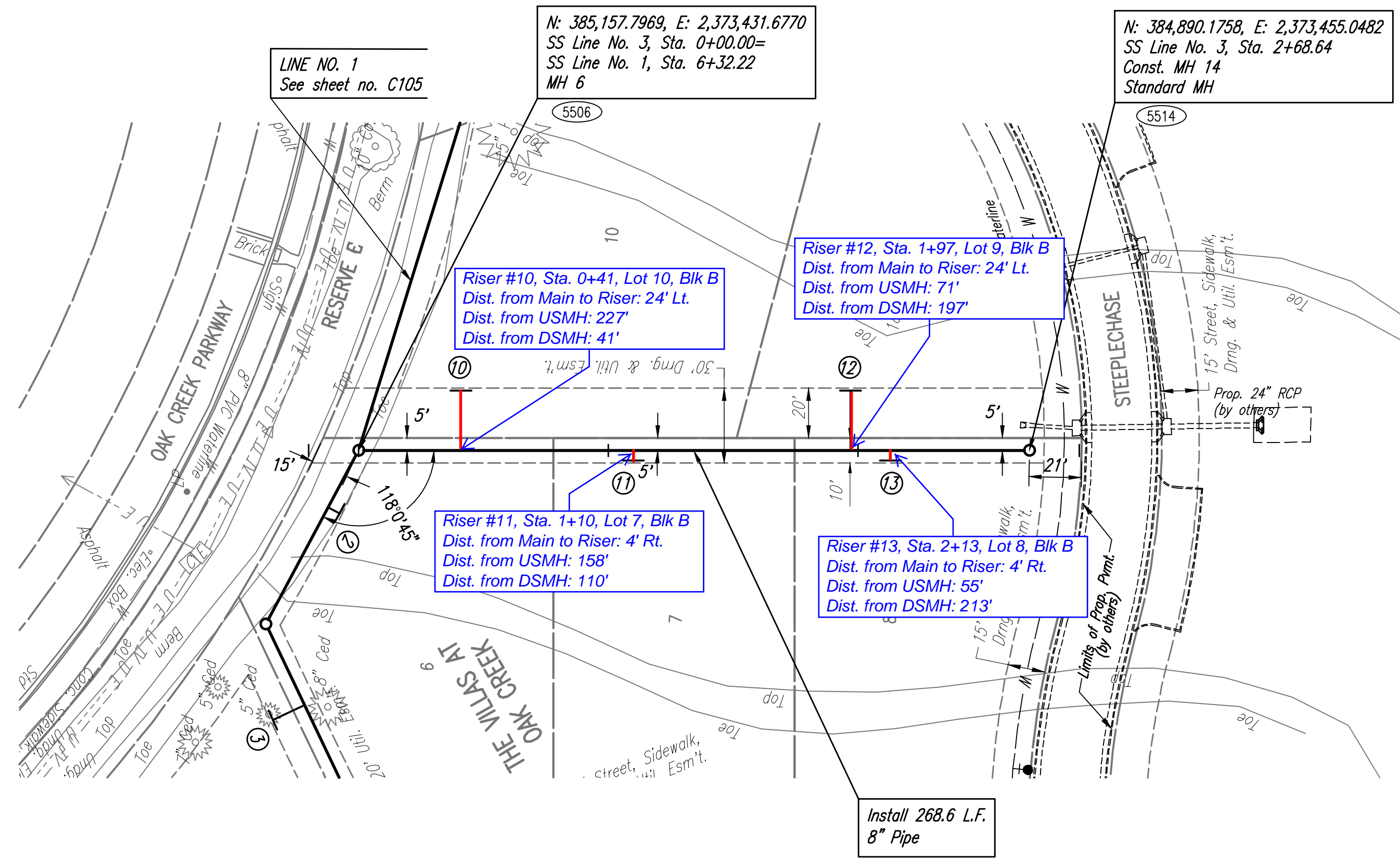
SANITARY SEWER LINE NO. 2



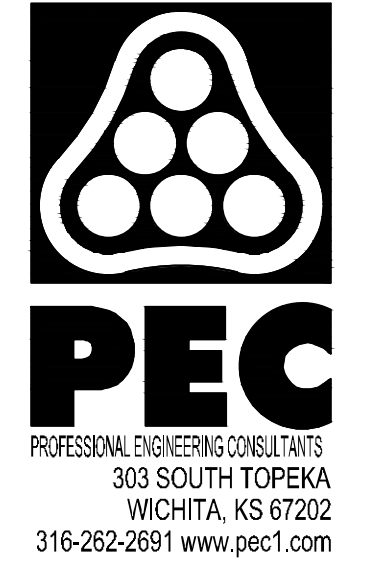
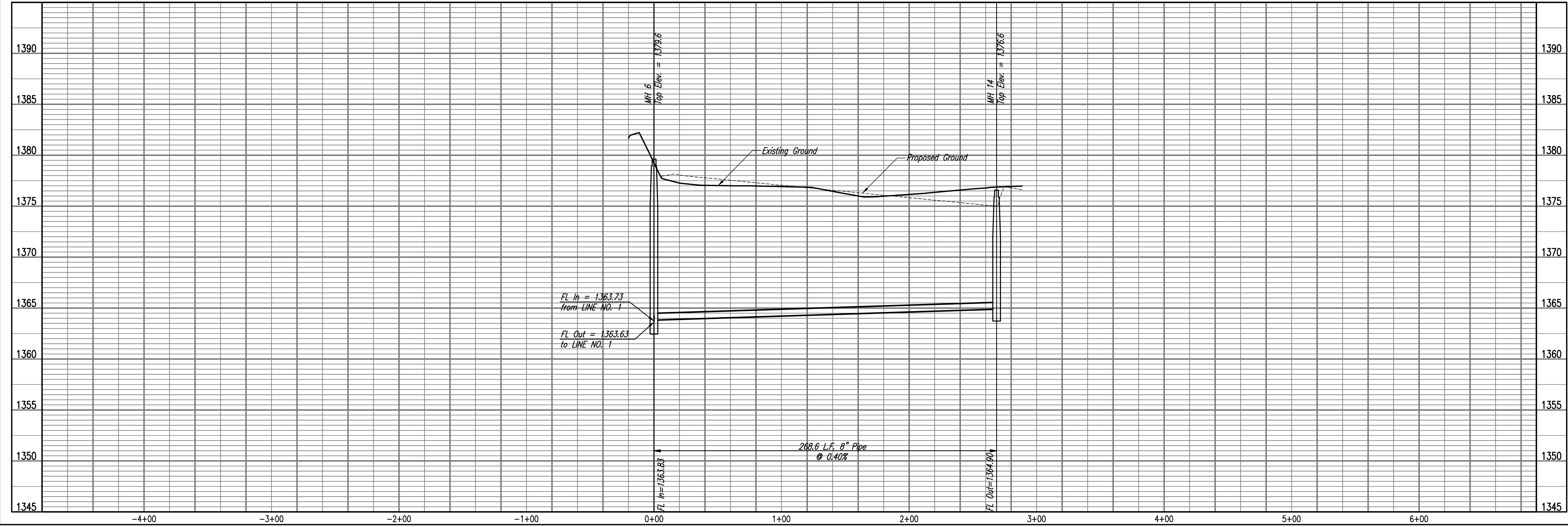
Sheet 11 of 15 - 2019, 9:09:05 AM by KURTIS DEKAT
 Plot Scale: 1" = 15'-0" (1:180) AM KURTIS DEKAT
 U:\Wichita-Civil\2017\170551\02\Main\Drawings\170551-002-C108 SANITARY SEWER LINE NO. 2

Sheet 11 of 15 - 2019, 9:30:39 AM by KURTIS DEKAT
 Plot Scale: 1" = 15'-2019, 11:27:57 AM by KURTIS DEKAT
 U:\Wichita-Civil\2017\170551\022\Civil\Drawings\170551-002-C109 SANITARY SEWER LINE NO. 3

SANITARY SEWER RISER TABLE							FOR INFORMATION ONLY	
NUMBER	TYPE	LOCATION					APPROXIMATE LENGTH	
		LOT NO.	BLOCK NO.	LINE NO.	STATION	DIRECTION	VERTICAL (FT)	HORIZONTAL (FT)
10	4" TEE	10	B	3	0+41	LT	9	24
11	4" TEE	7	B	3	1+10	RT	8	4
12	4" TEE	9	B	3	1+97	LT	7	24
13	4" TEE	8	B	3	2+13	RT	7	4



SANITARY SEWER LINE NO. 3



SANITARY SEWER IMPROVEMENTS TO SERVE THE VILLAS AT OAK CREEK
 GARY JANZEN, P.E. - CITY ENGINEER
 CITY OF WICHITA PROJECT NO. 468-2019-017980

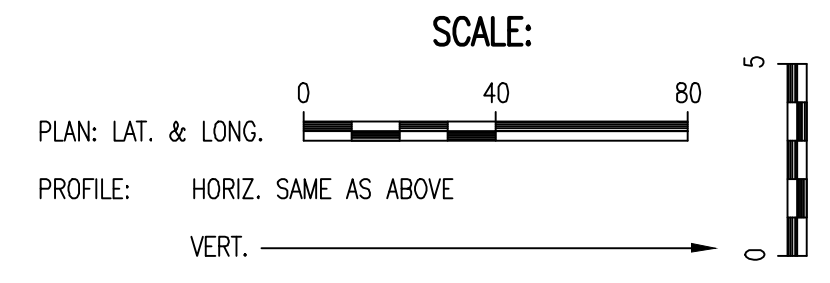
Issue:	
JOB NO.	35-170551-002-0042
DATE	OCTOBER 2019
PM	RWG
DESIGNED BY	TBK
DRAWN BY	CSL, KTD
CHECKED BY	RWG

SANITARY SEWER LINE NO. 3
C109

N: 385,049.2828, E: 2,372,960.1564
 SS Line No. 4, Sta. 0+00.00=
 SS Line No. 1, Sta. 11+83.14
 MH 10

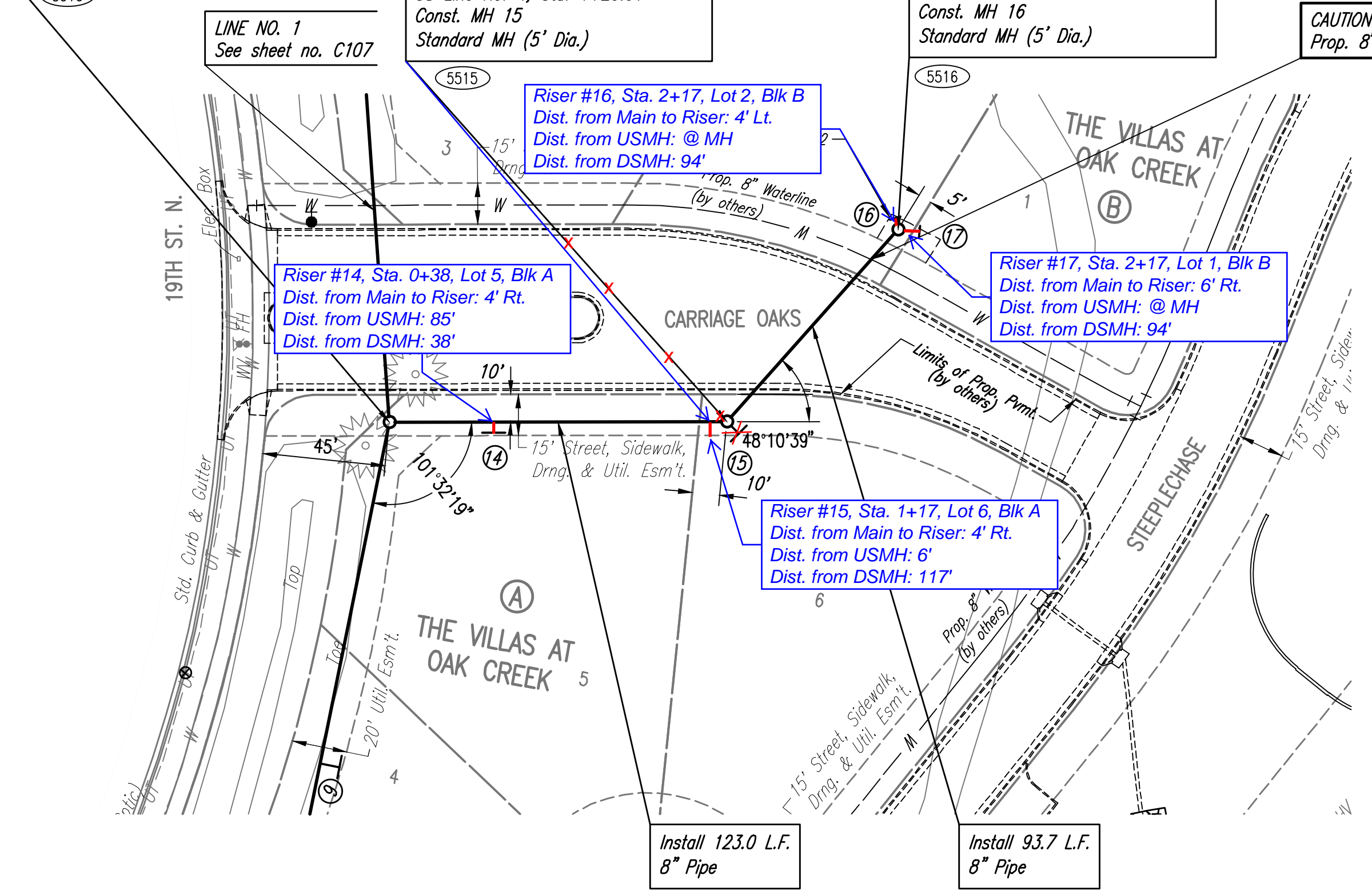
N: 384,955.1119, E: 2,373,039.3048
 SS Line No. 4, Sta. 1+23.01-1+17
 Const. MH 15
 Standard MH (5' Dia.)

N: 384,952.2064, E: 2,373,132.9933
 Sta. 2+16.75
 Const. MH 16
 Standard MH (5' Dia.)

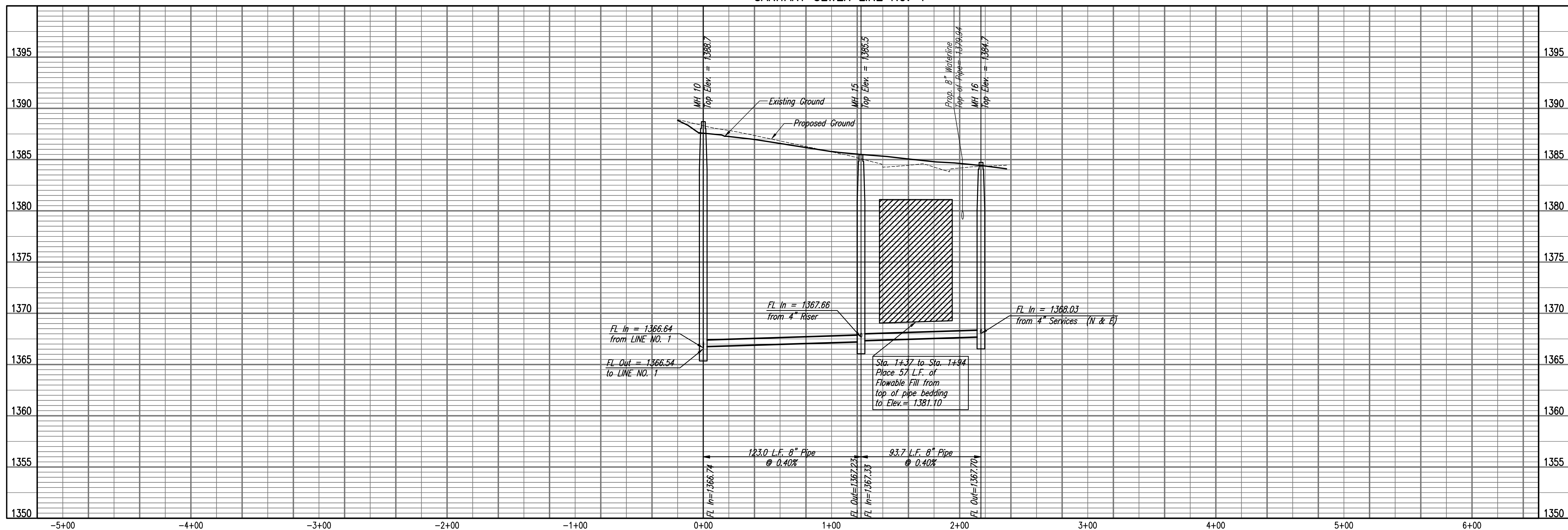


5500 - SEE SHEET NO. C104 FOR SANITARY SEWER COORDINATES (TYP.)
 I = DENOTES SEWER SERVICE. SEE THIS SHEET FOR SEWER SERVICE SCHEDULE AND SHEET NO. C113 FOR DETAILS.

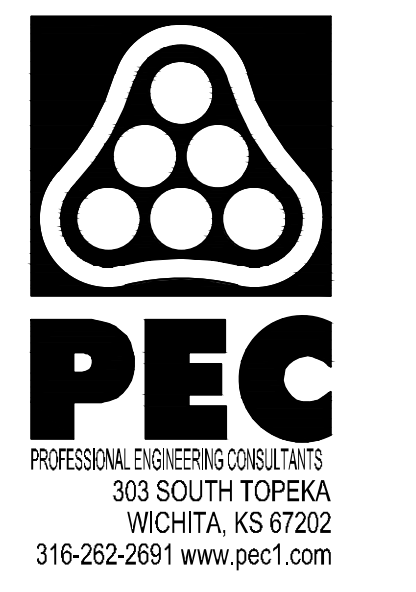
NUMBER	TYPE	LOCATION				DIRECTION	FOR INFORMATION ONLY	
		LOT NO.	BLOCK NO.	LINE NO.	STATION		VERTICAL (FT)	HORIZONTAL (FT)
14	4" TEE	5	A	4	0+38	RT	15	4
15	4" MH	6	A	4	1+17 1+23	RT	12	4
16	4" TEE	2	B	4	2+16.75 2+10	LT	11	4
17	4" TEE	1	B	4	2+16.75 2+10	RT	11	6



SANITARY SEWER LINE NO. 4



Sheet 11 of 15 - 2019, 9/21/14, AM, by KURTIS DEKAT
 Proj. No. 131-15-2019, 11/27/10, AM, KURTIS DEKAT
 U:\Wichita-Civil\2017\170551\Drawings\170551-002-C110 SANITARY SEWER LINE NO. 4



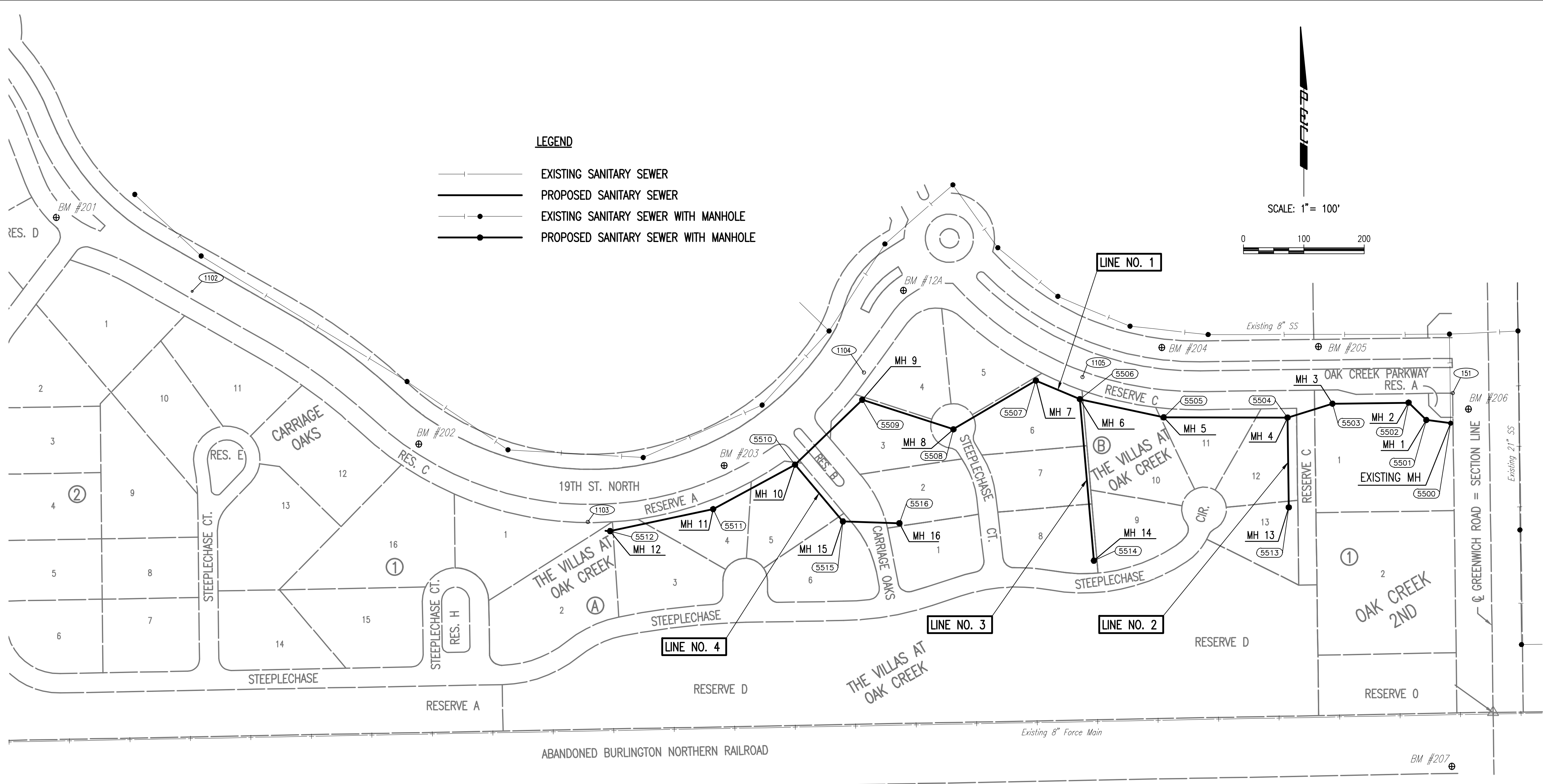
SANITARY SEWER IMPROVEMENTS TO SERVE THE VILLAS AT OAK CREEK
 GARY JANZEN, P.E. - CITY ENGINEER
 CITY OF WICHITA PROJECT NO. 468-2019-017980

JOB NO.	35-170551-002-0042
DATE	OCTOBER 2019
PM	RWG
DESIGNED BY	TBK
DRAWN BY	CSL, KTD
CHECKED BY	RWG

SANITARY SEWER LINE NO. 4
C110



SANITARY SEWER IMPROVEMENTS TO SERVE THE VILLAS AT OAK CREEK
 GARY JANZEN, P.E. - CITY ENGINEER
 CITY OF WICHITA PROJECT NO. 468-2019-017980



LEGEND

- EXISTING SANITARY SEWER
- PROPOSED SANITARY SEWER
- EXISTING SANITARY SEWER WITH MANHOLE
- PROPOSED SANITARY SEWER WITH MANHOLE

- CONTROL POINTS** 501
- Pl. No. 151
 1/2" REBAR WITH PEC CAP (PROPERTY CORNER) +/- 0.2' BELOW GROUND ON THE SOUTHWEST CORNER OF THE INTERSECTION OF OAK CREEK PKWY AND N GREENWICH RD.
 N: 385167.89, E: 2374049.30
 1. 15.0' NORTH TO THE SOUTH CURB LINE OF E OAK CREEK PKWY.
 2. 25.5' EAST TO THE WEST CURB LINE ALONG N GREENWICH RD.
- Pl. No. 1101 - (NOT SHOWN)
 1/2" REBAR WITH PEC CONTROL CAP SET FLUSH WITH GROUND ON THE SOUTH SIDE OF E 19TH ST. AND ON THE WEST END OF THE BERM SOUTH OF THE ROUND-ABOUT AT E 19TH ST AND CHATEAU PKWY.
 N: 385,657.03, E: 2,371,578.30
 1. 49.1' NORTH TO A CHISELED "X" CUT ON THE SOUTHEAST CORNER OF THE CURB INLET.
 2. 77.8' NORTHEAST TO CHISELED "X" CUT ON CENTER OF THE WEST END OF THE CURB ISLAND SOUTHEAST OF THE ROUND-ABOUT
- Pl. No. 1102
 1/2" REBAR WITH PEC CONTROL CAP SET FLUSH WITH GROUND ON THE SOUTH SIDE OF EAST 19TH STREET AND EAST OF THE PROPOSED VERANDA STREET.
 N: 385,336.40, E: 2,371,961.09
 1. 96.6' WEST-NORTHWEST TO THE TOP BOLT OF A FIRE HYDRANT.
 2. 3.45' NORTH TO A CHISELED "X" CUT IN THE TOP OF THE SOUTH CURB LINE ALONG 19TH STREET.
- Pl. No. 1103
 1/2" REBAR WITH PEC CONTROL CAP SET FLUSH WITH GROUND ON THE SOUTH SIDE OF E 19TH ST. AND ON THE WEST END OF THE BERM SOUTH OF THE PROPOSED IN CARRIAGE OAKS ST.
 N: 384,954.16, E: 2,372,616.65
 1. 43.4' NORTH TO A CHISELED "X" CUT ON THE SOUTH CURB LINE OF 19TH ST.
 2. 48.8' NORTHWEST TO THE SOUTHEAST BOLT OF A 12" X 24" BURIED ELECTRICAL BOX.
- Pl. No. 1104
 1/2" REBAR WITH PEC CONTROL CAP SET FLUSH WITH GROUND ON THE SOUTHEAST SIDE OF E 19TH ST. AND ON THE NORTH END OF THE BERM SOUTH OF THE ROUND-ABOUT AT E 19TH ST. AND OAK CREEK PKWY.
 N: 385,201.40, E: 2,373,073.86
 1. 34.70' NORTHWEST TO A CHISELED "X" CUT ON THE TOP OF THE SOUTH/EAST CURB LINE ALONG E 19TH ST.
 2. 51.0' SOUTHWEST TO THE BASE OF THE "ROUND-ABOUT AHEAD" SIGN POST.
- Pl. No. 1105
 1/2" REBAR WITH PEC CONTROL CAP SET FLUSH WITH GROUND ON THE SOUTH SIDE OF OAK CREEK PKWY.
 N: 385,194.10, E: 2,373,436.08
 1. 40.4' NORTHWEST TO A CHISELED "X" CUT IN THE EAST SIDE OF THE CONCRETE BASE OF A STREET LIGHT POLE.
 2. 23.8' NORTH TO A CHISELED "X" CUT ON THE TOP OF THE SOUTH CURB LINE ALONG E 19TH ST.

SANITARY SEWER LINE NO. 1

COORDINATE LIST				
POINT	NORTHING	EASTING	STATION	DESCRIPTION
5500	385,117.8259	2,374,045.9797	0+00.00	EXISTING MH
5501	385,123.3306	2,374,005.5802	0+40.00	MH 1
5502	385,151.9101	2,373,976.2262	0+80.97	MH 2
5503	385,150.2251	2,373,850.1790	2+07.03	MH 3
5504	385,127.2291	2,373,775.8225	2+84.86	MH 4
5505	385,127.7161	2,373,570.7306	4+89.95	MH 5
5506	385,157.7969	2,373,431.6770	6+32.22	MH 6
5507	385,188.6614	2,373,359.0404	7+11.14	MH 7
5508	385,107.8804	2,373,222.4408	8+69.84	MH 8
5509	385,156.6099	2,373,071.3479	10+28.60	MH 9
5510	385,049.2828	2,372,960.1564	11+83.14	MH 10
5511	384,975.4652	2,372,824.2445	13+37.45	MH 11
5512	384,939.1218	2,372,653.6127	15+12.26	MH 12

SANITARY SEWER LINE NO. 2

COORDINATE LIST				
POINT	NORTHING	EASTING	STATION	DESCRIPTION
5504	385,127.2291	2,373,775.8225	0+00.00	MH 4
5513	384,978.5565	2,373,777.8099	1+48.69	MH 13

SANITARY SEWER LINE NO. 3

COORDINATE LIST				
POINT	NORTHING	EASTING	STATION	DESCRIPTION
5506	385,157.7969	2,373,431.6770	0+00.00	MH 6
5514	384,890.1758	2,373,455.0482	2+68.84	MH 14

SANITARY SEWER LINE NO. 4

COORDINATE LIST				
POINT	NORTHING	EASTING	STATION	DESCRIPTION
5510	385,049.2828	2,372,960.1564	0+00.00	MH 10
5515	384,955.1119	2,373,039.3048	1+23.01	MH 15
5516	384,952.2064	2,373,132.9933	2+16.75	MH 16

- BENCH MARK LIST** BM #1
- BM #12A - SQUARE CUT IN THE CENTER FACE OF THE CURB INLET ON THE SOUTH CURB LINE OF 19TH ST. N. +/- 100' WEST OF OAK CREEK PARKWAY, WEST OF ROUNDABOUT CIRCLE. FROM PEC PROJECT #170638-000 CARRIAGE OAKS ADDITION PLAT. ELEV.= 1380.58 (NAVD88)
- BM #16 - (NOT SHOWN) SQUARE CUT ON THE SOUTH TOP OF CURB IN REMINGTON PLACE ADDITION. NEAR THE NORTHWEST CORNER OF LOT 5, BLOCK 1 OAK CREEK 2ND ADDITION. +/- 100' WEST OF CRANBROOK STREET. FROM PEC PROJECT # 170638-000 CARRIAGE OAKS ADDITION PLAT. ELEV.= 1395.23 (NAVD88)
- BM #201 - SQUARE CUT ON THE NORTHEAST SIDE OF A CONCRETE LIGHT POLE BASE ON THE SOUTH SIDE OF 19TH ST. N AND WEST OF N VERANDA ST. +/- 3' NORTHEAST TO THE SOUTH CURB LINE ALONG 19TH ST. N. +/- 68' NORTHEAST TO THE BASE OF THE "ROUNDABOUT AHEAD" SIGN POST. ELEV.= 1399.86 (NAVD88)
- BM #202 - SQUARE CUT ON THE SOUTH TOP OF CURB ALONG 19TH ST. N. NEAR THE SOUTHWEST CORNER OF LOT 4 BLOCK 3, OAK CREEKS 2ND ADDITION. +/- 5' SOUTHWEST TO THE TOP BOLT OF A FIRE HYDRANT. +/- 55' WEST TO THE CENTER OF A BURIED ELECTRIC HAND BOX. +/- 64' NORTHWEST TO THE BASE OF A LIGHT POLE. ELEV.= 1394.77 (NAVD88)
- BM #203 - SQUARE CUT ON THE SOUTH TOP OF CURB ALONG 19TH ST. N. NEAR THE SOUTHEAST CORNER OF LOT 3 BLOCK 2, OAK CREEK 2ND ADDITION. +/- 50' NORTHEAST TO THE TOP BOLT ON A FIRE HYDRANT. +/- 40' WEST OF N CARRIAGE OAKS ST. ELEV.= 1389.93 (NAVD88)
- BM #204 - SQUARE CUT ON THE NORTH TOP OF CURB ALONG 19TH ST. N. NEAR THE SOUTHEAST CORNER OF LOT 3 BLOCK 1 OAK CREEK 4TH ADDITION. +/- 17' EAST-NORTHEAST TO THE BASE OF A LIGHT POLE. +/- 24' NORTH TO THE TOP OF A TELEPHONE PEDESTAL. +/- 39' WEST-NORTHWEST TO THE BASE OF A "PEDESTRIAN CROSSING" SIGN POST. ELEV.= 1372.86 (NAVD88)
- BM #205 - SQUARE CUT IN THE CENTER OF THE TOP OF THE EAST INLET, ON THE NORTH SIDE OF 19TH ST. N., NEAR GREENWICH RD. +/- 12' EAST TO THE BASE OF A LIGHT POLE. +/- 72' SOUTH TO THE NORTHEAST CORNER OF RESERVE AREA "D" THE VILLAS AT OAK CREEK ADDITION. +/- 250' EAST TO THE WEST CURB LINE ALONG N GREENWICH RD. ELEV.= 1367.87 (NAVD88)
- BM #206 - SQUARE CUT IN THE CENTER OF A CURB INLET ON THE WEST SIDE OF N GREENWICH RD, AND SOUTH OF THE EAST ENTRANCE TO OAK CREEKS SUBDIVISION. +/- 27' NORTH-NORTHWEST TO THE BASE OF A WOOD LIGHT POLE. +/- 37' WEST TO THE SOUTH END OF THE STONE "OAK CREEKS" SIGN. +/- 51' NORTHWEST TO THE BASE OF THE "STOP" SIGN POST. ELEV.= 1363.66 (NAVD88)
- BM #207 - CITY OF WICHITA BRASS DISC ON THE SOUTH END OF THE WEST HEADWALL OF A RCB RUNNING EAST-WEST UNDER N GREENWICH RD. +/- 29' EAST TO THE WEST CURB LINE ALONG N GREENWICH RD. +/- 43' NORTH TO THE CENTERLINE OF THE GRAVEL PATH TO THE WEST (ABANDONED RR TRACKS). ELEV.= 1366.78 (NAVD88)

5500 = COORDINATE POINT NO.
 SEE SHEET NO. 3 FOR PLAT COORDINATES

Sheet 11 of 2019, 3/20/23, PM by KURTIS DEKAT
 Proj. No. 11-15-2019, 11/05/23, AM by KURTIS DEKAT
 U:\Wichita-Civil\2017\170638-000\Drawings\170638-002-C104-SANITARY SEWER BUBBLE.MXD

JOB NO.	35-170551-002-0042
DATE	OCTOBER 2019
PM	RWG
DESIGNED BY	TBK
DRAWN BY	CSL, KTD
CHECKED BY	RWG
SANITARY SEWER BUBBLE MAP	

C104