

GENERAL NOTES:

1. Contractor will be required to provide notice to utility companies a minimum of seventy-two (72) hours prior to any excavation, as follows:

Kansas One-Call 687-2470

The Contractor must notify the following in case of an emergency:

- Cox Communications 262-4270
- Kansas Gas Service 1-888-482-4950
- Westar Energy 383-8650
- Aquila Energy 1-800-303-0357
- AT&T 268-2245
- City of Wichita Water Dept. 268-4563
- City of Wichita Sewer Maint. 268-4024
- City of Wichita Storm Sewer Maint. 268-4090
- City of Wichita Traffic Maint. 268-4034
- Conoco Phillips Pipeline Co. 1-877-267-2290
- Southern Star Pipeline Co. 529-6600
- Kinder-Morgan Pipeline Co. 1-888-844-5658

2. Utility service lines, poles, valve boxes, meters, and etcetera are to be adjusted as necessary by others prior to construction unless the plans specifically call for their adjustment by the Contractor or unless the plans specifically identify a utility to be adjusted by its owner during construction. Existing utilities and their location, as shown on the plans, represent the best information obtainable for design. The Contractor will be required to work around existing utilities within the right-of-way which do not conflict with proposed construction.

3. Rubble from the removal of miscellaneous structures and excess excavation which is to be wasted shall be disposed of on sites to be provided by the Contractor. These sites shall be approved by the Engineer as to suitability, appearance and site location. Locations, in the opinion of the Engineer, that will leave an unsightly appearance will not be approved. All disposal sites must be approved by the Kansas Department of Health and Environment. Material either stockpiled or disposed of in a flood plain would require a Kansas State Board of Agriculture permit. Any material dumped in waters of the United States or wetlands is subject to U.S. Corps of Engineers permitting regulations. Any material buried or stockpiled beyond approved construction limits would require additional archaeological investigations unless buried in a previously approved borrow location.

4. Trees and shrubs in public right-of-way which are in direct conflict with proposed new construction shall be removed by the Contractor with the Engineer's approval. Trees and shrubs which are not in direct conflict with proposed new construction shall be saved and protected from damage.

5. The Contractor shall give all property owners and/or tenants of developed property abutting the construction of this project a minimum of ten (10) days notice prior to start of construction.

6. The Contractor shall be responsible for preserving property irons. The Contractor will be required to re-establish any property irons which are damaged or destroyed by his construction operations. Such irons shall be re-established by a licensed land surveyor in accordance with state laws.

7. All existing and proposed erosion control measures including silt fencing, erosion control mat, straw bales, inlet barriers, and const. entrance shall be maintained throughout construction by the contractor until project is accepted by the City of Wichita. The on-site engineer shall complete weekly reports on the status of erosion control measures. The contractor shall be required to comply with maintenance and/or replacement of erosion control measures as determined by the on-site engineer until project is accepted by City of Wichita. Maintenance and/or replacement of erosion control measures to be paid by measured quantity of each BMP item.

8. All excess excavation shall remain on-site and shall be stockpiled or spread at a location determined by the engineer.

9. The Contractor shall be responsible for maintaining continuous flow of sewage through construction. Contractor's proposed method for maintaining sewage flow shall be approved by the Engineer. Cost of maintaining flow of sewage through construction will not be paid for directly and this cost shall be considered as subsidiary to the other pay items of work.

10. All areas disturbed during construction shall be seeded as follows:

Seed: Rye grass (PLS)--5 lbs./1000 Sq. Ft.

All costs associated with seeding shall be included in bid item "Seeding". All seeding operations shall conform to City of Wichita Standard Specifications.

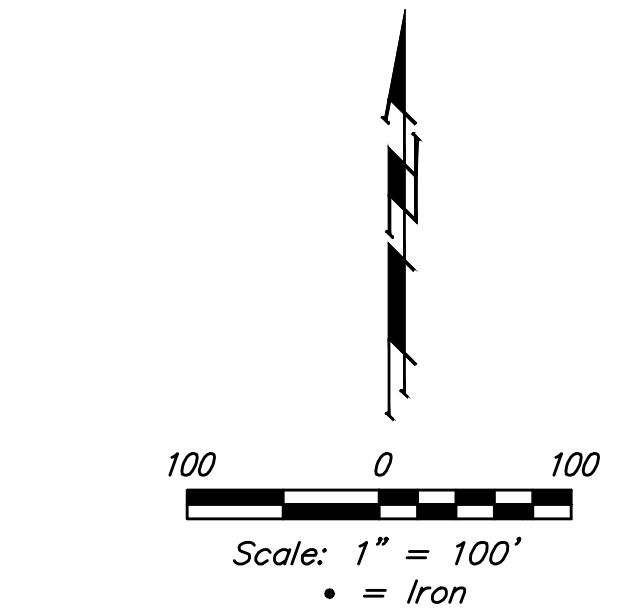
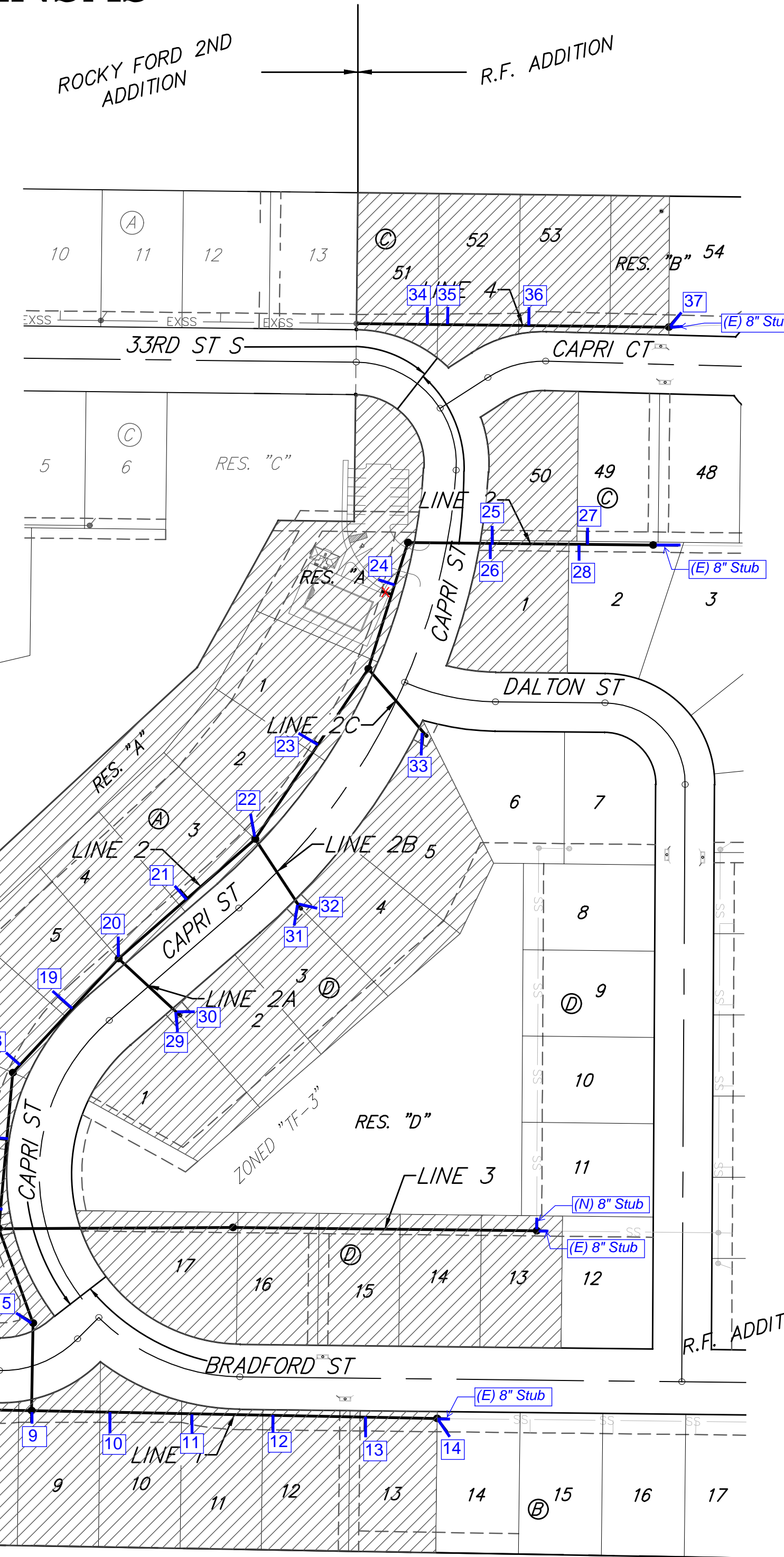
11. Trees and shrubs in the work area which are in direct conflict with proposed new construction shall be removed by the Contractor ONLY with the Developer or Baughman Company approval. Trees and shrubs which are not in direct conflict with proposed new construction shall be saved and protected from damage. If trimming is necessary, a chainsaw shall be used. Breaking limbs with equipment will not be allowed. An on-site pre-construction meeting will occur prior to any construction to discuss tree removal, tree protection, and tree trimming.

12. The Developer for this project is Jay Russell
P.O. Box 75450, Wichita, KS 67275
PH# (316)722-2417 jay.russell@russellco.com

SANITARY SEWER IMPROVEMENTS to serve **R.F. ADDITION - PH. I** CITY OF WICHITA, KANSAS

Gary Janzen, P.E. City Engineer
Project Number 468-2019-005338
OCA Number 744525

Mies Construction - Contractor
K. Yale - City of Wichita, Field Project Engineer
F. Smith - Baughman, Inspector
As-built
Stubs & Risers
Release Date (for connection purposes only): 8/20/2020
Completion Date: 3/03/2021
pdf: 9/28/2020 apr

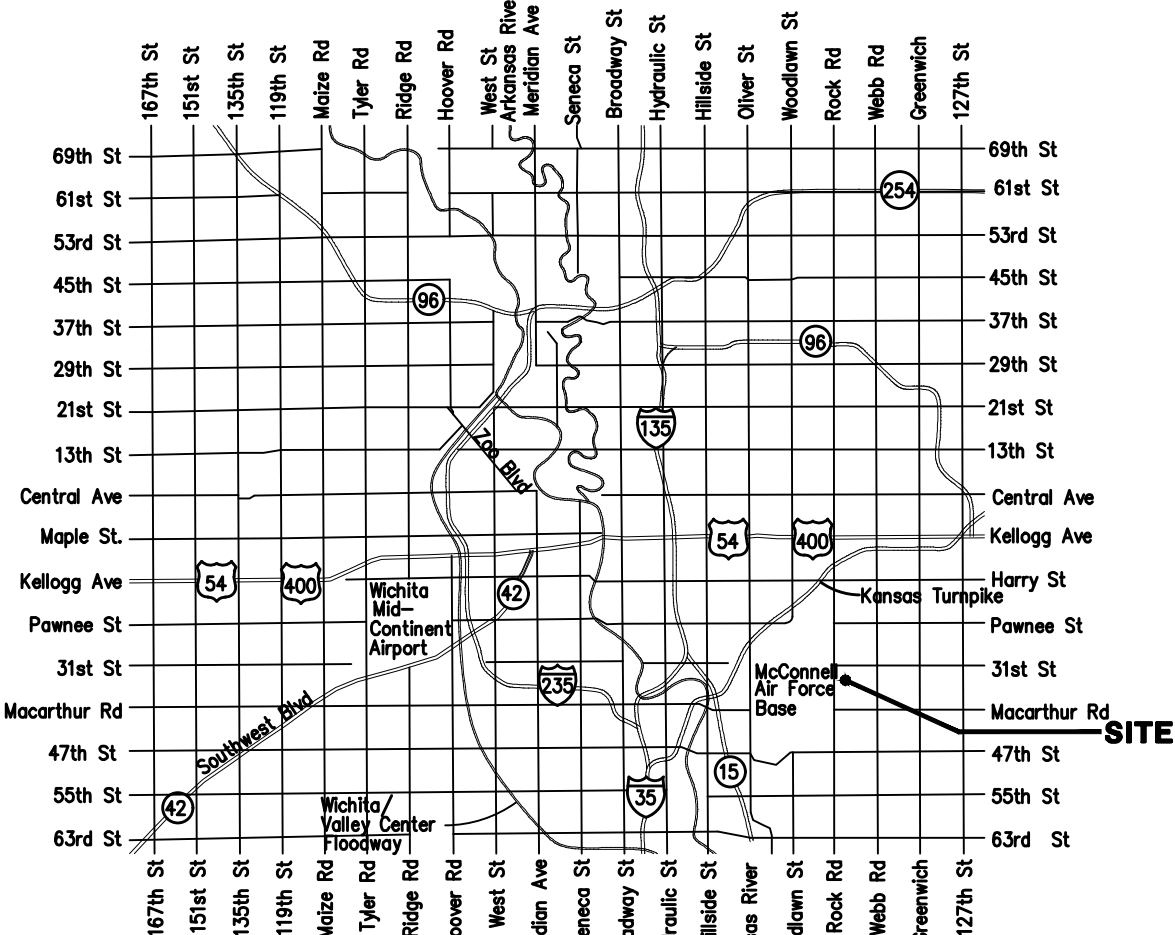


SHEET INDEX

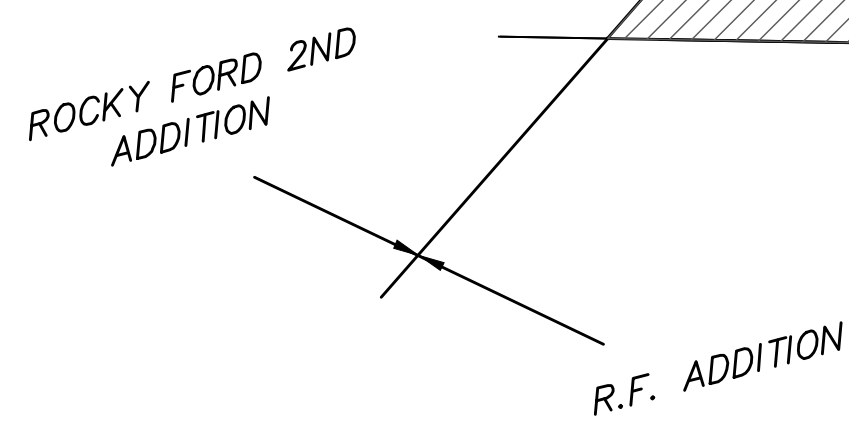
Title Sheet	1
Line 1	2-3
Line 2	4-5
Line 2A, 2B, & 2C	6
Line 3	7
Line 4	8
Erosion Control Plan	9
Erosion Control BMP Details	10-14
Standard Manhole Detail	15
Ring & Cover Detail	16
Vertical Riser Detail	17
Cleanout Detail	18
Coordinate Sheet	19-20
Copy of Plat	21

BENCHMARKS

- #1: "□" CUT CHISELED ON CURB, 15.2' S. OF SW COR., LOT 14, BLOCK C, ROCKY FORD 2ND ADDITION. ELEV. = 1385.10 NAVD88
- #2: "□" CUT CHISELED ON CURB, 8.6' N. & 11.7' W. OF SW COR., LOT 14, BLOCK C, ROCKY FORD 2ND ADDITION. ELEV. = 1380.11 NAVD88



VICINITY MAP



BENEFIT DISTRICT

Baughman
Baughman Company, P.A. 315 Ellis St. Wichita, KS 67211 P 316-262-7271 F 316-262-0149
ENGINEERING | SURVEYING | PLANNING | LANDSCAPE ARCHITECTURE



Sanitary Sewer Riser Location Table

Project Name: SS to serve RF Addition - Phase I

Project Location: South of 31 St Nso., E of Rock Road

Project NO.: 468-2019-005338

OCA No.: 744525

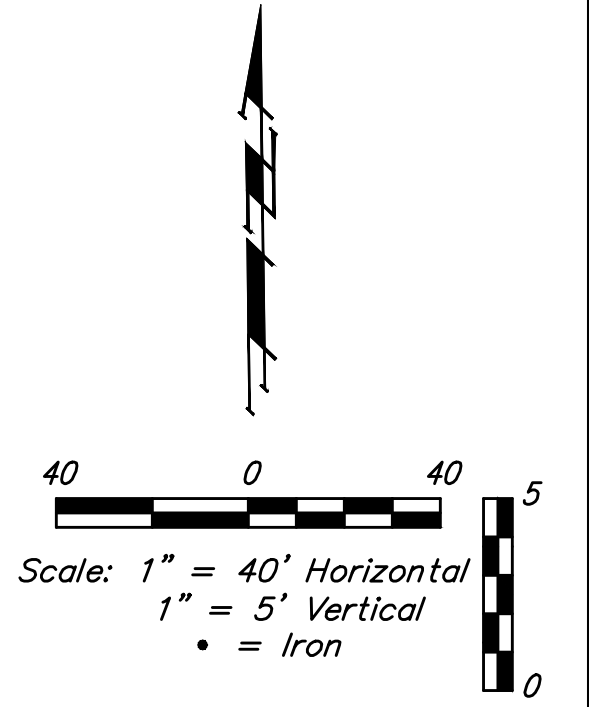
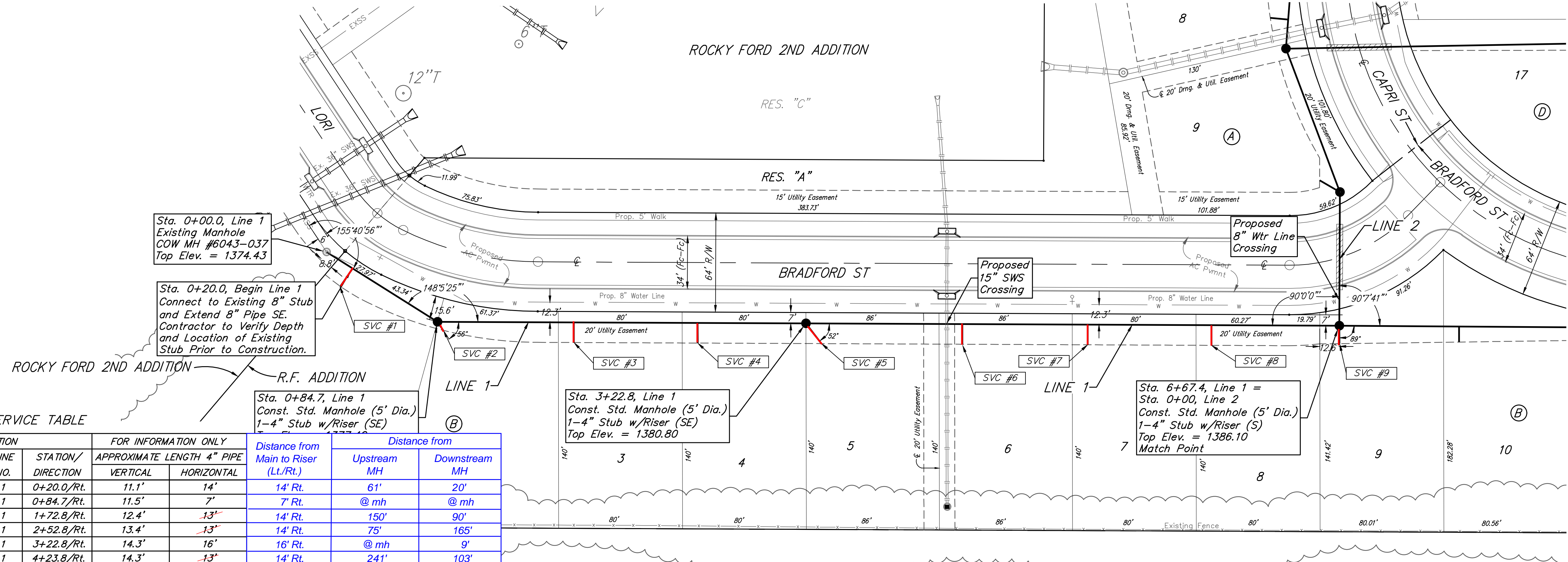
Contractor: Mies Construction

Inspector: Fred Smith - Baughman Co.

Riser No.	Line No.	Design Station	Distance From		Distance From	
			Main to Riser (Lt./Rt.)		Upstream MH	Downstream MH
1	1	+20.0	14'	RT	61'	20'
2	1	+84.7	7'	RT	Stub out of manhole	
3	1	1+72.8	14'	RT	150'	90'
4	1	2+52.8	14'	RT	75'	165'
5	1	3+22.8	16'	RT	Stub out of manhole	9'
6	1	4+23.8	14'	RT	241'	103'
7	1	5+04.8	14'	RT	163'	181'
8	1	5+84.8	13'	RT	84'	260'
9	1	6+67.4	13'	RT	Stub out of manhole	
10	1	7+44.8	10'	RT	322'	77'
11	1	8.25.4	10'	RT	244'	158'
12	1	9+05.4	15	RT	162'	238'
13	1	9+96.4	15	RT	70'	329'
14	1	10+67.4	15	RT	stub out of manhole	16'
15	2	+86.3	15	LT	stub out of manhole	8'
16	2	2+04.1	13	LT	141'	14'
17	2	2+73.7	20	LT	77'	78'
18	2	3+50.2	10	LT	174'	12'
19	2	4+25.6	18	LT	86'	69'
20	2	4+93.0	15	LT	Stub out of manhole	
21	2	5+83.0	12	LT	88'	91'
22	2	6+71.8	15	LT	Stub out of manhole	
23	2	7+84.1	5	LT	91'	113'
24	2	950.4→	10	LT	50'	77'
25	2	10+87.0	12	LT	163'	84'
26	2	10+85.0	10	RT	165'	82'
27	2	11+80.5	12	LT	64'	183'
28	2	11+72.5	8	RT	78'	169'
29	2A	+77.5	12	RT		78'
30	2A	+77.5	12	LT		78'

BENCHMARKS:
 #1: "□" CUT CHISELED ON CURB,
 15.2' S. OF SW COR., LOT 14,
 BLOCK C, ROCKY FORD 2ND
 ADDITION.
 ELEV. = 1385.10 NAVD88

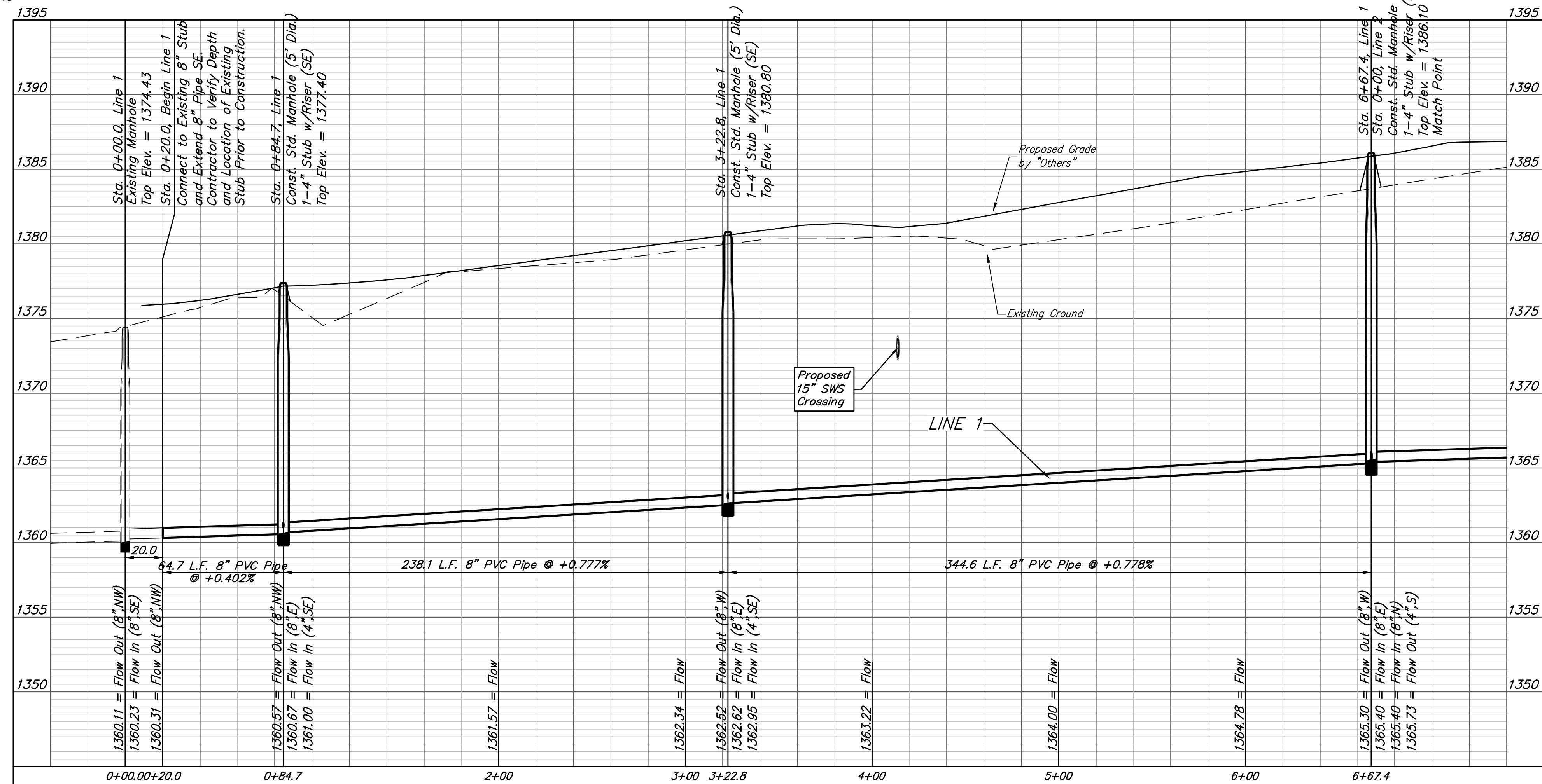
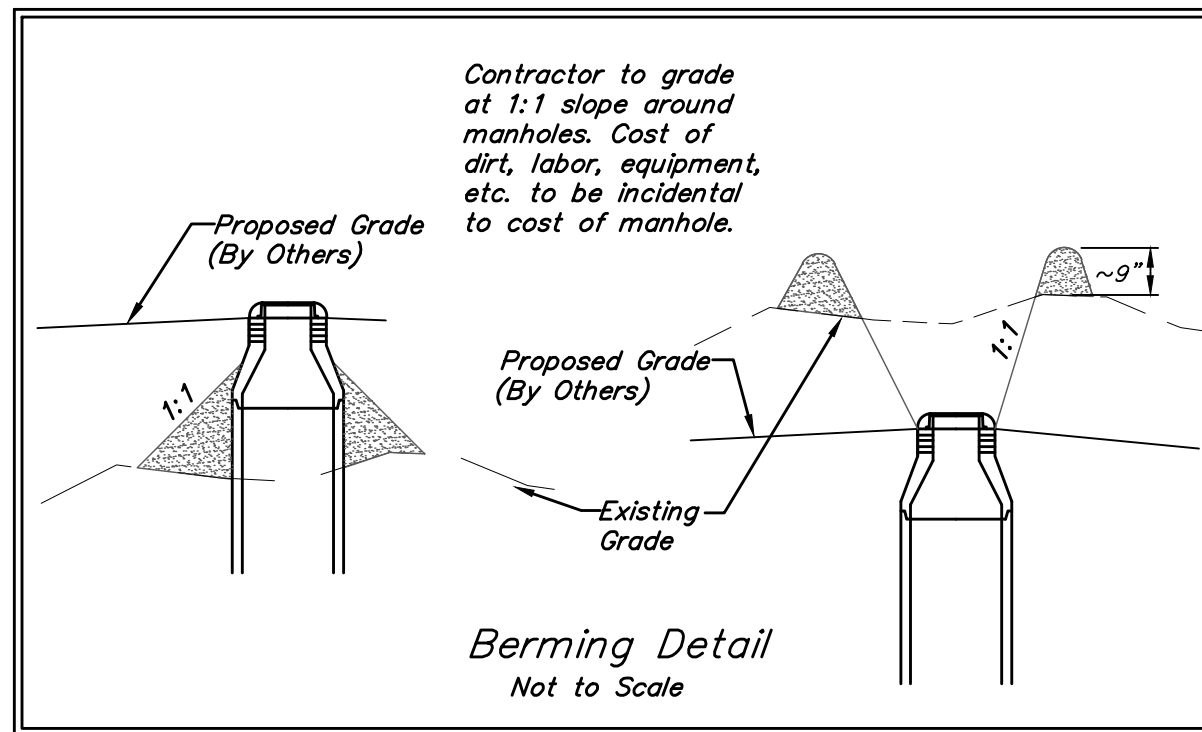
#2: "□" CUT CHISELED ON CURB,
 8.6' N. & 11.7' W. OF SW COR.,
 LOT 14, BLOCK C, ROCKY FORD
 2ND ADDITION.
 ELEV. = 1380.11 NAVD88



SEWER SERVICE TABLE

NUMBER	TYPE	LOCATION				FOR INFORMATION ONLY		Distance from Main to Riser (L/Rt.)	Distance from Upstream MH	Distance from Downstream MH
		LOT NO.	BLOCK NO.	LINE NO.	STATION/DIRECTION	APPROXIMATE LENGTH 4" PIPE	HORIZONTAL			
1	8" X 4" Tee	1	B	1	0+20.0/Rt.	11.1'	14'	14' Rt.	61'	20'
2	4" Stub	2	B	1	0+84.7/Rt.	11.5'	7'	7' Rt.	@ mh	@ mh
3	8" X 4" Tee	3	B	1	1+72.8/Rt.	12.4'	13'	14' Rt.	150'	90'
4	8" X 4" Tee	4	B	1	2+52.8/Rt.	13.4'	13'	14' Rt.	75'	165'
5	4" Stub	5	B	1	3+22.8/Rt.	14.3'	16'	16' Rt.	@ mh	9'
6	8" X 4" Tee	6	B	1	4+23.8/Rt.	14.3'	16'	14' Rt.	241'	103'
7	8" X 4" Tee	7	B	1	5+04.8/Rt.	15.7'	13'	14' Rt.	163'	181'
8	8" X 4" Tee	8	B	1	5+84.8/Rt.	17.2'	13'	13' Rt.	84'	260'
9	4" Stub	9	B	1	6+67.4/Rt.	17.8'	12'	13' Rt.	@ mh	@ mh

NOTE: Vertical Riser Pipe shall be extended to 2' minimum above ground water elevation and 4' maximum below proposed ground elevation.



All trench and manhole excavation areas from Sta. 0+00.0 to Sta. 10+67.4, Line 1 shall be backfilled with sand. The sand backfill shall be water-jetted and vibrated during backfilling. All costs shall be paid for as L.F. "Fill, Sand (Flushed & Vibrated)".

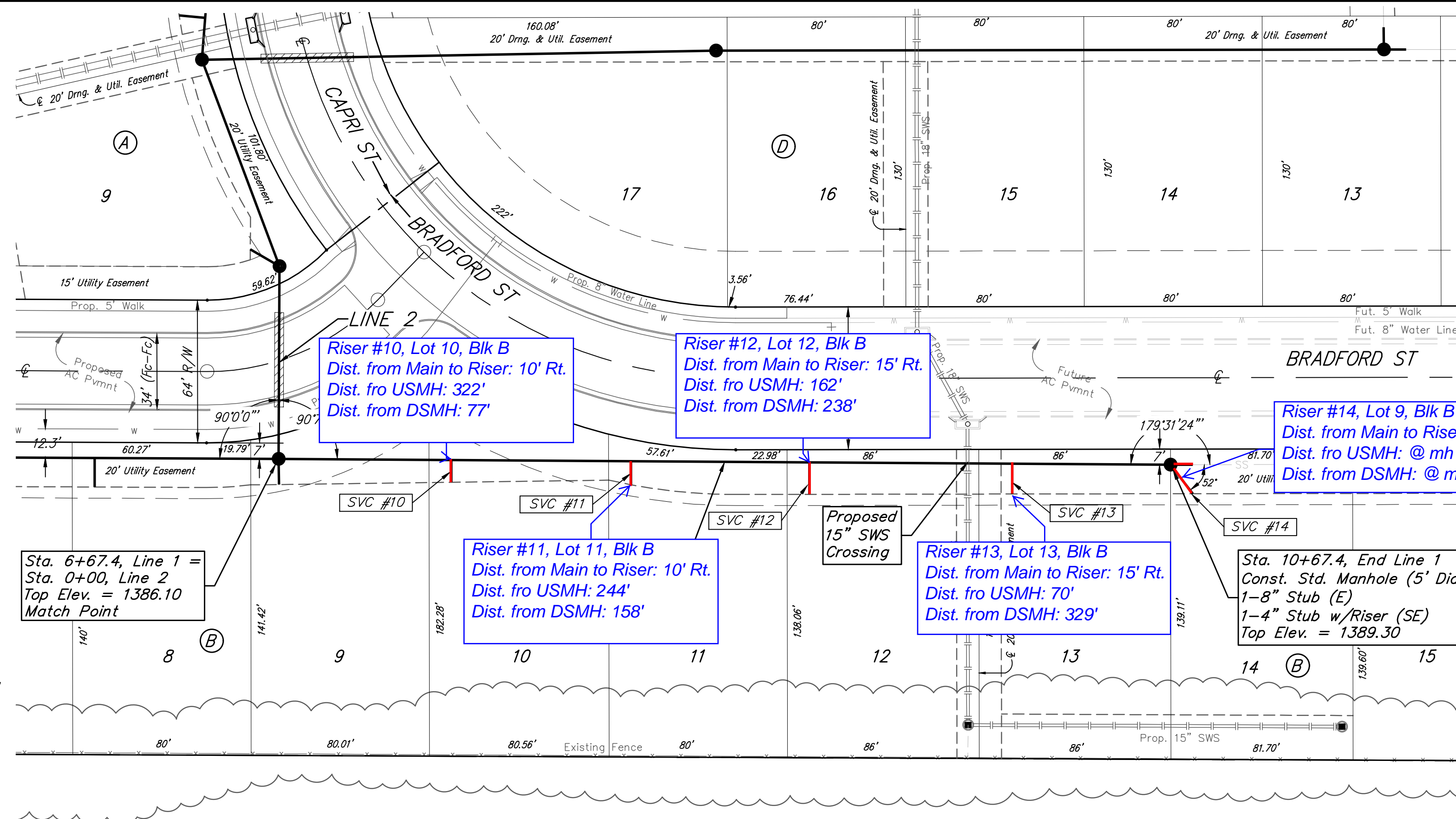


Baughman R.F. Addition - Phase I
LINE 1
 Sanitary Sewer Improvements

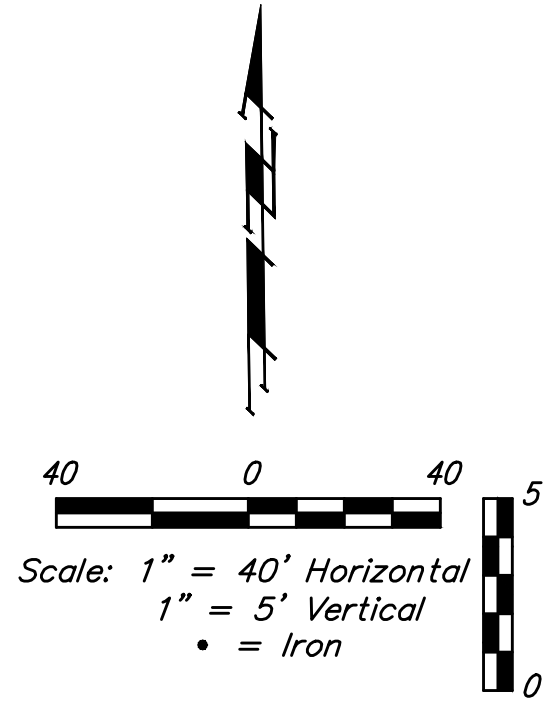
Baughman Company, P.A. 315 Ellis St. Wichita, KS 67211 P 316-262-7271 F 316-262-0149
 ENGINEERING | SURVEYING | PLANNING | LANDSCAPE ARCHITECTURE

PROJECT NUMBER: 468-2019-005338
 DESIGN: AEG
 DRAWN: HW
 APPROVED: [Signature]
 DATE: 3/9/20
 SCALE: Noted
 SHEET: 2 OF 21

BENCHMARKS:
 #1: "□" CUT CHISELED ON CURB,
 15.2' S. OF SW COR., LOT 14,
 BLOCK C, ROCKY FORD 2ND
 ADDITION.
 ELEV. = 1385.10 NAVD88
 #2: "□" CUT CHISELED ON CURB,
 8.6' N. & 11.7' W. OF SW COR.,
 LOT 14, BLOCK C, ROCKY FORD
 2ND ADDITION.
 ELEV. = 1380.11 NAVD88



R.F. ADDITION

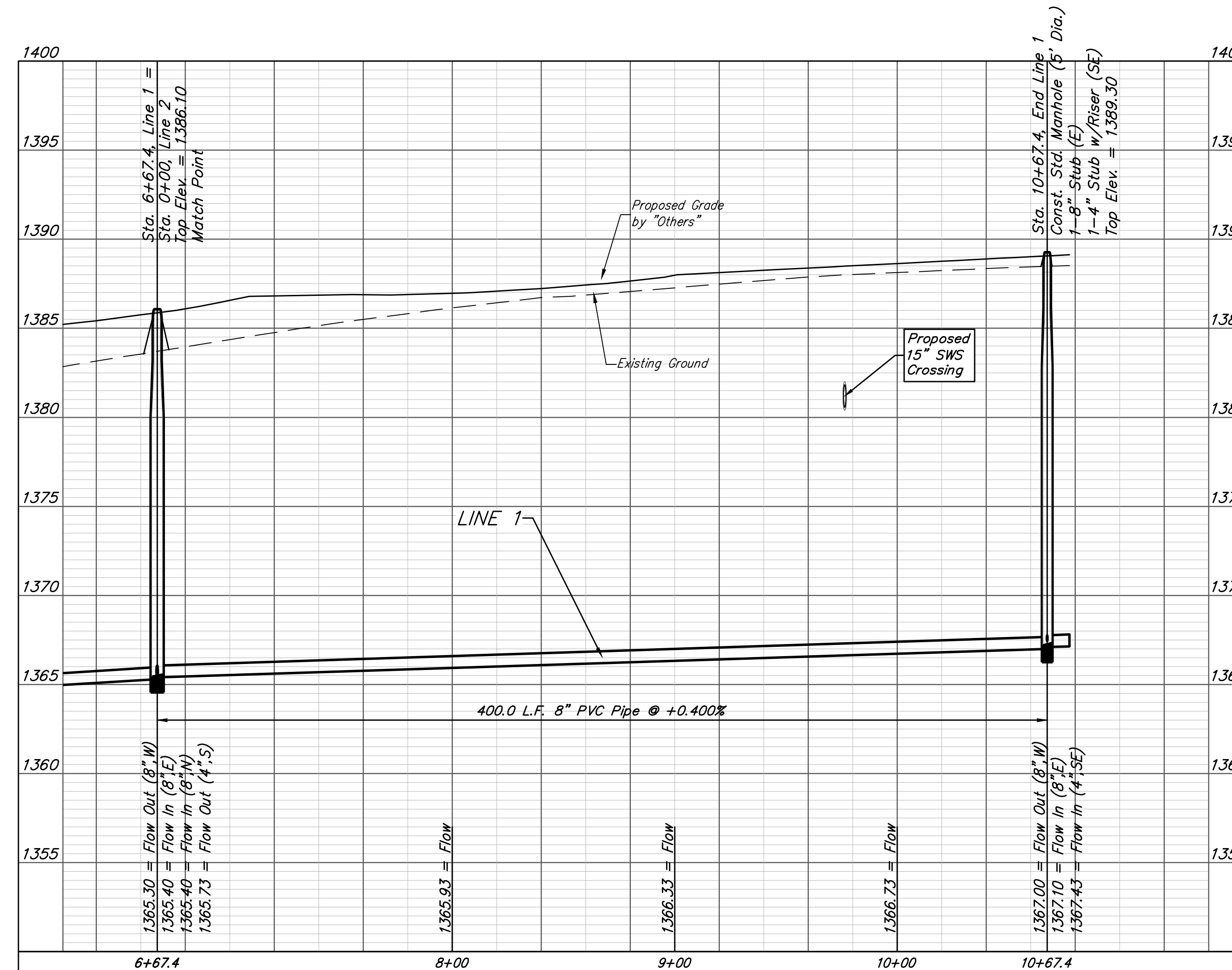


R.F. ADDITION

SEWER SERVICE TABLE

NUMBER	TYPE	LOCATION				FOR INFORMATION ONLY	
		LOT NO.	BLOCK NO.	LINE NO.	STATION/DIRECTION	APPROXIMATE LENGTH 4" PIPE VERTICAL	HORIZONTAL
10	8" X 4" Tee	10	B	1	7+44.8/Rt.	17.8'	10'
11	8" X 4" Tee	11	B	1	8+25.4/Rt.	18.3'	14'
12	8" X 4" Tee	12	B	1	9+05.4/Rt.	19.0'	14'
13	8" X 4" Tee	13	B	1	9+96.4/Rt.	19.4'	14'
14	4" Stub	14	B	1	10+67.4/Rt.	18.2'	18'

NOTE: Vertical Riser Pipe shall be extended to 2' minimum above ground water elevation and 4' maximum below proposed ground elevation.



Baughman R.F. Addition - Phase I
LINE 1
 Sanitary Sewer Improvements

Baughman Company, P.A. 315 Ellis St. Wichita, KS 67211 P 316-262-7271 F 316-262-0149
 ENGINEERING | SURVEYING | PLANNING | LANDSCAPE ARCHITECTURE

PROJECT NUMBER: 468-2019-005338 DESIGN: AEG DRAWN: HWJ
 APPROVED: DATE: 3/9/20
 SCALE: Noted SHEET: 3 OF 21

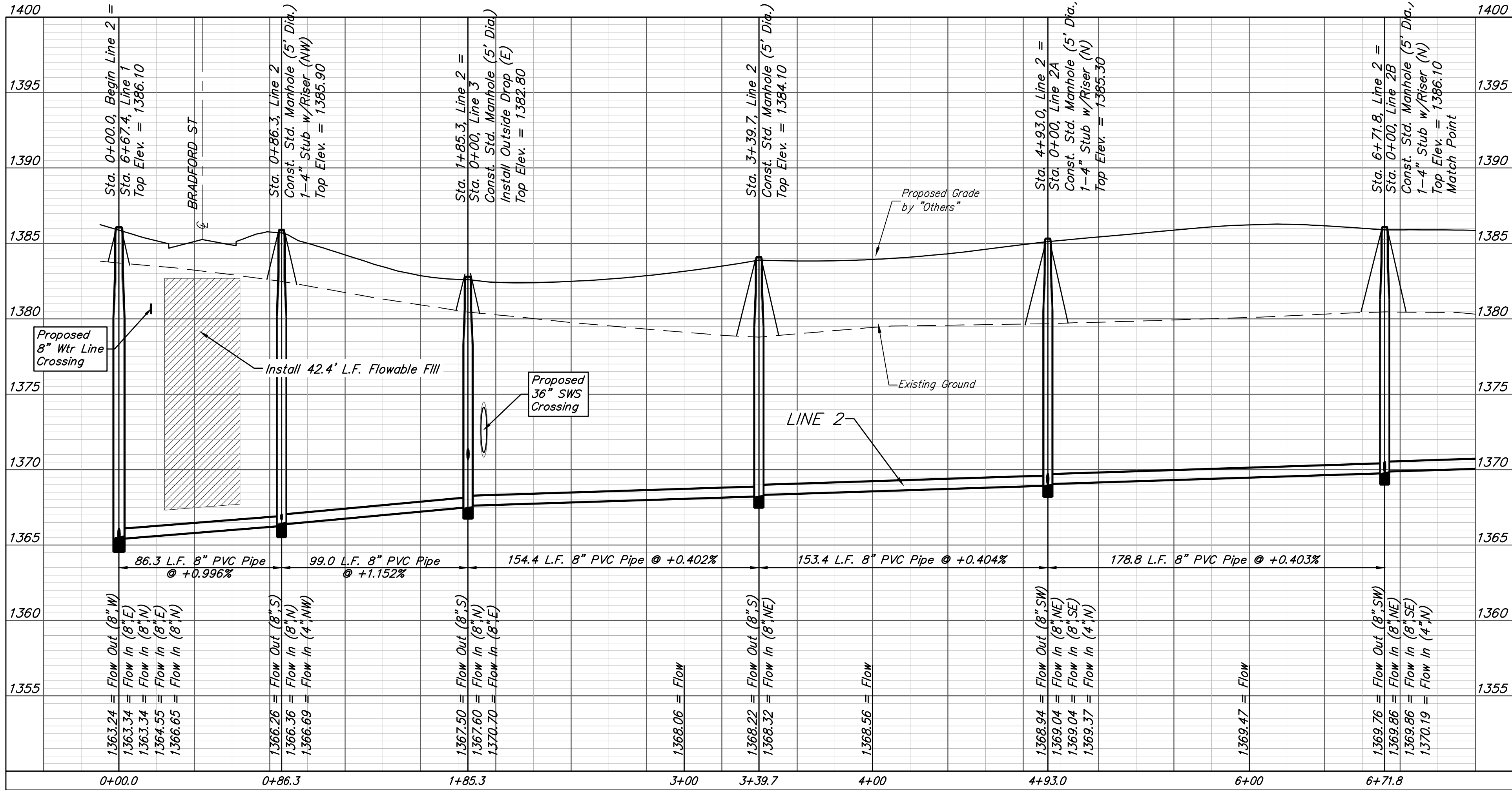
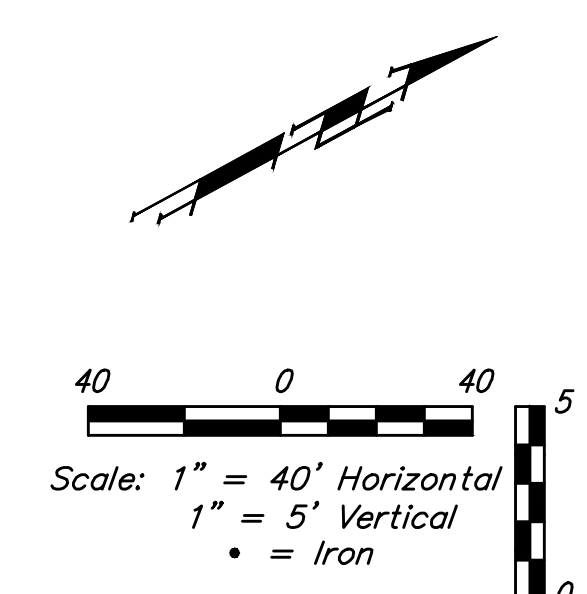
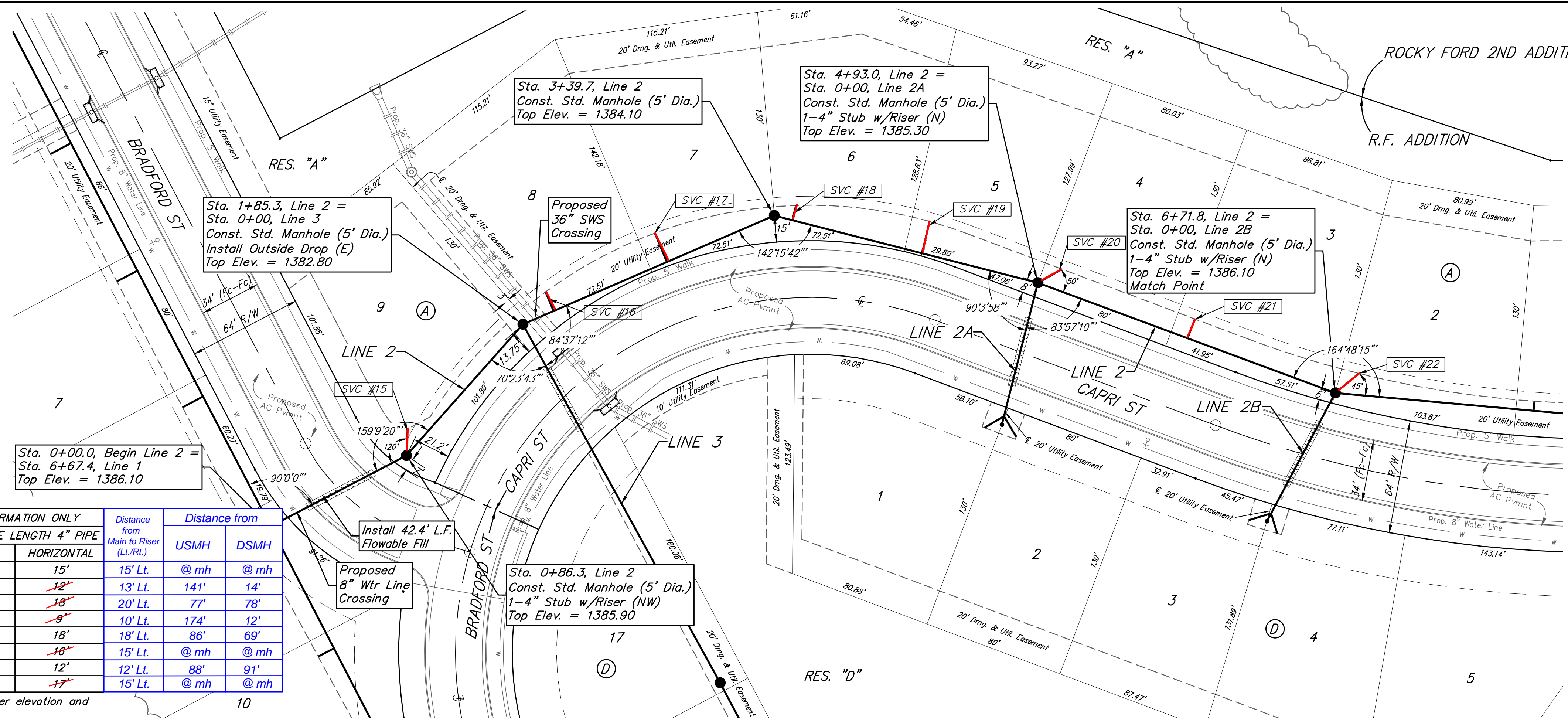
REVISIONS:

BENCHMARKS:
 #1: "□" CUT CHISELED ON CURB, 15.2' S. OF SW COR., LOT 14, BLOCK C, ROCKY FORD 2ND ADDITION. ELEV. = 1385.10 NAVD88
 #2: "□" CUT CHISELED ON CURB, 8.6' N. & 11.7' W. OF SW COR., LOT 14, BLOCK C, ROCKY FORD 2ND ADDITION. ELEV. = 1380.11 NAVD88

SEWER SERVICE TABLE

NUMBER	TYPE	LOCATION				FOR INFORMATION ONLY		Distance from Main to Riser (L/L/Rt)		Distance from USMH		Distance from DSMH	
		LOT NO.	BLOCK NO.	LINE NO.	STATION/DIRECTION	APPROXIMATE LENGTH 4" PIPE VERTICAL	HORIZONTAL			USMH	DSMH		
15	4" Stub	9	A	2	0+86.3/Lt	16.7'	15'	15' Lt.	@ mh	@ mh			
16	8" X 4" Tee	8	A	2	2+04.1/Lt.	10.1'	12'	13' Lt.	14'	14'			
17	8" X 4" Tee	7	A	2	2+73.7/Lt.	10.4'	18'	20' Lt.	77'	78'			
18	8" X 4" Tee	6	A	2	3+50.2/Lt.	10.7'	9'	10' Lt.	174'	12'			
19	8" X 4" Tee	5	A	2	4+25.6/Lt.	11.1'	18'	18' Lt.	86'	69'			
20	4" Stub	4	A	2	4+93.0/Lt.	11.5'	16'	15' Lt.	@ mh	@ mh			
21	8" X 4" Tee	3	A	2	5+83.0/Lt.	12.1'	12'	12' Lt.	88'	91'			
22	4" Stub	2	A	2	6+71.8/Lt.	11.4'	17'	15' Lt.	@ mh	@ mh			

NOTE: Vertical Riser Pipe shall be extended to 2' minimum above ground water elevation and 4' maximum below proposed ground elevation.

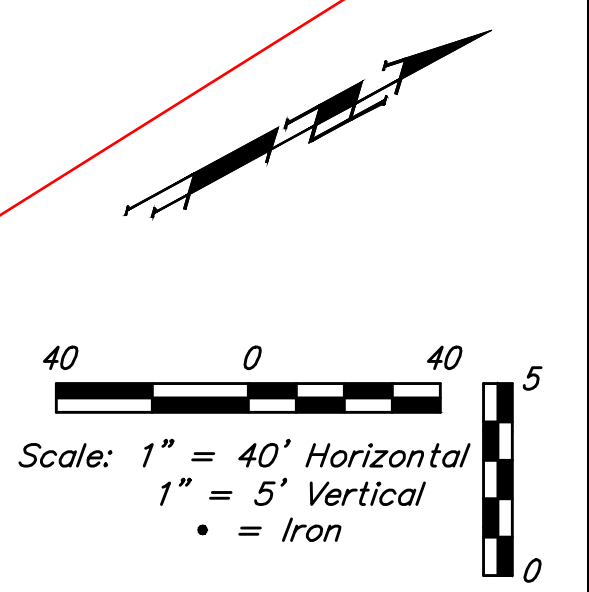
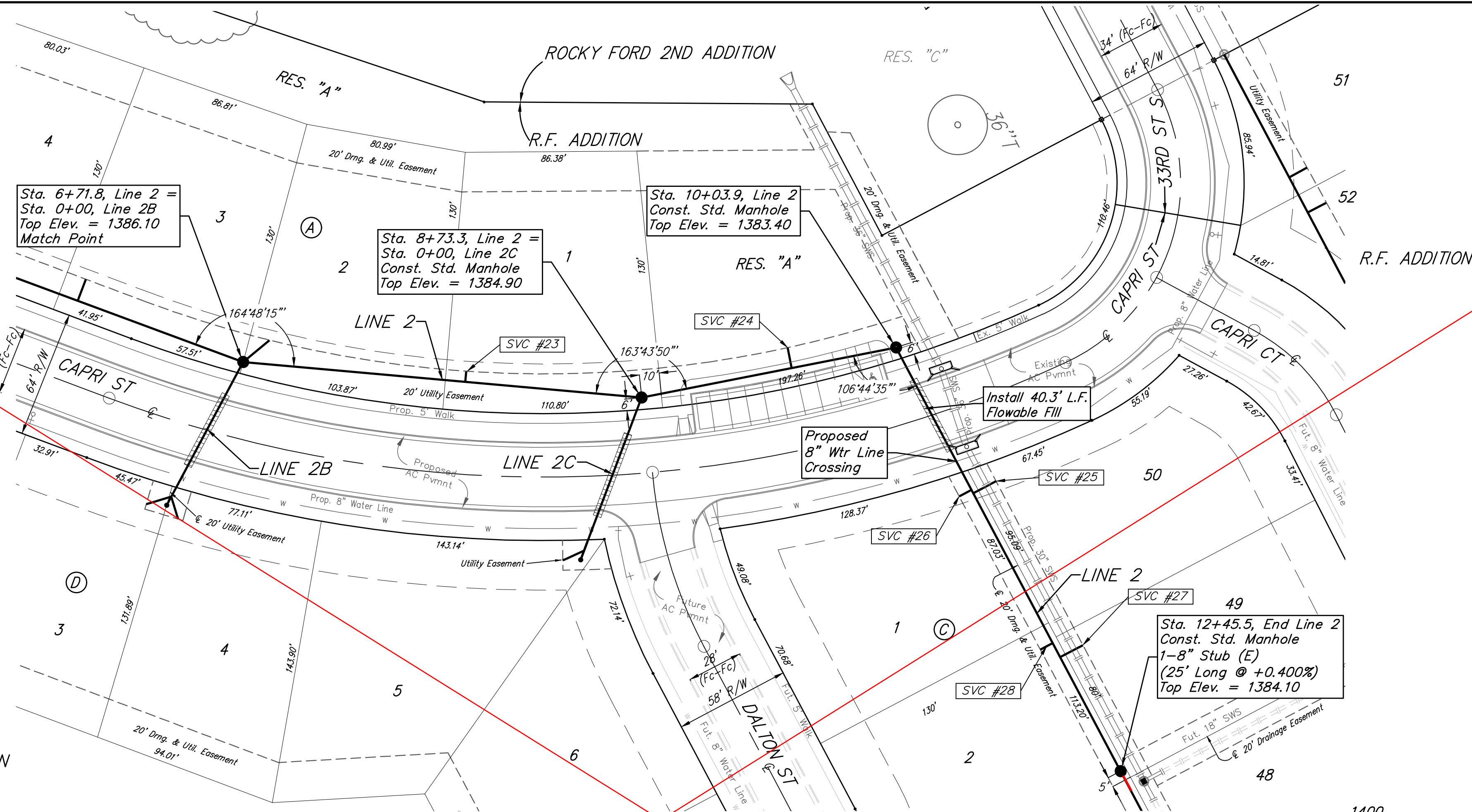


All trench and manhole excavation areas from Sta. 0+86.3 to Sta. 10+03.9, Line 2 shall be backfilled with sand. The sand backfill shall be water-jetted and vibrated during backfilling. All costs shall be paid for as L.F. "Fill, Sand (Flushed & Vibrated)".

Baughman R.F. Addition - Phase I
LINE 2
 Sanitary Sewer Improvements

PROJECT NUMBER: 468-2019-005338
 DESIGN: AEG
 DRAWN: HW
 APPROVED: [Signature]
 DATE: 3/9/20
 SCALE: Noted
 SHEET: 4 OF 21

BENCHMARKS:
 #1: "□" CUT CHISELED ON CURB,
 15.2' S. OF SW COR., LOT 14,
 BLOCK C, ROCKY FORD 2ND
 ADDITION.
 ELEV. = 1385.10 NAVD88
 #2: "□" CUT CHISELED ON CURB,
 8.6' N. & 11.7' W. OF SW COR.,
 LOT 14, BLOCK C, ROCKY FORD
 2ND ADDITION.
 ELEV. = 1380.11 NAVD88



SEE REVISED SHEET

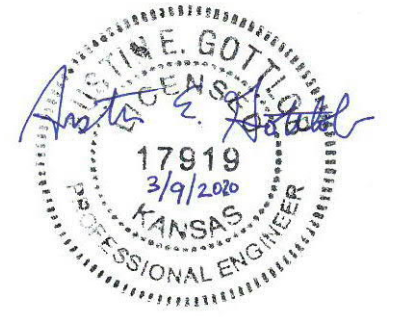
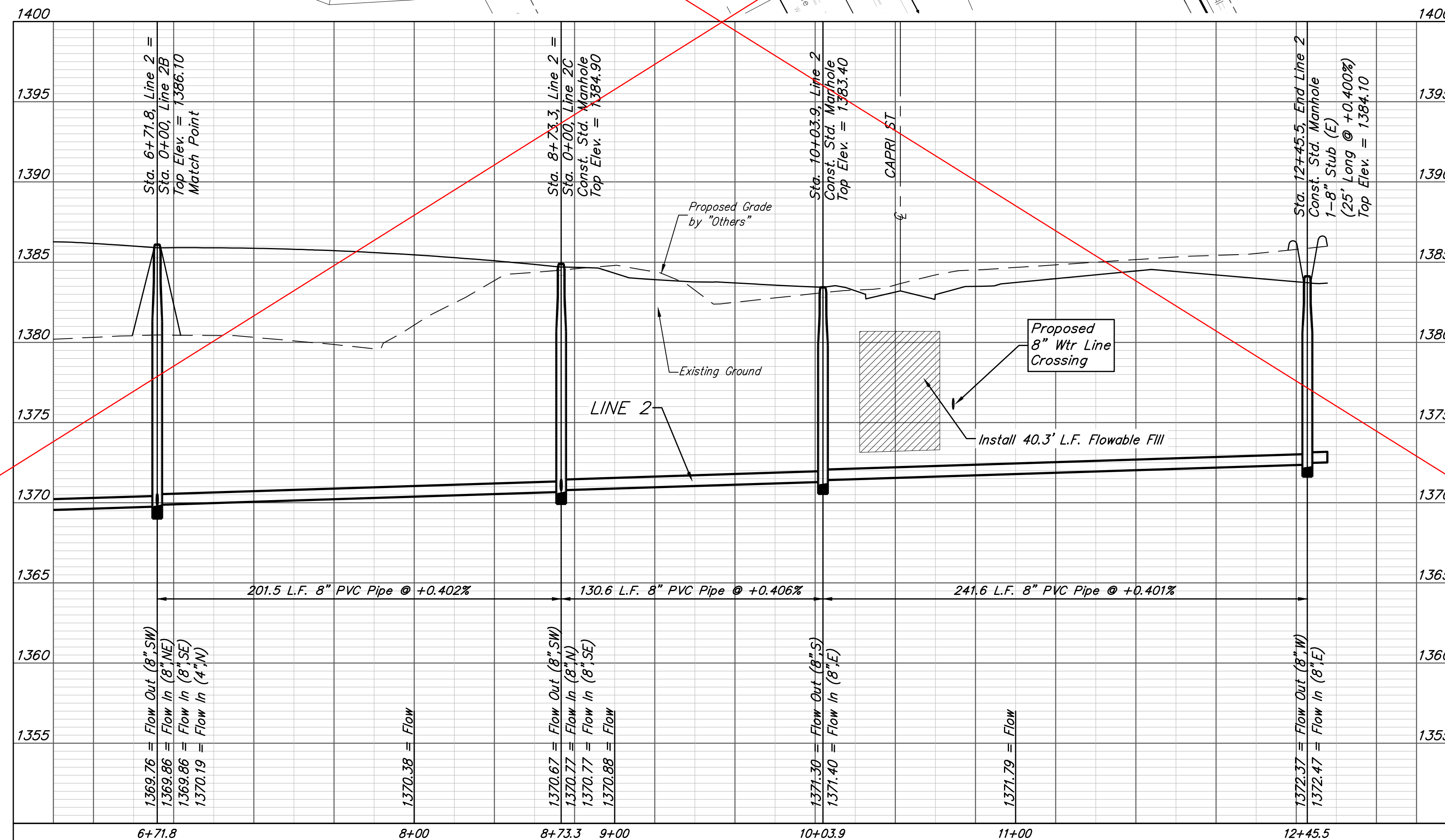
All trench and manhole excavation areas from Sta. 0+86.3 to Sta. 10+03.9, Line 2 shall be backfilled with sand. The sand backfill shall be water-jetted and vibrated during backfilling. All costs shall be paid for as L.F. "Fill, Sand (Flushed & Vibrated)".

SEWER SERVICE TABLE

NUMBER	TYPE	LOCATION				FOR INFORMATION ONLY	
		LOT NO.	BLOCK NO.	LINE NO.	STATION/DIRECTION	APPROXIMATE LENGTH 4" PIPE VERTICAL	HORIZONTAL
23	8" X 4" Tee	1	A	2	7+84.1/Lt.	10.4'	5'
24	8" X 4" Tee	RES A	-	2	9+50.4/Lt.	7.6'	10'
25	8" X 4" Tee	50	C	2	10+87.0/Lt.	6.7'	13'
26	8" X 4" Tee	1	C	2	10+85.0/Rt.	6.8'	7'
27	8" X 4" Tee	49	C	2	11+80.5/Lt.	7.5'	13'
28	8" X 4" Tee	2	C	2	11+72.5/Rt.	7.8'	7'

NOTE: Vertical Riser Pipe shall be extended to 2' minimum above ground water elevation and 4' maximum below proposed ground elevation.

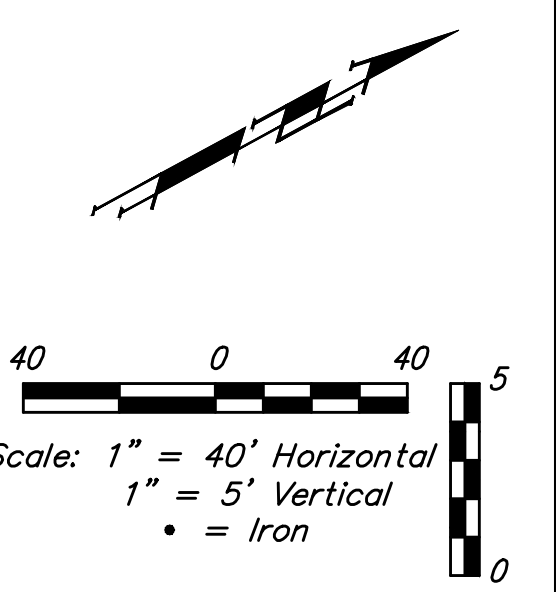
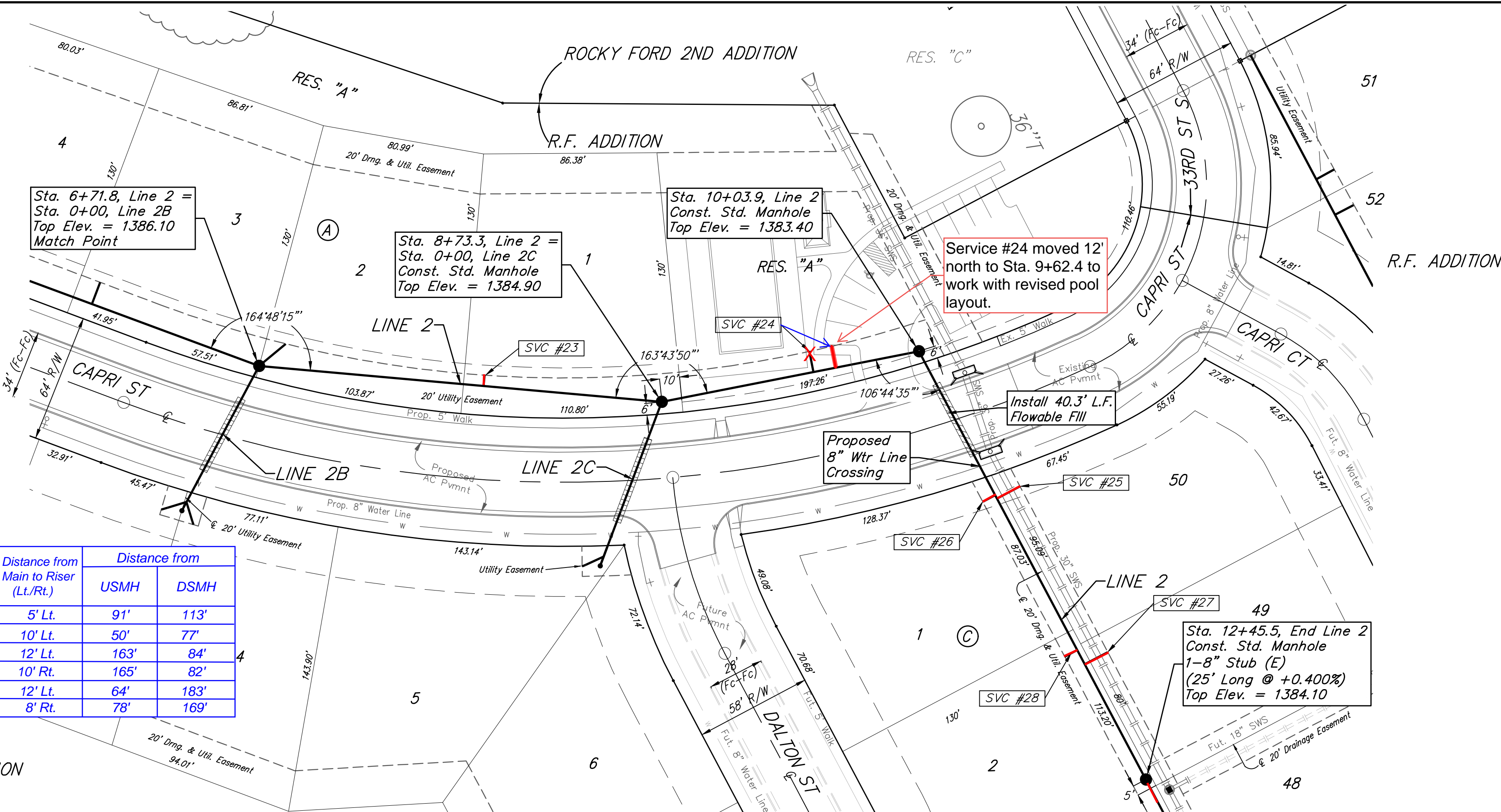
R.F. ADDITION



Baughman		R.F. Addition - Phase I	
		LINE 2	
		Sanitary Sewer Improvements	
Baughman Company, P.A. 315 Ellis St. Wichita, KS 67211 P 316-262-7271 F 316-262-0149 ENGINEERING SURVEYING PLANNING LANDSCAPE ARCHITECTURE			
PROJECT NUMBER 468-2019-005338	DESIGN AEG	DRAWN HIW	DATE 3/9/20
REVISIONS:	APPROVED	SCALE Noted	SHEET
			5 OF 21

BENCHMARKS:
 #1: "□" CUT CHISELED ON CURB,
 15.2' S. OF SW COR., LOT 14,
 BLOCK C, ROCKY FORD 2ND
 ADDITION.
 ELEV. = 1385.10 NAVD88

#2: "□" CUT CHISELED ON CURB,
 8.6' N. & 11.7' W. OF SW COR.,
 LOT 14, BLOCK C, ROCKY FORD
 2ND ADDITION.
 ELEV. = 1380.11 NAVD88

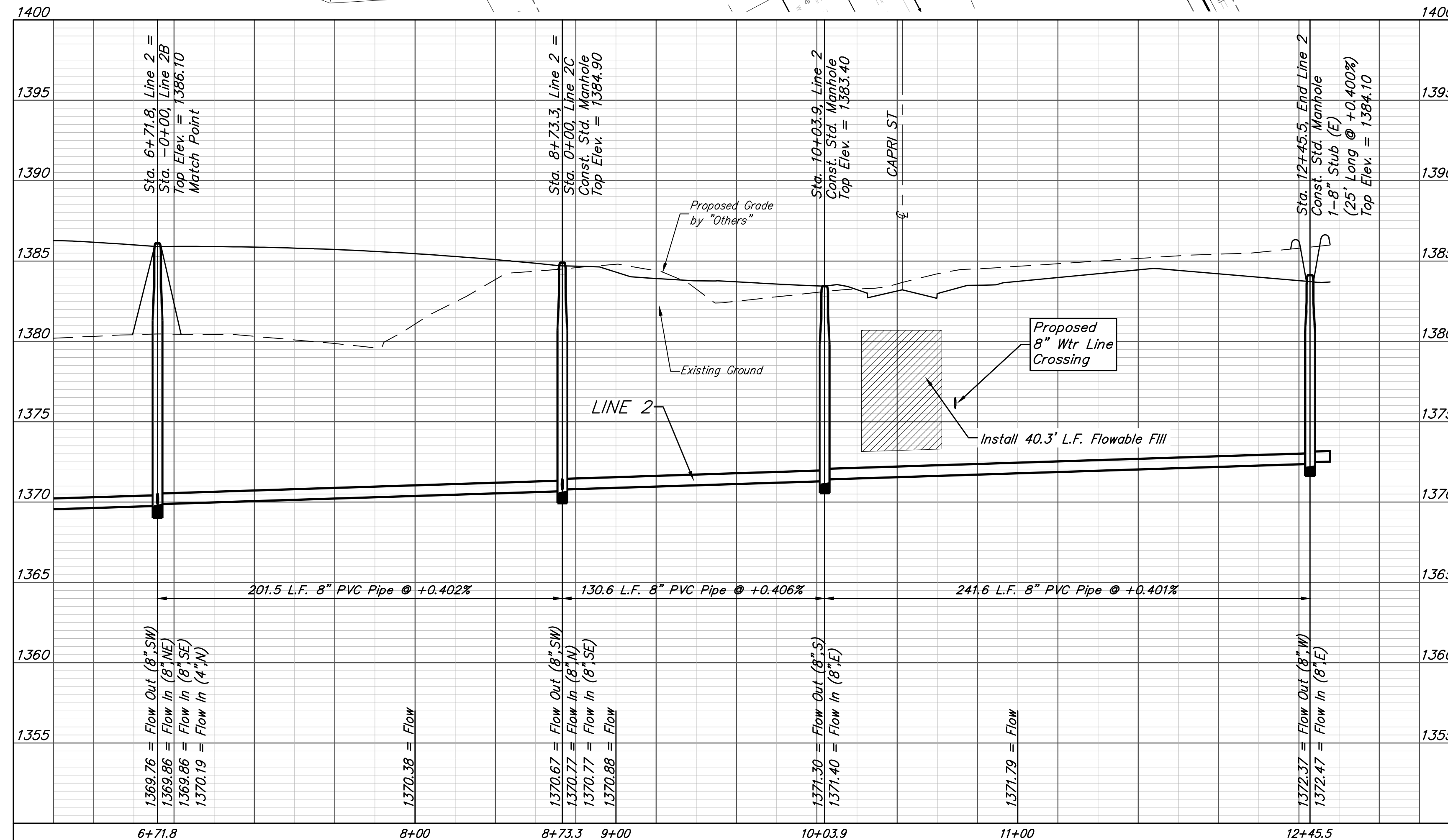


SEWER SERVICE TABLE

NUMBER	TYPE	LOCATION				FOR INFORMATION ONLY		Distance from		
		LOT NO.	BLOCK NO.	LINE NO.	STATION/DIRECTION	APPROXIMATE LENGTH 4" PIPE	VERTICAL	HORIZONTAL	Main to Riser (Lt./Rt.)	USMH
23	8" X 4" Tee	1	A	2	7+84.1/Lt.	10.4'	5'	5' Lt.	91'	113'
24	8" X 4" Tee	RES A	-	2	9+50.4/Lt.	7.6'	10'	10' Lt.	50'	77'
25	8" X 4" Tee	50	C	2	10+87.0/Lt.	6.7'	13'	12' Lt.	163'	84'
26	8" X 4" Tee	1	C	2	10+85.0/Rt.	6.8'	7'	10' Rt.	165'	82'
27	8" X 4" Tee	49	C	2	11+80.5/Lt.	7.5'	13'	12' Lt.	64'	183'
28	8" X 4" Tee	2	C	2	11+72.5/Rt.	7.8'	7'	8' Rt.	78'	169'

NOTE: Vertical Riser Pipe shall be extended to 2' minimum above ground water elevation and 4' maximum below proposed ground elevation.

All trench and manhole excavation areas from Sta. 9+68.9 to Sta. 10+03.9, Line 1 shall be backfilled with sand. The sand backfill shall be water-jetted and vibrated during backfilling. All costs shall be paid for as L.F. "Fill, Sand (Flushed & Vibrated)".

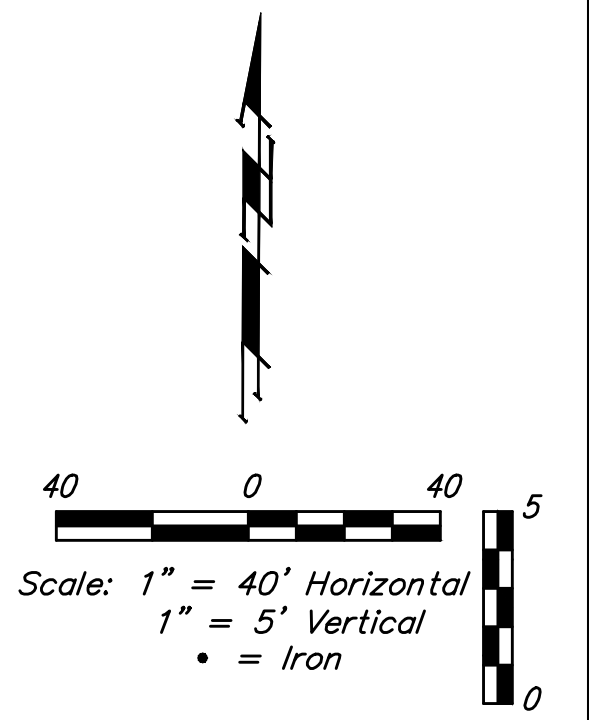
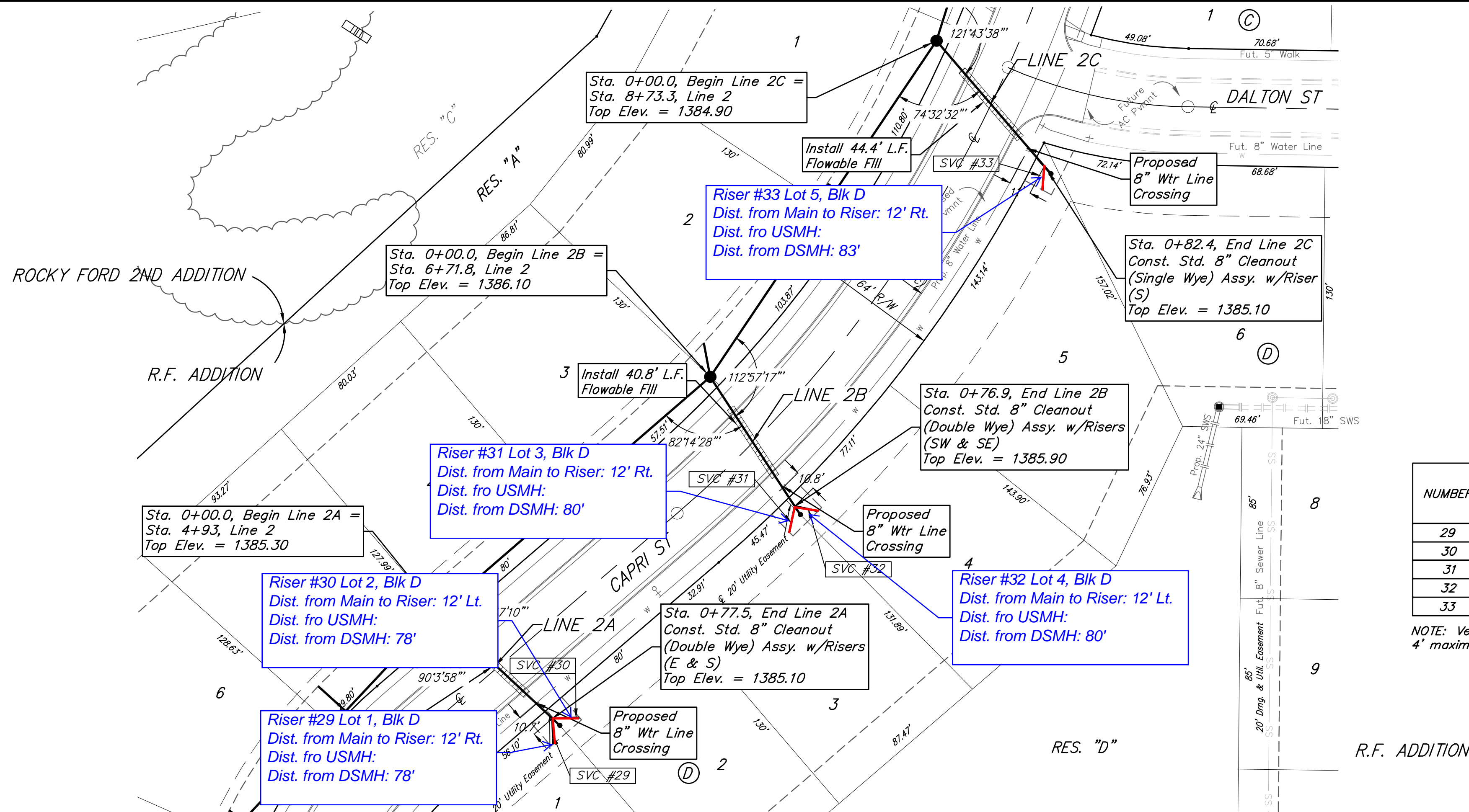


Baughman R.F. Addition - Phase I
LINE 2
 Sanitary Sewer Improvements

Baughman Company, P.A. 315 Ellis St. Wichita, KS 67211 P 316-262-7271 F 316-262-0149
 ENGINEERING | SURVEYING | PLANNING | LANDSCAPE ARCHITECTURE

PROJECT NUMBER: 468-2019-005338
 DESIGN: AEG
 DRAWN: HIW
 APPROVED: DATE: 3/9/20
 REVISIONS: Revised 5-13-20 by AEG
 SCALE: Noted
 SHEET: 5 OF 21

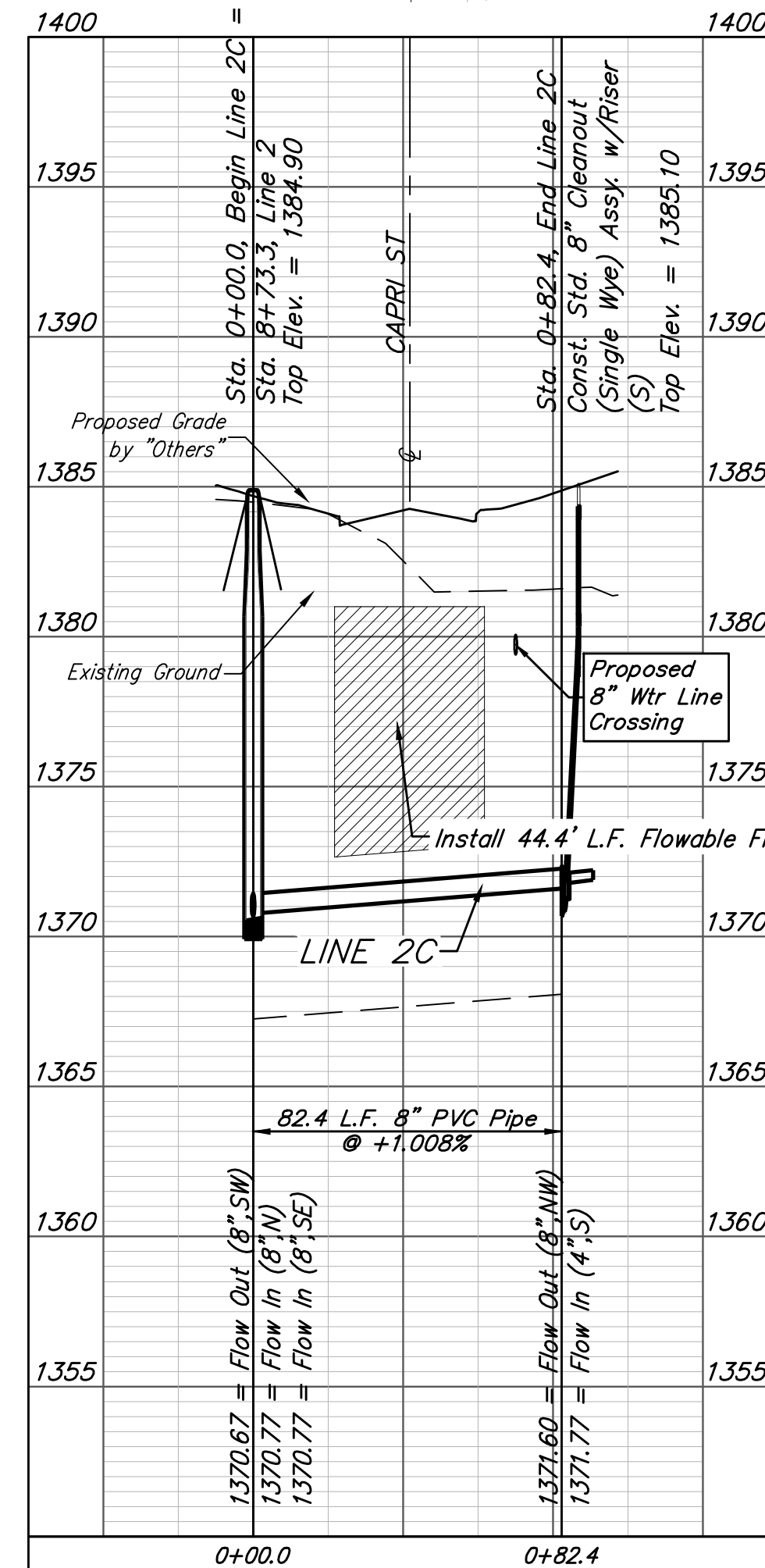
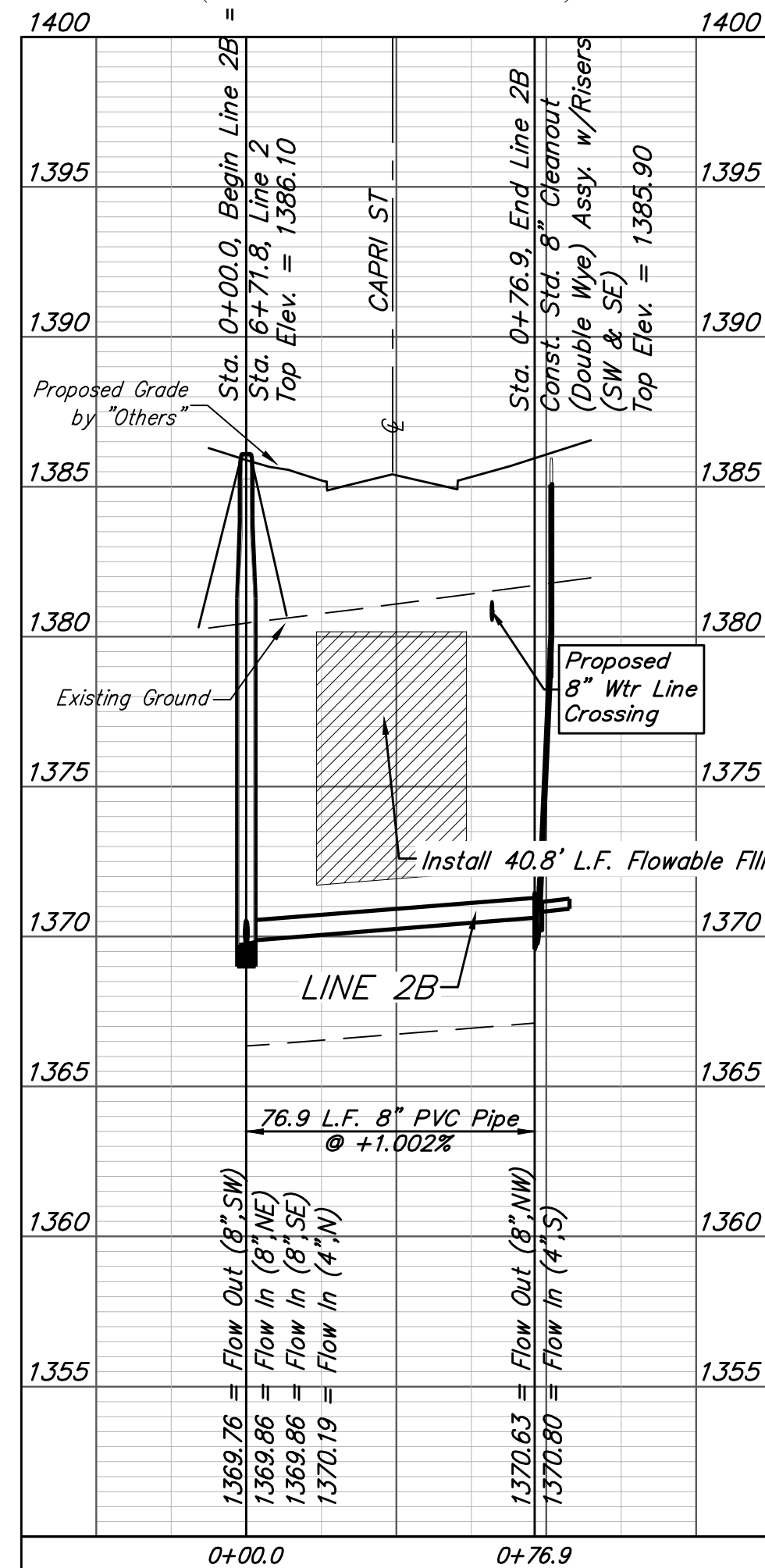
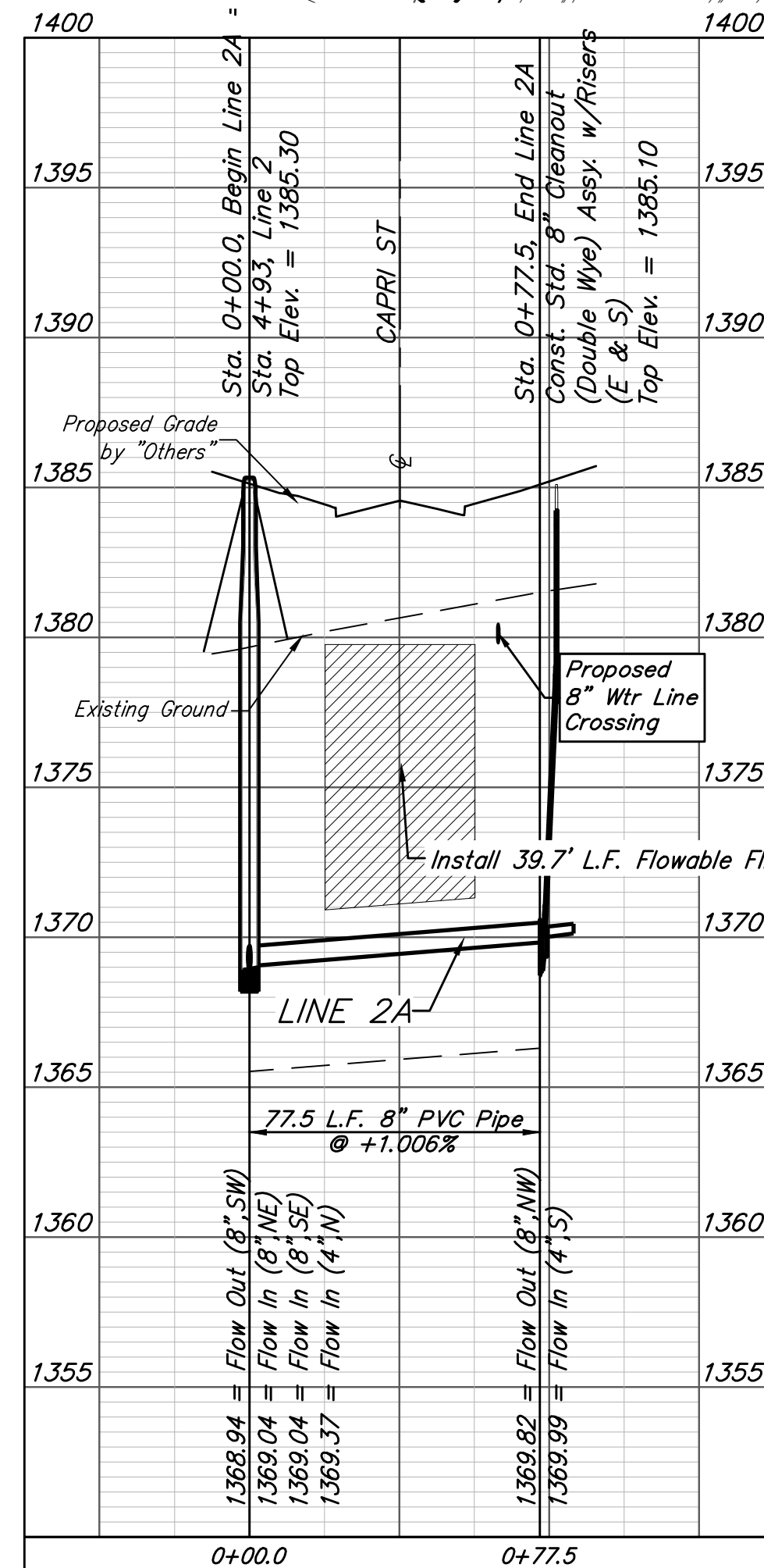
BENCHMARKS:
 #1: "□" CUT CHISELED ON CURB,
 15.2' S. OF SW COR., LOT 14,
 BLOCK C, ROCKY FORD 2ND
 ADDITION.
 ELEV. = 1385.10 NAVD88
 #2: "□" CUT CHISELED ON CURB,
 8.6' N. & 11.7' W. OF SW COR.,
 LOT 14, BLOCK C, ROCKY FORD
 2ND ADDITION.
 ELEV. = 1380.11 NAVD88



SEWER SERVICE TABLE

NUMBER	TYPE	LOCATION				FOR INFORMATION ONLY	
		LOT NO.	BLOCK NO.	LINE NO.	STATION/DIRECTION	APPROXIMATE LENGTH 4" PIPE	
29	Cleanout	1	D	2A	0+77.5/Rt.	10.3'	12' 13"
30	Cleanout	2	D	2A	0+77.5/Lt.	10.5'	12' 14"
31	Cleanout	3	D	2B	0+76.9/Rt.	10.4'	12' 13"
32	Cleanout	4	D	2B	0+76.9/Lt.	10.4'	12'
33	Cleanout	5	D	2C	0+82.4/Rt.	8.3'	12'

NOTE: Vertical Riser Pipe shall be extended to 2' minimum above ground water elevation and 4' maximum below proposed ground elevation.



Baughman R.F. Addition - Phase I
LINE 2A, 2B, & 2C
 Sanitary Sewer Improvements

Baughman Company, P.A. 315 Ellis St. Wichita, KS 67211 P 316-262-7271 F 316-262-0149
 ENGINEERING | SURVEYING | PLANNING | LANDSCAPE ARCHITECTURE

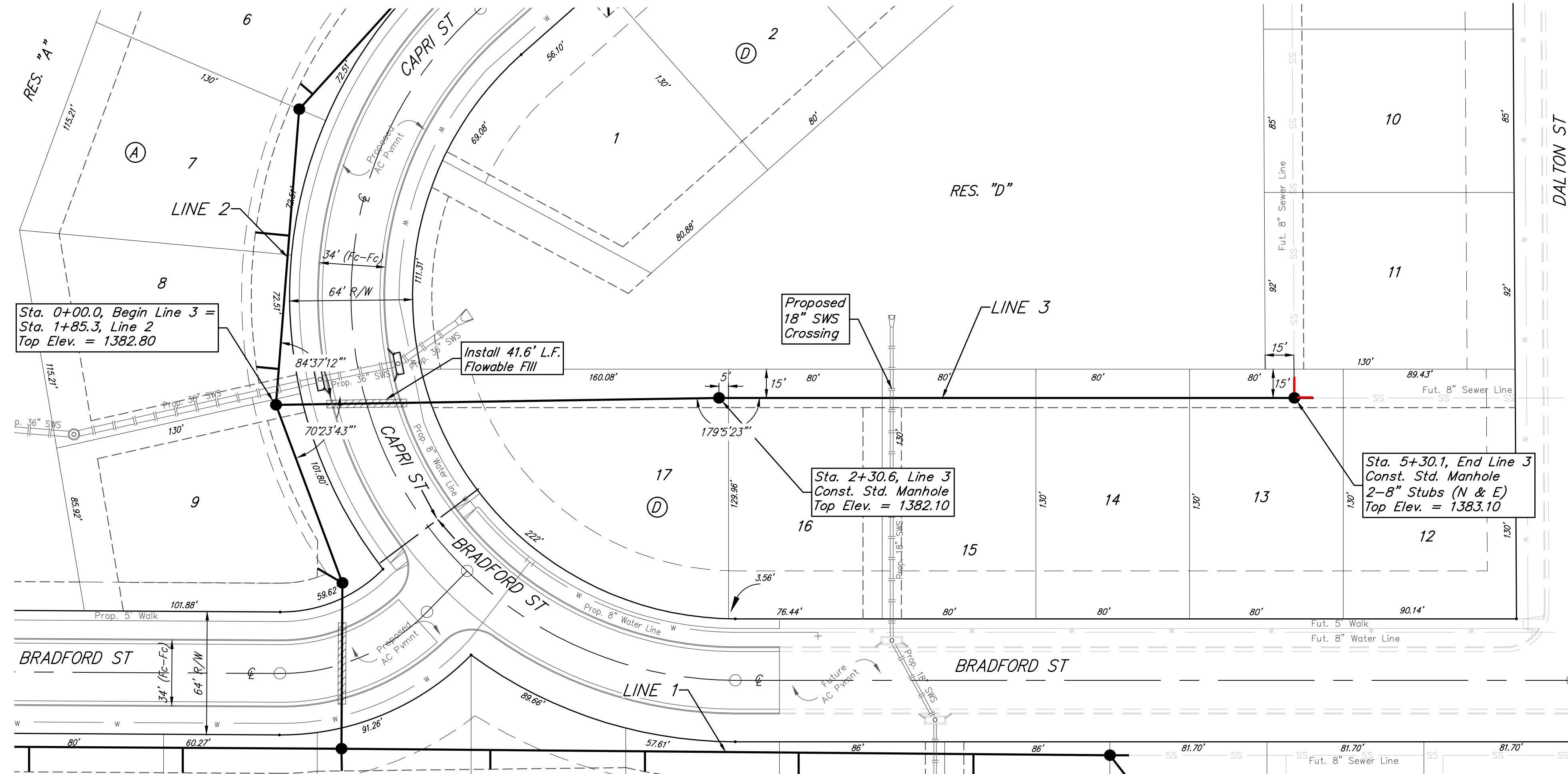
PROJECT NUMBER 468-2019-005338	DESIGN AEG	DRAWN HIW
REVISIONS:	APPROVED	DATE 3/9/20
	SCALE Noted	SHEET

6 OF 21

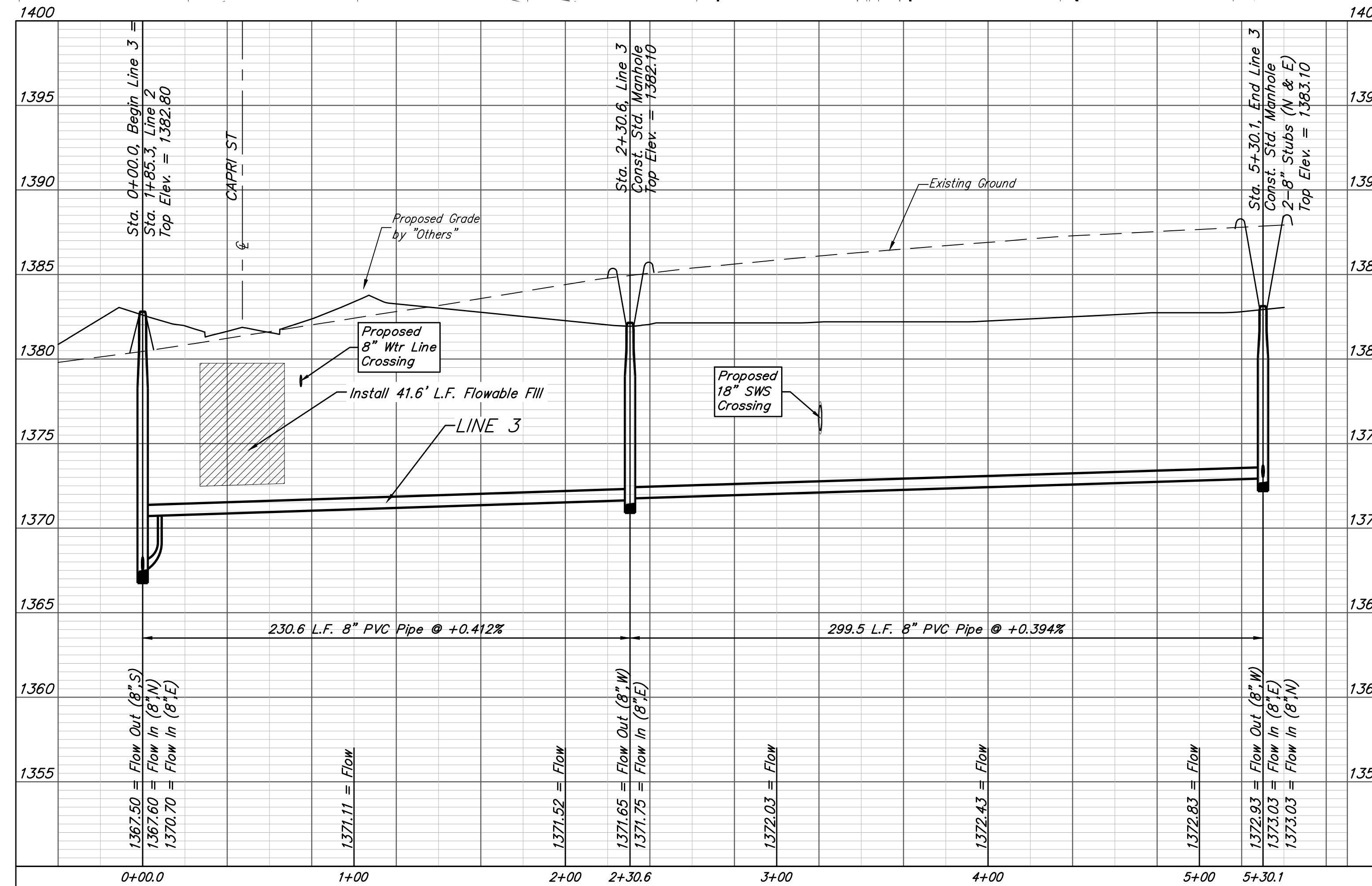
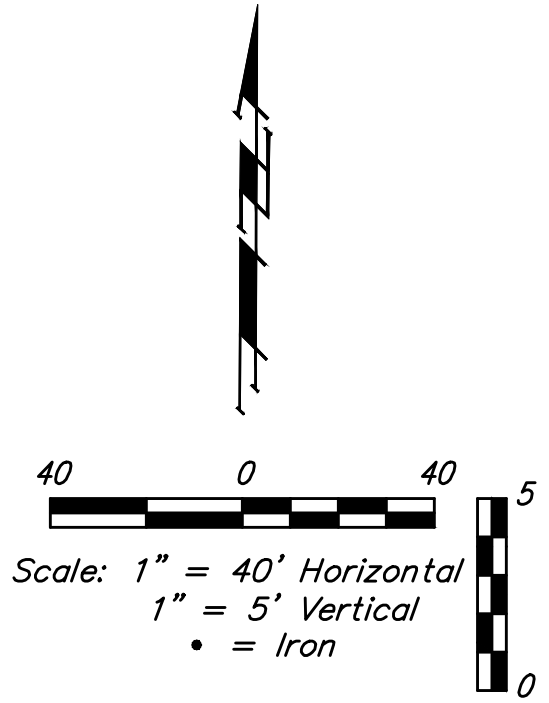
E:\Projects\R.F. Addition_1802\357\Engineering\Phase I\SS\SS PLANS.dwg

BENCHMARKS:
 #1: "□" CUT CHISELED ON CURB,
 15.2' S. OF SW COR., LOT 14,
 BLOCK C, ROCKY FORD 2ND
 ADDITION.
 ELEV. = 1385.10 NAVD88
 #2: "□" CUT CHISELED ON CURB,
 8.6' N. & 11.7' W. OF SW COR.,
 LOT 14, BLOCK C, ROCKY FORD
 2ND ADDITION.
 ELEV. = 1380.11 NAVD88

R.F. ADDITION

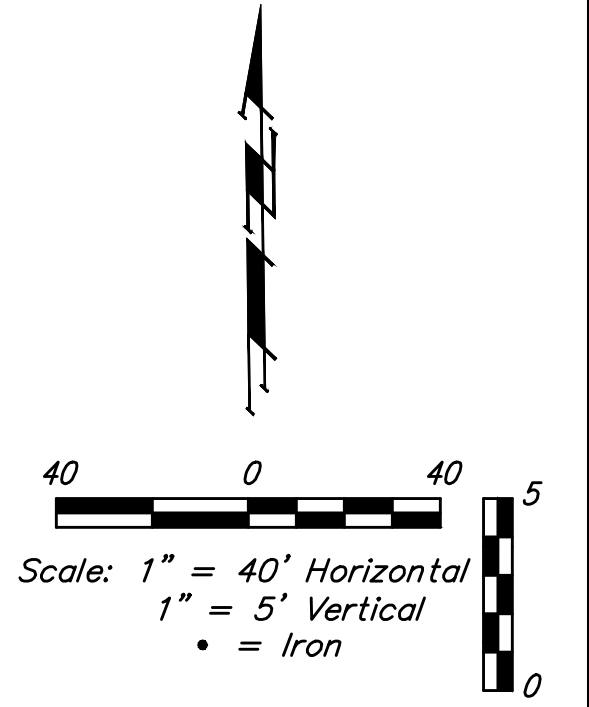
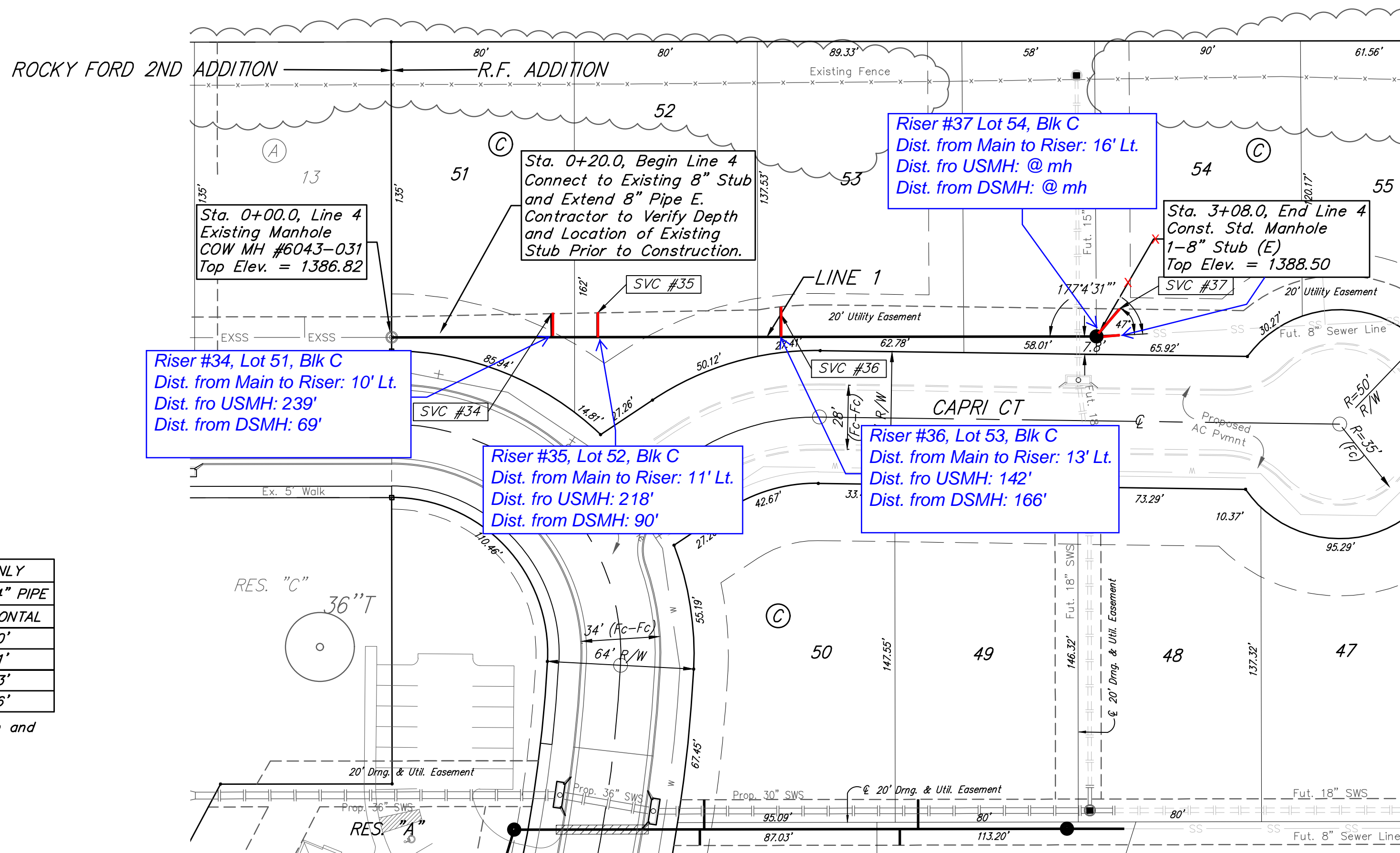


R.F. ADDITION



		R.F. Addition - Phase I	
		LINE 3	
Sanitary Sewer Improvements		Baughman Company, P.A. 315 Ellis St. Wichita, KS 67211 P 316-262-7271 F 316-262-0149	
PROJECT NUMBER 468-2019-005338		DESIGN AEG	DRAWN HIW
REVISIONS:		APPROVED	DATE 3/9/20
		SCALE Noted	
		SHEET	7 OF 21

BENCHMARKS:
 #1: "□" CUT CHISELED ON CURB,
 15.2' S. OF SW COR., LOT 14,
 BLOCK C, ROCKY FORD 2ND
 ADDITION.
 ELEV. = 1385.10 NAVD88
 #2: "□" CUT CHISELED ON CURB,
 8.6' N. & 11.7' W. OF SW COR.,
 LOT 14, BLOCK C, ROCKY FORD
 2ND ADDITION.
 ELEV. = 1380.11 NAVD88

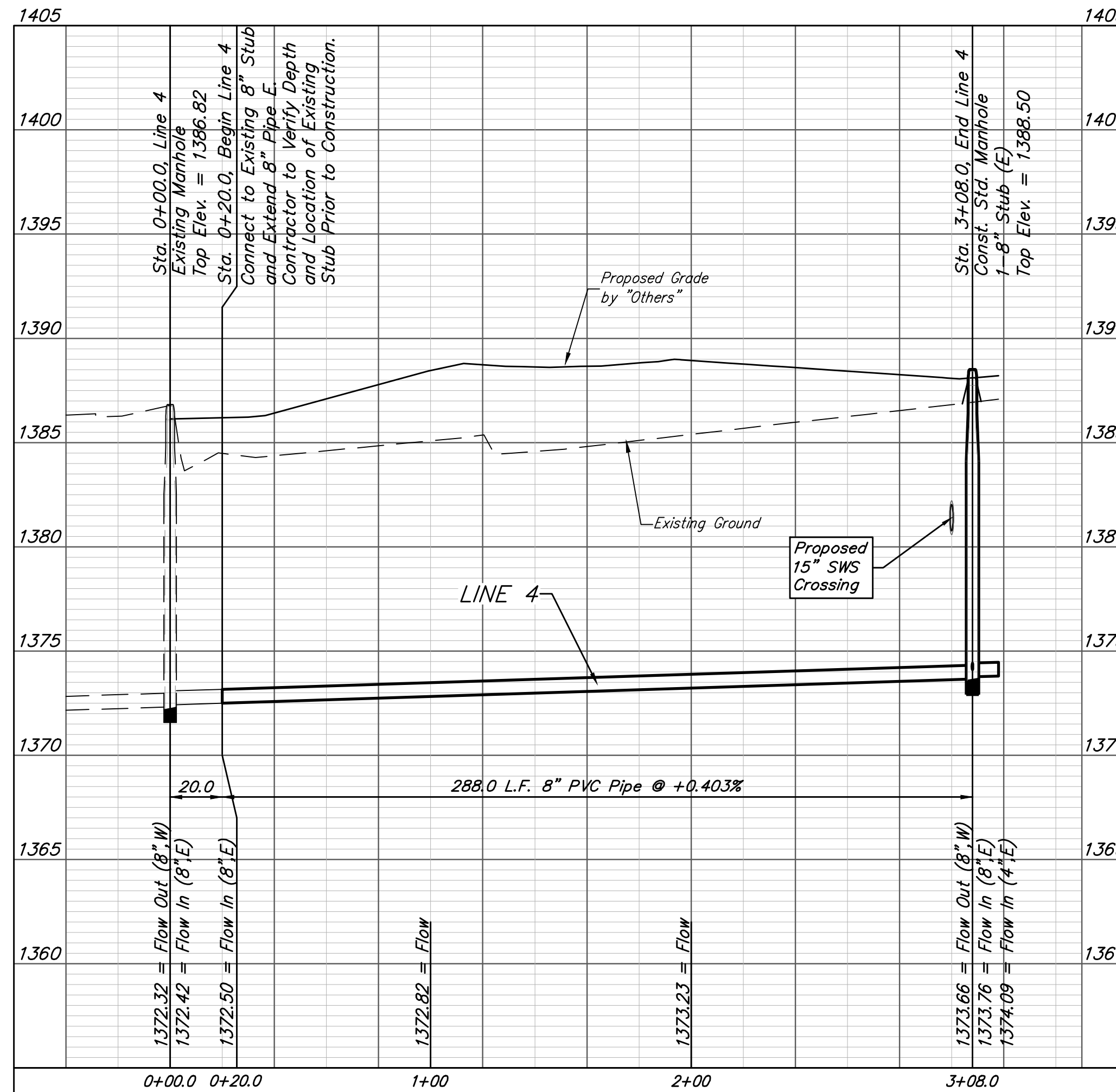


SEWER SERVICE TABLE

NUMBER	TYPE	LOCATION				FOR INFORMATION ONLY	
		LOT NO.	BLOCK NO.	LINE NO.	STATION/ DIRECTION	APPROXIMATE LENGTH 4" PIPE	
34	8" X 4" Tee	51	C	4	0+70.0/Lt.	9.4'	10'
35	8" X 4" Tee	52	C	4	0+90.0/Lt.	10.0	11'
36	8" X 4" Tee	53	C	4	1+70.0/Lt.	11.1'	13'
37	4" Stub	54	C	4	3+08.0/Lt.	9.9'	16'

NOTE: Vertical Riser Pipe shall be extended to 2' minimum above ground water elevation and 4' maximum below proposed ground elevation.

All trench and manhole excavation areas from Sta. 0+20.0 to Sta. 3+08.0, Line 4 shall be backfilled with sand. The sand backfill shall be water-jetted and vibrated during backfilling. All costs shall be paid for as L.F. "Fill, Sand (Flushed & Vibrated)".



R.F. ADDITION



Baughman		R.F. Addition - Phase I	
		LINE 4	
		Sanitary Sewer Improvements	
Baughman Company, P.A. 315 Ellis St. Wichita, KS 67211 P 316-262-7271 F 316-262-0149 ENGINEERING SURVEYING PLANNING LANDSCAPE ARCHITECTURE			
PROJECT NUMBER 468-2019-005338	DESIGN AEG	DRAWN HIW	DATE 3/9/20
REVISIONS:	SCALE Noted		
	SHEET		
	8 OF 21		