

TERRACE DRIVE SANITARY SEWER and WATER LINE IMPROVEMENTS

CITY OF WICHITA, KANSAS

Gary Janzen, P.E. City Engineer

SANITARY SEWER PROJECT

Project Number
468-85354
OCA Number
628120

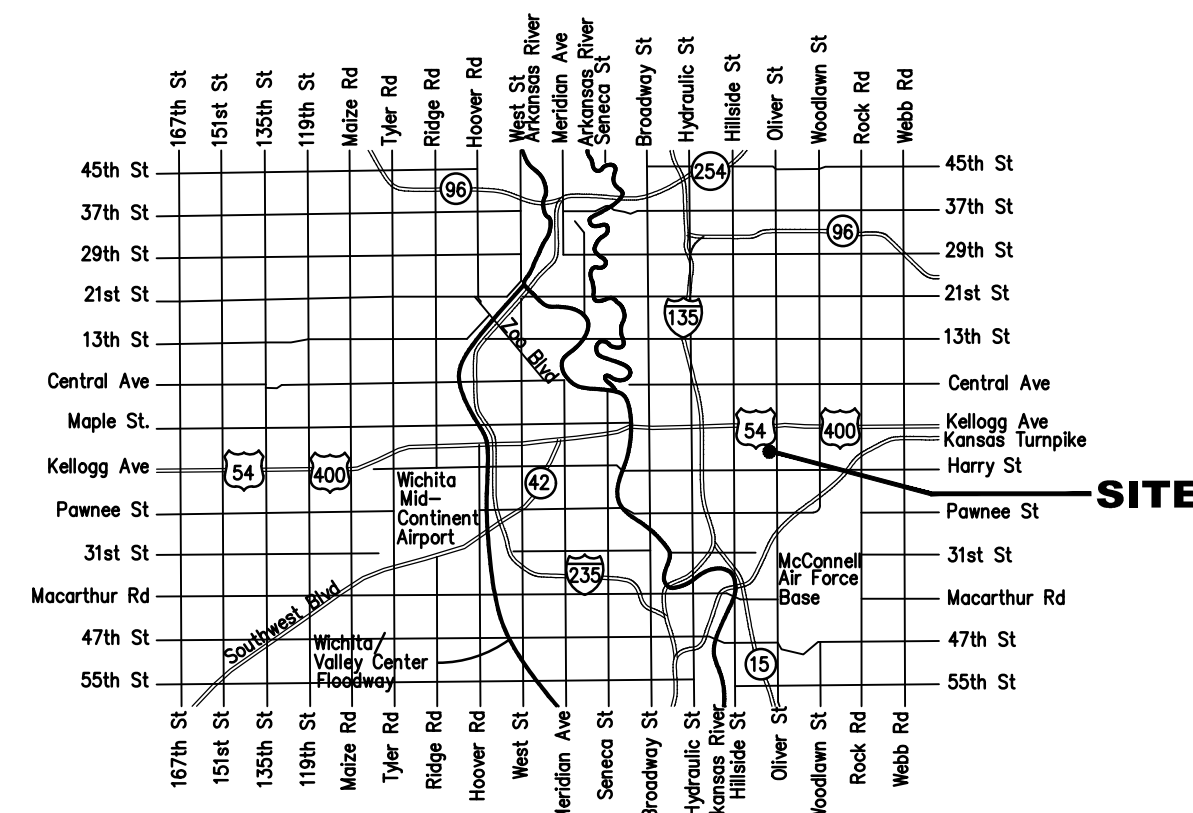
~~WATER LINE PROJECT~~

~~Project Number
448-90923
OCA Number
638109~~

Dondlinger - Contractor
K. Yale - City of Wichita, Field Project Engineer
S. May - City of Wichita, Inspector
As-built
Stubs
Release Date (for connection purposes only): 12/17/2019
pdf: 12/18/2019 apr

SHEET INDEX

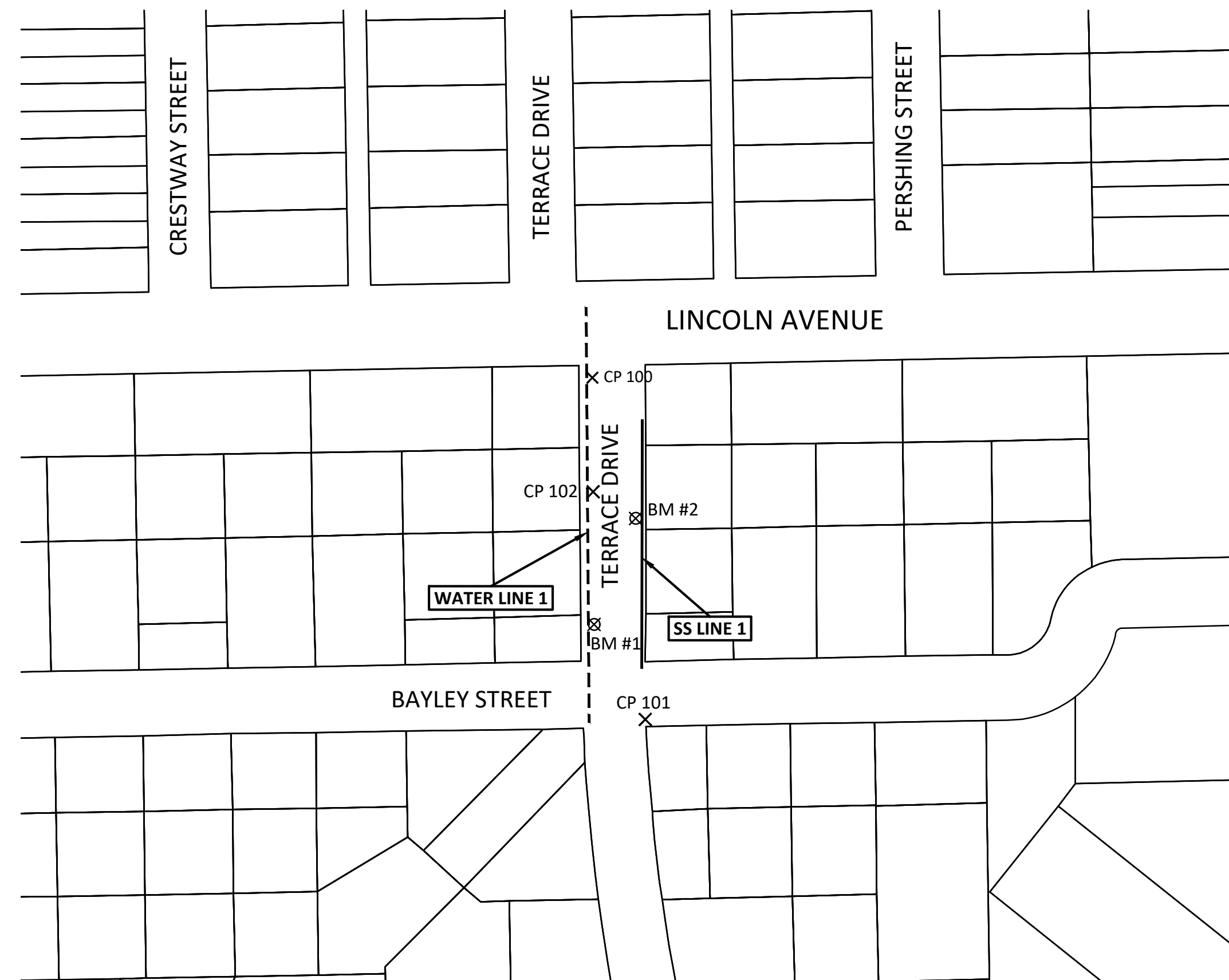
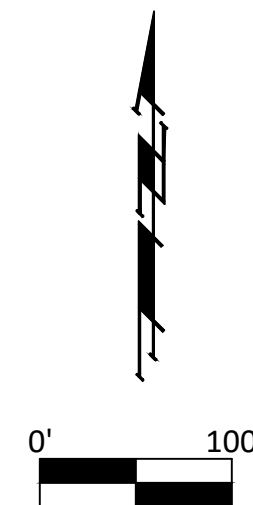
1	Title Sheet
2	General Notepage
3	Sanitary Sewer Plan/Profile
4	Water Line Plan/Profile
5-7	Standard Sanitary Sewer Details
8-10	Standard Water Details
11-15	Erosion Control Details



VICINITY MAP

CONTROL POINTS

- CP 100 - Chiseled "X" on the Top Curb
N-1680611.437
E-1664335.166
- CP 101 - Chiseled "X" on the Top Curb
N-1680306.071
E-1664378.485
- CP 102 - Chiseled "X" on the Top Curb
N-1680511.387
E-1664336.483

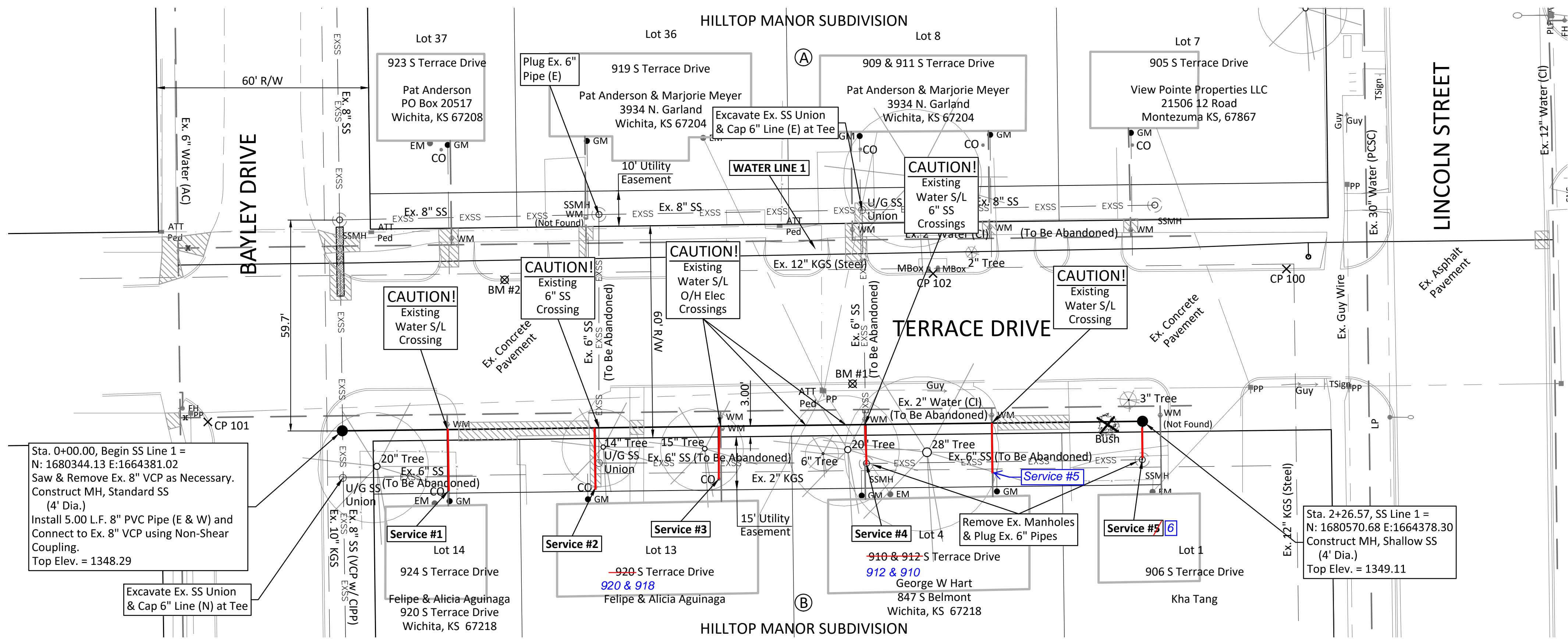
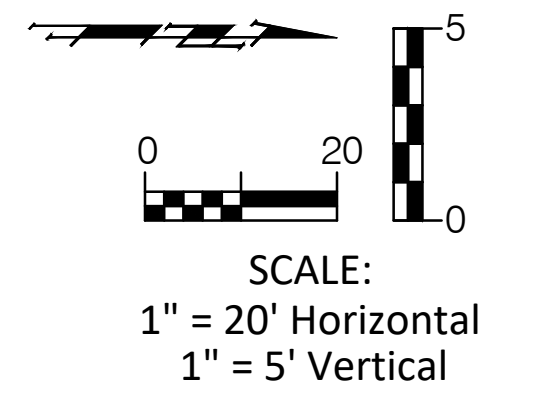


BENCHMARKS

- BM #1 - Chiseled "X" on the Top of the East Curb of Terrace Drive
8' North of Power Pole.
Elev. = 1348.32 (NAVD 88)
- BM #2 - Chiseled "X" on the Top of the West Curb of Terrace Drive
in Front of 923 East Terrace Drive.
Elev. = 1347.72 (NAVD 88)



BENCHMARK:
 BM #1 - Chiseled "X" on the Top of the East Curb of Terrace Drive
 8' North of Power Pole.
 Elev. = 1348.32 (NAVD 88)
 BM #2 - Chiseled "X" on the Top of the West Curb of Terrace Drive
 in Front of 923 East Terrace Drive.
 Elev. = 1347.72 (NAVD 88)



Note:
 Pavement, Sidewalks, Etc.
 To Be Removed Are
 Indicated By:

Sta. 0+00.00, Begin SS Line 1 =
 N: 1680344.13 E:1664381.02
 Saw & Remove Ex. 8" VCP as Necessary.
 Construct MH, Standard SS
 (4' Dia.)
 Install 5.00 L.F. 8" PVC Pipe (E & W) and
 Connect to Ex. 8" VCP using Non-Shear
 Coupling.
 Top Elev. = 1348.29

Sta. 2+26.57, SS Line 1 =
 N: 1680570.68 E:1664378.30
 Construct MH, Shallow SS
 (4' Dia.)
 Top Elev. = 1349.11

All Costs Associated with the Plugging and
 Capping of the Existing 6" SS Lines Shall be
 SUBSIDIARY to the Bid Item "Manhole Removed".

Note:
 Trees/Shrubs to be
 removed are marked thus:

Cost to be SUBSIDIARY to
 "Site Clearing" Bid Item.

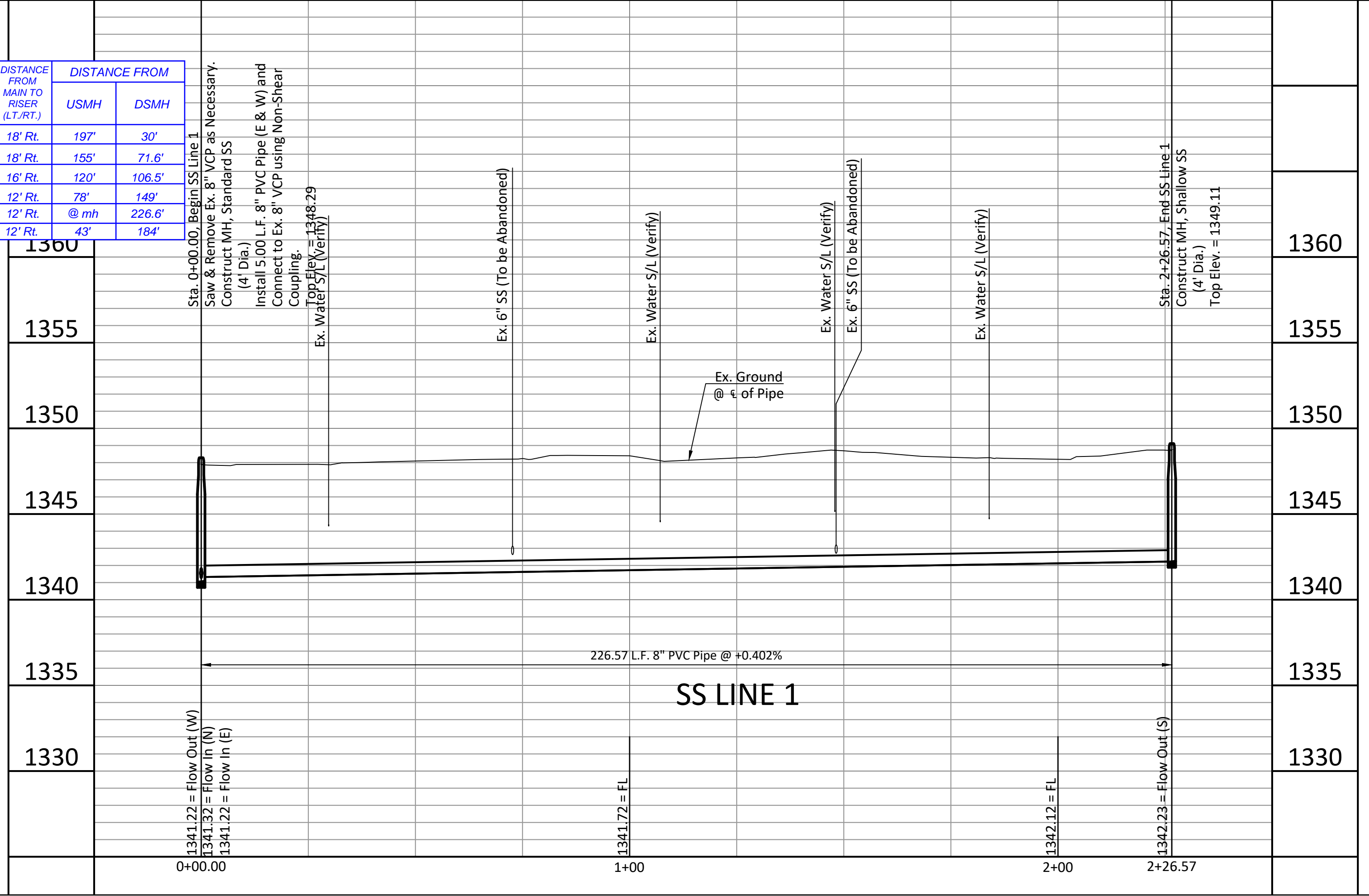


SS LINE 1

SEWER SERVICE TABLE

NUMBER	TYPE	LOCATION			FOR INFORMATION ONLY		DISTANCE FROM MAIN TO RISER (L.T./R.T.)		DISTANCE FROM	
		LOT NO.	BLOCK NO.	LINE NO.	STATION/ DIRECTION	APPROXIMATE LENGTH 4" PIPE VERTICAL	HORIZONTAL	USMH	DSMH	
1	4" Stub	14	B	1	0+29.77/Rt.	2'	18'	18' Rt.	197'	30'
2*	4" Stub	13	B	1	0+71.57/Rt.	2'	18'	18' Rt.	155'	71.6'
3	4" Stub	13	B	1	1+06.46/Rt.	2' 1.6'	16'	16' Rt.	120'	106.5'
4	4" Stub	4	B	1	1+48.26/Rt.	2' 2.4'	12'	12' Rt.	78'	149'
5	4" MH Stub	1	B	1	2+26.57/Rt.	2'	12'	12' Rt.	@ mh	226.6'
6	4" Stub	4	B	1	1+83.8/Rt.		12'	12' Rt.		184'

*The 200' Service to Lot 13, Block B can be moved south to avoid damaging to the existing tree. The Contractor shall coordinate with the Engineer and use fittings as necessary to adjust the service line. No additional compensation will be allowed for moving the service.



BAUGHMAN COMPANY
 315 Ellis St. Wichita, KS 67211 316-262-7271
 baughmanco.com

CAPITAL IMPROVEMENT PROJECT
SANITARY SEWER LINE 1
 Sta. 0+00.00 - Sta. 2+26.57
 TERRACE DRIVE SANITARY SEWER & WATER IMPROVEMENTS

PROJECT NUMBER: 468-85354
 INTERNAL NUMBER: 18-07-E050
 DESIGN: TPV
 DRAWN: TPV
 DATE: Feb. 2019
 SHEET: 3 OF 15