

WEST RIVER BOULEVARD SANITARY SEWER REPLACEMENT

to serve

LOTS 1 - 5 FLATIRON ADDITION

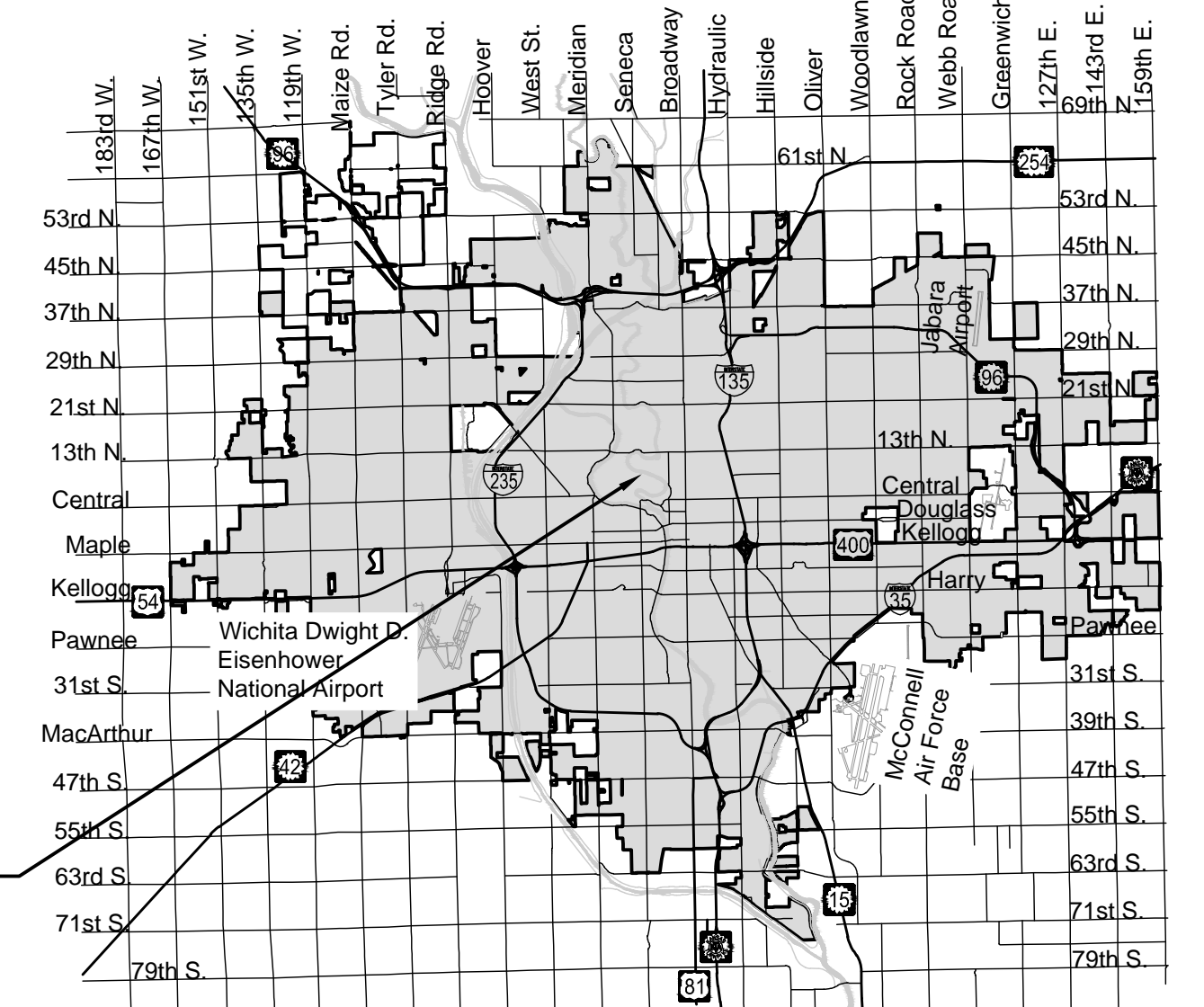
CITY OF WICHITA, KANSAS

Gary Janzen, P.E. City Engineer

Project Number 468-85391

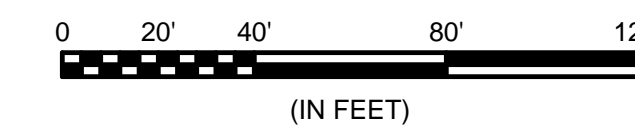
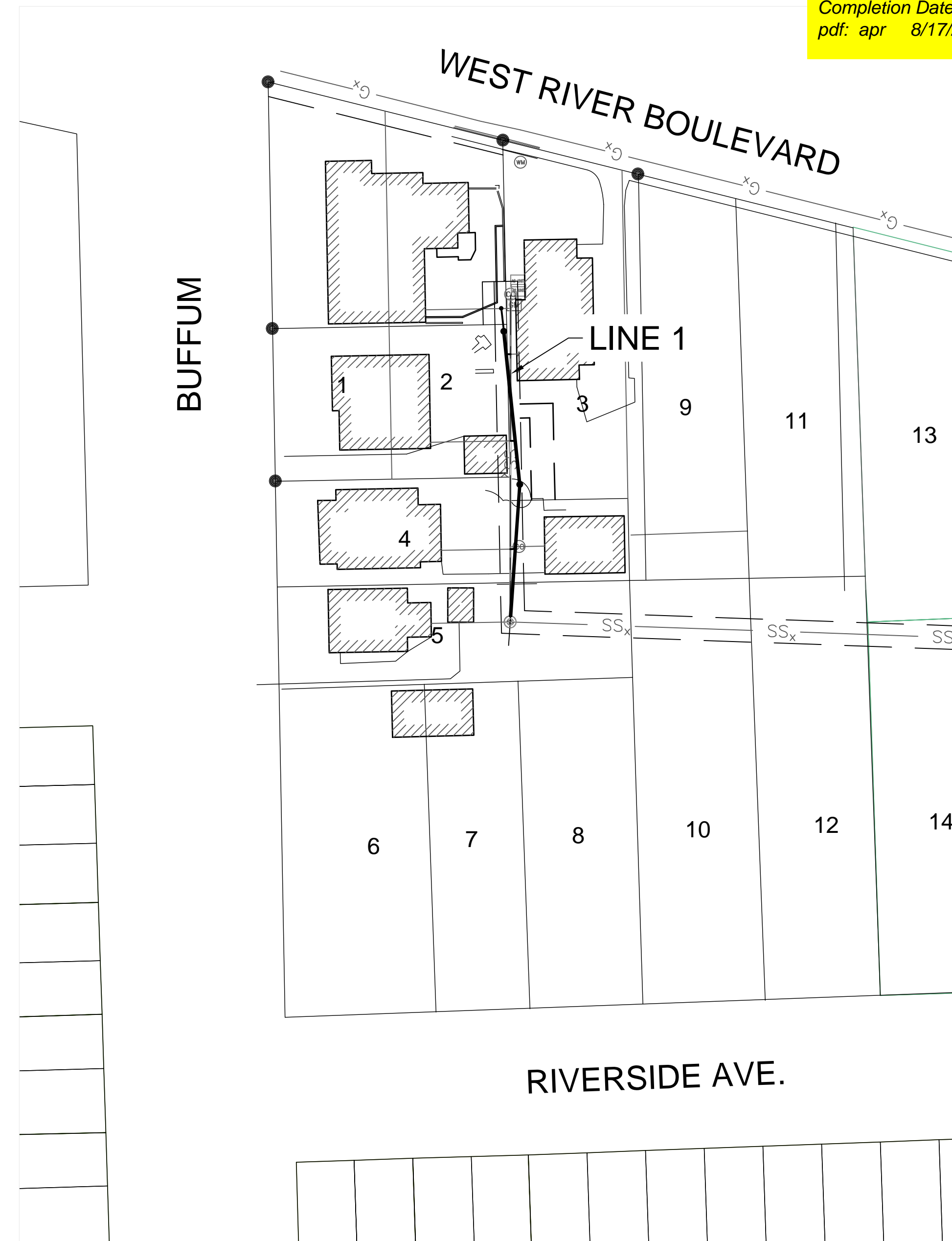
O.C.A. NO. 628128

Dutton Construction - Contractor
J. Terhune - City of Wichita, Field Project Engineer
T. Jaso - City of Wichita, Inspector
As-built
Final Acceptance Date: 4/29/2020
Completion Date:
pdf: apr 8/17/2020



PROJECT
LOCATION

Vicinity Map



Benchmarks

BENCHMARK #1:
CHISELED 'X' IN SIDEWALK AT THE NORTH END OF THE COMMON LOT LINE BETWEEN LOTS 2 & 3, FLATIRON ADDITION, APPROXIMATELY 97' EAST OF THE SOUTHEAST CURB RETURN OF BUFFUM AND WEST RIVER BOULEVARD.
ELEVATION = 1304.68 (NAVD88)

BENCHMARK #2:
CHISELED 'X' IN SIDEWALK AT THE NORTH END OF THE COMMON LOT LINE BETWEEN LOTS 3 & 9, FLATIRON ADDITION, APPROXIMATELY 158' EAST OF THE NORTHEAST CURB RETURN OF BUFFUM AND WEST RIVER BOULEVARD.
ELEVATION = 1304.72 (NAVD88)

Sheet List Table	
Sheet Number	Sheet Title
1	Titlesheet
2	Line 1 Plan-Profile
3	Pre-Cast Sanitary Sewer Manhole
4	Manhole Frame & Cover
5	Plat

Erosion Control Details available on the City of Wichita's website



April 2019

PLANS PREPARED BY



GARVER
8535 E. 21st Street N.
Suite 130
Wichita, KS 67206
(316) 264-8008
www.GarverUSA.com
Project No. 18267618

GENERAL NOTES:

- The Contractor shall comply with all applicable safety regulations. All construction shall be completed following current City Standard Specifications and Special Provisions.
- Contractor will be required to provide notice to utility companies a minimum of seventy-two (72) hours prior to any excavation, as follows:

Kansas One-Call 687-2470

The Contractor must notify the following in case of an emergency:

AT&T	1-800-246-8464
Butler Rural Electric Cooperative	1-316-321-9600
Black Hills Energy	1-800-694-8989
City of Wichita Water & Sewer Dept.	1-316-219-8921
City of Wichita Stormwater	1-316-268-4090
City of Wichita Traffic	1-316-268-4034
Cox Communications	1-888-249-3530
Kansas Gas Service	1-888-482-4950
Phillips 66 Pipeline	1-800-231-2566
Southern Star Central Gas Pipeline	1-800-324-9696
Westar Energy	1-800-544-4857

- Utility service lines, poles, etc. are to be adjusted as necessary by others prior to construction unless the plans specifically call for their adjustment by the Contractor or unless the plans specifically identify a utility to be adjusted by its owner during construction. Existing utilities and their location, as shown on the plans, represent the best information obtainable for design. The Contractor will be required to work around existing utilities within the right-of-way which do not conflict with proposed construction.
- Rubble from the removal of miscellaneous structures and excess excavation which is to be wasted shall be disposed of on sites to be provided by the Contractor. These sites shall be approved by the Engineer as to suitability, appearance and site location. Locations, in the opinion of the Engineer, that will leave an unsightly appearance will not be approved. All disposal sites must be approved by the Kansas Department of Health and Environment. Material either stockpiled or disposed of in a flood plain will require a Kansas State Board of Agriculture permit. Any material dumped in waters of the United States or wetlands is subject to U.S. Corps. of Engineers permitting regulations. Any material buried or stockpiled beyond approved construction limits will require additional archaeological investigations unless buried in a previously approved borrow location.
- Trees and shrubs in public right-of-way which are in direct conflict with proposed new construction shall be removed by the Contractor with the Engineer's approval. Trees and shrubs which are not in direct conflict with proposed new construction shall be saved and protected from damage.
- The Contractor shall give all property owners and/or tenants of developed property abutting the construction of this project a minimum of ten (10) days notice prior to start of construction.
- The Contractor shall be responsible for preserving property irons. The Contractor will be required to re-establish any property irons which are damaged or destroyed by his construction operations. Such irons shall be re-established by a licensed land surveyor in accordance with state laws.
- If traffic will be impacted by construction, a traffic control plan must be submitted and approved by the City Traffic Engineer, Brian Coon at traffic@wichita.gov before construction can begin. The Contractor shall be responsible for all traffic control measures to facilitate construction. All construction zone markings and signage shall conform to the latest version of the Manual on Uniform Traffic Control Devices (MUTCD) as published by the US Dept. of Transportation, Federal Highway Administration. All costs associated with construction markings and signage shall be the Contractors responsibly.

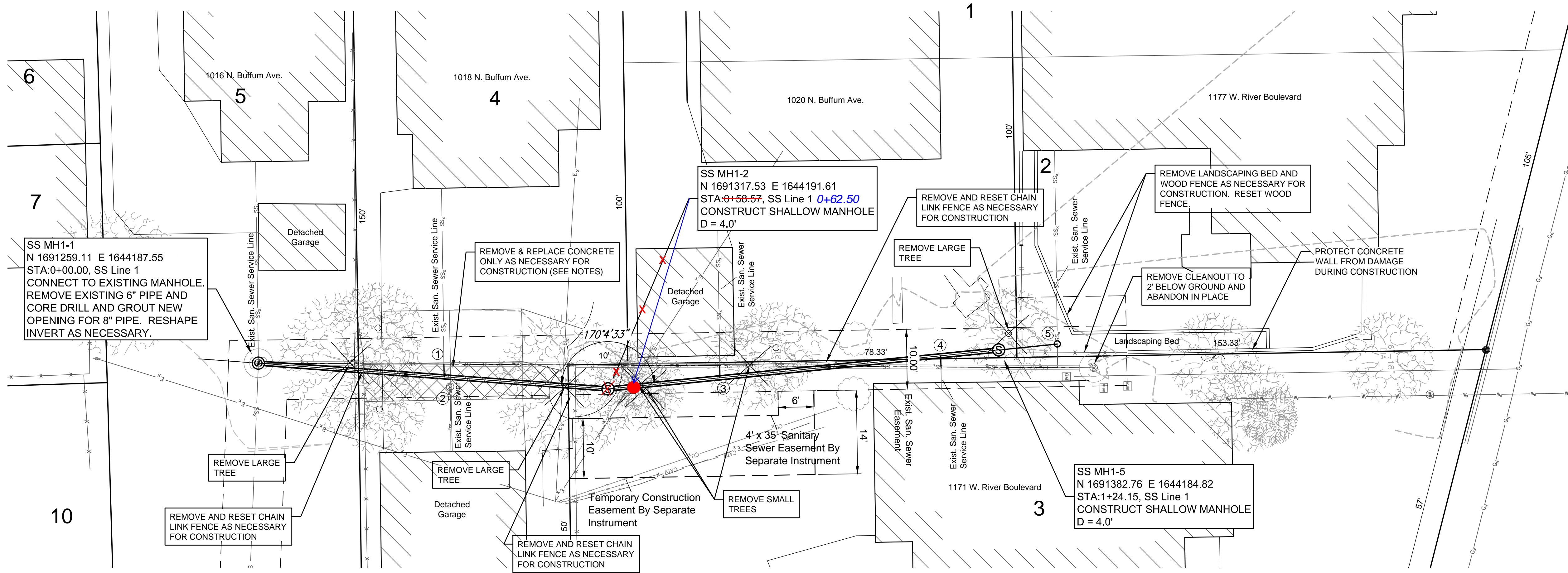
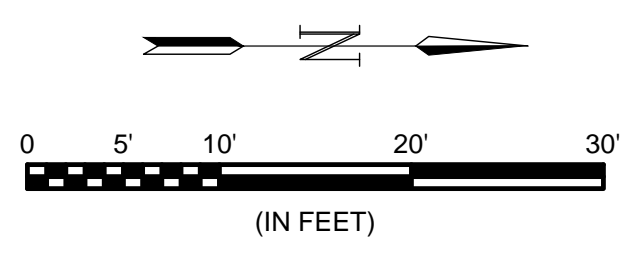
- All elevations shown are NAVD 88.
- All areas disturbed during construction that will not be under proposed pavement shall be restored to match existing conditions.
- The Contractor shall protect from damage and support existing utilities through constructions as approved by the utility owner and the Engineer at the contractors expense.
- Contractor shall limit the extent of trench openings overnight and weekends to less than 50 feet.
- All stubs and plugged pipes shall be located with green plastic tape in the same manner as risers.
- Connecting to Existing Manholes:

Prior to laying sewer lines using existing stubs in existing manholes, the Contractor shall expose and verify the elevation, grade and alignment of existing stubs and notify the Engineer of any deviation from the plans. Where connection to an existing manhole that does not have an existing stub or the stub is unusable due to elevation grade or alignment, the Contractor shall bore cut into existing manhole wall to make connection using approved water stop gasket, and reshape the existing manhole invert to provide smooth flow. The cost to connecting to existing manholes is incidental to the project.

- Contractor shall provide positive drainage away from all manhole covers.
- The Contractor shall prevent any construction debris from entering the existing sanitary sewer during construction.
- The Contractor shall be responsible for maintaining continuous flow of sewage through construction. Contractors proposed method for maintaining sewage flow shall be submitted and approved by the Sewer Maintenance Division (316-268-4073) prior to starting and by-passing of sewage flows.
- Any over excavation from manhole and pipe removal shall be backfilled with AB-3 compacted to 90-95% ASTM D698.
- Excess dirt generated from installation of underground utilities is to be removed from the site.



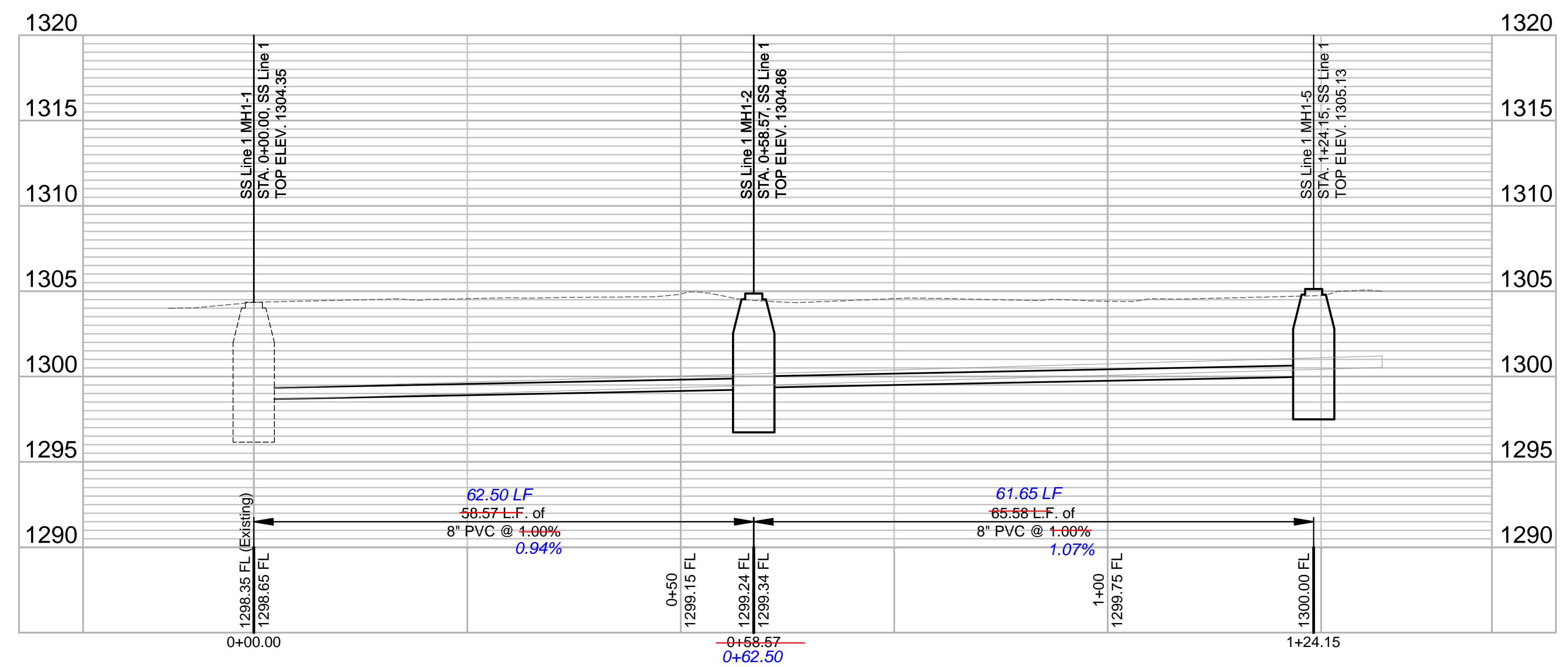
© 2019 GARVER, LLC
 THIS DOCUMENT, ALONG WITH THE IDEAS AND DESIGNS CONVEYED HEREIN, SHALL BE CONSIDERED INSTRUMENTS OF PROFESSIONAL SERVICE AND ARE PROPERTY OF GARVER, LLC. ANY USE, REPRODUCTION, OR DISTRIBUTION OF THIS DOCUMENT, ALONG WITH THE IDEAS AND DESIGN CONTAINED HEREIN, IS PROHIBITED UNLESS AUTHORIZED IN WRITING BY GARVER, LLC OR EXPLICITLY ALLOWED IN THE GOVERNING PROFESSIONAL SERVICES AGREEMENT FOR THIS WORK.



Sanitary Sewer Rehabilitation - Tap Location Table

Service #	Address	MH No. - MH No.	Hor. Dist Main-Tap (Lt/Rt)	Tap Size	Distance from Upstream MH	Distance from Downstream MH
1	1018 N. Buffum	MH 1-1 TO MH 1-2	4' Lt.	4"	31.5'	29'
2	1018 N. Buffum (Garage)	MH 1-1 TO MH 1-2	1' Rt.	4"	29'	32'
3	1020 N. Buffum	MH 1-2 TO MH 1-5	7' Lt.	4"	50'	13'
4	1171 W. River Blvd	MH 1-2 TO MH 1-5	2' Rt.	4"	8.5'	54.5'
5	1177 W. River Blvd	MH 1-2 TO MH 1-5	3' Lt., sch 40 4" to cleanout	4"	MH tap	-

- NOTES:
- EXISTING SERVICE LINE LOCATIONS ARE BASED ON TV LOG REPORTS AND MUST BE VERIFIED AT THE TIME OF CONSTRUCTION. EXISTING SERVICE LINES SHALL BE RECONNECTED TO NEW MAIN.
 - EXISTING MAIN SHALL BE REMOVED AS NECESSARY FOR CONSTRUCTION OF NEW SEWER MAIN. EXISTING MAIN THAT IS NOT REMOVED SHALL BE CUT, CAPPED AND ABANDONED IN PLACE.
 - CONCRETE PAVEMENT TO BE REMOVED SHALL BE CUT TO A NEAT LINE AND/OR REMOVED TO THE NEAREST JOINT. STAMPED/COLORED CONCRETE SHALL BE REPLACED WITH MATCHING CONCRETE. ALL COST OF CONCRETE REMOVAL AND REPLACEMENT SHALL BE PAID FOR BY THE MEASURED QUANTITY, "CONCRETE PAVEMENT, REMOVED & REPLACED".
 - LANDSCAPING TIMBERS AND MATERIALS REMOVED FROM 1177 W. RIVER BOULEVARD SHALL BE SALVAGED BACK TO OWNER.
 - CONTRACTOR SHALL GRADE EASEMENT TO PROVIDE POSITIVE DRAINAGE TO THE SOUTH.
 - THE CONTRACTOR IS RESPONSIBLE FOR COORDINATING WITH ADJACENT HOMEOWNERS FOR ACCESS TO EASEMENT DURING CONSTRUCTION.
 - ALL COSTS ASSOCIATED WITH THE ABANDONMENT OF THE EXISTING SANITARY SEWER PIPE AND CLEANOUT SHALL BE SUBSIDIARY TO THE BID ITEM FOR "SITE CLEARING & RESTORATION".
 - TREES TO BE REMOVED SHALL BE PAID FOR AS "TREE REMOVED, LARGE" OR "TREE REMOVED, SMALL". ANY TREE TRIMMING PERFORMED AS PART OF THIS PROJECT WILL BE SUBSIDIARY TO THE BID ITEM FOR "SITE CLEARING & RESTORATION".



REV.	DATE	DESCRIPTION	BY



CITY OF WICHITA
 WICHITA, KANSAS
 WEST RIVER BOULEVARD
 SANITARY SEWER
 REPLACEMENT

Line 1
 Plan-Profile

JOB NO.: 18267618
 DATE: MAR 2019
 DESIGNED BY: KWL
 DRAWN BY: KWL

BAR IS ONE INCH ON ORIGINAL DRAWING
 0 1" IF NOT ONE INCH ON THIS SHEET, ADJUST SCALES ACCORDINGLY.

DRAWING NUMBER

File: L:\2018\18267618 - West River Blvd SSS Drawings\C3D\Line 1 Plan-Profile.dwg Last Save: 4/11/2019 4:05 PM Last saved by: KWL
 Last plotted by: Lee, Ken W. Plot Style: --- Plot Scale: 1:2.8849 Plot Date: 4/11/2019 4:13 PM Plotter used: None