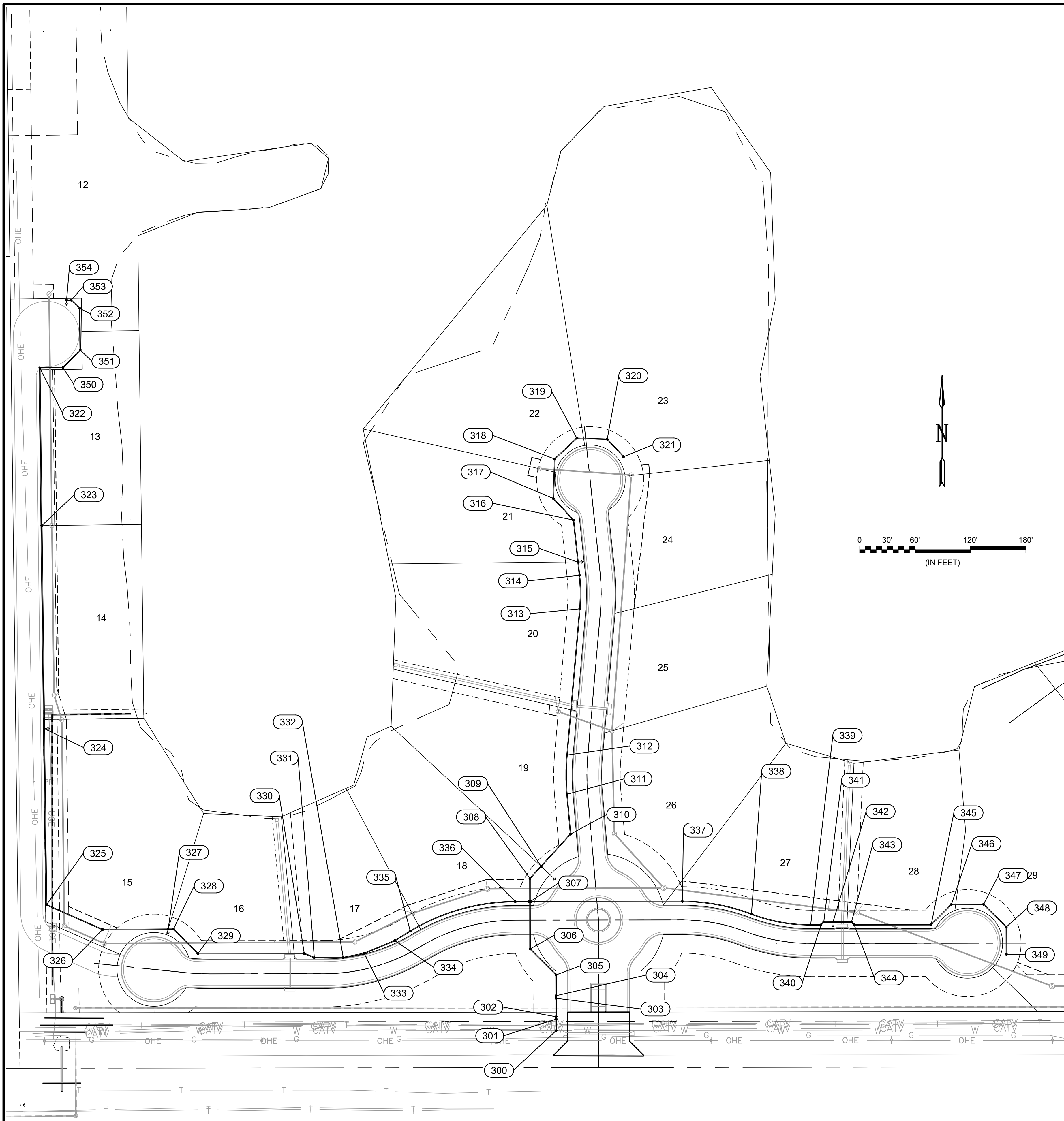


File: L:\2019\19141016 - Emerald Bay 4th PH 2\Drawings\C3D\BUBBLE MAPS.dwg Last Save: 9/17/2020 3:04 PM Last saved by: DRStandrich  
 Last plotted by: Standrich, Darryl R. Plot Style: 1:2:5849 Plot Date: 10/6/2020 8:11 AM Plotter used: None



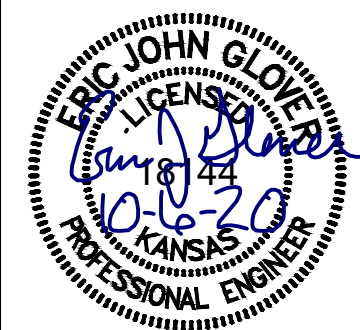
| Point Table |            |            |                |
|-------------|------------|------------|----------------|
| Point #     | Northing   | Easting    | Description    |
| 300         | 1699203.54 | 1630254.64 | TAP EXIST      |
| 301         | 1699216.04 | 1630254.62 | BEND 45° VERT  |
| 302         | 1699218.56 | 1630254.62 | BEND 45° VERT  |
| 303         | 1699238.56 | 1630254.59 | BEND 45° VERT  |
| 304         | 1699241.39 | 1630254.59 | BEND 45° VERT  |
| 305         | 1699263.95 | 1630254.56 | BEND 45° HORIZ |
| 306         | 1699292.08 | 1630226.36 | BEND 45° HORIZ |
| 307         | 1699343.30 | 1630226.29 | 8" CROSS       |
| 308         | 1699368.46 | 1630226.26 | BEND 45° HORIZ |
| 309         | 1699381.64 | 1630238.30 | FH             |
| 310         | 1699416.54 | 1630270.20 | BEND 45° HORIZ |
| 311         | 1699459.69 | 1630266.35 | PC             |
| 312         | 1699502.15 | 1630266.40 | PT             |
| 313         | 1699660.70 | 1630280.26 | PC             |
| 314         | 1699696.95 | 1630279.90 | PT             |
| 315         | 1699711.21 | 1630278.37 | FH             |
| 316         | 1699756.92 | 1630273.47 | BEND 37°       |
| 317         | 1699780.28 | 1630251.60 | BEND 45° HORIZ |
| 318         | 1699823.15 | 1630253.02 | BEND 45° HORIZ |
| 319         | 1699845.64 | 1630277.05 | BEND 45° HORIZ |
| 320         | 1699844.55 | 1630309.94 | BEND 45° HORIZ |
| 321         | 1699825.62 | 1630327.65 | BLOWOFF        |
| 322         | 1699921.82 | 1629695.16 | BEND 90°       |
| 323         | 1699750.83 | 1629697.29 | PVI            |
| 324         | 1699530.84 | 1629700.03 | FH             |
| 325         | 1699339.88 | 1629702.41 | BEND 65°       |
| 326         | 1699313.06 | 1629763.18 | BEND 22.5°     |
| 327         | 1699313.48 | 1629834.22 | FH             |
| 328         | 1699313.51 | 1629839.94 | BEND 45°       |
| 329         | 1699287.04 | 1629866.43 | BEND 45°       |

| Point Table |            |            |                |
|-------------|------------|------------|----------------|
| Point #     | Northing   | Easting    | Description    |
| 330         | 1699287.19 | 1629981.71 | BEND 22.5°     |
| 331         | 1699282.70 | 1629992.58 | BEND 22.5°     |
| 332         | 1699282.74 | 1630023.94 | BEND 11.25°    |
| 333         | 1699287.27 | 1630046.56 | BEND 11.25°    |
| 334         | 1699301.11 | 1630079.86 | BEND 11.25°    |
| 335         | 1699311.35 | 1630096.58 | PC             |
| 336         | 1699343.28 | 1630210.46 | PT             |
| 337         | 1699343.52 | 1630391.39 | PC             |
| 338         | 1699329.83 | 1630466.22 | PRC            |
| 339         | 1699318.10 | 1630530.36 | PT             |
| 340         | 1699318.12 | 1630541.56 | BEND 45° HORIZ |
| 341         | 1699321.12 | 1630544.55 | BEND 45° HORIZ |
| 342         | 1699321.14 | 1630554.55 | FH             |
| 343         | 1699321.16 | 1630574.57 | BEND 45° HORIZ |
| 344         | 1699318.16 | 1630577.58 | BEND 45° HORIZ |
| 345         | 1699318.27 | 1630660.99 | BEND 45° HORIZ |
| 346         | 1699340.28 | 1630682.88 | BEND 45° HORIZ |
| 347         | 1699340.37 | 1630717.68 | BEND 45° HORIZ |
| 348         | 1699315.83 | 1630742.34 | BEND 45° HORIZ |
| 349         | 1699286.38 | 1630742.42 | BLOWOFF        |
| 350         | 1699922.13 | 1629720.33 | BEND 45°       |
| 351         | 1699941.19 | 1629738.93 | BEND 45°       |
| 352         | 1699986.27 | 1629738.36 | BEND 45°       |
| 353         | 1699995.25 | 1629729.16 | BEND 45°       |
| 354         | 1699995.18 | 1629724.16 | FH             |



© 2020 GARVER, LLC  
 THIS DOCUMENT, ALONG WITH THE IDEAS AND DESIGNS CONVEYED HEREIN, SHALL BE CONSIDERED INSTRUMENTS OF PROFESSIONAL SERVICE AND ARE PROPERTY OF GARVER, LLC. ANY USE, REPRODUCTION, OR DISTRIBUTION OF THIS DOCUMENT, ALONG WITH THE IDEAS AND DESIGN CONTAINED HEREIN, IS PROHIBITED UNLESS AUTHORIZED IN WRITING BY GARVER, LLC OR EXPLICITLY ALLOWED IN THE GOVERNING PROFESSIONAL SERVICES AGREEMENT FOR THIS WORK.

8535 E. 21st St. N.  
 Suite 130  
 Wichita, KS 67206  
 (316) 264-8008



| REV. | DATE | DESCRIPTION | BY |
|------|------|-------------|----|
|      |      |             |    |
|      |      |             |    |
|      |      |             |    |
|      |      |             |    |



CITY OF WICHITA  
 WICHITA, KANSAS  
 EMERALD BAY 4th ADD.  
 PHASE 2 - WATER

WATER BUBBLE MAP

JOB NO.: 19T41016  
 DATE: OCT. 2020  
 DESIGNED BY: .  
 DRAWN BY: .

BAR IS ONE INCH ON ORIGINAL DRAWING  
 IF NOT ONE INCH ON THIS SHEET, ADJUST SCALES ACCORDINGLY.

DRAWING NUMBER