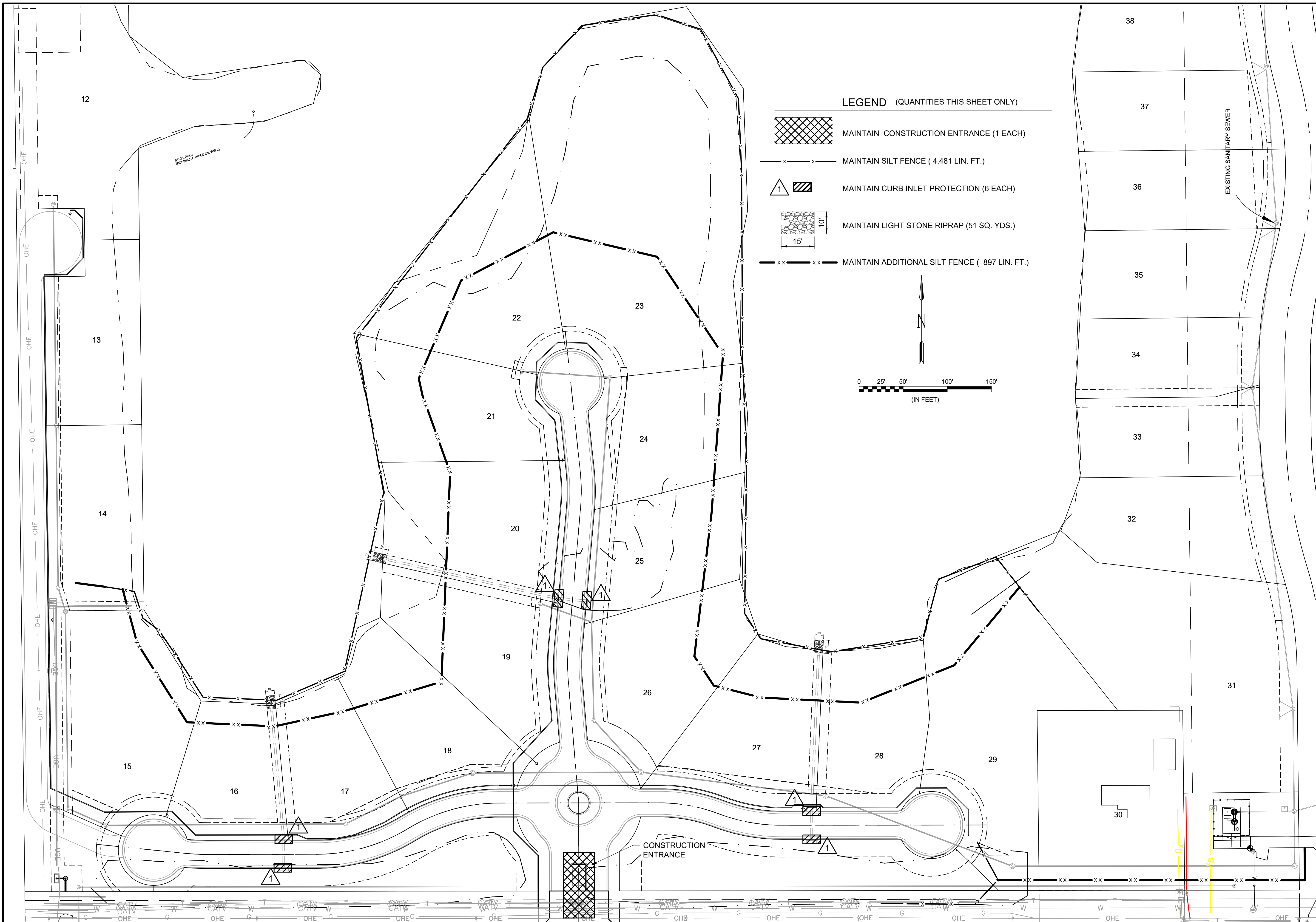



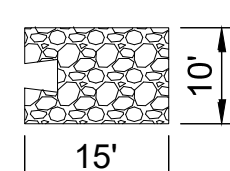

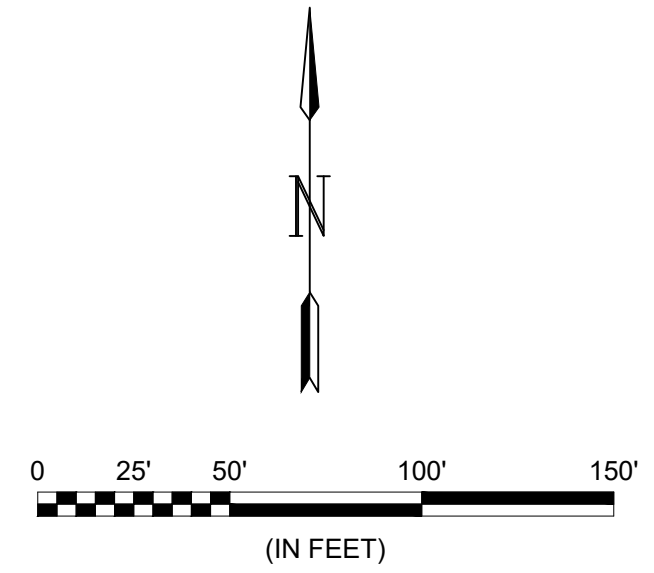


File: L:\2019\19141016 - Emerald Bay 4th PH 2\Drawings\C3D\Storm Sewer\EROSION CONTROL PLAN SOUTH-SS.dwg Last Save: 9/18/2020 9:42 AM Last saved by: DRStandrich
 Last plotted by: Standrich, Darryl R. Plot Style: 1:2.5849 Plot Date: 10/6/2020 8:12 AM Plotter used: None

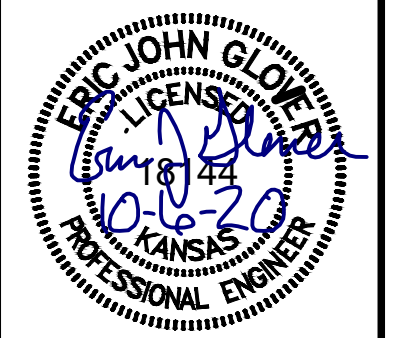


- LEGEND (QUANTITIES THIS SHEET ONLY)**
-  MAINTAIN CONSTRUCTION ENTRANCE (1 EACH)
 -  MAINTAIN SILT FENCE (4,481 LIN. FT.)
 -  MAINTAIN CURB INLET PROTECTION (6 EACH)
 -  MAINTAIN LIGHT STONE RIPRAP (51 SQ. YDS.)
 -  MAINTAIN ADDITIONAL SILT FENCE (897 LIN. FT.)



© 2020 GARVER, LLC
 THIS DOCUMENT, ALONG WITH THE IDEAS AND DESIGNS CONVEYED HEREIN, SHALL BE CONSIDERED INSTRUMENTS OF PROFESSIONAL SERVICE AND ARE PROPERTY OF GARVER, LLC. ANY USE, REPRODUCTION, OR DISTRIBUTION OF THIS DOCUMENT, ALONG WITH THE IDEAS AND DESIGN CONTAINED HEREIN, IS PROHIBITED UNLESS AUTHORIZED IN WRITING BY GARVER, LLC OR EXPLICITLY ALLOWED IN THE GOVERNING PROFESSIONAL SERVICES AGREEMENT FOR THIS WORK.

8535 E. 21st St. N.
 Suite 130
 Wichita, KS 67206
 (316) 264-8008



REV.	DATE	DESCRIPTION	BY



CITY OF WICHITA
 WICHITA, KANSAS
 EMERALD BAY 4th ADD.
 PHASE 2 - WATER

EROSION CONTROL PLAN

JOB NO.: 19T41016
 DATE: OCT. 2020
 DESIGNED BY: .
 DRAWN BY: .

BAR IS ONE INCH ON ORIGINAL DRAWING
 IF NOT ONE INCH ON THIS SHEET, ADJUST SCALES ACCORDINGLY.

DRAWING NUMBER