

GENERAL NOTES:

1. Contractor will be required to provide notice to utility companies a minimum of seventy-two (72) hours prior to any excavation, as follows:

Kansas One-Call	687-2470
The Contractor must notify the following in case of an emergency:	
Cox Communications	262-4270
Kansas Gas Service	1-888-482-4950
Westar Energy	383-8650
Aquila Energy	1-800-303-0357
AT&T	268-2245
City of Wichita Water Dept.	219-8921
City of Wichita Sewer Maint.	268-4024
City of Wichita Storm Sewer Maint.	268-4090
City of Wichita Traffic Maint.	268-4034
Conoco Phillips Pipeline Co.	1-877-267-2290
Southern Star Pipeline Co.	529-6600
Kinder-Morgan Pipeline Co.	1-888-844-5658

2. Utility service lines, poles, valve boxes, meters, and etcetera are to be adjusted as necessary by others prior to construction unless the plans specifically call for their adjustment by the Contractor or unless the plans specifically identify a utility to be adjusted by its owner during construction. Existing utilities and their location, as shown on the plans, represent the best information obtainable for design. The Contractor will be required to work around existing utilities within the right-of-way which do not conflict with proposed construction.

3. Rubble from the removal of miscellaneous structures and excess excavation which is to be wasted shall be disposed of on sites to be provided by the Contractor. These sites shall be approved by the Engineer as to suitability, appearance and site location. Locations, in the opinion of the Engineer, that will leave an unsightly appearance will not be approved. All disposal sites must be approved by the Kansas Department of Health and Environment. Material either stockpiled or disposed of in a flood plain would require a Kansas State Board of Agriculture permit. Any material dumped in waters of the United States or wetlands is subject to U.S. Corps. of Engineers permitting regulations. Any material buried or stockpiled beyond approved construction limits would require additional archaeological investigations unless buried in a previously approved borrow location.

4. Trees and shrubs in public right-of-way which are in direct conflict with proposed new construction shall be removed by the Contractor with the Engineer's approval. Trees and shrubs which are not in direct conflict with proposed new construction shall be saved and protected from damage.

5. The Contractor shall give all property owners and/or tenants of developed property abutting the construction of this project a minimum of ten (10) days notice prior to start of construction.

6. The Contractor shall be responsible for preserving property irons. The Contractor will be required to re-establish any property irons which are damaged or destroyed by his construction operations. Such irons shall be re-established by a licensed land surveyor in accordance with state laws.

7. All existing and proposed erosion control measures including silt fencing, erosion control mat, straw bales, inlet barriers, and const. entrance shall be maintained throughout construction by the contractor and until project is accepted by the City of Wichita. The on-site engineer shall complete weekly reports on the status of erosion control measures. The contractor shall be required to comply with maintenance and/or replacement of erosion control measures as determined by the on-site engineer until project is accepted by City of Wichita. Maintenance and/or replacement of erosion control measures to be paid by L.S. bid item "Maintain Existing BMP's."

8. All excess excavation shall remain on-site and shall be stockpiled or spread at a location determined by the Engineer.

9. All of Res. "A", Res. "B", Res. "C", Res. "D", 45th St. N. & Hoover Rd. disturbed by construction shall be seeded and mulched as follows:
SEED -- Kansas Premium Fescue Blend; 8#/1000 Sq. Ft.
Rye grass (PLS); 3#/1000 Sq. Ft. and
FERTILIZER -- 12-24-12 Ratio at 350 Lbs./Ac.
MULCH -- 2 Tons Prairie Hay / Acre - where E.C. Mat not specified.

All other disturbed areas not in street R/W are to be seeded as follows:
SEED -- Rye grass (PLS)--5#/1000 Sq. Ft.

All costs associated with seeding including mobilization, preparation of ground, seeding, fertilizing, mulching, etc. shall be included in the L.S. bid item "Seeding".

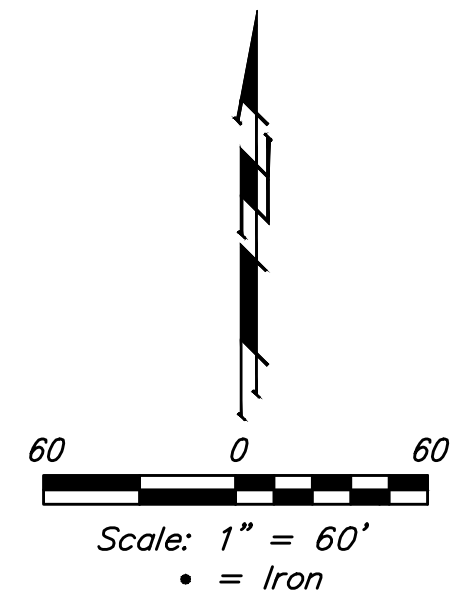
An additional bid item for "Seeding, Temporary" has been included and may be used at the discretion of the Design Engineer. Temporary seed shall be Annual Rye at 5 Lbs./1000 Sq. Ft. unless otherwise noted and shall be planted when permanent seed or sod cannot be used due to seasonal limitations.

10. The Developer for this project is Jay Russell
PO Box 75337
Wichita, KS 67272
(316)990-2105
j@jussellco.com

STORMWATER DRAIN IMPROVEMENTS to serve EDGE WATER 4TH ADDITION

CITY OF WICHITA, KANSAS

Gary Janzen, P.E. City Engineer
Project Number: 468-2020-085441
OCA Number: 810090



SHEET INDEX

Title Sheet	1
Line 1	2
Line 2 & 3	3
Mass Grading / Erosion Control	4
Erosion Control BMP Details	5-9
Mass Grading Typical Section	10
Std. Type 1A Curb Inlet Detail	11
Frame and Cover Details	12
Standard Manhole Detail	13
Coordinate Sheet	14
Copy of Plat	15

Stormwater Certification:

New Development or Redevelopment

Stormwater Permit # SW2020-0040

NOI Permit # S-AR94-1641, KSR115724

These construction plans were prepared in accordance with the current Stormwater management Regulations as set forth in the City of Wichita's Stormwater Management Ordinance 16.32 and the policies/guidelines presented in the Wichita/Sedgwick County Stormwater Manual.

Site Area (Acres) = 3.7 ac.

Disturbed Area (Acres) = 3.7 ac.

Water Quality Treatment: Existing Snouts

Downstream Channel Protection: Existing Wet Ponds

Detention: Existing Wet Ponds

The BMP used for this development is Existing Snouts

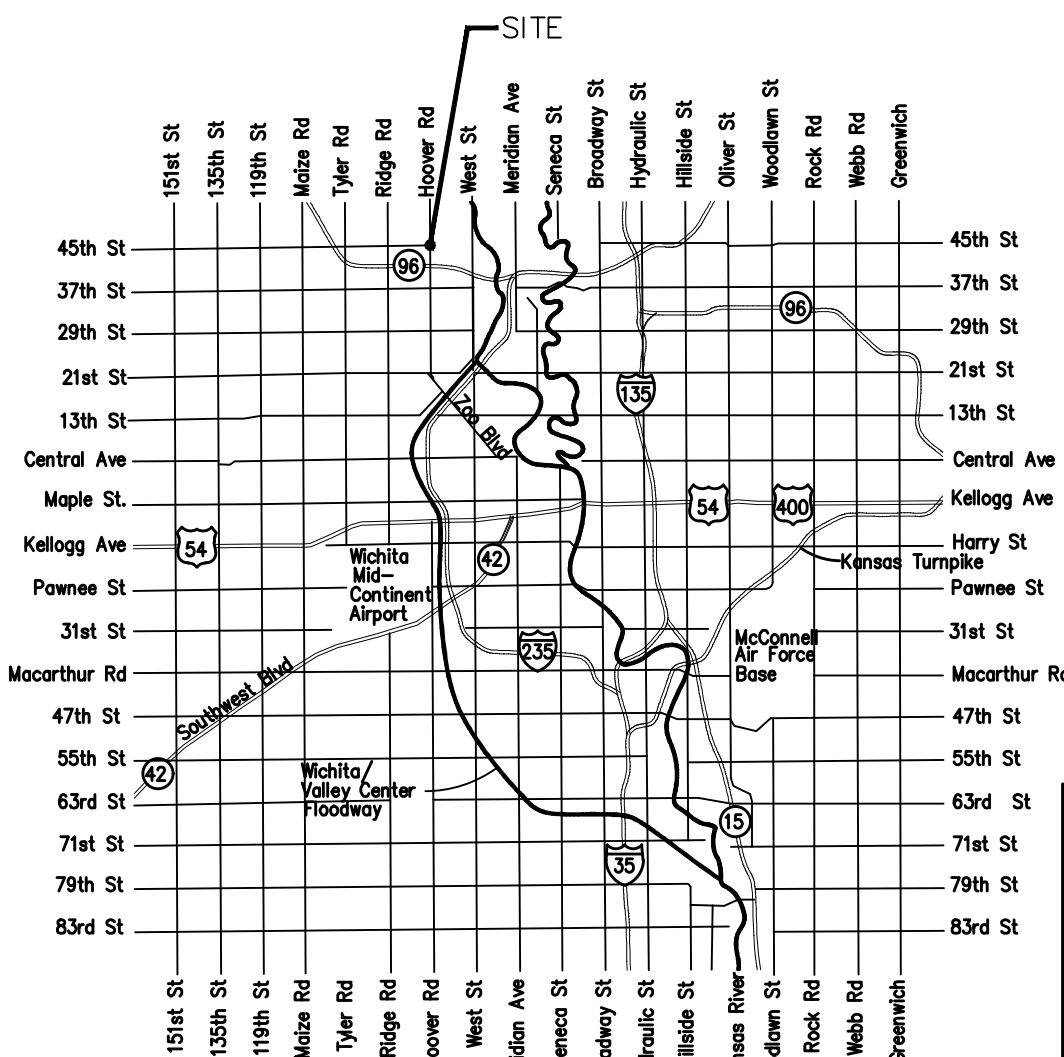
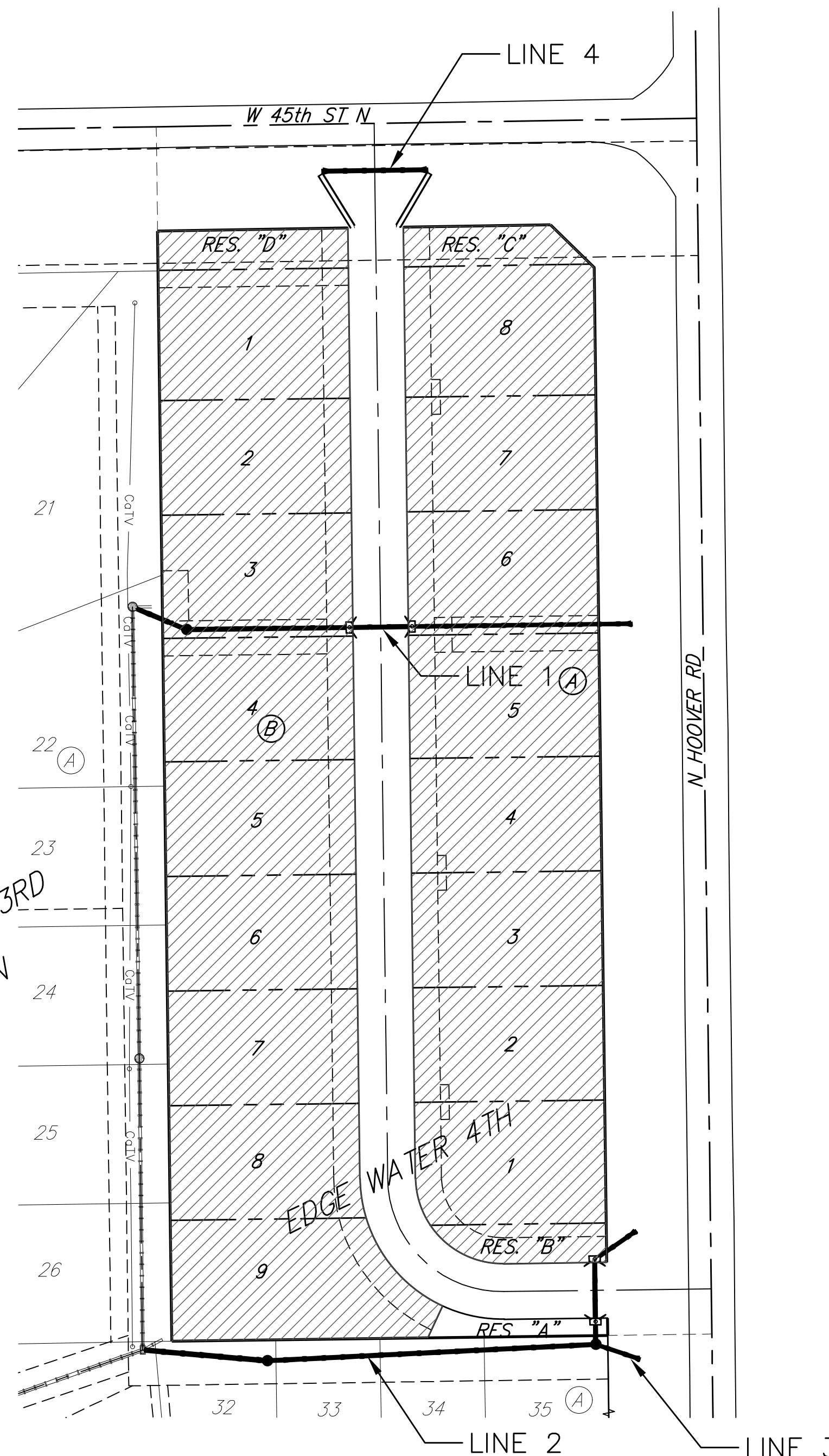
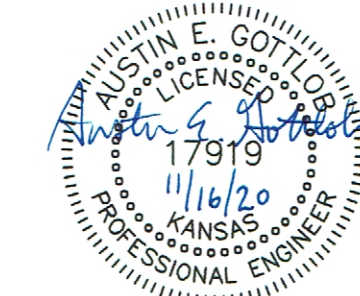
APPROVED AS NOTED
BY WICHITA PUBLIC WORKS ENGINEERING
AND STORMWATER DIVISION

Stormwater Approved by Mark Hall 09/18/20

NOTE TO CONTRACTORS

Inspection and testing for this project is to be provided by a Licensed Consulting Engineering Firm under contract with the Owner/Developer. Said Inspection to be in accordance with the City of Wichita standard construction engineering practices and certified by a Licensed Professional Engineer in the state of Kansas. No work shall be performed the Contractor without such inspection nor shall any work be commenced without written authorization by the City Engineer. All Construction and Materials shall comply with the current City of Wichita Specifications and Standards and Special Provisions. (on file and available at Wichita.gov).

An approved copy of these plans signed by City staff are required on-site.



BENCHMARKS

disk adjacent to fire hydrant in SW corner of Lot 22 BLK A, Edgewater 3rd Addition
Elev. = 1337.95 NGVD29

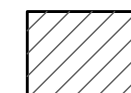
rail road spike in N face of power pole
E of Lot 3 BLK A, Edgewater 4th Addition
Elev. = 1336.93 NGVD29

EARTH WORK TOTALS (Unadjusted)

	C.Y. EXCAVATION	C.Y. FILL
Project Totals	2,703	2,748

Earthwork Quantities reflect the best available topography. The Contractor shall satisfy himself with the earthwork quantities as bid for L.S. bid item "Grading, Mass" prior to bidding. No additional payments or change orders for earthwork will be accepted.

BENEFIT DISTRICT



Baughman Company, P.A. 315 Ellis St. Wichita, KS 67211 P 316-262-7271 F 316-262-0148
ENGINEERING | SURVEYING | PLANNING | LANDSCAPE ARCHITECTURE

Vicinity Map