

BENCHMARKS:
 disk adjacent to fire hydrant in SW corner of Lot 22 BLK A, Edgewater 3rd Addition
 Elev. = 1337.95 NGVD29

rail road spike in N face of power pole
 E of Lot 3 BLK A, Edgewater 4th Addition
 Elev. = 1336.93 NGVD29

Existing trees which are in direct conflict with proposed new construction shall be removed by the Contractor **ONLY** with approval of the Developer or Engineer. Trees not in direct conflict with proposed new construction shall remain and be protected from damage. Cost shall be included in bid item "Site Clearing"

Sta. 0+00.0, Begin Line 2
 Remove Existing 18" RCP Stub & Extend 18" RCP Southeast Contractor to Verify Depth & Location of Existing Drop Inlet Prior to Construction.
 Top Elev. = 1332.47

Sta. 0+72.0, Line 2
 Const. Std Manhole
 Top Elev. = 1334.35

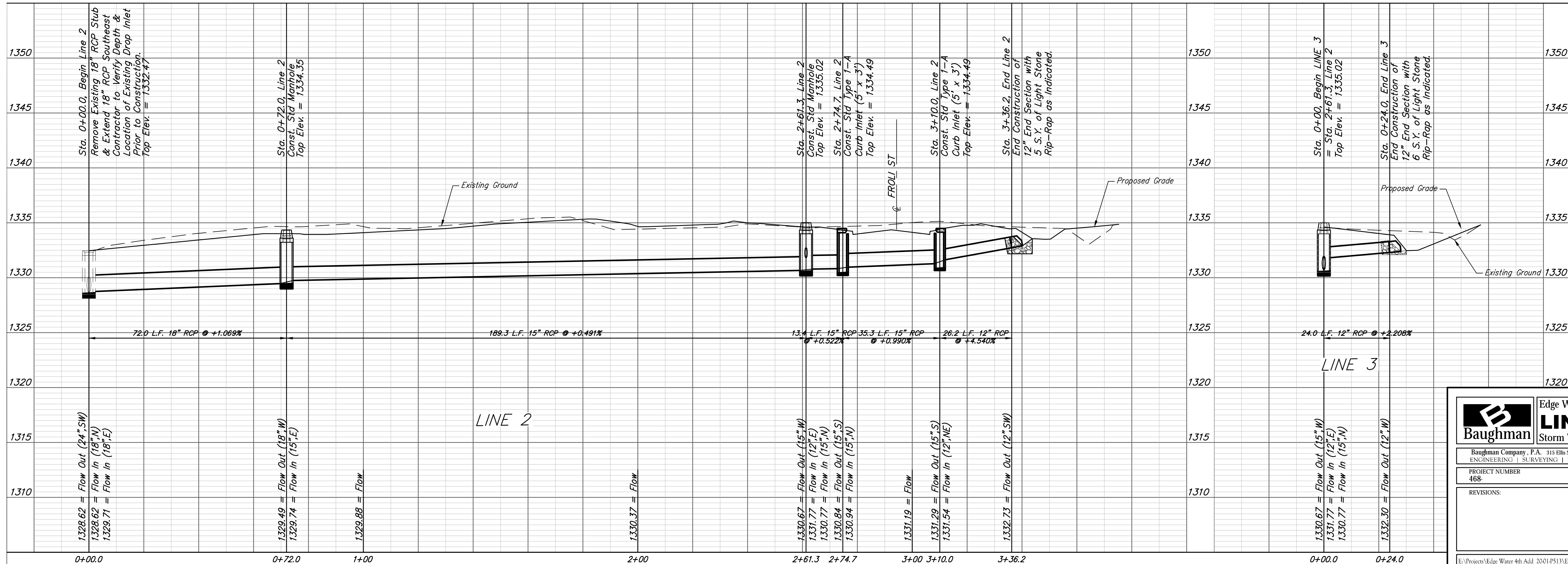
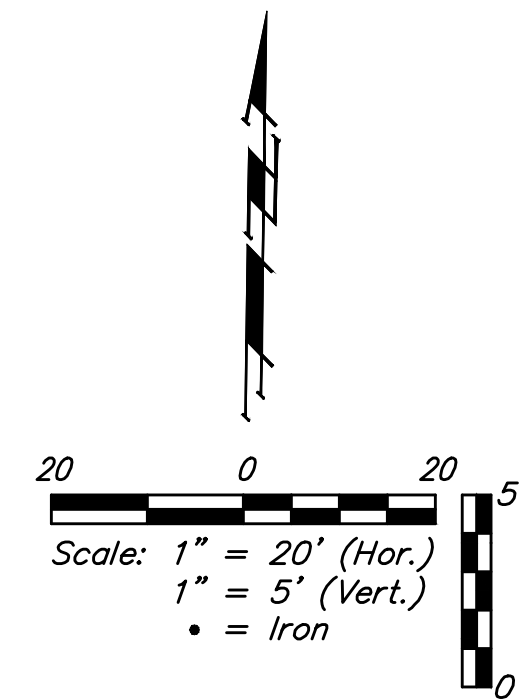
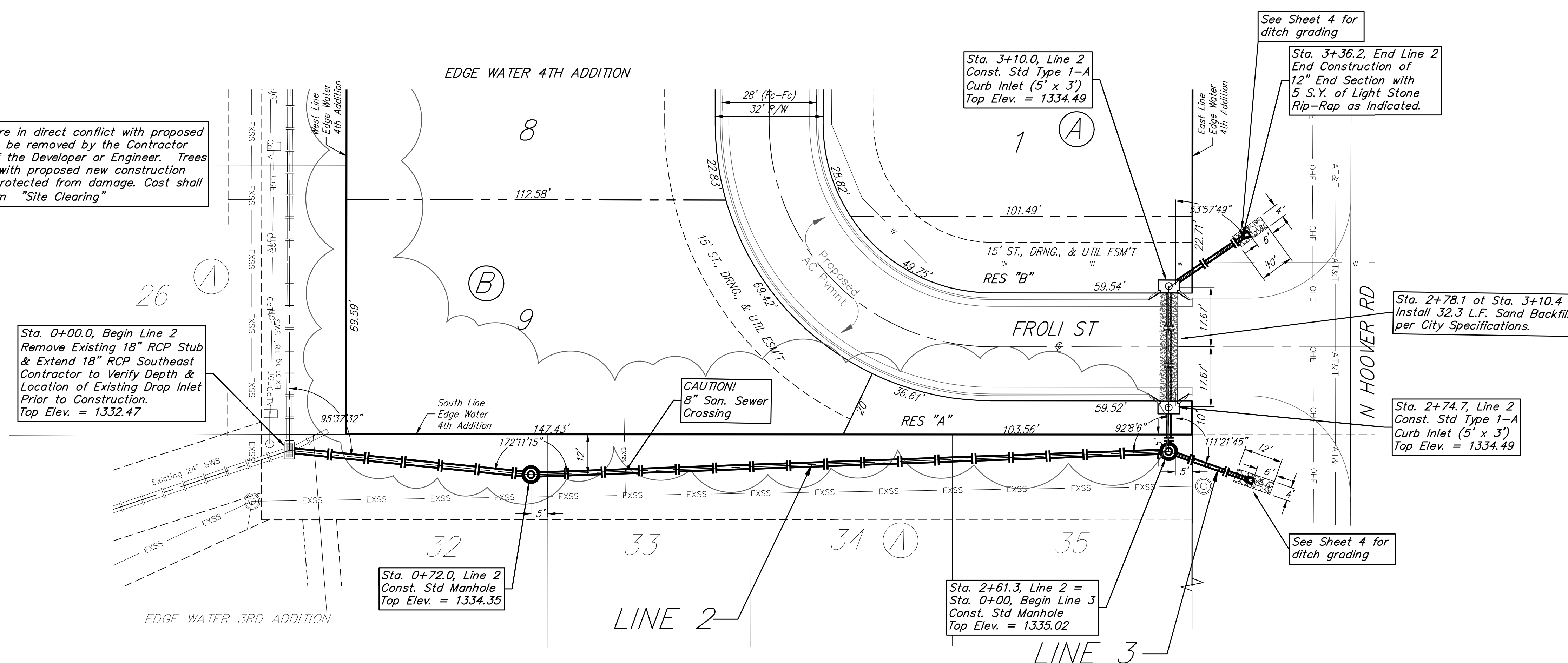
Sta. 2+61.3, Line 2 =
 Sta. 0+00, Begin Line 3
 Const. Std Manhole
 Top Elev. = 1335.02

Sta. 3+10.0, Line 2
 Const. Std Type 1-A
 Curb Inlet (5' x 3')
 Top Elev. = 1334.49

Sta. 3+36.2, End Line 2
 End Construction of
 12" End Section with
 5 S.Y. of Light Stone
 Rip-Rap as Indicated.

Sta. 2+78.1 of Sta. 3+10.4
 Install 32.3 L.F. Sand Backfill
 per City Specifications.

Sta. 2+74.7, Line 2
 Const. Std Type 1-A
 Curb Inlet (5' x 3')
 Top Elev. = 1334.49



| | | | |
|--------------------------------|---------------|---|------------------|
| | | Edge Water 4th Addition | |
| | | LINE 2 & 3 | |
| Storm Water Sewer Improvements | | Baughman Company, P.A. 315 Ellis St. Wichita, KS 67211 P 316.262.7271 F 316.262.0149 ENGINEERING SURVEYING PLANNING LANDSCAPE ARCHITECTURE | |
| PROJECT NUMBER 468 | DESIGN AEC | DRAWN CDW | DATE 11/16/20 |
| REVISIONS: | APPROVED | SCALE Noted | SHEET |
| | | 3 OF 15 | |