

BENCHMARKS:
 BM #1: Crows foot cut at SE corner of curb inlet south side of Kollmeyer near NE corner of Lot 82, Block A, Edge Water Addition.
 Elev. = 1335.36 NGVD29

BM #2: Square Cut Cross in center of curb inlet top near the Northwest corner of Lot 31, Blk A., Edge Water 3rd Addition.
 Elev. = 1333.65 NGVD29

BM #3: Brass disc in top of curb adjacent to fire hydrant at the Northwest corner of Driftwood and Driftwood Ct. near the Southeast corner of Lot 62, Blk D., Edge Water Addition.
 Elev. = 1336.19 NGVD29

WATER VALVE LOCATION TABLE

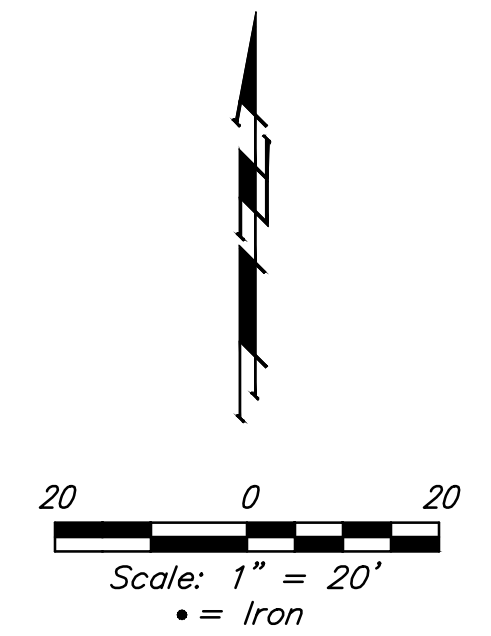
VALVE NUMBER	STREET	BASELINE STATION	OFFSET DISTANCE	OFFSET DIRECTION
V11	Sunny Ct.	5+12.14	23'	Rt.

Paving contractor will be responsible to operate all water valves on the project, in the presence of the inspector, to ensure accessibility to the valves, and that all valves (except blowoffs) are left in the "ON" position when the project is completed.

All streets on this sheet are included in Phase 3.

P.V.I.
 Elev. = 1334.70
 No V.C.

Baseline = CL Sunny Ct.



Curve #7
 Curve Data Based on Centerline
 Rad. = 92.56' Delta = 46°35'40" Tangent = 39.86'
 Arc = 75.27' L.C. = 73.22' Def./Ft. = 18.57092 Min.

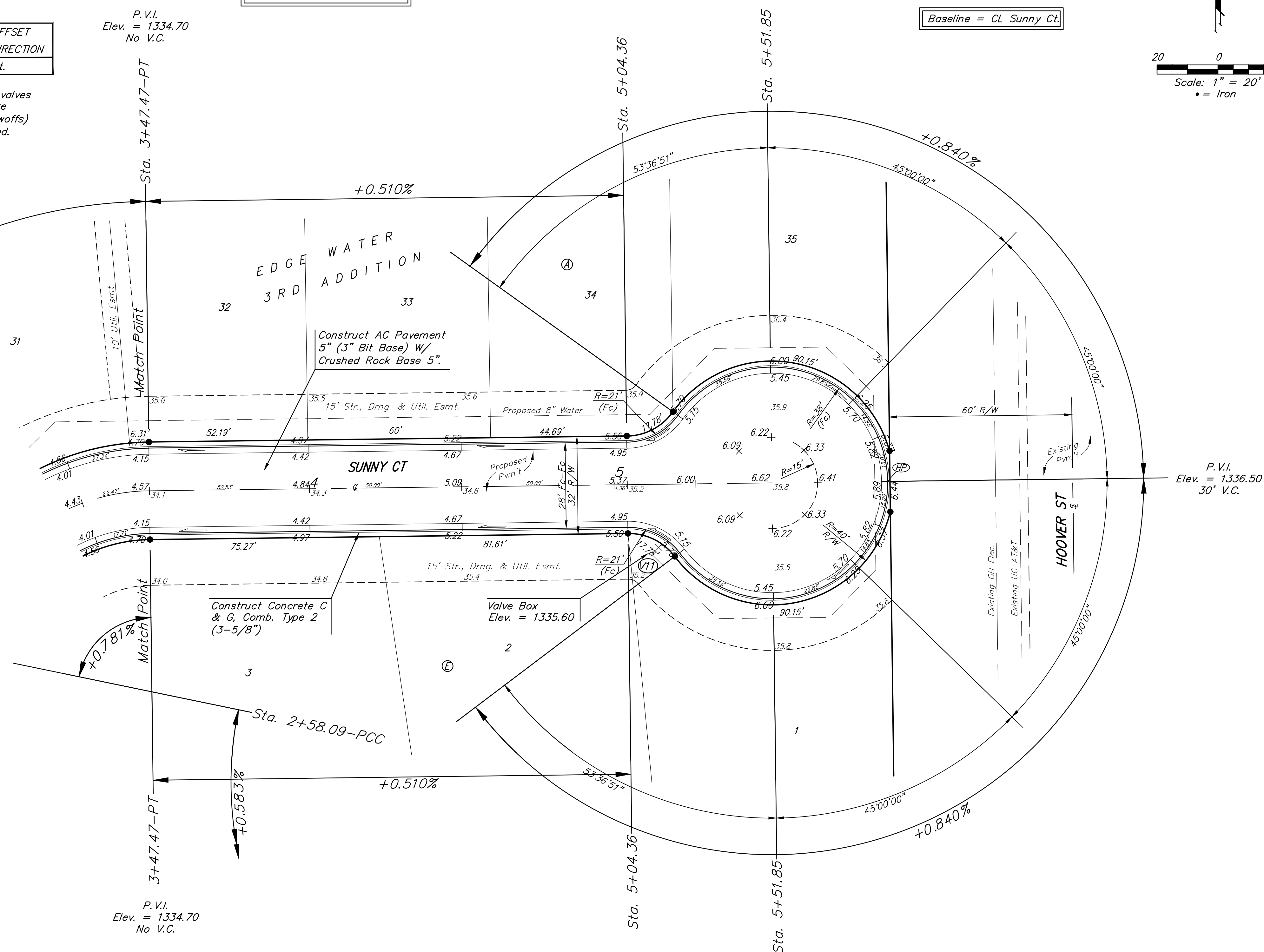
Face Chord Lengths	Station	Arc	8' Left	8' Right	Defl.	Total Defl.
0+29.11	-	-	-	-	0°00'00"	0°00'00"
0+50.00	20.89'	15.89'	25.80'	6°27'57"	6°27'57"	
0+75.00	25.00'	19.00'	30.85'	7°44'16"	14°12'13"	
1+00.00	25.00'	19.00'	30.85'	7°44'17"	21°56'30"	
1+04.38	4.38'	3.34'	5.42'	1°21'20"	23°17'50"	

Curve #8
 Curve Data Based on Centerline
 Rad. = 212' Delta = 27°16'40" Tangent = 51.44'
 Arc = 100.93' L.C. = 99.98' Def./Ft. = 8.10793 Min.

Face Chord Lengths	Station	Arc	8' Left	8' Right	Defl.	Total Defl.
1+57.16	-	-	-	-	0°00'00"	0°00'00"
1+75.00	17.84'	19.69'	15.98'	2°24'39"	2°24'39"	
2+00.00	25.00'	27.58'	22.39'	3°22'42"	5°47'21"	
2+25.00	25.00'	27.58'	22.39'	3°22'42"	9°10'03"	
2+50.00	25.00'	27.58'	22.39'	3°22'41"	12°32'44"	
2+58.09	8.09'	8.93'	7.25'	1°05'36"	13°38'20"	

Curve #9
 Curve Data Based on Centerline
 Rad. = 66' Delta = 77°35'34" Tangent = 53.06'
 Arc = 89.38' L.C. = 82.71' Def./Ft. = 26.04367 Min.

Face Chord Lengths	Station	Arc	8' Left	8' Right	Defl.	Total Defl.
2+58.09	-	-	-	-	0°00'00"	0°00'00"
2+75.00	16.91'	22.49'	11.24'	7°20'24"	7°20'24"	
3+00.00	25.00'	33.13'	16.57'	10°51'05"	18°11'29"	
3+25.00	25.00'	33.13'	16.57'	10°51'06"	29°02'35"	
3+47.47	22.47'	29.82'	14.91'	9°45'12"	38°47'47"	



P.V.I.
 Elev. = 1336.50
 30' V.C.

NOTE: ROLL TYPE CURB & GUTTER (TYPE 2) TO BE CONSTRUCTED ON THE PAVEMENT SHOWN ON THIS SHEET. TOP OF CURB ELEVATIONS ARE GIVEN FOR FULL HEIGHT CURB (TYPE 4).

EDGE WATER 3RD ADD. - PH. 2, 3 & Entrance
SUNNY CT.
 (Lots 27-35, Block A & Lots 1-5, Block E)

Baughman Company, P.A.
 REGISTERED PROFESSIONAL ENGINEERS
 ENGINEERING LICENSE NO. 11522
 ARCHITECTURE LICENSE NO. 11522
 APPROVED: [Signature] DATE: 11/20/20

REVISIONS: [Table with 2 columns: No., Description]

SHEET **10** OF **39**