

BENCHMARKS:
 BM #1: Crows foot cut at SE corner of curb inlet south side of Kollmeyer near NE corner of Lot 82, Block A, Edge Water Addition.
 Elev. = 1335.36 NGVD29

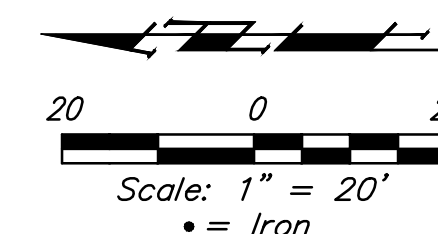
BM #2: Square Cut Cross in center of curb inlet top near the Northwest corner of Lot 31, Blk A., Edge Water 3rd Addition.
 Elev. = 1333.65 NGVD29

BM #3: Brass disc in top of curb adjacent to fire hydrant at the Northwest corner of Driftwood Ct. near the Southeast corner of Lot 62, Blk D., Edge Water Addition.
 Elev. = 1336.19 NGVD29

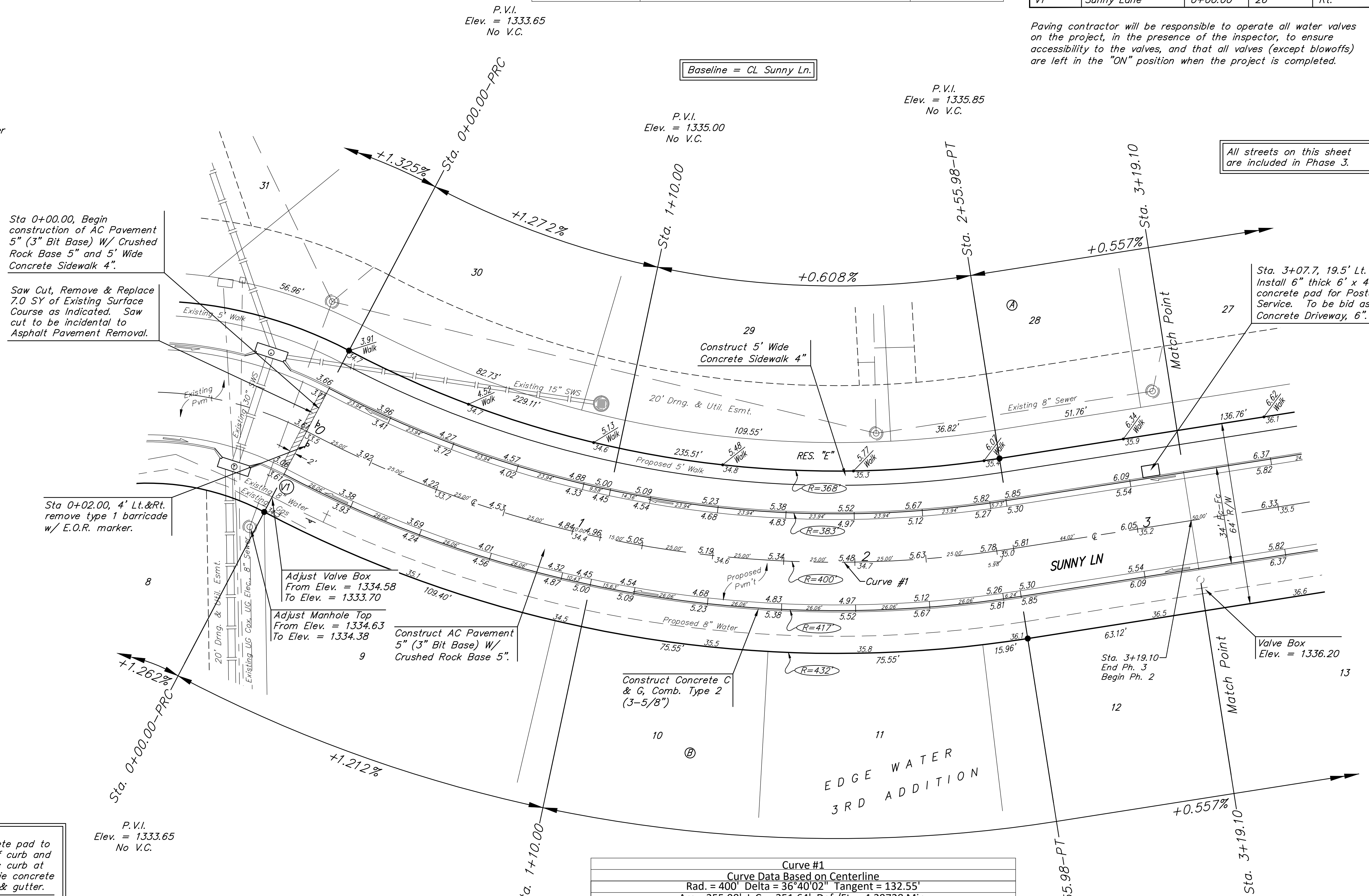
Subdivision Bench Marks		
Street & Station	Location Description	Elevation
Sunny Lane 3+99.10, 17.25' Rt.	Adjacent to Fire Hydrant near common front lot corner of Lots 13 & 14, Block B, Edge Water 3rd Addition.	

WATER VALVE LOCATION TABLE

VALVE NUMBER	STREET	BASELINE STATION	OFFSET DISTANCE	OFFSET DIRECTION
V1	Sunny Lane	0+00.00	26'	Rt.



Paving contractor will be responsible to operate all water valves on the project, in the presence of the inspector, to ensure accessibility to the valves, and that all valves (except blowoffs) are left in the "ON" position when the project is completed.



Sta 0+00.00, Begin construction of AC Pavement 5" (3" Bit Base) W/ Crushed Rock Base 5" and 5' Wide Concrete Sidewalk 4".

Saw Cut, Remove & Replace 7.0 SY of Existing Surface Course as Indicated. Saw cut to be incidental to Asphalt Pavement Removal.

Sta 0+02.00, 4' Lt.&Rt. remove type 1 barricade w/ E.O.R. marker.

Adjust Valve Box From Elev. = 1334.58 To Elev. = 1333.70

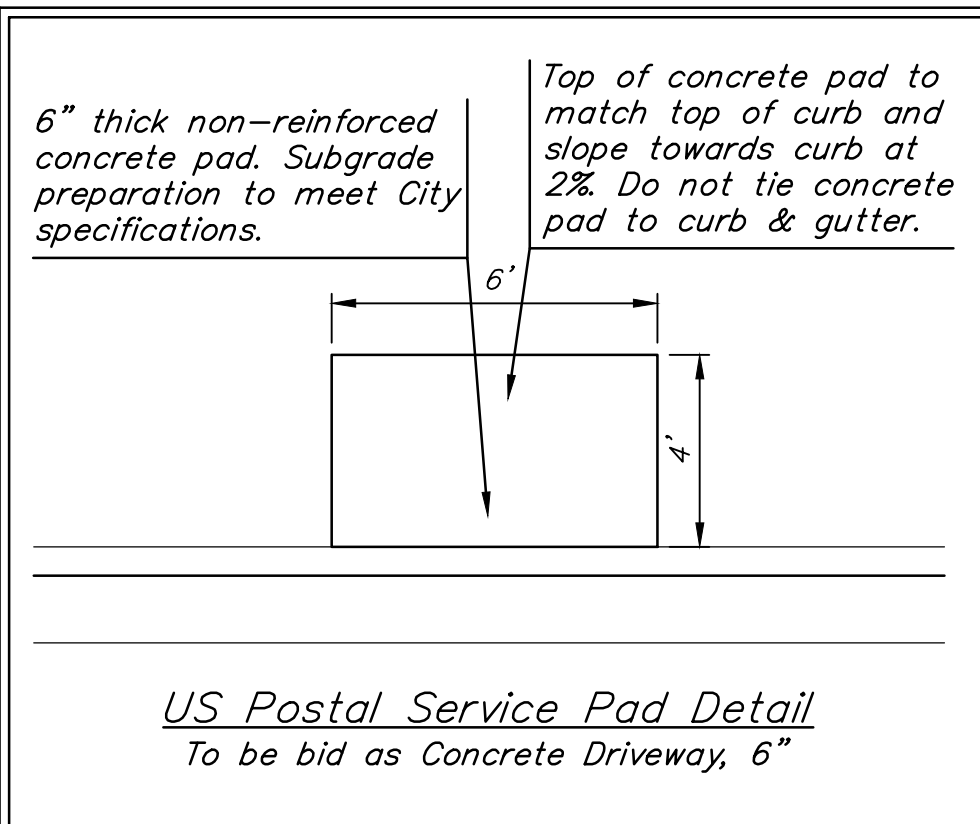
Adjust Manhole Top From Elev. = 1334.63 To Elev. = 1334.38

Construct AC Pavement 5" (3" Bit Base) W/ Crushed Rock Base 5".

Construct Concrete C & G, Comb. Type 2 (3-5/8")

All streets on this sheet are included in Phase 3.

Sta. 3+07.7, 19.5' Lt. Install 6" thick 6' x 4' concrete pad for Postal Service. To be bid as Concrete Driveway, 6".



Curve #1 Curve Data Based on Centerline						
Rad. = 400' Delta = 36°40'02" Tangent = 132.55'						
Arc = 255.98' L.C. = 251.64' Def./Ft. = 4.29728 Min.						
Face Chord Lengths	Station	Arc	8' Left	8' Right	Defl.	Total Defl.
	0+00.00	-	-	-	0°00'00"	0°00'00"
	0+25.00	25.00'	23.43'	26.56'	1°47'26"	1°47'26"
	0+50.00	25.00'	23.43'	26.56'	1°47'26"	3°34'52"
	0+75.00	25.00'	23.43'	26.56'	1°47'26"	5°22'18"
	1+00.00	25.00'	23.43'	26.56'	1°47'26"	7°09'44"
	1+25.00	25.00'	23.43'	26.56'	1°47'26"	8°57'10"
	1+50.00	25.00'	23.43'	26.56'	1°47'25"	10°44'35"
	1+75.00	25.00'	23.43'	26.56'	1°47'26"	12°32'01"
	2+00.00	25.00'	23.43'	26.56'	1°47'26"	14°19'27"
	2+25.00	25.00'	23.43'	26.56'	1°47'26"	16°06'53"
	2+50.00	25.00'	23.43'	26.56'	1°47'26"	17°54'19"
	2+55.98	5.98'	5.61'	6.35'	0°25'42"	18°20'01"

NOTE: ROLL TYPE CURB & GUTTER (TYPE 2) TO BE CONSTRUCTED ON THE PAVEMENT SHOWN ON THIS SHEET. TOP OF CURB ELEVATIONS ARE GIVEN FOR FULL HEIGHT CURB (TYPE 4).