

BENCHMARKS:
 BM #1: Crows foot cut at SE corner of curb inlet south side of Kollmeyer near NE corner of Lot 82, Block A, Edge Water Addition.
 Elev. = 1335.36 NGVD29

BM #2: Square Cut Cross in center of curb inlet top near the Northwest corner of Lot 31, Blk A., Edge Water 3rd Addition.
 Elev. = 1333.65 NGVD29

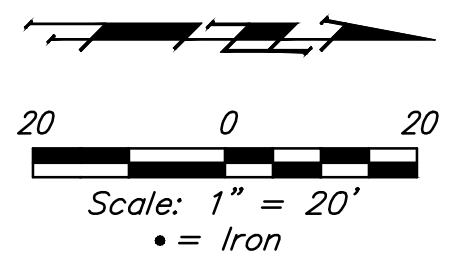
BM #3: Brass disc in top of curb adjacent to fire hydrant at the Northwest corner of Driftwood and Driftwood Ct. near the Southeast corner of Lot 62, Blk D., Edge Water Addition.
 Elev. = 1336.19 NGVD29

All streets on this sheet are included in Phase 3.

Subdivision Bench Marks		
Street & Station	Location Description	Elevation
Sunny Ct. 2+63.84, 14.25' Rt.	Adjacent to Fire Hydrant near common front lot corner of Lots 29 & 30, Block A, Edge Water 3rd Add.	

WATER VALVE LOCATION TABLE

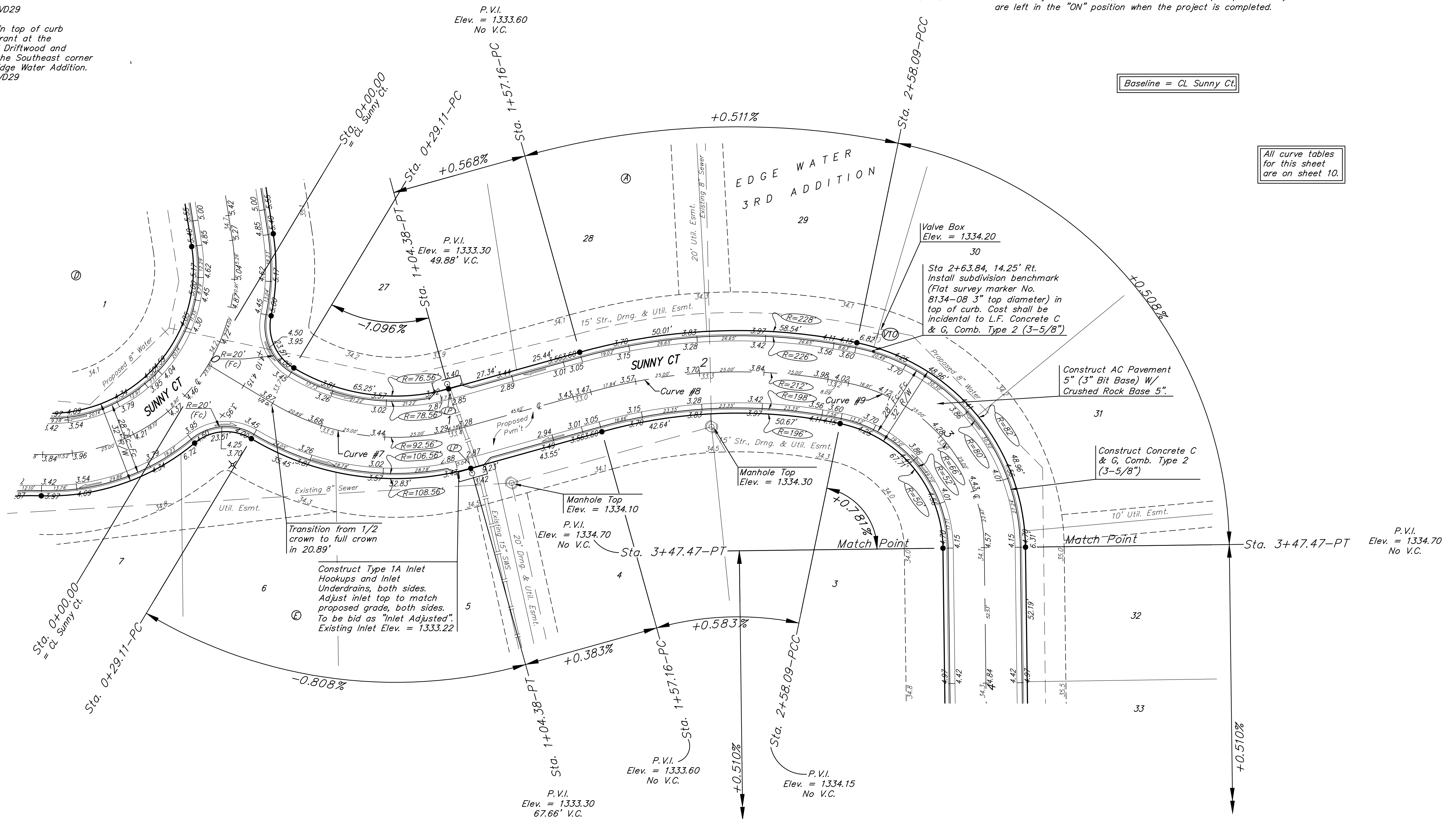
VALVE NUMBER	STREET	BASELINE STATION	OFFSET DISTANCE	OFFSET DIRECTION
V10	Sunny Ct.	2+63.84	23.31'	Lt.



Paving contractor will be responsible to operate all water valves on the project, in the presence of the inspector, to ensure accessibility to the valves, and that all valves (except blowoffs) are left in the "ON" position when the project is completed.

Baseline = CL Sunny Ct.

All curve tables for this sheet are on sheet 10.



Construct Type 1A Inlet Hookups and Inlet Underdrains, both sides. Adjust inlet top to match proposed grade, both sides. To be bid as "Inlet Adjusted". Existing Inlet Elev. = 1333.22

Valve Box Elev. = 1334.20
 Sta 2+63.84, 14.25' Rt. Install subdivision benchmark (Flat survey marker No. 8134-08 3" top diameter) in top of curb. Cost shall be incidental to L.F. Concrete C & G, Comb. Type 2 (3-5/8")

Construct AC Pavement 5" (3" Bit Base) W/ Crushed Rock Base 5"

Construct Concrete C & G, Comb. Type 2 (3-5/8")

NOTE: ROLL TYPE CURB & GUTTER (TYPE 2) TO BE CONSTRUCTED ON THE PAVEMENT SHOWN ON THIS SHEET. TOP OF CURB ELEVATIONS ARE GIVEN FOR FULL HEIGHT CURB (TYPE 4).

Baughman Company, P.A.
 ENGINEERING ARCHITECTURE
 1500 W. 10th St., Suite 200, Lincoln, NE 68502
 (402) 441-1122
 www.baughmanpa.com

SUNNY CT.
 (Lots 27-35, Block A & Lots 1-5, Block E)

SHEET 9 OF 39