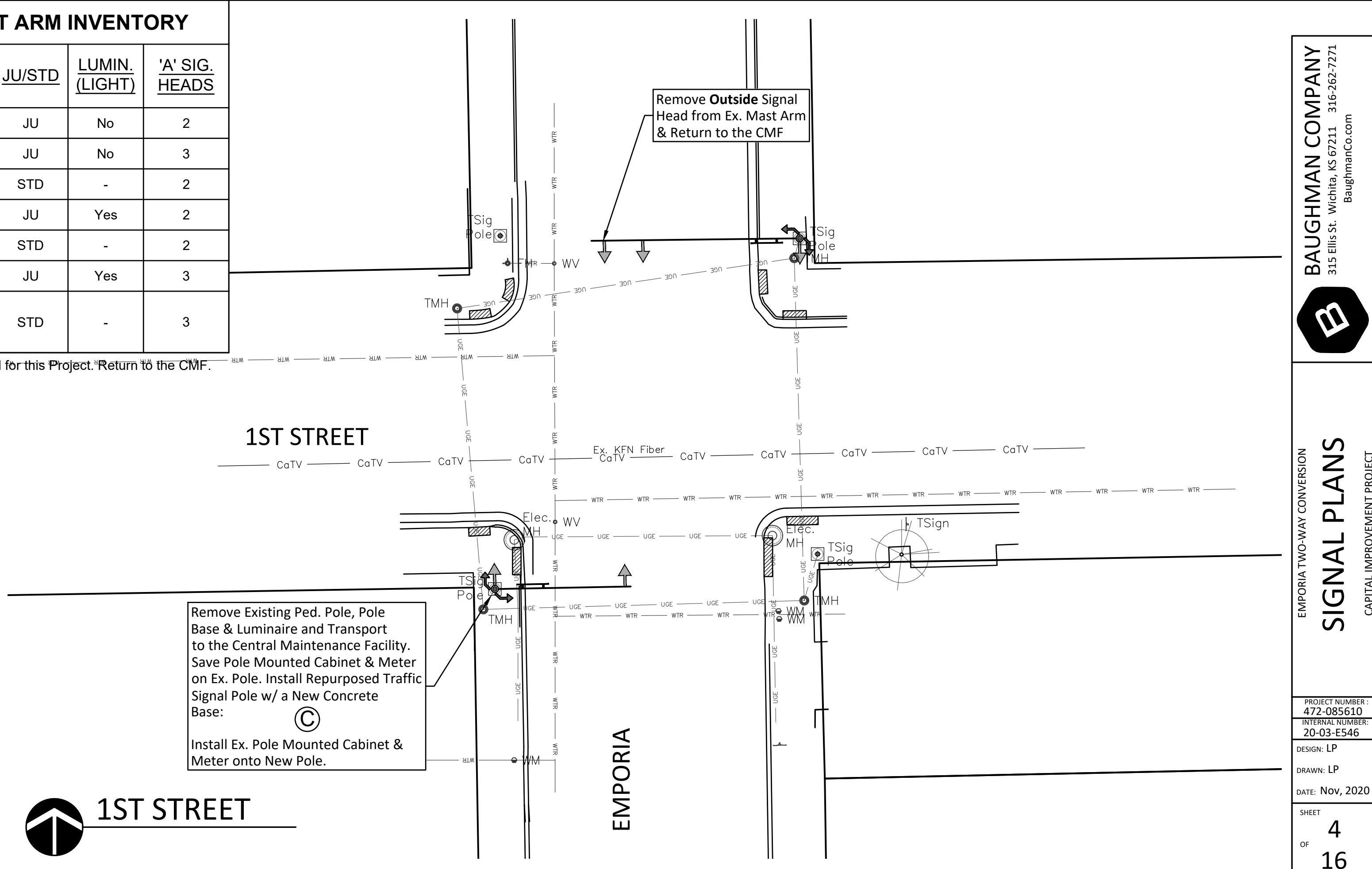


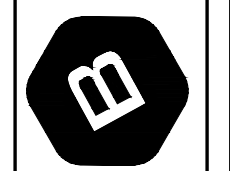
SIGNAL POLE & MAST ARM INVENTORY					
INT.	TAG	MAST ARM	JU/STD	LUMIN. (LIGHT)	'A' SIG. HEADS
TOPEKA	(A)*	22'	JU	No	2
	(B)	35'	JU	No	3
	(C)	32'	STD	-	2
EMPORIA	(D)*	24'	JU	Yes	2
	(E)	20'	STD	-	2
ARENA CROSSING	(F)	35'	JU	Yes	3
	(G)	35'	STD	-	3

\*Signal & Mast Arms which are not Reused for this Project. Return to the CMF.



NOTE: Contractor to remove and replace sidewalk panels as needed for construction of signal pole bases and to repair the temporary asphalt from Hydro Excavation. To be paid for by measured quantity bid item "Concrete Sidewalk 4".

BAUGHMAN COMPANY  
315 Ellis St. Wichita, KS 67211 316-267-7271  
BaughmanCo.com



EMPORIA TWO-WAY CONVERSION  
SIGNAL PLANS  
CAPITAL IMPROVEMENT PROJECT

PROJECT NUMBER: 472-085610  
INTERNAL NUMBER: 20-03-E546  
DESIGN: LP  
DRAWN: LP  
DATE: Nov, 2020  
SHEET  
OF 4  
16